

Month: July 2014

Table 1. Consumer Price Index (CPI) And Inflation Rate (Point To Point)

(2005-06=100)

CPI Classification	2011-12	2012-13	2013-14	2012-13		2013-14	2013-14		2014-15
				May'13	June'13	July'13	May'14	June'14	July'14
NATIONAL									
General index	170.19	181.73	195.08	182.91	184.04	186.79	196.60	196.86	199.94
<i>Inflation</i>	8.69	6.78	7.35	7.98	8.05	7.85	7.48	6.97	7.04
Food index	183.65	193.24	209.79	192.75	194.58	198.95	210.27	210.15	214.74
<i>Inflation</i>	7.72	5.22	8.56	8.13	8.26	8.14	9.09	8.00	7.94
Non-food index	152.94	166.97	176.23	170.29	170.53	171.18	179.07	179.82	180.95
<i>Inflation</i>	10.21	9.17	5.55	7.76	7.75	7.40	5.16	5.45	5.71
RURAL									
General index	173.26	183.90	196.90	184.97	186.15	188.79	198.41	198.67	201.88
<i>Inflation</i>	8.69	6.14	7.07	7.42	7.53	7.43	7.27	6.73	6.93
Food index	183.62	192.14	207.72	191.75	193.53	197.41	208.48	208.31	212.76
<i>Inflation</i>	7.50	4.64	8.11	7.40	7.58	7.52	8.72	7.64	7.78
Non-food index	156.77	170.79	179.69	174.20	174.40	175.07	182.40	183.33	184.58
<i>Inflation</i>	10.96	8.94	5.21	7.47	7.43	7.27	4.71	5.12	5.43
URBAN									
General index	164.52	177.71	191.73	179.08	180.16	183.08	193.26	193.52	196.34
<i>Inflation</i>	8.70	8.02	7.89	9.04	9.08	8.64	7.92	7.42	7.24
Food index	183.71	195.91	214.85	195.18	197.16	202.73	214.66	214.64	219.58
<i>Inflation</i>	8.27	6.64	9.67	9.89	9.94	9.65	9.98	8.87	8.31
Non-food index	147.84	161.88	171.61	165.08	165.37	166.00	174.64	175.14	176.12
<i>Inflation</i>	9.16	9.50	6.01	8.17	8.21	7.59	5.79	5.91	6.10

Fig-1: Annual Inflation Rate

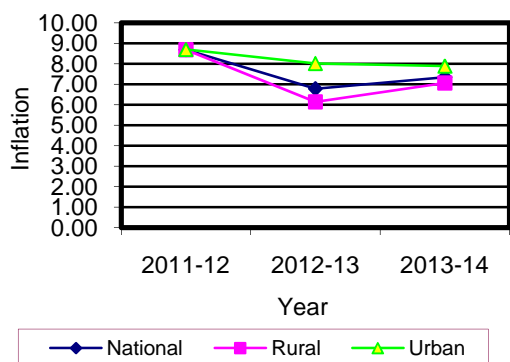


Fig-2: Monthly Inflation Rate

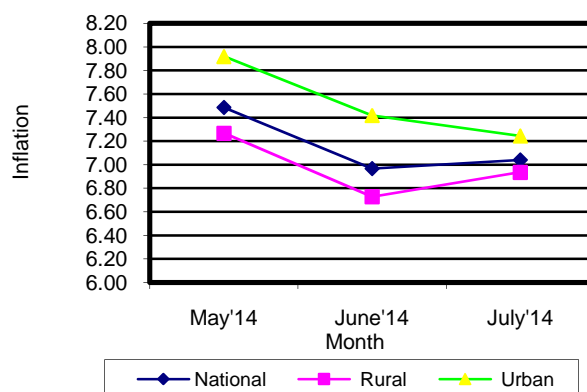


Table 2. Consumer Price Index (CPI) : National

(On Monthly Basis)
(2005-06=100)

CPI Classification	2011-12	2012-13	2013-14	2012-13			2013-14		2014-15	
				May'13	June'13	July'13	May'14	June'14	July'14	
General	170.19	181.73	195.08	182.91	184.04	186.79	196.60	196.86	199.94	
	<i>8.69</i>	<i>6.78</i>	<i>7.35</i>	<i>-1.20</i>	<i>0.62</i>	<i>1.49</i>	<i>-1.17</i>	<i>0.13</i>	<i>1.56</i>	
1. Food, beverage & tobacco	183.65	193.24	209.79	192.75	194.58	198.95	210.27	210.15	214.74	
	<i>7.73</i>	<i>5.22</i>	<i>8.56</i>	<i>-2.09</i>	<i>0.95</i>	<i>2.25</i>	<i>-1.97</i>	<i>-0.06</i>	<i>2.18</i>	
2. Non-food	152.94	166.97	176.23	170.29	170.53	171.18	179.07	179.82	180.95	
	<i>10.21</i>	<i>9.17</i>	<i>5.55</i>	<i>0.13</i>	<i>0.14</i>	<i>0.38</i>	<i>0.06</i>	<i>0.42</i>	<i>0.63</i>	
I. Clothing & footwear	160.79	179.66	194.77	184.35	184.73	187.56	197.68	199.96	204.44	
	<i>14.78</i>	<i>11.74</i>	<i>8.41</i>	<i>0.40</i>	<i>0.21</i>	<i>1.53</i>	<i>-0.83</i>	<i>1.15</i>	<i>2.24</i>	
II. Gross rent, fuel & lighting	143.36	155.61	163.47	157.95	158.13	158.29	167.12	168.08	168.68	
	<i>8.34</i>	<i>8.54</i>	<i>5.05</i>	<i>0.01</i>	<i>0.11</i>	<i>0.10</i>	<i>0.07</i>	<i>0.57</i>	<i>0.36</i>	
III. Furniture, furnishing, househ equipments & operation	175.58	195.33	206.14	199.99	200.38	200.80	208.73	208.88	208.43	
	<i>11.04</i>	<i>11.25</i>	<i>5.53</i>	<i>0.15</i>	<i>0.20</i>	<i>0.21</i>	<i>0.67</i>	<i>0.07</i>	<i>-0.22</i>	
IV. Medical care & health expen:	152.63	159.66	164.06	160.66	160.72	160.93	165.92	165.96	166.19	
	<i>5.59</i>	<i>4.61</i>	<i>2.76</i>	<i>0.03</i>	<i>0.04</i>	<i>0.13</i>	<i>0.14</i>	<i>0.02</i>	<i>0.14</i>	
V. Transport & communication	148.58	159.34	167.20	162.67	162.95	163.24	169.62	169.82	171.26	
	<i>16.59</i>	<i>7.24</i>	<i>4.93</i>	<i>0.20</i>	<i>0.17</i>	<i>0.18</i>	<i>0.25</i>	<i>0.12</i>	<i>0.85</i>	
VI. Recreation, entertainment, education & cultural services	144.48	157.23	164.38	161.28	161.47	161.61	165.69	165.79	166.04	
	<i>3.56</i>	<i>8.82</i>	<i>4.55</i>	<i>0.03</i>	<i>0.12</i>	<i>0.09</i>	<i>0.04</i>	<i>0.06</i>	<i>0.15</i>	
VII. Misc. goods & services	164.57	182.54	193.75	186.84	187.08	187.56	196.97	197.04	197.58	
	<i>10.69</i>	<i>10.92</i>	<i>6.14</i>	<i>0.04</i>	<i>0.13</i>	<i>0.26</i>	<i>0.54</i>	<i>0.04</i>	<i>0.27</i>	

Note : Figures in italics indicate inflation over previous year/month

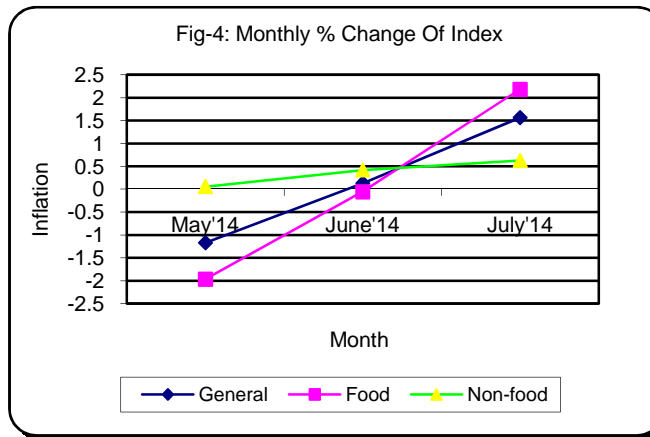
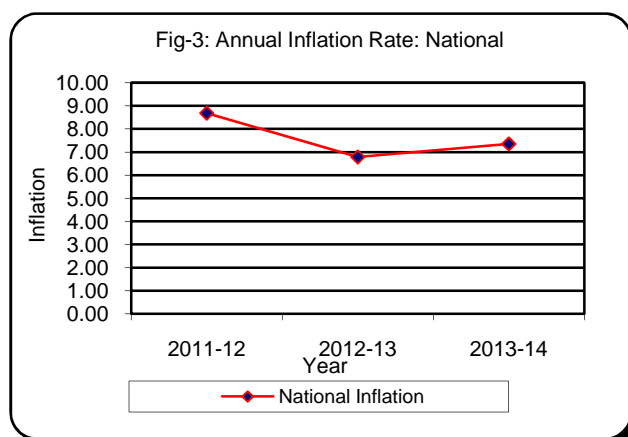


Table 3. Consumer Price Index (CPI) : Rural

(On Monthly Basis)

(2005-06=100)

CPI Classification	2011-12	2012-13	2013-14	2012-13		2013-14	2013-14		2014-15
				May'13	June'13	July'13	May'14	June'14	July'14
General	173.26	183.90	196.90	184.97	186.15	188.79	198.41	198.67	201.88
	<i>8.69</i>	<i>6.14</i>	<i>7.07</i>	<i>-1.27</i>	<i>0.64</i>	<i>1.42</i>	<i>-1.20</i>	<i>0.13</i>	<i>1.62</i>
1. Food, beverage & tobacco	183.62	192.14	207.72	191.75	193.53	197.41	208.48	208.31	212.76
	<i>7.50</i>	<i>4.64</i>	<i>8.11</i>	<i>-2.04</i>	<i>0.93</i>	<i>2.00</i>	<i>-1.86</i>	<i>-0.08</i>	<i>2.14</i>
2. Non-food	156.77	170.79	179.69	174.20	174.40	175.07	182.40	183.33	184.58
	<i>10.96</i>	<i>8.94</i>	<i>5.21</i>	<i>0.14</i>	<i>0.11</i>	<i>0.38</i>	<i>0.04</i>	<i>0.51</i>	<i>0.68</i>
I. Clothing & footwear	164.55	184.54	200.61	189.35	189.68	192.59	203.49	206.86	210.34
	<i>14.66</i>	<i>12.15</i>	<i>8.71</i>	<i>0.41</i>	<i>0.17</i>	<i>1.53</i>	<i>-1.28</i>	<i>1.66</i>	<i>1.68</i>
II. Gross rent, fuel & lighting	146.37	157.40	164.05	160.18	160.43	160.55	166.80	167.58	168.59
	<i>9.17</i>	<i>7.54</i>	<i>4.22</i>	<i>0.02</i>	<i>0.16</i>	<i>0.07</i>	<i>0.10</i>	<i>0.47</i>	<i>0.60</i>
III. Furniture, furnishing, househ equipments & operation	169.35	186.40	197.62	190.98	191.28	191.58	201.06	201.21	202.55
	<i>9.10</i>	<i>10.07</i>	<i>6.02</i>	<i>0.18</i>	<i>0.16</i>	<i>0.16</i>	<i>1.00</i>	<i>0.07</i>	<i>0.67</i>
IV. Medical care & health expen:	156.87	164.63	168.87	165.53	165.55	165.64	171.04	171.07	171.29
	<i>6.48</i>	<i>4.95</i>	<i>2.58</i>	<i>0.02</i>	<i>0.01</i>	<i>0.05</i>	<i>0.17</i>	<i>0.02</i>	<i>0.13</i>
V. Transport & communication	150.60	160.98	166.01	163.65	163.73	163.83	167.92	168.16	168.79
	<i>20.12</i>	<i>6.89</i>	<i>3.12</i>	<i>0.15</i>	<i>0.05</i>	<i>0.06</i>	<i>0.35</i>	<i>0.14</i>	<i>0.37</i>
VI. Recreation, entertainment, education & cultural services	158.26	174.07	179.72	177.50	177.56	177.72	181.23	181.40	181.61
	<i>4.73</i>	<i>9.99</i>	<i>3.25</i>	<i>0.03</i>	<i>0.03</i>	<i>0.09</i>	<i>0.06</i>	<i>0.09</i>	<i>0.12</i>
VII. Misc. goods & services	168.84	187.05	199.74	191.79	191.97	192.46	203.96	204.02	204.37
	<i>12.43</i>	<i>10.79</i>	<i>6.78</i>	<i>0.04</i>	<i>0.09</i>	<i>0.26</i>	<i>0.88</i>	<i>0.03</i>	<i>0.17</i>

Note : Figures in italics indicate inflation over previous year/month

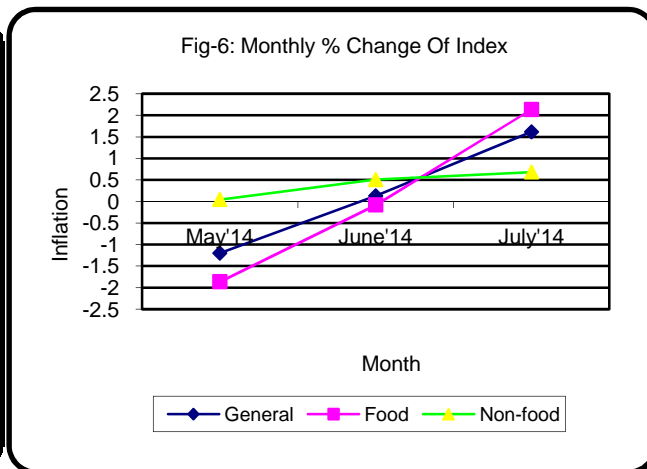
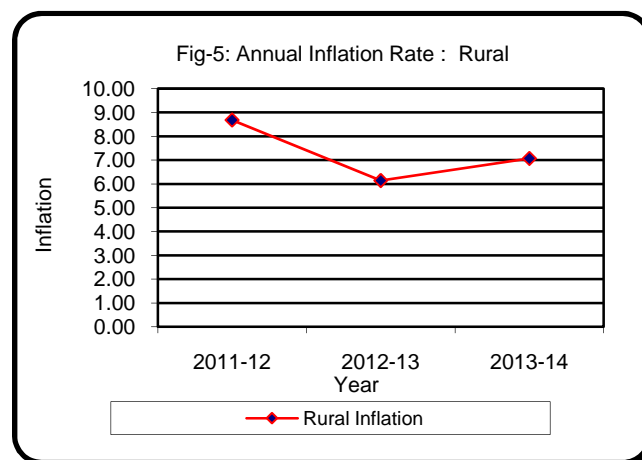


Table 4. Consumer Price Index (CPI) : Urban

(On Monthly Basis)

(2005-06=100)

CPI Classification	2011-12	2012-13	2013-14	2012-13		2013-14	2013-14		2014-15
				May'13	June'13	July'13	May'14	June'14	July'14
General	164.52	177.71	191.73	179.08	180.16	183.08	193.26	193.52	196.34
	8.69	8.02	7.89	-1.08	0.60	1.62	-1.12	0.13	1.46
1. Food , beverage & tobacco	183.71	195.91	214.85	195.18	197.16	202.73	214.67	214.64	219.58
	8.27	6.64	9.67	-2.21	1.01	2.83	-2.21	-0.01	2.30
2. Non-food	147.84	161.88	171.61	165.08	165.37	166.00	174.64	175.14	176.12
	9.16	9.50	6.01	0.12	0.18	0.38	0.08	0.29	0.56
I. Clothing & footwear	153.65	170.39	183.66	174.84	175.31	177.99	186.66	186.87	193.24
	15.02	10.89	7.79	0.36	0.27	1.53	0.12	0.11	3.41
II. Gross rent, fuel & lighting	139.88	153.55	162.80	155.37	155.48	155.67	167.49	168.65	168.78
	7.35	9.77	6.02	0.01	0.07	0.12	0.04	0.69	0.08
III. Furniture, furnishing, household equipments & operation	186.54	211.03	221.11	215.83	216.37	217.02	222.21	222.36	218.75
	14.26	13.13	4.78	0.11	0.25	0.30	0.13	0.07	-1.62
IV. Medical care & health expenditure	145.37	151.15	155.82	152.33	152.45	152.87	157.15	157.22	157.45
	3.98	3.98	3.09	0.07	0.08	0.28	0.07	0.04	0.15
V. Transport & communication	146.34	157.53	168.52	161.58	162.09	162.59	171.49	171.64	173.98
	12.81	7.65	6.98	0.25	0.32	0.31	0.14	0.09	1.36
VI. Recreation, entertainment, education & cultural services	129.61	139.06	147.83	143.79	144.11	144.23	148.93	148.96	149.23
	2.05	7.29	6.31	0.03	0.22	0.08	0.03	0.02	0.18
VII. Misc. goods & services	159.31	176.96	186.37	180.74	181.04	181.52	188.34	188.42	189.20
	8.50	11.08	5.32	0.06	0.17	0.27	0.10	0.04	0.41

Note : Figures in italics indicate inflation over previous year/month

