

Table 1. Consumer Price Index (CPI) And Inflation Rate (Point To Point)

(2005-06=100)

CPI Classification	2011-12	2012-13	2013-14	2013-14			2014-15		
				Jan'14	Feb'14	Mar'14	Jan'15	Feb'15	Mar'15
NATIONAL									
General index	170.19	181.73	195.08	198.15	198.54	198.84	210.12	210.74	211.31
<i>Inflation</i>	8.69	6.78	7.35	7.50	7.44	7.48	6.04	6.14	6.27
Food index	183.65	193.24	209.79	213.65	214.17	214.45	226.61	227.25	228.12
<i>Inflation</i>	7.72	5.22	8.56	8.81	8.84	8.96	6.07	6.11	6.37
Non-food index	152.94	166.97	176.23	178.26	178.51	178.82	188.98	189.58	189.77
<i>Inflation</i>	10.21	9.17	5.55	5.53	5.37	5.26	6.01	6.20	6.12
RURAL									
General index	173.26	183.90	196.90	199.93	200.40	200.72	211.55	212.21	212.79
<i>Inflation</i>	8.69	6.14	7.07	7.24	7.17	7.21	5.81	5.89	6.01
Food index	183.62	192.14	207.72	211.48	212.12	212.39	223.73	224.25	225.03
<i>Inflation</i>	7.50	4.64	8.11	8.39	8.42	8.53	5.79	5.72	5.95
Non-food index	156.77	170.79	179.69	181.57	181.74	182.15	192.18	193.04	193.32
<i>Inflation</i>	10.96	8.94	5.21	5.17	4.92	4.83	5.84	6.22	6.13
URBAN									
General index	164.52	177.71	191.73	194.84	195.12	195.36	207.47	208.03	208.58
<i>Inflation</i>	8.70	8.02	7.89	7.97	7.97	7.98	6.48	6.62	6.77
Food index	183.71	195.91	214.85	218.97	219.17	219.48	233.62	234.56	235.64
<i>Inflation</i>	8.27	6.64	9.67	9.80	9.84	9.98	6.69	7.02	7.36
Non-food index	147.84	161.88	171.61	173.85	174.20	174.39	184.72	184.96	185.04
<i>Inflation</i>	9.16	9.50	6.01	6.04	5.99	5.88	6.25	6.18	6.11

Fig-1: Annual Inflation Rate

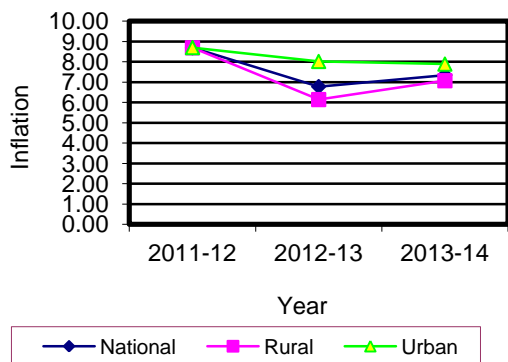


Fig-2: Monthly Inflation Rate

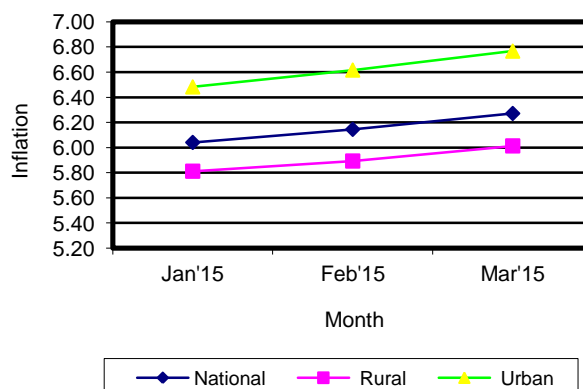


Table 2. Consumer Price Index (CPI) : National

(On Monthly Basis)

(2005-06=100)

CPI Classification	2011-12	2012-13	2013-14	2013-14			2014-15		
				Jan'14	Feb'14	Mar'14	Jan'15	Feb'15	Mar'15
General	170.19	181.73	195.08	198.15	198.54	198.84	210.12	210.74	211.31
	<i>8.69</i>	<i>6.78</i>	<i>7.35</i>	<i>1.19</i>	<i>0.20</i>	<i>0.15</i>	<i>1.13</i>	<i>0.30</i>	<i>0.27</i>
1. Food , beverage & tobacco	183.65	193.24	209.79	213.65	214.17	214.45	226.61	227.25	228.12
	<i>7.73</i>	<i>5.22</i>	<i>8.56</i>	<i>0.84</i>	<i>0.24</i>	<i>0.13</i>	<i>1.03</i>	<i>0.28</i>	<i>0.38</i>
2. Non-food	152.94	166.97	176.23	178.26	178.51	178.82	188.98	189.58	189.77
	<i>10.21</i>	<i>9.17</i>	<i>5.55</i>	<i>1.71</i>	<i>0.14</i>	<i>0.17</i>	<i>1.26</i>	<i>0.32</i>	<i>0.10</i>
I. Clothing & footwear	160.79	179.66	194.77	198.38	198.79	198.87	211.06	212.15	212.25
	<i>14.78</i>	<i>11.74</i>	<i>8.41</i>	<i>2.49</i>	<i>0.21</i>	<i>0.04</i>	<i>1.01</i>	<i>0.52</i>	<i>0.05</i>
II. Gross rent, fuel & lighting	143.36	155.61	163.47	166.53	166.62	166.88	172.95	173.12	173.18
	<i>8.34</i>	<i>8.54</i>	<i>5.05</i>	<i>3.37</i>	<i>0.05</i>	<i>0.16</i>	<i>0.86</i>	<i>0.10</i>	<i>0.03</i>
III. Furniture, furnishing, household equipments & operation	175.58	195.33	206.14	207.40	208.03	208.36	215.49	216.77	217.79
	<i>11.04</i>	<i>11.25</i>	<i>5.53</i>	<i>0.52</i>	<i>0.30</i>	<i>0.16</i>	<i>0.68</i>	<i>0.59</i>	<i>0.47</i>
IV. Medical care & health expenditure	152.63	159.66	164.06	165.24	165.41	165.50	189.51	191.52	191.62
	<i>5.59</i>	<i>4.61</i>	<i>2.76</i>	<i>0.79</i>	<i>0.10</i>	<i>0.05</i>	<i>6.98</i>	<i>1.06</i>	<i>0.05</i>
V. Transport & communication	148.58	159.34	167.20	167.78	168.11	168.52	185.11	185.54	185.75
	<i>16.59</i>	<i>7.24</i>	<i>4.93</i>	<i>0.38</i>	<i>0.20</i>	<i>0.24</i>	<i>0.66</i>	<i>0.23</i>	<i>0.11</i>
VI. Recreation, entertainment, education & cultural services	144.48	157.23	164.38	164.55	164.72	165.55	168.64	168.71	168.77
	<i>3.56</i>	<i>8.82</i>	<i>4.55</i>	<i>0.10</i>	<i>0.10</i>	<i>0.50</i>	<i>0.20</i>	<i>0.04</i>	<i>0.04</i>
VII. Misc. goods & services	164.57	182.54	193.75	195.01	195.17	195.53	207.33	207.35	207.47
	<i>10.69</i>	<i>10.92</i>	<i>6.14</i>	<i>0.51</i>	<i>0.08</i>	<i>0.18</i>	<i>1.17</i>	<i>0.01</i>	<i>0.06</i>

Note : Figures in italics indicate inflation over previous year/month

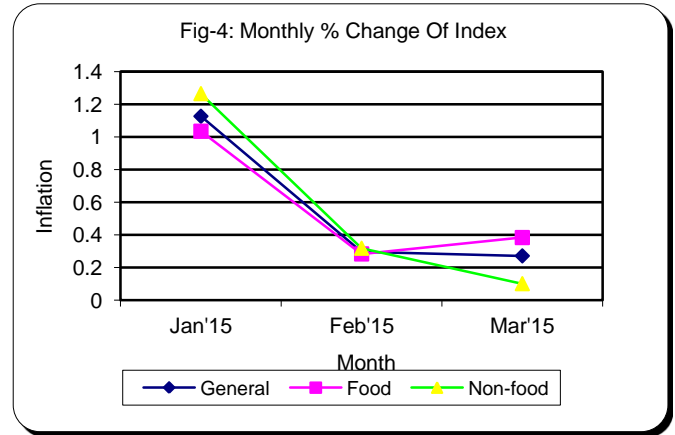
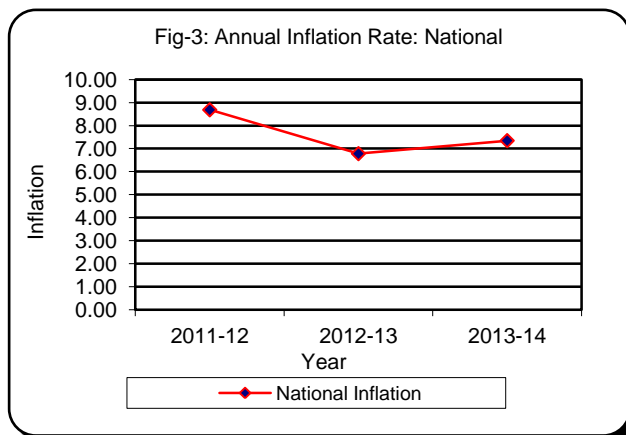


Table 3. Consumer Price Index (CPI) : Rural

(On Monthly Basis)

(2005-06=100)

CPI Classification	2011-12	2012-13	2013-14	2013-14			2014-15		
				Jan'14	Feb'14	Mar'14	Jan'15	Feb'15	Mar'15
General	173.26	183.90	196.90	199.93	200.40	200.72	211.55	212.21	212.79
	<i>8.69</i>	<i>6.14</i>	<i>7.07</i>	<i>1.20</i>	<i>0.24</i>	<i>0.16</i>	<i>1.13</i>	<i>0.31</i>	<i>0.27</i>
1. Food , beverage & tobacco	183.62	192.14	207.72	211.48	212.12	212.39	223.73	224.25	225.03
	<i>7.50</i>	<i>4.64</i>	<i>8.11</i>	<i>1.01</i>	<i>0.30</i>	<i>0.13</i>	<i>1.02</i>	<i>0.23</i>	<i>0.35</i>
2. Non-food	156.77	170.79	179.69	181.57	181.74	182.15	192.18	193.04	193.32
	<i>10.96</i>	<i>8.94</i>	<i>5.21</i>	<i>1.59</i>	<i>0.09</i>	<i>0.23</i>	<i>1.33</i>	<i>0.45</i>	<i>0.15</i>
I. Clothing & footwear	164.55	184.54	200.61	205.55	205.62	205.70	216.76	218.14	218.21
	<i>14.66</i>	<i>12.15</i>	<i>8.71</i>	<i>3.55</i>	<i>0.03</i>	<i>0.04</i>	<i>0.68</i>	<i>0.64</i>	<i>0.03</i>
II. Gross rent, fuel & lighting	146.37	157.40	164.05	165.87	166.00	166.46	172.35	172.57	172.66
	<i>9.17</i>	<i>7.54</i>	<i>4.22</i>	<i>2.03</i>	<i>0.08</i>	<i>0.28</i>	<i>0.50</i>	<i>0.13</i>	<i>0.05</i>
III. Furniture, furnishing, household equipments & operation	169.35	186.40	197.62	198.94	199.37	199.83	210.11	211.91	213.48
	<i>9.10</i>	<i>10.07</i>	<i>6.02</i>	<i>0.65</i>	<i>0.22</i>	<i>0.23</i>	<i>0.89</i>	<i>0.86</i>	<i>0.74</i>
IV. Medical care & health expenditure	156.87	164.63	168.87	170.42	170.55	170.59	197.21	200.32	200.40
	<i>6.48</i>	<i>4.95</i>	<i>2.58</i>	<i>1.15</i>	<i>0.08</i>	<i>0.02</i>	<i>8.66</i>	<i>1.58</i>	<i>0.04</i>
V. Transport & communication	150.60	160.98	166.01	166.19	166.47	166.73	175.03	175.52	175.75
	<i>20.12</i>	<i>6.89</i>	<i>3.12</i>	<i>0.39</i>	<i>0.17</i>	<i>0.16</i>	<i>0.25</i>	<i>0.28</i>	<i>0.13</i>
VI. Recreation, entertainment, education & cultural services	158.26	174.07	179.72	179.50	179.64	181.03	184.53	184.58	184.64
	<i>4.73</i>	<i>9.99</i>	<i>3.25</i>	<i>0.15</i>	<i>0.08</i>	<i>0.77</i>	<i>0.08</i>	<i>0.03</i>	<i>0.03</i>
VII. Misc. goods & services	168.84	187.05	199.74	201.17	201.32	201.67	216.91	216.87	216.99
	<i>12.43</i>	<i>10.79</i>	<i>6.78</i>	<i>0.63</i>	<i>0.07</i>	<i>0.17</i>	<i>1.74</i>	<i>-0.02</i>	<i>0.06</i>

Note : Figures in italics indicate inflation over previous year/month

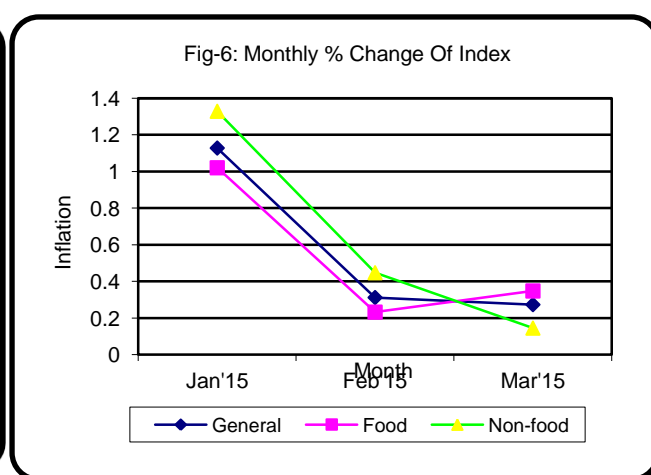
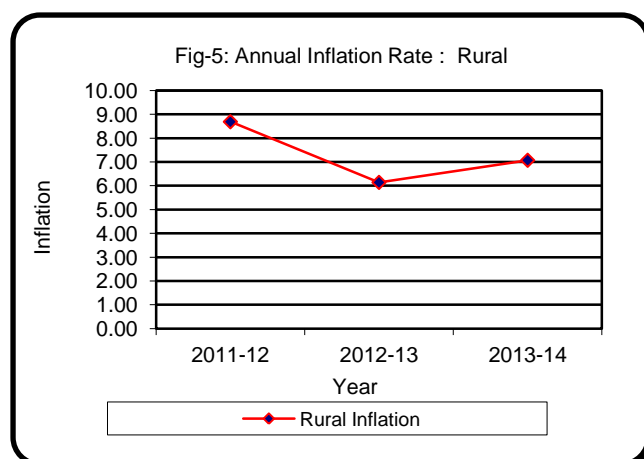


Table 4. Consumer Price Index (CPI) : Urban

(On Monthly Basis)

(2005-06=100)

CPI Classification	2011-12	2012-13	2013-14	2013-14			2014-15		
				Jan'14	Feb'14	Mar'14	Jan'15	Feb'15	Mar'15
General	164.52	177.71	191.73	194.84	195.12	195.36	207.47	208.03	208.58
	<i>8.69</i>	<i>8.02</i>	<i>7.89</i>	<i>1.14</i>	<i>0.14</i>	<i>0.12</i>	<i>1.12</i>	<i>0.27</i>	<i>0.26</i>
1. Food , beverage & tobacco	183.71	195.91	214.85	218.97	219.17	219.48	233.62	234.56	235.64
	<i>8.27</i>	<i>6.64</i>	<i>9.67</i>	<i>0.47</i>	<i>0.09</i>	<i>0.14</i>	<i>1.06</i>	<i>0.40</i>	<i>0.46</i>
2. Non-food	147.84	161.88	171.61	173.85	174.20	174.39	184.72	184.96	185.04
	<i>9.16</i>	<i>9.50</i>	<i>6.01</i>	<i>1.88</i>	<i>0.20</i>	<i>0.11</i>	<i>1.18</i>	<i>0.13</i>	<i>0.04</i>
I. Clothing & footwear	153.65	170.39	183.66	184.77	185.81	185.91	200.23	200.79	200.92
	<i>15.02</i>	<i>10.89</i>	<i>7.79</i>	<i>0.33</i>	<i>0.56</i>	<i>0.05</i>	<i>1.70</i>	<i>0.28</i>	<i>0.06</i>
II. Gross rent, fuel & lighting	139.88	153.55	162.80	167.29	167.33	167.38	173.64	173.76	173.79
	<i>7.35</i>	<i>9.77</i>	<i>6.02</i>	<i>4.96</i>	<i>0.02</i>	<i>0.03</i>	<i>1.26</i>	<i>0.07</i>	<i>0.02</i>
III. Furniture, furnishing, household equipments & operation	186.54	211.03	221.11	222.29	223.26	223.37	224.93	225.33	225.38
	<i>14.26</i>	<i>13.13</i>	<i>4.78</i>	<i>0.33</i>	<i>0.44</i>	<i>0.05</i>	<i>0.32</i>	<i>0.18</i>	<i>0.02</i>
IV. Medical care & health expenditure	145.37	151.15	155.82	156.37	156.61	156.77	176.35	176.46	176.58
	<i>3.98</i>	<i>3.98</i>	<i>3.09</i>	<i>0.13</i>	<i>0.15</i>	<i>0.10</i>	<i>3.91</i>	<i>0.06</i>	<i>0.07</i>
V. Transport & communication	146.34	157.53	168.52	169.53	169.93	170.49	196.21	196.58	196.77
	<i>12.81</i>	<i>7.65</i>	<i>6.98</i>	<i>0.36</i>	<i>0.24</i>	<i>0.33</i>	<i>1.06</i>	<i>0.19</i>	<i>0.10</i>
VI. Recreation, entertainment, education & cultural services	129.61	139.06	147.83	148.43	148.61	148.84	151.48	151.58	151.64
	<i>2.05</i>	<i>7.29</i>	<i>6.31</i>	<i>0.05</i>	<i>0.12</i>	<i>0.15</i>	<i>0.34</i>	<i>0.07</i>	<i>0.04</i>
VII. Misc. goods & services	159.31	176.96	186.37	187.40	187.57	187.95	195.49	195.60	195.70
	<i>8.50</i>	<i>11.08</i>	<i>5.32</i>	<i>0.35</i>	<i>0.09</i>	<i>0.20</i>	<i>0.38</i>	<i>0.06</i>	<i>0.05</i>

Note : Figures in italics indicate inflation over previous year/month

