

MONTHLY RELEASE
Foreign Trade Statistics
Bangladesh Bureau of Statistics

April 2015

Compilation and dissemination of Foreign Trade Statistics (FTS) is one of the core activities of Bangladesh Bureau of Statistics (BBS). Considering the importance of FTS, BBS has been compiling and publishing it on an annual basis since 1973-74. Since February 2007, BBS has been publishing **Monthly Release** on FTS to satisfy the users' need. It is an outcome of the BBS efforts towards the improvement of FTS.

This monthly release is based on the data available from National Board of Revenue (NBR) and Bangladesh Bank (BB). NBR provides export and import data on goods while BB provides such data on services. We are thankful to NBR and BB which have continued to help us in providing data in bringing out this publication.

Data presented in this publication are provisional and subject to revision. All these provisional data will be subsequently reviewed and revised. The revised data will be presented in the upcoming issues.

I firmly believe this publication will play a significant role as an effective market research tool to planners, policy makers, researchers, the business community and others. Comments and suggestions from users regarding any inclusion, omission or presentation of data for improvement of the publication are most welcome.

I would like to express my heartfelt thanks to Mr. Abul Kalam Azad, Director Mr. Md. Shahabuddin Sarker, Deputy Director, Shahanaz Begum, Assistant Statistical Officer, BBS and all other officers and staffs of Foreign Trade Section for their relentless effort to make the publication possible.

Mohammad Abdul Wazed
(Additional Secretary)
Director General

Total Trade (Goods & Services)

In April,2015, total export and import of goods and services were recorded at Tk.206.48 billion and Tk.386.77 billion respectively resulting in a trade deficit of goods and services decreased by Tk.180.29 billion. The growth of export and import in April,2015 is decreased by 6.12 and increased by 8.45 percent respectively comparing to March,2015 and it has increased by 372.60 and increased by 239.33 percent respectively comparing to April,2014.

Goods

In April,2015, the trade deficit for goods appeared to Tk. 153.19 billion as against Tk.105.62 billion in March, 2014. The export of goods in April,2015 have decreased by 7.53 over against that in March, 2015 and the import of goods in April,2015 have increased by 10.61% as compared to that in March, 2015.The exports of goods in April,2015 is Tk.185.31 billion as against Tk. 23.28 billion in April,,2014.The import of goods in April,,2015, is Tk.338.50 billion as against Tk. 67.92 billion in April,,2014.

Services

In April,2015, the trade deficit for services stands to Tk. 27.10 billion as against Tk. 31.08 billion in March, 2015. The export of services in April,,2015 has increased by 8.40 percent while the import of services during the period has decreased by 4.62 percent as compared with that in March, 2015. The export of services in April,2015 is Tk. 21.17 billion which was Tk. 20.41 billion in April,2014. On the other hand the import of services in April,2015 is Tk.48.27 billion as against Tk. 46.06 billion in April,2014.

Three months Moving Average of export and import

For the three months ending in April,2015the moving average of exports of goods and services was Tk. 212.91 billion, while the moving average of imports of goods and services was Tk.351.45 billion resulting in an average trade deficit of Tk. 138.54 billion. For the three months ending in March, 2015 the average trade deficit was Tk.118.36 billion, reflecting average export of Tk. 222.98 billion and average imports of Tk. 341.34 billion.

Table 1: Export, import and trade deficits

(In billion taka)

	Export			Import			Trade balance		
	Total	Goods	Services	Total	Goods	Services	Total	Goods	Services
2012-13	2474.06	2268	205.66	3158.51	3144.27	514.24	-1063.73	-876.27	-308.68
2013-14	1997.18	1749.09	248.09	2998.30	2379.40	574.53	-1001.12	-674.66	-326.44
2014-15									
May-14	231.90	209.85	22.05	324.61	263.14	61.47	-92.71	-53.29	-39.42
June-14	232.59	216.60	15.99	339.29	288.34	50.93	-106.70	-71.74	-34.94
July-14	253.35	233.87	19.48	295.12	242.30	52.82	-41.77	-8.49	-33.34
Aug-14	187.10	166.00	21.10	344.14	292.00	52.14	-157.04	-126.00	-31.04
Sep;14	218.78	198.19	20.59	405.82	348.96	56.06	-187.04	-150.77	36.27
Oct-14	164.37	149.77	14.60	334.51	290.00	44.51	-170.14	-140.23	-29.91
Nov-14	206.00	185.98	20.02	233.69	282.23	51.46	-27.69	-96.25	-31.44
Dec-14	241.49	219.43	22.06	383.20	325.87	57.33	-141.71	-106.44	-35.27
Jan-15	236.70	219.73	16.97	356.44	293.96	62.48	-119.74	-74.23	-45.51
Feb-15	212.31	194.57	17.75	310.95	286.08	24.87	-98.63	-91.51	-7.12
Mar-15	219.94	2003.41	19.53	356.64	306.03	50.61	-136.70	-105.62	-31.08
Apr-15	206.48	185.31	21.17	386.77	338.50	48.27	-180.29	-153.19	-27.1

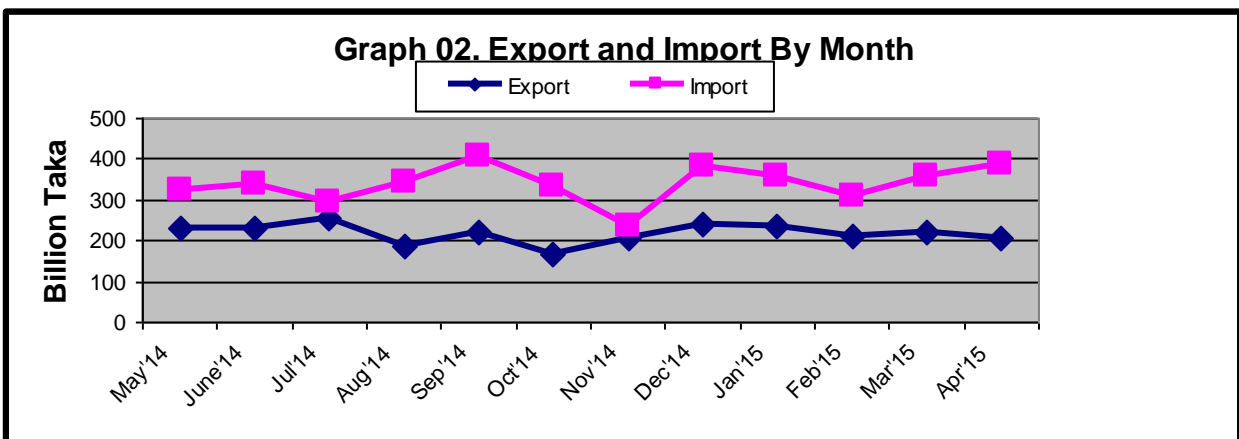


Table 2: Export, import and trade deficits

(In million US \$)

Period	Export			Import			Trade balance		
	Total	Goods	Service	Total	Goods	Service	Total	Goods	Service
2012-13	28853	28651	202	40257	39752	505	-11404	-11101	-303
2013-14	22623	22376	247	31577	31005	572	-8954	-8629	-325
2014-15									
Apr-14	318	298	20	915	869	46	-597	-571	-26
May-14	2706	2684	22	3426	3365	61	-720	-681	-39
Jun-14	2806	2790	16	3765	3714	51	-959	-924	-35
Jul-14	3029	3010	19	3172	3119	53	-143	-109	-34
Aug-14	2163	2142	21	3812	3760	52	-1649	-1618	-31
Sep-14	2572	2551	21	4549	4492	57	-1977	-1941	-36
Oct-14	1943	1928	15	3778	3733	45	-1835	-1805	-30
Nov-14	2398	2378	20	3660	3609	51	-1262	-1231	-31
Dec-14	2847	2825	22	4252	4195	57	-1405	-1370	-35
Jan-15	2827	2810	17	3821	3759	62	-994	-949	-45
Feb-15	2506	2488	18	3683	3658	25	-1177	-1170	-7
Mar-15	2586	2566	20	3969	3918	51	-1332	-1352	-31
Apr-15	2394	2373	21	4382	4334	48	-1988	-1961	-27

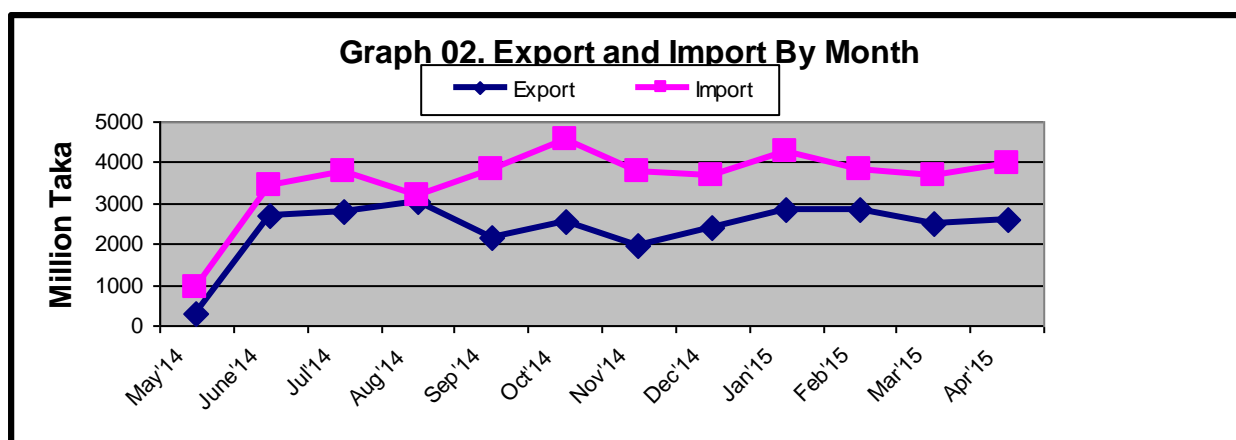


Table 3. Percent change from the previous month (goods)

(In million taka)

Items	2014-15		
	Mar'15	Apr'15	Percent change from the previous month
1. Export (Commodities)	200410	185313	-7.53
1. Ready made Garments	161380	150948	-6.46
2. Shrimps and prawn	2247	1970	-12.33
3. Vegetable textiles fiber/ yarn	5742	4960	-13.62
4. Made-up textiles articles	6572	6511	-0.93
5. Raw hides, skins & leathers	2749	2558	-6.95
6. Raw jute	708	485	-31.50
7. Footwear Special woven fabrics	3575	3396	-5.01
8. Fertilizer	-	-	-
9. Hats and other head gear	386	349	-9.59
10. Special woven fabrics	330	321	-2.73
11. Others	16721	13815	-17.38
2. Import (Commodities)	306025	338499	10.61
1. Machinery & parts	31018	29399	-5.22
2. Petroleum product and oil	34734	45469	30.91
3. Electric Machinery	12829	18018	40.45
4. Soya bean and Palm oil	21261	15571	-26.76
5. Raw cotton	14899	17214	15.54
6. Textile fabrics	658	1018	54.71
7. Iron and steel	12398	18956	52.90
8. Plastics and articles	12993	11778	-9.35
9. Wheat	7856	12385	57.65
10. Fertilizer	6061	5948	-1.86
11. Others	151318	162743	7.55
3. Trade balance (1-2)	-105615	-153186	45.04

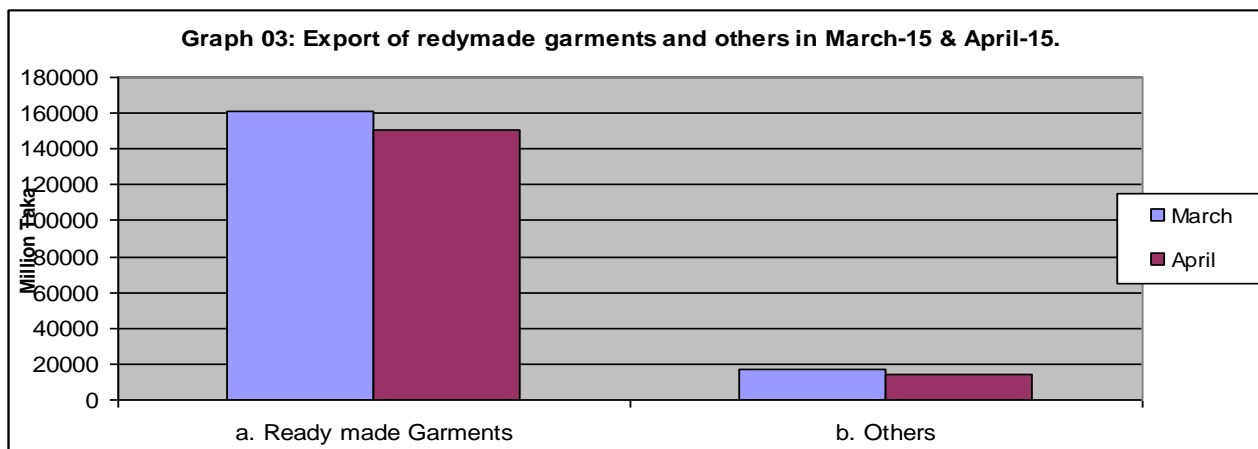


Table 4. Import of Essential Commodities Quantity in M. Ton

(In million taka)

Items	2014-15			
	Mar'15	Apr'15	Percent change from the previous month	Cumulative (April'15)
Import (Commodities)				
1. Raw sugar	313796	228416	-27.21	2016865
2. Palm oil	329424	192842	-41.46	2619805
3. Soya bean oil	63377	91993	45.15	973537
4 Milk & Cream	11648	10885	-6.55	89881
5. Ginger	1945	4014	106.38	14754
6. Chillies	-	-	-	-
7. Wheat	349761	574232	64.18	3152355
8. Rice	182928	138119	-24.50	1494686
9. Lentil & other	28362	10054	-64.55	193799
10.Onion	37653	27101	-28.02	435949
11.Garlic	5214	3921	-24.80	72423
12.Tea	1655	1503	-9.18	7083
13.Oil seed	64324	112325	74.62	715887

Table 5: Twelve months export of readymade garments during 2012-13 to 2014-15

(In million taka)

Month	Ready made Garments (Knitted)			Ready made Garments (Not Knitted)		
	2012-13	2013-14	2014-15	2012-13	2013-14	2014-15
July	81856	97489	101485	81278	98123	93914
August	64571	97489	69664	62748	98123	63171
September	109983	82254	82360	94910	76541	72051
October	70847	66362	60953	61730	63406	56604
November	53225	67407	70801	58705	68236	77444
December	73265	79771	82837	84186	93450	98742
January	75300	69682	86721	91743	80387	99008
February	64184	9504	74703	77630	23258	89141
March	67207	2748	72390	78189	16967	88990
April	61944	54	73066	65012	2758	77882
May	78773	86610		77746	84796	
June	84982	87795		87379	91874	

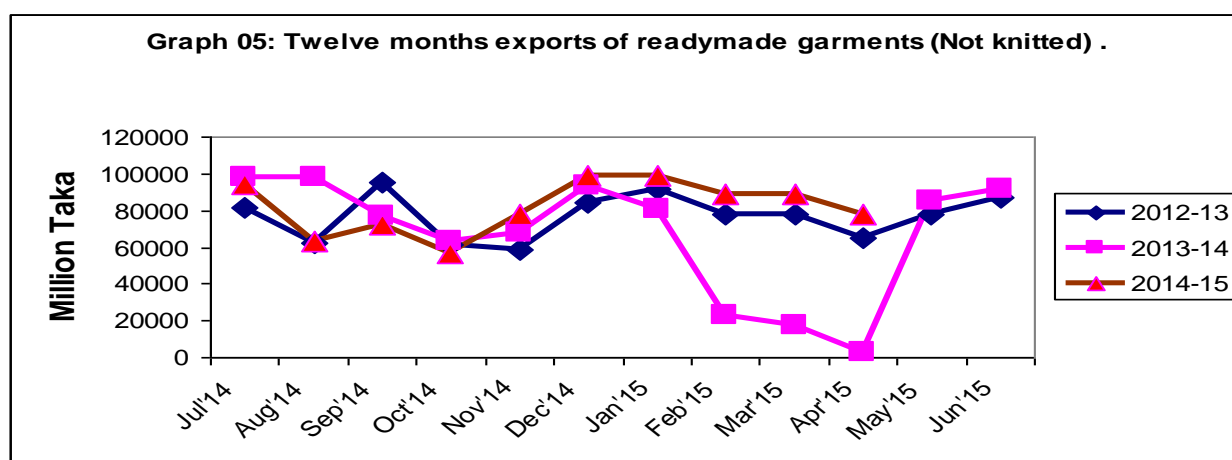
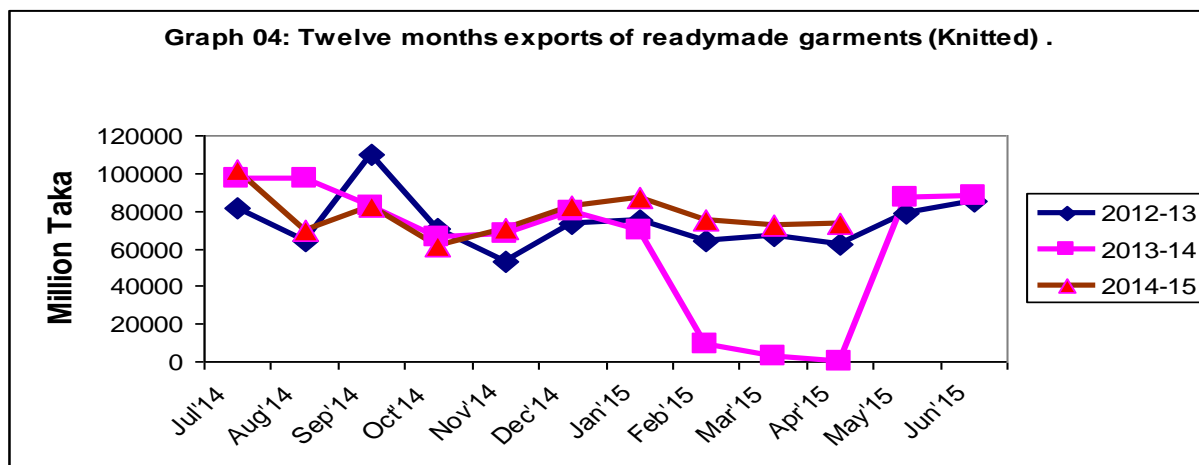


Table 6: Twelve months export of raw hides, skins & leather, 2012-13 to 2014-15

(In million taka)

	Raw hides, skins & leather		
	2012-2013	2013-14	2014-15
July	2347	3065	2899
August	1870	3065	2230
September	3568	3699	3342
October	2560	567	2637
November	1854	691	2335
December	2970	767	2930
January	2569	47	2530
February	2515	12	1942
March	3304	37	2749
April	3494	498	2558
May	3631	3454	
June	2869	2864	

Graph 06: Twelve months exports of Raw hides , skin & leather .

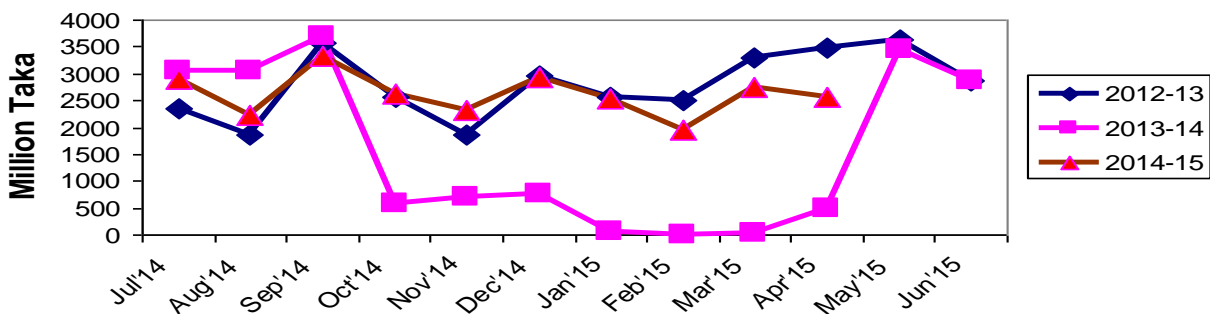


Table 7: Twelve months export of shrimps and prawn, 2012-13 to 2014-15.

(In million taka)

Month	Shrimps and prawn		
	2012-13	2013-14	2014-15
July	3466	4397	4774
August	2772	4397	4199
September	4415	5048	4997
October	3756	3121	3674
November	3609	2518	3738
December	3314	2148	3723
January	2502	1596	2644
February	2353	1144	2106
March	1634	1209	2247
April	2384	-	1970
May	3811	2926	
June	3802	4324	

Graph 07: Twelve months exports of Shrimp & prawn .

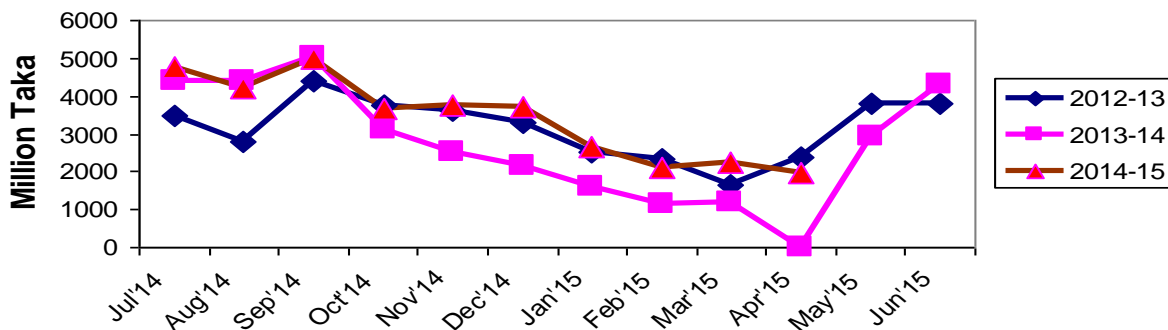
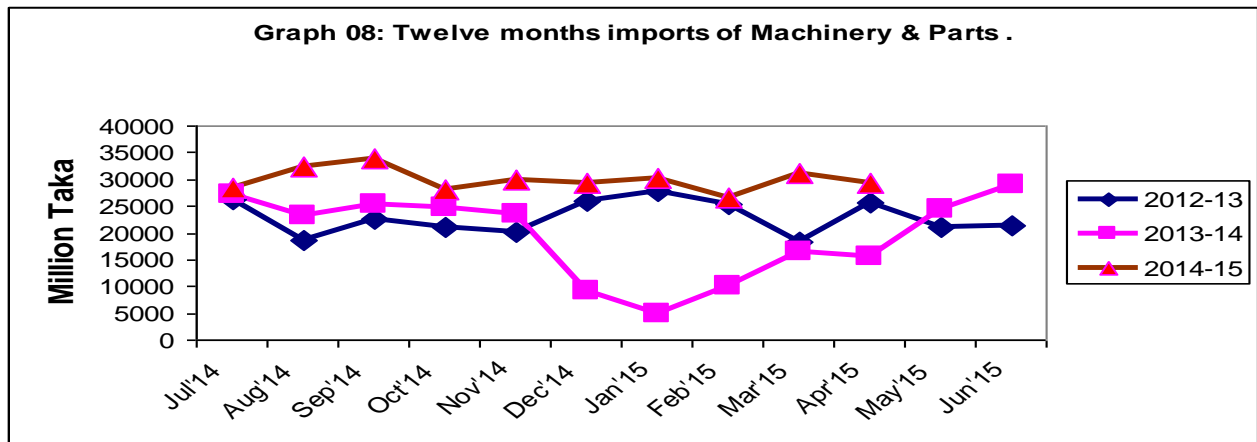


Table 8: Twelve months import of machinery & parts and electrical machinery during 2012-13 to 2014-15.

(In million taka)

Month	Machinery & Parts			Electrical Machinery		
	2012-13	2013-14	2014-15	2012-13	2013-14	2014-15
July	26239	27309	28289	13145	15767	16083
August	18678	23121	32463	12567	10324	19161
September	22617	25435	33942	13682	17442	20119
October	21001	24749	28228	15485	15713	15598
November	20238	23438	29911	14283	16380	15966
December	25979	9039	29267	12551	12552	17134
January	27802	5035	30114	16400	7308	13332
February	25296	10190	26528	12931	5330	12858
March	18472	16604	31018	10321	5233	12829
April	25543	15501	29399	12333	6059	18018
May	21107	24465		13777	8147	
June	21471	28898		11112	11591	



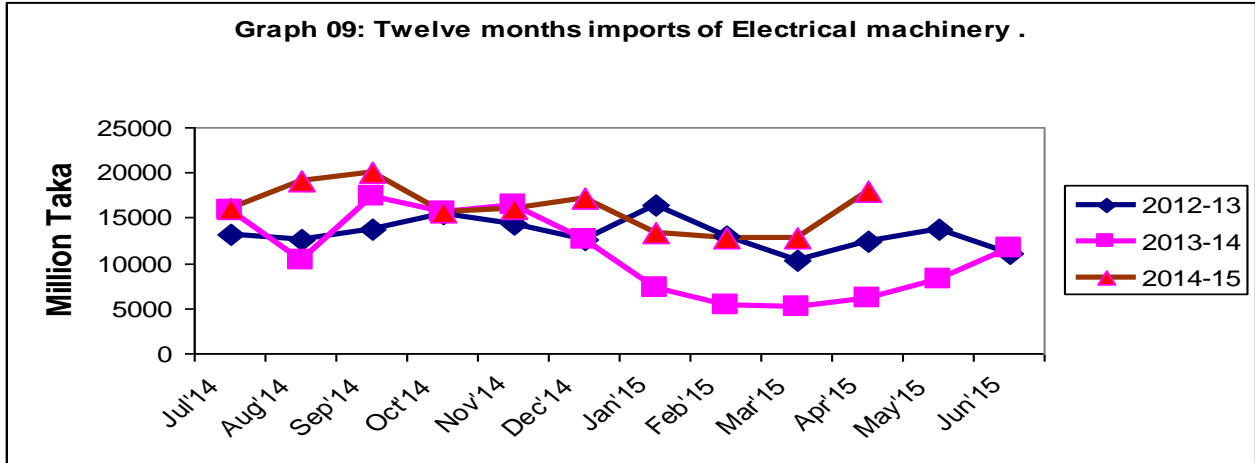
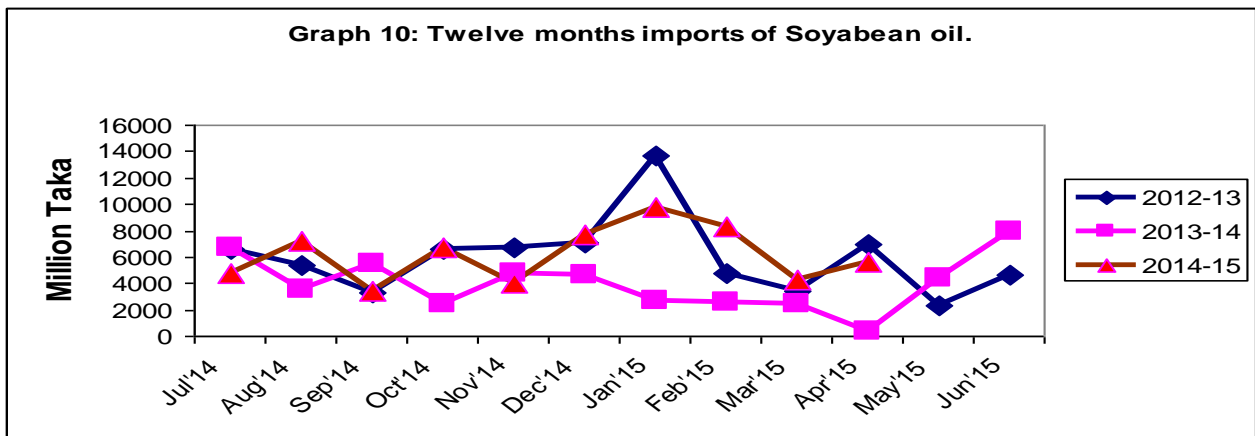


Table 9: Twelve months imports of Soya bean and Palm oil during 2012-13 to 2014-15

(In million taka)

Month	Soya bean			Palm Oil		
	2012-13	2013-14	2014-15	2012-13	2013-14	2014-15
July	6626	6695	4812	26621	18660	20866
August	5367	3484	7149	16609	11355	5369
September	3346	5481	3419	8373	8870	14583
October	6581	2428	6757	9621	21280	9185
November	6669	4793	3994	11868	9756	10064
December	7045	4626	7638	7951	8666	12918
January	13699	2667	9814	20540	4092	18128
February	4774	2590	8311	16991	8520	11874
March	3399	2444	4271	10186	6741	16990
April	6996	414	5674	9690	77	9897
May	2287	4446		9935	13766	
June	4590	7908		26090	31529	



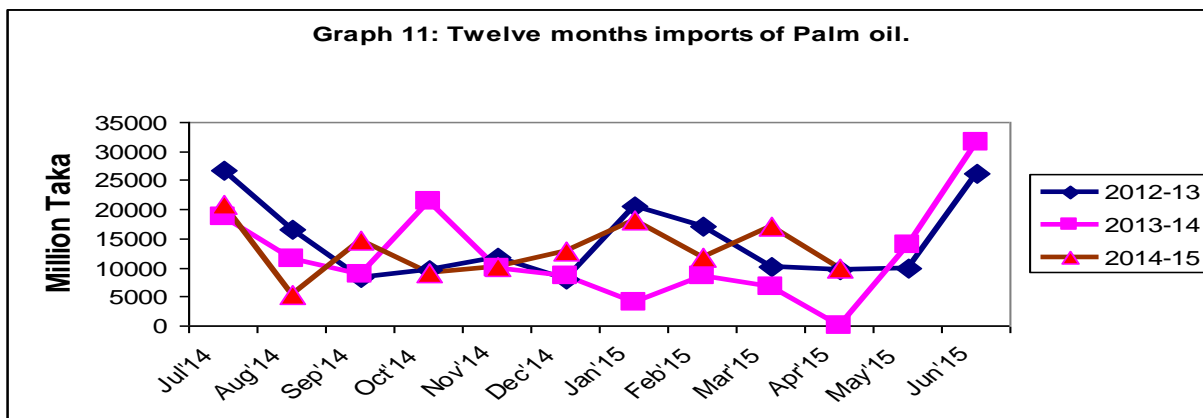


Table 10: Twelve months import of rice and wheat during 2012-13 to 2014-15

(In million taka)

Month	Rice			Wheat		
	2012-13	2013-14	2014-15	2012-13	2013-14	2014-15
July	155	569	1489	2287	3838	1611
August	62	661	2492	332	5903	6300
Sep	82	1101	2939	2351	14754	7266
Oct	407	455	3743	4444	27770	10175
Nov	223	516	4722	6933	2943	5291
Dec	26	386	4932	2640	313	4202
Jan	56	617	3887	3157	976	2917
Feb	59	336	5073	3459	1495	5039
Mar	24	184	5081	5039	1139	7865
April	63	142	3949	7652	965	12385
May	38	414		5117	6484	
June	125	1954		2700	5912	

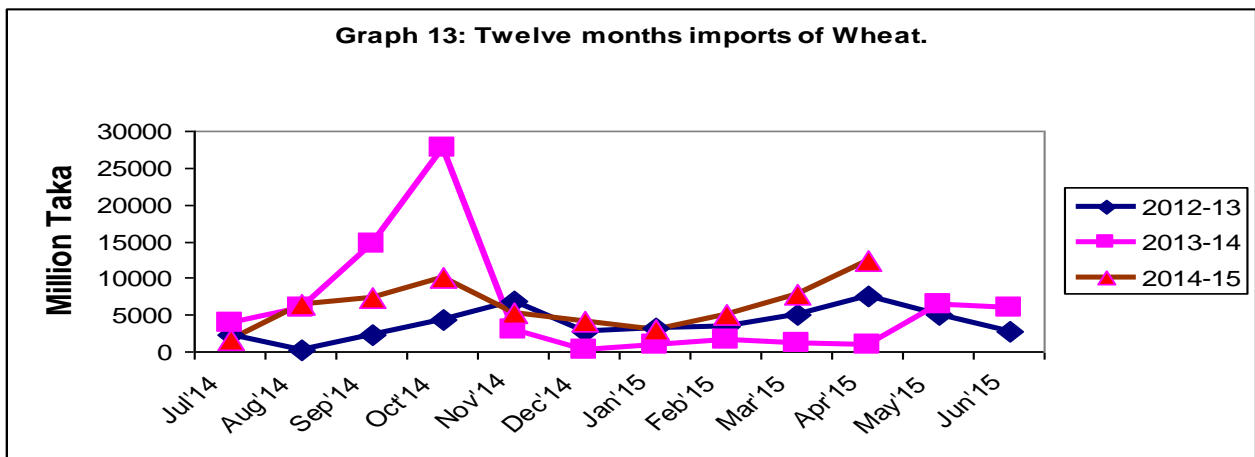
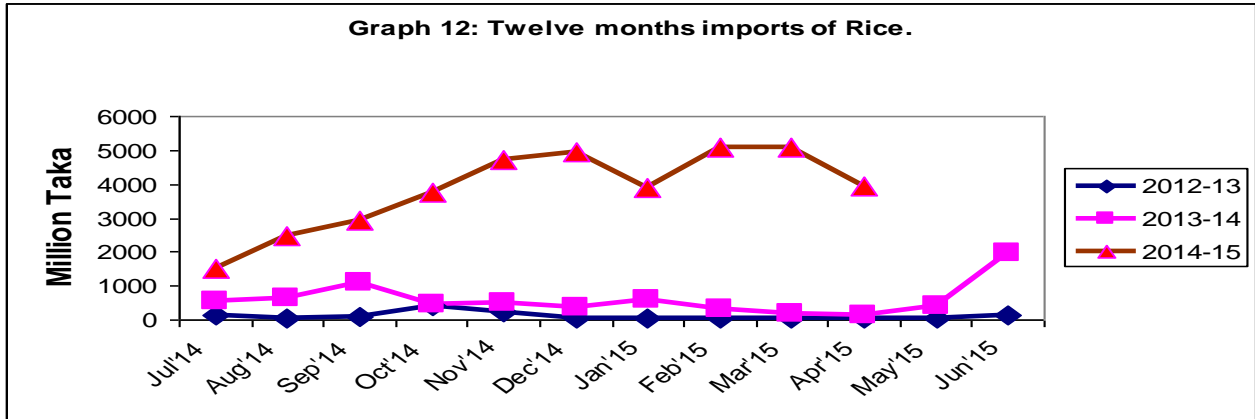


Table 11: Twelve months import of iron & steel and plastics & articles during 2012-13 to 2014-15

(In million taka)

Month	Iron & Steel			Plastics & articles		
	2012-13	2013-14	2014-15	2012-13	2013-14	2014-15
July	9059	12931	6683	2287	12670	11174
August	9455	9499	16007	7781	9296	13502
September	18745	9713	13734	9940	10343	13403
October	12691	9793	9949	9127	10268	10867
November	15499	6710	13530	8720	10039	11119
December	7038	3225	14663	8438	5171	11716
January	14420	1008	18885	10440	1608	12045
February	11548	1211	12286	7846	1246	9608
March	13913	1232	12398	10417	2837	12993
April	12425	879	18956	12307	1373	11778
May	14867	19504		10168	9672	
June	16949	9882		9729	11572	

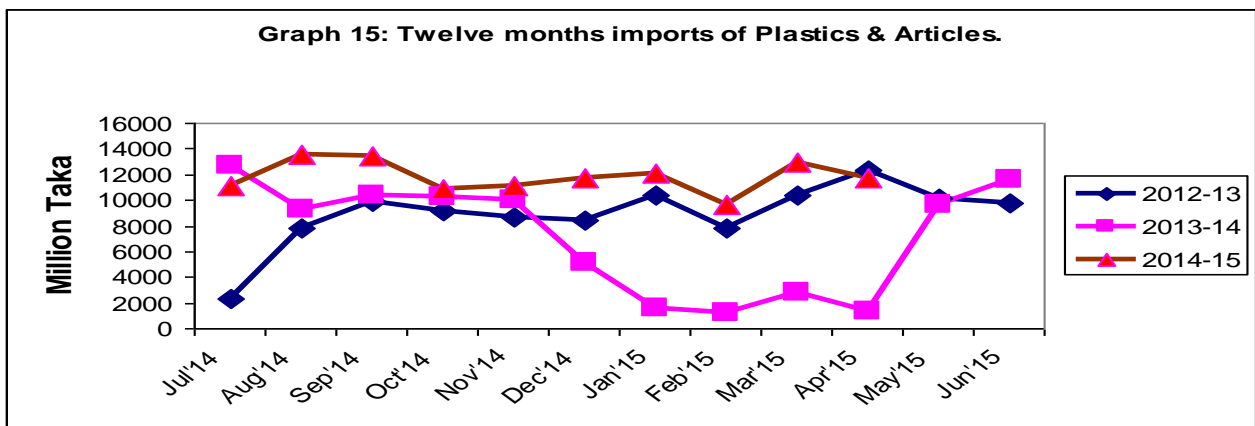
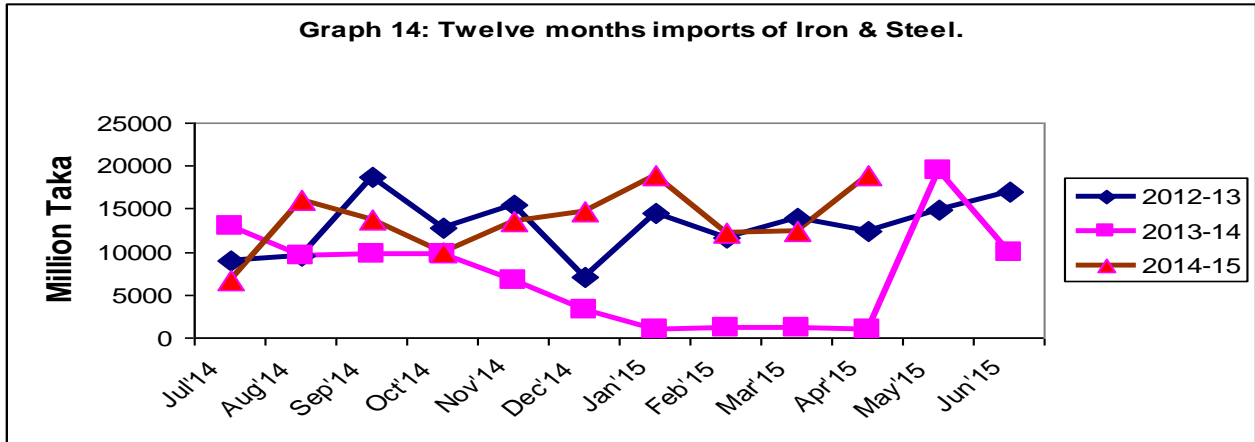


Table 12. Point to point percent change in external trade (goods)

(In million taka)

Items	March-April			April		
	2013-14	2014-15	Change in Percent	2013-14	2014-15	Change in Percent
1. Export(Commodities)	380392	255361	-32.87	23279	185313	696.05
2. Import (Commodities)	532318	556090	4.47	67920	338499	398.38
3.Trade balance(1-2)	-151926	-300729	-37.34	-44641	-153186	297.67

Table13. Top trading partners – total trade (goods) April -2015

(In million taka)

Country	Exports	Imports	Total	Rank	Percent of Total Trade
China	5368	62543	67911	1	12.96
India	2572	44055	46627	2	8.90
USA	36866	6802	43668	3	8.34
Singapore	900	34226	35126	4	6.71
Germany	25343	7392	32735	5	6.25
UK	21210	2128	23338	6	4.46
Hongkong	1425	17886	19311	7	3.69
Japan	5065	13273	18338	8	3.50
Indonesia	239	15782	16021	9	3.06
France	12559	2232	14791	10	2.82

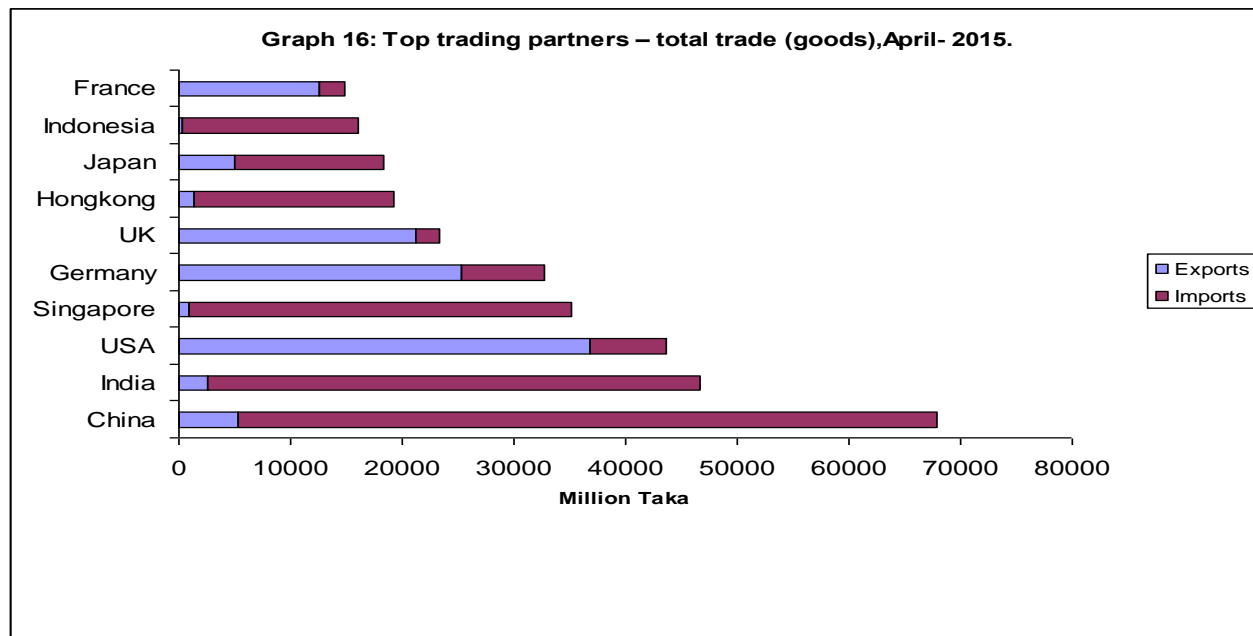


Table 14. Top trading partners – exports (goods), April -2015

(In million taka)

Country	Export	Rank	Percent of Total Export
USA	39382	1	21.25
Germany	28534	2	15.40
UK	24589	3	13.27
Spain	10867	4	5.86
France	9243	5	4.99
Italy	6875	6	3.71
Japan	6462	7	3.49
Canada	6368	8	3.44
Turkey	5268	9	2.84
China	5155	10	2.78

Table 15. Top trading partners – imports (goods), April -2015

(In million taka)

Country	Import	Rank	Percent of Total Import
China	56494	1	16.69
India	43107	2	12.73
Singapore	29915	3	8.84
Indonesia	18561	4	5.48
Hong kong	13402	5	3.96
Malaysia	11545	6	3.41
Brazil	11542	7	3.41
Korea Rep	9436	8	2.79
Japan	9318	9	2.75
Thailand	6930	10	2.05

Table 16. Monthly merchandise export (2 digit HS code)

HS Code	Commodities	2014-15		(In million taka)
		Mar'15	Apr'15	% change from previous month
1	Live animals	0.01	-	-
2	Meat and edible meat offal	-	4.72	-
3	Fishes, crustacean and other aquatic	2585.97	2284.76	-11.65
4	Dairy produces edible product of animal origin.	4.96	11.90	139.92
5	Products of animal origin	126.12	71.19	-43.55
6	Live tree and other plants etc.	32.22	130.58	305.28
7	Edible vegetables, roots as tubers	862.23	529.06	-38.64
8	Edible fruits and nuts citrus fruits	390.13	393.03	0.74
9	Coffee, tea, mate and spices	183.83	156.80	-14.70
10	Cereals	38.25	79.69	108.34
11	Product of milling industry : malt etc.	22.37	4.11	-81.63
12	Oil seeds and oleaginous fruits	78.04	46.94	-39.85
13	Lac, gum resin vegetable sap/ extract	3.42	0.27	-92.11
14	Vegetable plaiting materials	134.61	227.08	68.69
15	Animal or vegetable fats and oils	116.4	81.49	-29.99
16	Preparations of meat or fish etc.	24.69	11.83	-52.09
17	Sugar and sugar confectionery	82.33	65.22	-20.78
18	Cocoa and cocoa preparations	1.34	2.67	99.25
19	Preparations of cereals, flour, starch etc.	730.68	662.35	-9.35
20	Preparations of vegetable fruits, nuts, etc.	558.44	494.03	-11.53
21	Misc. edible preparations	0.88	2.09	137.50
22	Beverages, spirits and vinegar	262.5	244.42	-6.89
23	Residues & waste from the food industry	3.66	1.30	-64.48
24	Tobacco mfg tobacco substitutes	164.22	200.16	21.89
25	Salt, sulph etc. & plastering metals stone cement	13.18	14.52	10.17
26	Ores, slag and ash	55.85	12.01	-78.50
27	Mineral, fuels/oils etc.	1219.82	524.93	-56.97
28	Inorganic chem.comp of specious metals etc.	364.33	68.93	-81.08
29	Organic chemicals	3.18	2.38	-25.16
30	Pharmaceutical products	547.3	381.46	-30.30
31	Fertilizers	-	-	
32	Tanning/dyeing ext; dye pigments etc.	1.99	2.16	8.54
33	Essential oils, perfumery/toilet pre.	1.95	4.69	140.51

Table 16. Monthly merchandise export (2 digit HS code)

HS Code	Commodities	2014-15		(in million taka)
		Mar'15	Apr'15	% change from previous month
34	Soap, organic Surface-active agents etc.	15.96	15.39	-3.57
35	Albuminoidal substitute starches, glues etc.	6.24	4.77	-23.56
36	Explosive pyrotechnic products	-	-	
37	Photographic/cinematographic goods	-	-	
38	Miscellaneous chem. products	27.85	23.64	-15.12
39	Plastics and articles thereof	604.96	561.85	-7.13
40	Rubber and articles thereof	126.06	110.42	-12.41
41	Raw hides & skins, leather	2748.93	2557.85	-6.95
42	Articles of Leather/Animal Gut	1751.58	1804.12	3.00
43	Fur skins & artificial fur. Mfg.	-	-	
44	Wood & art. of wood; wood charcoal	31.41	26.24	-16.46
45	Cork and articles of cork	-	-	
46	Manufactures of straw etc.	68.22	52.16	-23.54
47	Pulp/ wood/fibrous cellulose materials etc.	-	-	
48	Paper & paper board; art. P. pulp etc.	250.41	248.80	-0.64
49	Printed books, news papers, pictures etc.	2.02	5.74	184.16
50	Silk	0.81	-	
51	Wool, fine/coarse animal hair etc.	3.12	11.16	257.69
52	Cotton	766.3	714.69	-6.73
53	Other vegetable, Textile fibres, paper/yarn etc	5742.37	4959.51	-13.63
54	Man-made filaments	317.42	222.4	-29.94
55	Man-made staple fibres	163.28	207.49	27.08
56	Wadding felts nonwovens, special yarn etc.	193.27	188.01	-2.72
57	Carpet other text. floor coverings	142.45	131.17	-7.92
58	Special woven fabrics, tufted tex.fabrics etc.	330.11	320.61	-2.88
59	Impregnated, coated, textile fabrics etc.	87.92	96.5	9.76
60	Knitted or crocheted fabrics	313.32	316.13	0.90
61	Article of appl. clothing accesso. knit / crocht.	72389.67	73066.46	0.93
62	Article of appl. clothing accesso. knit/	88990.08	77881.81	-12.48
63	Other made up textile articles etc.	6572.04	6510.68	-0.93
64	Footwear, gaiter & like etc.	3575.35	3396.00	-5.02
65	Headgear and parts thereof	439.68	383.13	-12.86

Table 16. Monthly merchandise export (2 digit HS code)

(In million taka)

HS Code	Commodities	2014-15		% change from previous month
		Mar'15	Apr'15	
66	Umbrellas, sun umbrellas, walk sticks etc.	-	-	
67	Prepared feathers & down/articles etc.	98.38	65.71	-33.21
68	Art of stone, plastic, cement etc.	0.59	1.9	222.03
69	Ceramic products	307.88	299.57	-2.70
70	Glass and glassware	16.46	13.94	-15.31
71	Natural/culture pearls precious stones etc.	36.39	11.95	-67.16
72	Iron or steel	223.73	134.51	-39.88
73	Articles of iron or steel	389.68	660.13	69.40
74	Copper and articles thereof	266.85	263.93	-1.09
75	Nickel and articles thereof	-	-	
76	Aluminum and article thereof	12.06	4.24	-64.84
78	Lead and articles thereof	121.47	49.1	-59.58
79	Zinc and articles thereof	20.11	19.05	-5.27
80	Tin and articles thereof	-	-	
81	Other base metals, cermets etc.	-	1.88	
82	Tools, cutlery Spon base Metl Part	32.95	27.67	-16.02
83	Miscellaneous art of base metal.	7.13	-	
84	Nuclear reactors, boilers etc.	1133.54	692.41	-38.92
85	Electrical mach. & equipment, parts etc.	622.02	302.3	-51.40
86	Rail/tramway locomotives etc.	4.93	3.41	-30.83
87	Vehicles, other than rail/tram way's & parts etc.	1418.14	1114.09	-21.44
88	Aircraft, space craft and parts.	0.08	108.98	136125.00
89	Ships, boats & floating structures	268.48	1.85	-99.31
90	Optical,photo,cinematgph.Medical inst.etc.	365.66	311.01	-14.95
91	Clocks & watches & parts	6.23	7.79	25.04
92	Musical /instruments and parts etc.	-	-	
93	Arms, & ammunition and parts & accessories	123.6	-	
94	Furniture, bedding, mattresses etc.	379.2	372.44	-1.78
95	Toys, games & sports requisites & parts	139.67	195.04	39.64
96	Miscellaneous mfg. articles	136.08	113.25	-16.78
97	Works/ art, collectors & antiques	1.78	-	
98	Goods Commodities NEC	1.64	3.17	93.29
	Grand Total	200246.2	338498.75	-7.46

Table 17. Monthly export of major commodities (4 digits)

(In million taka)

H S Code	Commodities	2014-15		% change from previous month
		Mar'15	Apr'15	
303	Fish frozen	233.52	262.94	12.60
304	Fish fillet, other fish meal	10.56	4.32	-59.09
305	Fish dried	35.47	12.91	-63.60
306	Shrimps & prawns frozen	2247.03	1970.38	-12.31
307	Molluscs	3.71	4.10	10.51
506	Bone and horn- cores	10.81	7.82	-27.66
709	Vegetable fresh, chilled other	34.13	17.52	-48.67
902	Tea	2.14	2.26	5.61
1006	Rice	38.25	79.69	108.34
2401	Un-manufactured tobacco	121.27	169.50	39.77
2710	Petro oil/oil bitum minrl, nec	1218.82	524.44	-56.97
3003-004	Pharmaceutical product	522.33	374.05	-28.39
3901-926	Plastic & articles thereof	604.92	561.83	-7.12
4102	Raw hides & skin of sheep's or lambs	-	-	-
4103	Raw hides and skin other	.24	-	-
4104	Leather Bovine/Equin W/Out hair	1733.62	1451.72	-16.26
4105	Tanned or crust skins of sheep or lambs	.36	9.25	2469.44
4106	Tanned or crust hides and skins or other animals	280.92	180.76	-35.65
4107	Leather hole hides and skins or crusting	464.21	523.96	12.87
4107	Leather further prepared after tanning or crusting including parchment-dressed			
4113	leather of other animals	265.50	389.95	46.87
4202	Trunks, suit-case, vanity-cases, brief cases, and other	1175.33	1074.60	-8.57
4602	Basket work, wicker work, and other articles	61.25	51.44	-16.02
5303	Jute and other textile bast fibres, raw or retted	707.54	485.04	-31.45
5307	Jute yarn	4584.91	4089.73	-10.80
5310	Woven fabrics and jutes or of other textile bast fibres	445.72	380.76	-14.57
5607	Jute twine, cordage, roofs and cables	105.58	120.70	14.32
6101-117	Readymade garments men's women's and girls knitted and crocheted	72389.66	73066.47	0.93
6201-217	Readymade garments men's women's and girls not knitted and crocheted	88990.08	77881.82	-12.48
6305	Sacks and bags, of a kind used for the packing of goods	1071.60	971.26	-9.36
6401-6406	Foot ware with outer soles and uppers of rubber or of plastics and other	3575.36	3396.00	-5.02
6505	Heads and other headgear, knitted or crocheted	385.58	348.87	-9.52
	Total	181320.4	168414.1	-7.12

Table 18. Monthly merchandise import (2 digit HS code)

(In million taka)

H S Code	Commodities	2014-15		% change from previous month
		Mar'15	Apr'15	
1	Live animals	-	.01	
2	Meat and edible meat offal	18.93	.61	-96.78
3	Fishes, crustacean and other aquatic	439.09	487.24	10.97
4	Dairy produces edible product of animal origin.	2739.83	2391.20	-12.72
5	Products of animal origin	478.88	507.00	5.87
6	Live tree and other plants etc.	1.67	.14	-91.62
7	Edible vegetables, roots as tubers	5068.68	4667.15	-7.92
8	Edible fruits and nuts citrus fruits	2072.93	1839.33	-11.27
9	Coffee, tea, mate and spices	1393.60	1682.60	20.74
10	Cereals	13916.78	16377.48	17.68
11	Product of milling industry: malt etc.	257.50	163.41	-36.54
12	Oil seeds and oleaginous fruits	2840.66	4542.51	59.91
13	Lac, gums, resins , vegetable saps & extra	41.24	82.26	99.47
14	Vegetable plaiting materials	49.49	75.24	52.03
15	Animal or vegetable fats and oils	21458.70	15991.04	-25.48
16	Preparations of meat or fish etc.	5.99	5.82	-2.84
17	Sugar and sugar confectionery	9199.57	6611.15	-28.14
18	Cocoa and cocoa preparation	49.99	57.67	15.36
19	Preparations of cereals, flour, starch etc.	549.39	408.60	-25.63
20	Preparations of vegetable, fruits, nuts, etc.	52.15	56.33	8.02
21	Misc. edible preparations	627.24	703.90	12.22
22	Beverages, spirits and vinegar	117.52	67.74	-42.36
23	Residues & waste from the food industries	2491.71	3128.72	25.57
24	Tobacco mfg tobacco substitutes	137.19	108.87	-20.64
25	Salt, sulphur, etc. and plastering metals stone cement	7600.40	8599.72	13.15
26	Ores, slag and ash	423.05	719.33	70.03
27	Mineral, fuels/oils etc.	34733.80	45468.63	30.91
28	Inorganic. Chem.: compounds of specious metals etc.	2472.33	2160.34	-12.62
29	Organic Chemicals	3969.82	4646.67	17.05
30	Pharmaceutical products	338.21	382.61	13.13
31	Fertilizers	6061.08	5947.88	-1.87
32	Tanning/dyeing ext; dye pigments etc.	3795.47	4109.32	8.27
33	Essential Oils, perfumery/toilet pre.	557.24	530.82	-4.74
34	Soap, organic surface-active agents etc.	1134.46	939.56	-17.18

Table 18. Monthly merchandise import (2 digit HS code)

(In million taka)

H S Code	Commodities	2014-15		% change from previous month
		Mar'15	Apr'15	
35	Albuminoidal substitute starches, glues e	499.58	489.26	-2.07
36	Explosives pyrotechnic products etc.	0.4	6.06	1415.00
37	Photographic/cinematographic goods	220.42	254.23	15.34
38	Miscellaneous chem. products	2907.88	3141.3	8.03
39	Plastics and articles thereof	12992.67	11777.86	-9.35
40	Rubber and articles thereof	3181.15	1855.13	-41.68
41	Raw hides & skins, leather	1072.43	1090.38	1.67
42	Articles of Leather/Animal gut	214.6	122.32	-43.00
43	Fur skins & artificial fur. Mfg.	13.46	12.42	-7.73
44	Wood & art. of wood; wood charcoal	1235.34	817.5	-33.82
45	Cork and articles of cork	3.27	2.7	-17.43
46	Manufactures of straw etc.	5.21	2.23	-57.20
47	Pulp/ wood/fibrous cellulosic materials etc.	1022.12	879.13	-13.99
48	Paper & paper board; art. Paper pulps etc.	4016.59	4163.79	3.66
49	Printed Book, News paper & picture	329.13	401.83	22.09
50	Silk	22.52	35.81	59.01
51	Wool, fine/coarse animal hair etc.	332.08	487.9	46.92
52	Cotton	43806.48	52929.93	20.83
53	Other vegetabe, textile fibres, paper/yarn etc.	107.46	72.4	-32.63
54	Man-made filaments	6901.32	7824.31	13.37
55	Man-made staple fibres	10413.11	10402.42	-0.10
56	Wadding felts non-wovens, special yarn etc.	245.73	247.5	0.72
57	Carpet other text. floor coverings	16.86	21.89	29.83
58	Special woven fabrics, tufted textile fabrics etc.	732.45	1052.12	43.64
59	Impregnated, coated, textile fabrics etc.	1095.43	662.43	-39.53
60	Knitted or crocheted fabrics	3059.16	4196.35	37.17
61	Article of apparel. clothing accessor. knit /crocht.	73.23	104.85	43.18
62	Articl of apparel.clothing accessor.n-knit/ crocht.	4871.25	5744.7	17.93
63	Other made up textile articles etc.	82.61	66.82	-19.11
64	Footwear, gaiter & like etc.	681.69	1015.12	48.91
65	Headgear and parts thereof	36.44	14.52	-60.15
66	Umbrellas, sun umbrellas, walk sticks etc.	-	52.35	

Table 18. Monthly merchandise import (2 digit HS code)

(In million taka)

H S Code	Commodities	2014-15		% change from previous month
		Mar'15	Apr'15	
67	Prepared feather & down articles	5.26	20.39	287.64
68	Art of stone, plastic, cement etc.	279.38	222.61	-20.32
69	Ceramic products	339.85	236.66	-30.36
70	Glass and glassware	504.62	492.09	-2.48
71	Natural/culture pearls & precious stones	56.53	55.89	-1.13
72	Iron or steel	12397.89	18955.79	52.90
73	Articles of iron or steel	2823.55	2441.96	-13.51
74	Copper and articles thereof	1171.68	1317.13	12.41
75	Nickel and articles thereof	8.34	5.02	-39.81
76	Aluminum and article thereof	1475.75	1625.93	10.18
78	Lead and articles thereof	456.13	472.34	3.55
79	Zinc and articles thereof	832.83	1412.53	69.61
80	Tin and articles thereof	30.94	67.57	118.39
81	Other base metals, cermet etc.	18.47	51.78	180.35
82	Tools, implements, cutlery etc.	255.82	222.86	-12.88
83	Miscellaneous art of base metal.	352.97	297.37	-15.75
84	Nuclear reactors, boilers etc.	31017.62	29398.78	-5.22
85	Electrical mach. & equipment, parts etc.	12829.01	18018.38	40.45
86	Rail/tramway locomotives etc.	18.27	35.99	96.99
87	Vehicles, other than rail/tram way's & parts etc.	7227.38	6674.97	-7.64
88	Aircraft, space craft and parts.	438.94	28.65	-93.47
89	Ships, boats & floating structures	4174.05	8301.02	98.87
90	Optical, Photograph, Cinematograph, Medical Inst.	1965.1	2252.28	14.61
91	Clocks & watches & parts.	18.31	35.69	94.92
92	Musical /instruments and parts etc.	1.83	3.04	66.12
93	Arms, & ammunition and parts & accessories	76.53	6.05	-92.09
94	Furniture, bedding, mattresses etc.	360.1	530.42	47.30
95	Toys, games & sports requisites & parts etc.	99.92	82.53	-17.40
96	Miscellaneous mfg. articles	1464.99	1820.97	24.30
97	Works/ art, collectors & antiques	0.25	0.18	-28.00
98	Goods commodities nec	0.86	3.41	296.51
Total		306025.2	336527.9	10.62

Table 19. Monthly import of major commodities (4 digits)

(In million taka)

H S Code	Commodities	2014-15		% change from previous month
		Mar'15	Apr'15	
401	Milk & cream	1.96	16.35	734.18
703	Onion & Garlic	1320.84	898.41	-31.98
713	Dried leguminous vegetable	3744.26	3751.73	0.20
804	Dates	134.39	131.62	-2.06
806	Grapes	539.91	248.95	-53.89
808	Apples	369.37	467.81	26.65
904	Pepper	478.97	611.68	27.71
1001	wheat	7855.65	12384.72	57.65
1006	Rice	5081.30	3948.87	-22.29
1108	Starches	199.51	-	-
1201-1212	Oil seeds	2840.65	4542.52	59.91
1507	Soya bean oil	4271.13	5674.45	32.86
1511	Palm Oil	16990.46	9896.97	-41.75
1701	Sugar	9078.58	6466.59	-28.77
2401	Un-manufactured tobacco	110.03	78.40	-28.75
2523	Cement	6258.64	7262.45	16.04
2710	Petroleum product	29804.60	40647.63	36.38
2801-2851	In organic Chemicals	2472.16	2160.27	-12.62
2901-2942	Organic Chemicals	3969.81	4646.67	17.05
3101-3105	Fertilizers	6061.07	5947.88	-1.87
3201-3215	Tanning & dyeing	3795.45	4109.31	8.27
3801-3825	Chemical product	2907.87	3141.20	8.02
3901-3926	Plastic & articles thereof	12992.62	11777.87	-9.35
4801-4823	Paper & paper board	4016.58	4163.79	3.67
5201-5203	Raw cotton	15024.08	17425.71	15.99
5205-5207	Cotton yarn	7211.07	7496.02	3.95
5208-5212	Cotton fabric	21491.27	27909.23	29.86
5402-5406	Synthetic yarn	2718.37	3111.33	14.46
5407-5408	Synthetic fabric	3207.31	3866.12	20.54
5504-5507	Staple fibre	947.20	903.11	-4.65
5509-5511	Yarn of staple fibre	2837.72	2457.16	-13.41
5512-5516	Fabric of staple fibre	4413.78	5306.99	20.24
7201-7229	Iron & steel	12397.90	18955.71	52.89
7301-7326	Article of iron & steel	2823.51	2441.85	-13.52
7601-7616	Aluminum & article thereof	1475.63	1625.86	10.18
8402-8485	Machinery & parts	30861.10	29307.13	-5.04
8501-8548	Electrical goods	12829.08	18018.49	40.45
8607-8609	Rail, tramway, locomotive	18.27	32.78	79.42
8701-8716	Vehicle	7227.33	6674.99	-7.64
8902,8903,8908	Ships, boat, floating structure	4126.06	8256.95	100.12
9001-9033	Optical, Photo, Cinema etc.	1965.15	2252.27	14.61
	Total	256870.6	289017.8	12.51

Table 20. Re-exports Value, April-2015 by 2 digit HS Code.

HS CODE	HS DESCRIPTIONS	Million (In Taka)
	Total Re- export	264.29
03	Fish & crustacean otr aqutic	.57
27	Mineral fuels, oils and waxes	48.62
40	Rubber & articles thereof	.02
41	Raw hides & skins of bovine	3.30
48	Paper & P/board art of p/pulp	.20
49	Printed book,newspaper,picture	.02
51	Wool fine/coarse & woven fabric	9.38
52	Cotton	.45
55	Man-made staple fibers	.82
60	Knitted or crocheted fabrics	1.04
61	Art aprl clth acsor knit /crcht	4.95
62	Artcl aparl clth acesor n – knit	1.54
67	Prepared feathr & down artcles	.53
72	Iron or steel	2.28
73	Articles of iron & steel	17.42
74	Copper & articles thereof	3.46
84	Nuclear rect boil mach & parts	93.40
85	Electrcl machinery ewuipmnt part	28.08
87	Vechicle otr rail/tram rol-stoc	41.10
90	Optical , photo, cinma surgi apts	7.10
94	Furniture,bedding,mattresses	.01

Table 21. Re-imports Value, April-2015 by 2 digit HS Code

HS CODE	HS DESCRIPTIONS	Million (In Taka)
	Total Re- import	1.31
49	Printed book,newspaper,picture	.78
85	Electrcl machinery equipment part	.53

Table 22. Temporary export Value, April -2015 by 2 digit HS Code

HS CODE	HS DESCRIPTIONS	Million (In Taka)
	Total : Temporary- Exports	1060.97
39	Plastics and articles thereof	.60
40	Rubber and articles thereof	.20
73	Articles of iron and steel	585.10
84	Nuclear rect boil mach & parts	359.86
85	Electrc l machinry eqipmnt part	5.96
88	Aircraft,spacecraft part	108.74
90	Optical, photo, cinema surgi apts	.51

Table 23. Temporary Import Value, April -2015 by 2 digit HS Code

HS CODE	HS DESCRIPTIONS	Million (In Taka)
	Total : Temporary- Imports	92.01
85	Electrc l machinery equipment part	87.78
87	Vehicle otr rail/tram rol-stoc	4.23