



জেলা পরিসংখ্যান ২০১১  
পঞ্চগড়

# District Statistics 2011 Panchagarh

December 2013



**BANGLADESH BUREAU OF STATISTICS (BBS)**  
**STATISTICS AND INFORMATICS DIVISION (SID)**  
**MINISTRY OF PLANNING**  
**GOVERNMENT OF THE PEOPLE'S REPUBLIC OF BANGLADESH**

# **District Statistics 2011**

Published in December, 2013

Published by : Bangladesh Bureau of Statistics (BBS)  
Printed at : Reproduction, Documentation and  
Publication (RDP) Section, FA & MIS, BBS

Cover Design: Chitta Ranjon Ghosh, RDP, BBS

ISBN:

For further information, please contact:  
Bangladesh Bureau of Statistics (BBS)  
Statistics and Informatics Division (SID)  
Ministry of Planning  
Government of the People's Republic of Bangladesh  
Parishankhan Bhaban  
E-27/A, Agargaon, Dhaka-1207.  
[www.bbs.gov.bd](http://www.bbs.gov.bd)

COMPLIMENTARY

---

This book or any portion thereof cannot be copied, microfilmed or reproduced for any commercial purpose. Data therein can, however, be used and published with acknowledgement of the sources.



## **Foreword**

I am delighted to learn that Bangladesh Bureau of Statistics (BBS) has successfully completed the 'District Statistics 2011' under Medium-Term Budget Framework (MTBF). The initiative of publishing 'District Statistics 2011' has been undertaken considering the importance of district and upazila level data in the process of determining policy, strategy and decision-making. The basic aim of the activity is to publish the various priority statistical information and data relating to all the districts of Bangladesh. The data are collected from various upazilas belonging to a particular district.

The Government has been preparing and implementing various short, medium and long term plans and programs of development in all sectors of the country in order to realize the goals of Vision 2021. For any pragmatic approach in formulating and evaluating development plans and programs reliable statistics are indispensable. BBS has been performing the major responsibility of supplying comprehensive and accurate statistics at the national level.

The present government, in line with its commitment to decentralize administration, has declared upazila as the focal point of administration regenerating upazila parishad through participatory elections. However, upazila level official statistics are still very inadequate. It is praiseworthy that BBS has undertaken timely program of publishing 'District Statistics 2011' where data representing socio-economic characteristics of upazilas of all districts will be available. I am confident that this publication will be of invaluable help to the planners, administrators, researchers, field level officers as well as other users. Various government, non-government and international organizations closely related to policy formulation and implementation may also find this publication useful.

I sincerely thank Mr. Golam Mostafa Kamal, Director General, BBS for bringing out the publication of 'District Statistics 2011'. I hope that in future 'District Statistics' will be published in much more improved form to make it more effective and informative.

Dhaka  
December, 2013

**(Md. Nojibur Rahman)**  
Secretary  
Statistics and Informatics Division  
Ministry of Planning  
Government of the People's Republic of  
Bangladesh





## **Preface**

The 'District Statistics 2011' is mainly a compilation work of Bangladesh Bureau of Statistics (BBS). The decentralization policy of government has enhanced demand for timely, qualitative and comprehensive statistical data both for administrative and development requirements. The major regular publications of Bangladesh Bureau of Statistics like Statistical Pocketbook of Bangladesh, Statistical Yearbook of Bangladesh and Agricultural Yearbook of Bangladesh provide aggregate data mainly at the national and regional level. Data for smaller administrative unit like upazila often remains absent in such publications. The 'District Statistics 2011' emphasises to provide upazila level data.

The 'District Statistics 2011' provides both structural and flow-type information of almost all of the priority sectors of our national economy depending on data availability both from published and unpublished sources.

The publication of 'District Statistics 2011' would have not been feasible without the wholehearted co-operation of the various government, semi-government, autonomous, non-government offices and other organizations. In particular, the district and upazila level officials extended their total support and supplied all data. I like to express my sincere thanks to them and hope such co-operation will continue in future.

I am obliged and grateful to Mr. Md. Nojibur Rahman, Secretary, Statistics and Informatics Division (SID) for his enormous support and advice to prepare and to finalize this important publication. My sincere thanks also go to all officers of SID for their wholehearted support and sincere co-operation towards accomplishing this document.

I acknowledge the contributions of Mr. Md. Mizanur Rahman, Deputy Director General, BBS and Mr. Ghose Subobrata, Director, FA & MIS, BBS during development of the Document.

The regional and upazila statistics officers of BBS actively participated in preparation of the report. I thank them all. Finally, I thank Mr. Iftekhairul Karim, Focal Point Officer and Mr. Nasir Uddin Ahmmed, Deputy Director & Ex.Focal Point Officer as well as staff members of Bangladesh Bureau of Statistics for their untiring efforts in making the 'District Statistics 2011' a success. Through user's interaction and feedback, we hope to improve the coverage and quality of information contained in this edition. Any suggestion for improvement of the publication will be highly appreciated.

Dhaka  
December, 2013

**(Golam Mostafa Kamal)**  
(Additional Secretary)  
Director General  
Bangladesh Bureau of Statistics



## **Acknowledgement**

The report on ‘District Statistics 2011’ is the result of the initiative of the honorable Secretary, Statistics and Informatics Division (SID). Ex-Director General Mr. Md. Shahjahan Ali Mollah and the present Director General Mr. Golam Mostafa Kamal of Bangladesh Bureau of Statistics (BBS) have guided us in every steps of the journey to whom we remain grateful.

All the data providers of different offices/organizations of respective district and upazila deserve special thanks for their cooperation. We will be in need of such cooperation in future too and hope that the same hospitality will be received from them again.

I gratefully acknowledge the contribution of all members of Editors’ Forum and also of Project Directors’ Forum of BBS in editing this compilation work.

I acknowledge the contribution of Begum Aziza Parvin, Director, Computer Wing, Mr. Md. Mofizul Islam, Programmer and the members of data entry team.

I would like to thank Mr. Iftekhairul Karim, Focal Point Officer for his rigorous exercise and valuable contribution in bringing out this publication. I also acknowledge the hard work of Mr. Nasir Uddin Ahmmed, Deputy Director & Ex-Focal Point Officer for this activity. My sincere thanks also go to the respective Regional Statistical Officers, Upazila Statistical Officers and the employees of BBS.

I acknowledge the work of Mr. Md. Abdul Mannan, Administrative Officer, Mr. Mohammad Abdullah, Assistant Statistical Officer, Mr. Md. Monzurul Islam, Assistant Statistical Officer and Mr. Md. Yeasin Miah, Statistical Investigator for their sincere assistance to the Focal Point Officer in many possible ways. Officers and staff of Reproduction, Documentation and Publication Section of FA & MIS have contributed in printing the report in possible shortest time.

Finally, I want to be submissive that this work of compiling data from various secondary sources at district and upazila level is undertaken after a long time gap of almost 25 years. Some errors or unwilling mistakes may remain there in spite of our full hearted endeavor to make it an error free publication. It will be highly appreciated if any user kindly communicates any shortcomings of the report.

Dhaka  
December, 2013

**Ghose Subabrata**  
Director  
Finance, Administration & MIS  
Bangladesh Bureau of Statistics





## Contents

Table No.	Topics	Page no.
	Foreword.....	<b>Error! Bookmark not defined.</b>
	Preface.....	<b>Error! Bookmark not defined.</b>
	Acknowledgement .....	<b>Error! Bookmark not defined.</b>
	District Map .....	xv
	Upazila and Union/Ward with Geo-code.....	xvi
 <b><i>Chapter 1: Introduction</i></b>		
	District at a Glance.....	3
	Concepts and Definitions.....	7
 <b><i>Chapter 2: General Information</i></b>		
2.01	Broad classification of area 2011.....	15
2.02	Number of municipality, union, mauza, mahalla and village 2011 .....	15
2.03	Number of household, population and density 2011 .....	15
2.04	Population and literacy rate of 1991, 2001 & 2011 and number of voter 2011 .....	16
2.05	Population by religion 2011 .....	16
2.06(a)	Percentage distribution of population (10 years and above) by marital status 2011.....	16
2.06(b)	Percentage distribution of population (10 years and above) by marital status 2011 .....	17
2.07	Percentage distribution of population by type of disability 2011 .....	17
2.08	Number of religious institution 2011 .....	17
2.09	Number of pond, dighee, flood camps/shelter, cyclone shelter, stadium/ playground, park/ amusement park 2011 .....	18
2.10	Number of filling station, fire brigade station, police station/camp, union land (tohsil) office, BOP (BGB camp), cyber cafe 2011 .....	18
2.11	Number of growth centre, hat /bazar, poultry farm, dairy farm, nursery, horticulture centre, brick kiln, decorator service 2011 .....	18
2.12	Name of land/river port, important or historical/tourist places/objects, important/famous crop or food production 2011 .....	19
 <b><i>Chapter 3: Meteorology</i></b>		
3.01	Temperature, rainfall, humidity during the year 2008-2011.....	23
3.02	Occurrence of storm during the year 2008-2011 .....	23
3.03	Occurrence of river erosion during the year 2008-2011 .....	23
 <b><i>Chapter 4: Agriculture</i></b>		
4.01	Number of agriculture holding by tenure.....	27
4.02	Land area based on utilization 2008 .....	27
4.03	Land utilization (temporary cropped area) 2008 .....	27
4.04	Land area under irrigation for selected crops 2008 .....	28
4.05	Cropped area sprayed with plant protection measures 2008 .....	28
4.06	Number of holding reporting cattle head 2008.....	28
4.07	Number of holding reporting selected livestock species 2008 .....	29

4.08	Selected poultry/birds 2008 .....	29
4.09	Area of high, medium and low land 2008.....	29
4.10	Broad soil classification 2008.....	30
4.11	Irrigation by means 2010-2011 .....	30
4.12	Number of low lift pump scheme 2010-11 .....	30
4.14	Number of selected agricultural machine 2008 .....	31
4.15	Use of chemical fertilizer 2010-11 .....	31
4.16	Distribution of chemical fertilizer 2010-11 .....	32
4.17	Area and production of rice crops 2010-11 .....	32
4.18	Area and production of rice crops 2009-2010 .....	32
4.19	Area and production of wheat, jute and sugarcane 2010-11 .....	33
4.20	Area and production of wheat, jute and sugarcane 2009-10.....	33
4.21	Area and production of lentil (masur), mug and maize crops 2010-11 .....	33
4.22	Area and production of lentil (masur), mug and maize crops 2009-10 .....	34
4.23	Area and production of pulse by type 2010-11.....	34
4.24	Area and production of potato by type 2010-11 .....	34
4.25	Area and production of potato by type 2009-10 .....	35
4.26	Area and production of oil seed by type 2010-11 .....	35
4.27	Area and production of oil seed by type 2009-10.....	35
4.28	Area and production of pepper, onion and garlic 2010-11 .....	36
4.29	Area and production of pepper, onion and garlic 2009-10 .....	36
4.30	Area and production of turmeric and ginger 2010-11 .....	36
4.31	Area and production of turmeric and ginger 2009-10 .....	37
4.32	Area and production of turmeric and ginger 2010-11 .....	37
4.33	Area and production of turmeric and ginger 2009-10 .....	37
4.34	Area and production of pumpkin, parble (potol) and cabbage 2010-11 .....	38
4.35	Area and production of pumpkin, parble (potol) and cabbage 2009-10.....	38
4.36	Area and production of brinjal, lady's finger and arum 2010-11 .....	38
4.37	Area and production of brinjal, lady's finger and arum 2009-10 .....	39
4.38	Area and production of cauliflower and cucumber 2010-11 .....	39
4.39	Area and production of cauliflower and cucumber 2009-10 .....	39
4.40	Area and production of papaya, guava, lime and lemon 2010-11 .....	40
4.41	Area and production of papaya, guava, lime and lemon 2009-10 .....	40
4.42	Area and production of jackfruit, banana and pineapple 2010-11 .....	40
4.43	Area and production of jackfruit, banana and pineapple 2009-10.....	41
4.44	Area and production of mango, litchi and blackberry 2010-11 .....	41
4.45	Area and production of mango, litchi and blackberry 2009-10.....	41
4.46	Area and production at water melon/melon (bangi) in following years .....	42
4.47	Area and production at tobacco in following years .....	42
4.48	Cotton and Sericulture cultivation for the year 2010-11 .....	42
4.49	Number and area of pond, dighee and other area 2010-2011 .....	43
4.50	Number of fisherman and production of fish in following years.....	43

### **Chapter 5: Industry**

5.01	Number of selected industry 2011 .....	47
5.02	Number of jute mill and number of worker 2011 .....	47

5.03	Number of handloom establishment and loom 2011 .....	47
5.04	Employment status in handloom industry 2011.....	48
5.05	Dying facilities of handloom industry 2011 .....	48
5.06	Number of small scale and cottage industry 2011 .....	48
5.07	Number of establishment and person engaged in cottage industry 2011.....	49
5.08	Number of bamboo and cane industry and person engaged 2011 .....	49
5.09	Number of wooden furniture and person engaged 2011.....	49
5.10	Number of Saw mill and person engaged 2011 .....	50
5.11	Number of auto rice mill and person engaged 2011 .....	50
5.12	Number of rice mill and person engaged 2011 .....	50
5.13	Number of oil mill and person engaged 2011.....	51
5.14	Number of bakery and person engaged 2011 .....	51
5.15	Number of pottery and person engaged 2011 .....	51
5.16	Number of printing press and person engaged 2011 .....	52
5.17	Number of tailoring shop and person engaged 2011 .....	52
5.18	Number of garments factory (for local use) and person engaged 2011 .....	52
5.19	Number of cold storage and capacity in following years .....	53
5.20	Number of flour mill and person engaged 2011 .....	53

### ***Chapter 6: Education***

6.01	Literacy (7+) rate of 2001 & 2011 .....	57
6.02	Number of Government primary school (class I-V), teacher and student 2011 .....	57
6.03	Number of registered primary school (class I-V), teacher and student 2011 .....	57
6.04	Number of private (non-registered) primary school (class I-V), teacher and student 2011 ....	58
6.05	Number of kindergarten school (pre schooling), teacher and student 2011 .....	58
6.06	Number of NGO school, teacher and student 2011 .....	58
6.07	Number of Government secondary school, teacher and student 2011.....	59
6.08	Number of Non-government secondary school, teacher and student 2011 .....	59
6.09	Number of school & college (operating jointly), teacher and student 2011 .....	59
6.10	Number of Government college, teacher and student 2011.....	60
6.11	Number of Non Government college, teacher and student 2011 .....	60
6.12	Number of madrasah, teacher and student under the madrasah education board 2011 .....	60
6.13	Number of kawmi madrasah, teacher and student 2011 .....	61
6.14	Number of ebtedayee madrasah 2011 .....	61
6.15	Number of technical and vocational institution, teacher and student 2011 .....	61

### ***Chapter 7: Health and Social Welfare***

7.01	Number of Government health complex and health personnel 2011 .....	65
7.02	Number of private hospital/clinic and related health personnel 2011 .....	65
7.03	Number of diagnostic centre and related health personnel 2011 .....	65
7.04	Number of missionary hospital and charitable dispensary 2011 .....	66
7.05	Number of physician/practitioner 2011 .....	66
7.06	Number of health centre, providing health and family planning service 2011.....	66
7.07	Number of existing family planning personnel 2011 .....	67
7.08	Status of family planning activity 2011 .....	67
7.09	Number of cooperative society and member 2011 .....	67

7.10	Number of Government office, post office, bank, NGO and dak-banglow/rest house 2011 ..	68
7.11	Number of cinema hall, registered club, auditorium, public library and orphanage 2011 .....	68
7.12	Number of different club and store 2011 .....	68
7.13	Number of hat-bazar, growth centre, hotel & restaurant 2011 .....	69
7.14	Number of warehouse and their storage capacity 2011 .....	69
7.15	Progress of rural electrification 2011 .....	69
7.16	Number of technical personnel 2011 .....	70
7.17	Number of community clinic and person engaged 2011 .....	70

### ***Chapter 8: Transportation and Communication***

8.01	Length of metalled, semi metalled and unmetalled road 2011 .....	73
8.02	Length of railway and water way 2011.....	73
8.03	Length of embankment road & canal 2011.....	73
8.04	Number of bridge, baily bridge, culvert, pool, shako, etc. 2011 .....	74
8.05	Number of railway station, steamer/launch station and bus stand 2011 .....	74
8.06	Number of registered rickshaw, van, easy bike and auto-rickshaw 2011.....	74
8.07	Number of non-registered rickshaw, van, easy bike and auto-rickshaw 2011 .....	75

### ***Chapter 9: Price and Wage***

9.01	Average price of selected item 2011.....	79
9.02	Annual average wholesale price of selected building material 2011.....	79
9.03	Daily average wage rate of agricultural labour 2011 .....	79
9.04	Daily average wage rate of construction labour 2011 .....	80
9.05	Daily average wage rate of non-agricultural labour 2011 .....	80
9.06	Average doctor's fee per patient 2011 .....	80
9.07	Average rate of vehicle per kilo meter 2011.....	81

### ***Chapter 10: Urban Area Statistics***

10.01	Number of ward, mahalla and household by municipality 2011 .....	85
10.02	Area, population and density by municipality 2011 .....	85
10.03	Number of primary school (Class I-V), teacher and student by municipality 2011 .....	85
10.04	Number of secondary school, teacher and student by municipality 2011 .....	86
10.05	Number of secondary school & college (operating jointly), teacher and student by municipality 2011 .....	86
10.06	Number of college, teacher and student by municipality 2011 .....	86
10.07	Number of vocational institute by municipality 2011 .....	87
10.08	Number of family planning clinical centre by municipality 2011 .....	87
10.09	Number of family planning personnel working by municipality 2011.....	87
10.10	Number of fire service unit and causality by municipality 2011 .....	88
10.11	Number of cinema hall and audience capacity by municipality 2011 .....	88
10.12	Institutional accommodation facility by municipality 2011 .....	88
10.13	Other accommodation facility by municipality 2011 .....	89
10.14	Police personnel and criminal offences by municipality 2011 .....	89
10.15	Medical institution and personnel by municipality 2011.....	89

**Chapter 11: Public Administration, Accounts and Banking**

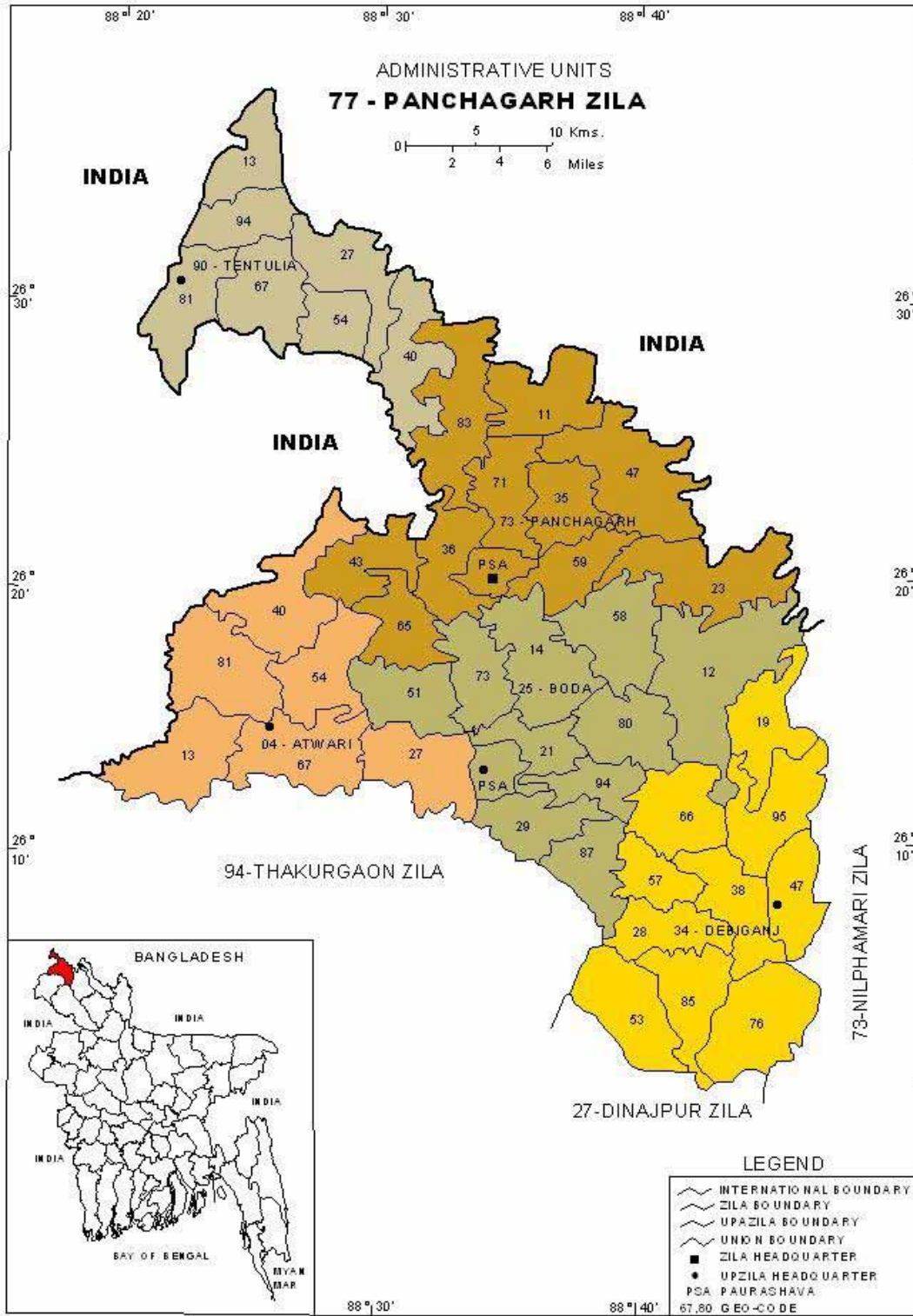
11.01	Sanction post of Government employee by category 2011 .....	93
11.02	Existing position of Government employee by category 2011 .....	93
11.03	Number of employee by type 2011 .....	93
11.04	Number of employee by local Government institution 2011 .....	94
11.05	Number of branch of nationalized commercial bank 2011 .....	94
11.06	Number of branch of private commercial bank 2011 .....	94
11.07	Number of branch of specialized (Krishi, Co-operative etc) bank 2011 .....	95
11.08	Number of branch of Grameen bank 2011 .....	95
11.10	Number of insurance company 2011 .....	95
11.12	Number of co-operative society 2011 .....	96
11.13	Numbers of money exchange agency 2011 .....	96
11.14	Number of branch and accounts of Sonali and Janata bank 2011 .....	96
11.15	Number of branch and accounts of Rupali and Agrani bank 2011 .....	97
11.16	Number of branch and accounts of Pubali and Uttara bank 2011 .....	97
11.17	Number of branch and accounts of Krishi and Co-operative bank 2011 .....	97

**Chapter 12: Miscellaneous**

12.01	Number of Government health complex and health facility 2011 .....	101
12.02	Number of Non-Government health complex and health facility 2011 .....	101
12.03	Number of person/institute borrowing money from nationalized bank 2011 .....	102
12.04	Number of person/institute borrowing money from private commercial bank 2011 .....	102



# District Map



## 77 - Panchagarh District Upazila and Union/Ward with Geo-code 2011

### 04 - Atwari Upazila

- 13 - Alowa Khowa Union
- 27 - Balarampur Union
- 40 - Dhamor Union
- 54 - Mirzapur Union
- 67 - Radhanagar Union
- 81 - Taria Union

### 25 - Boda Upazila

- 12 - Bara Shashi Union
- 14 - Benghari Banagram Union
- 21 - Boda Union
- 29 - Chandanbari Union
- 51 - Jhalaishalsiri Union
- 58 - Kajal Dighi Kaliaganj Union
- 73 - Maidan Dighi Union
- 80 - Marea Bamanhat Union
- 87 - Panchpir Union
- 94 - Sakoa Union

### Boda Paurashava

- 01 - Ward No-01
- 02 - Ward No-02
- 03 - Ward No-03
- 04 - Ward No-04
- 05 - Ward No-05
- 06 - Ward No-06
- 07 - Ward No-07
- 08 - Ward No-08
- 09 - Ward No-09

### 34 - Debiganj Upazila

- 19 - Chilahati Union
- 28 - Dandapal Union
- 38 - Debidoba Union
- 47 - Debiganj Union
- 53 - Hazradanga Union
- 57 - Pamuli Union
- 66 - Saldanga Union
- 76 - Mallikadaha Union
- 85 - Sundar Dighi Union
- 95 - Tepriganj

### 73 - Panchagarh Sadar Upazila

- 11 - Amarkhana Union
- 23 - Chaklarhat Union
- 35 - Hafizabad Union
- 36 - Dakkamara Union
- 43 - Garinabari Union
- 47 - Haribhasa Union
- 59 - Kamat Kajal Dighi Union
- 65 - Magura Union
- 71 - Panchagarh Union
- 83 - Satmara Union

### Panchagarh Paurashava

- 01 - Ward No-01
- 02 - Ward No-02
- 03 - Ward No-03
- 04 - Ward No-04
- 05 - Ward No-05
- 06 - Ward No-06
- 07 - Ward No-07
- 08 - Ward No-08
- 09 - Ward No-09

### 90 - Tentulia Upazila

- 13 - Banglabandha Union
- 27 - Bhojanpur Union
- 40 - Debnagar Union
- 54 - Buraburi Union
- 67 - Salbahan Union
- 81 - Tentulia Union
- 94 - Tirnaihat Union



# **CHAPTER 1**

## **Introduction**



## District at a Glance

**Background:** Panchagarh District is the north frontier district of Bangladesh. It was formerly a sub-division of Dinajpur District. It became a sub-division in 1980 and was upgraded to a district in 1984. It is generally believed that there were *Panch* (means five) *Garhs* (means Jungles) namely Mir garh, Hossen garh, Daben garh, Rajan garh and Bhitari garh in the present place of the district, in consequence of which it was named Panchagarh.

**Location and area:** Panchagarh is bounded on the north by Darjeeling District of West Bengal State of India, east by Jalpaiguri District and Coochbihar District of West Bengal State of India and Nilphamari District, south by Dinajpur District and Thakurgaon District and west by West Dinajpur District and Purnia District of West Bengal State of India and Thakurgaon District. It lies between 26°00' and 26°38' north latitudes and between 88°19' and 88°49' east longitudes. The total area of the district is 1404.62 sq. km. (542.00 sq. miles).

**Administration:** Panchagarh was a thana under Jalpaiguri District of West Bengal during the British rule. It was under Dinajpur district at the time of partition in 1947. In 1980, Panchagarh was turned into a subdivision by consisting of Panchagarh, Boda, Debiganj, Atwari and Tentulia thanas. Panchagarh was elevated to a district in 1984. The district consists of 5 upazilas, 43 unions, 420 mauzas, 825 villages, 2 paurashavas, 18 wards and 64 mahallas. The upazilas are Atwari, Boda, Debiganj, Panchagarh and Panchagarh Sadar. According to the population census 2011, total number of households of Panchagarh district is 228 thousand. The total population of the district is 988 thousand. Panchagarh sadar has the highest population of 272 thousand while Tetulia has the lowest population of 125 thousand.

**Township:** Panchagarh Paurashava was established in 1985. The total area of the Paurashava is 20.72 sq. km. It consists of 9 wards and 32 mahallas.

**Enclaves (Chhitmahal):** The Indian enclaves in the zila are Puthimari, Daikhat, Shalbari, Kajaldighi, Natak-toka and Nazirganj in Boda Upazila; Behula-danga, Balapara Kotbhajani and Dahla Khagrabari in Debiganj Upazila; Garati and Singimari in Panchagarh Sadar Upazila. Total area of the enclaves is 4837 hectare and population is 23963.

**Marks of the War of Liberation:** Mass killing site in the Char (pasture) area on the eastern bank of the Karatoya river adjacent to the old Dakbungalow in Panchagarh Town; mass grave on the bank of the Punna-dighi near Mirzapur and at Dangi in Atwari thana; a few graves of the martyrs at village Bamanpara in Bhajanpur; Shaheed Faruq Ahmad memorial monument at Dhakka-mara in Panchagarh town bear the testimony of the War of Liberation in Panchagarh District.

**Temperature, Soil and Rainfall:** The annual average temperature of the district varies from maximum 30.2°C to minimum 10.1°C and the average rainfall of the district is 1955 mm. The soil of this district is basically sandy, alluvial and bears close affinity with the soil of the old Himalayan basin. On the northern part of the district there exists underground layer of pebbles.

**Main Rivers:** Karatoya, Atrai, Tista, Mahananda, Tangon, Dahuk, Pathraj, Bhulli, Talma, Nagar, Chawai, Kurum, Versa, Tirnoi and Chilka are the main rivers of this district.

**Main Crops:** The major agricultural crops of Panchagarh Zila are paddy, jute, wheat, potato and sugarcane. Extinct and nearly extinct crops are barley, aus paddy and kaun.

**Main Fruits:** The common fruits found in this zila are mango, wood apple, jackfruit, black berry, guava, banana, tamarind, etc.

**Economic situation:** The economy of Panchagarh is predominantly agrobased. According to Census of Agriculture 2008 total holdings are 203,831. Among 203,831 holdings of the district, 68.12% holding are farms that produce varieties of crops, namely local and HYV paddy, wheat, jute, vegetables, spices, pulses, oilseeds, sugarcane and others. Various fruits like mango, banana, Jackfruit and coconut etc. are grown. Besides crops, livestock and poultry are main sources of household income. There are some non agricultural activities exist in this district. The table-1 showing the type and number of establishments along with persons engaged in those establishments are given below:

**Table-1: Number of Establishments and Persons Engaged by Activity**

Code	Activity	Establishments			Persons engaged		
		Total	Urban	Rural	Total	Male	Female
C	Mining and quarrying	816	0	816	5368	4155	1213
D	Manufacturing	1594	238	1356	9026	7910	1116
E	Electricity, gas and water supply	11	4	7	51	46	5
F	Construction	6	1	5	29	27	2
G	Wholesale and retail trade	13624	3516	10108	24856	23863	993
H	Hotels and restaurants	1530	283	1247	4869	4544	325
I	Transport, storage and communication	498	180	318	1366	1320	46
J	Bank, insurance and financial institution	168	62	106	1750	1317	433
K	Real estate and renting	145	78	67	327	323	4
L	Public administration and defense	291	166	125	3119	2839	280
M	Education	1655	105	1550	9180	7237	1943
N	Health and social work	383	106	277	1749	1015	734
O	Community, social and personal services	3775	471	3304	7679	7345	334
<b>Panchagarh District</b>		<b>24496</b>	<b>5210</b>	<b>19286</b>	<b>69369</b>	<b>61941</b>	<b>7428</b>

Source: Census of Non-farm Economic Activities 2001 - 2003

**Flora:** One comes across the tree of all sizes and varieties on both sides of the roads. Amongst these the most conspicuous are the banyan tree (*Ficus benghalensis*) the peepul (*Ficus religiosa*), the pakur (*Ficus infectoria*), the simul or cotton tree (*Bombax malabaricum*), the neem (*Azadirachta indica*), the mango (*Mangifera indica*) the jack fruits tree (*Artocarpus heterophyllus*), the babla (*Acacia nilotica*), jam/black berry (*Syzygium cumini*), guava (*Psidium guajava*), banana (*Musa sapientum*), bel/wood apple (*Aegle marmelos*), tamarind (*Tamariandus indica*), palas and hijal (*Barringtonia acutangula*) trees are also seen in abundance everywhere in the district. The villages are embowered in greenery; clumps of wild bamboos are to be seen on all sides and the banks of the river and old tanks are overgrown with thickers of shrubs and brambles. The palmyra palms or tal trees are and date palm or khejur trees are much in evidence and give distinctive note to the scenery. In parts of the district especially in the neighborhood of some of the large beels, stretches of grass and jungle are found. In the marshes some varieties of reed grow which are used

for various purposes, the ikra (*Saccharum arundinaeum*) which, when set upright and plastered with mud, makes an excellent house wall. The nagarmutha, a species of tall reed with atriangular blade or stem used for making sleeping mats; thekhaskhas (*Andropogon muricatus*), a plant with an odorless root used for making screens, which, when moistened from pleasant protection against the west winds of the hot season. The sunny grass called in the vernacular chhan is used for thatching. The nal khagra (*Phragmites karka*) a species of tall reed with a feathery top, and the sola (*Aeschynomene aspera*), from whose root a fine white pith, greatly used for making sun helmet (Sola hat), floats for fishing nets, and for making toys is obtained are common in many of the old tanks and marshy places. The finest trees in the district are undoubtedly the figs.

A few varieties of bamboo are plenty in common in the district and utilized for so many purposes. Of these, bara bans is the largest most valuable and most generally planted. It is used for posts, rafters, beams and some times for firewood. Another valuable bamboo is the jati bans, which provide valuable materials like battens, crosspieces etc for building houses, the makla bans is the chiefly employed in making mats and baskets. The kanthal is the another well known variety and is utilized in making fence and spear shafts.

Two species of cane, a thick and a thin variety are found in the district in wood and in thickets near villages where the soil is sufficiently rich and moist. The thin variety is employed for baskets and wicker work. The thick variety is not much used.

The district does not possess many low-lying areas, beel or marshy places and thus the aquatic flora are not so rich compared to other district of Bangladesh. However, the water lilies, lotus vallisuaris elodea species are commonly met with in ponds tanks and shallow stagnant rivers.

Mehogany, Jackfruit trees, mangoes, debdaru etc are usually planted along the roadsides and are the common source of timber. Besides these sal (*Shorea robusta*) trees are grown in different parts of the district and kept as reserve forest areas.

## Fauna

**Mammals :** It appears from the old records that till the end of the 19<sup>th</sup> century, the district had a rich mammalian fauna. Tiger and leopard were widely distributed and other cats like jungle cat (*Felis chaus*), fishing cat (*Prionailurus viverrinus*) and leopard cat were also very common in the district. Other mammals like buffalo (*Bison bison*), bara-singha or swamp deer (*Cervus duvauceli*), hog deer (*Axis poreinus*), badger, civet cat, wild boar (*Sus scrofa*), rhesus monkey (*Macaca mullata*) etc. were also common in the district. But with the passing of time and following the destruction of forest and jungles for cultivation there has a rapid decline of the mammalian fauna especially from the beginning of the 20<sup>th</sup> century.

Leopards are still seen in many parts of the district as they can get cover in the neighborhood of villages in old graveyard, ruined remains of temples, mosques and dwelling houses. Other mammals still occurring in the district include badger civet, mongoose (*Herpestes edwardsi*), jungle cat (*Felis chaus*), fishing cat (*Prionailurus viverrinus*), rabbit, jackal (*Canis aureus*), bat (*Rousettus leschenaulti*) rat (*Rattus rattus*), Gangetic dolphin etc.

**Birds:** Although the birds population has been affected by the disappearance of its natural habitats, there are still a large number of birds in the district. The birds of the district include vulture (*Gyps bengalensis*) of different kind, kite (*Milvus migrans*), hawk, owl (*Bubo cyclenensis*), crow (*Corvus macrorhunchos*), cuckoo (*Cuculu micropterus*), kingfisher (*Alcedo attjos*), green

pigeon, wood pigeon and different kinds of doves (*Streptohelia suratennis*). Amongst water birds, the most important are the common coot, the moorhen and several kinds of heron (*Mycticarax mycticarax*) and crane.

**Fish:** The district was once famous for its fish and was known in the Mahabharat as Matsya Desh or the fish country. The fish supply in the district is now imported from outside. For this reason, the demand of fish is fullfil by outside in this district .The local supply of fish includes ruhi (*Labeo rohita*), boal (*Wallago attu*), Magur (*Clarias batrachus*), pabda (*Ompok pabda*), shoil (*Channa striatus*), taki (*Channa punctatus*) and koi (*Anabas testudineus*).

**Reptiles and amphibians:** As regards reptiles, snakes are fairly common the poisonous varieties being the cobra and the karait, king kobra (*Ophiophagus hannah*) the banded katait and the python (*Python molurus*) are also occasionally found.

## Concepts and Definitions

### 1. Population and Housing Census 2011

The population and housing census is the unique source of reliable and comprehensive data about the size of the population of the country, major socio-economic and socio-demographic characteristics.

It is the total process of collecting, compiling, evaluating, analyzing and publishing or otherwise disseminating demographic, economic and social data pertaining, at a specified time, to all persons in a country. The essential features of a population census are individual enumeration, universality within a defined territory, simultaneity and defined periodicity.

The population and housing census provides information on the geographic and administrative distribution of the population and household in addition to the demographic and socioeconomic characteristics of all the people in the country. The data from the census are classified, tabulated and disseminated so that political leaders, election officials, planners, national organizations including NGOs and civil society, regional and international organizations can use the data in decision-making.

The purpose of community report is to disseminate census data by communities (ward/mahalla in urban area and union/mauza/village in rural area). Data on all key variables namely area, household, population by sex and age group, ethnic population, literacy rate, marital status, school attendance, employment status and religion as well as physical facilities such as source of drinking water, sanitation, electricity and dwelling units have been presented in this report. The planners, researchers and policy makers as well as development partners and community administrators will find this report as a valuable reference for use in advising plans and programs for advancing welfare and well-being of the common people, in particular and the community in general.

#### Household

Persons, either related or unrelated, living together and taking food from the same kitchen constitute a household. A single person living and eating alone forms one-person household.

#### Literacy

It denotes ability to write a letter in any language. Literacy status assessment is made for population 7 years and over.

#### Community

It refers to the following five lower geographic, administrative or revenue units:

- i) **Union:** Smallest administrative rural geographic unit comprising of mauzas and villages and having union parishad institution.
- ii) **Mauza :** Mauza is the lowest administrative unit having a separate jurisdiction list number (J.L. No.) in revenue records. Every mauza has its well-demarcated cadastral map. Mauza should be distinguished from local village since a mauza may consist of one or more villages.

- iii) **Village:** Lowest rural geographic unit either equivalent to a mauza or part of a mauza.
- iv) **Ward:** Smallest administrative urban geographic unit comprising of mahallas and having ward council institution.
- v) **Mahalla:** Lowest urban geographic unit having identifiable boundaries.

### **Urban Area**

It corresponds with area developed around a central place having such amenities as metalled roads, improved communication, electricity, gas, water supply, sewerage, sanitation and also having comparatively higher density of population with majority population in non-agricultural occupations.

**i) City Corporation:** It includes city corporation area declared by the Ministry of Local Government.

**ii) Paurashava/Municipality Area:** It includes paurashavas incorporated and administered by local government under Paurashava Ordinance, 1977.

## **2. Agriculture Census year and reference period**

The census year extends over twelve consecutive months having for different census items the different reference periods or days of data collections. Some items have a year or week reference period. Some others have a specific reference day.

The census year covered twelve months from 1 Baishak to 30 Choitra, 1414 Bangla Shal (BS). This year was the reference period for such census items as operated land use, crops, agriculture employment, livestock & poultry deaths and agriculture loan. A single reference day was used for items like holdings, farm size, land tenure, farm population, livestock & poultry inventories and agriculture implements.

The different census items by their reference periods or days are shown below:

### **Agriculture holding**

An agriculture holding is a techno-economic unit of agricultural production under single management comprising all livestock kept and all land used wholly or partly for agricultural production purposes without regard to title, legal form or size. Single management may be exercised by either an individual holder or jointly by two or more individuals or holders or by a judicial person such as a corporation, co-operative or government agency. A holding may consist of one or more parcels (fragments of land) located in one or more areas or mauzas or in more than one administrative unit or division provided that all separate parcels or fragments form parts of same technical unit under operational control of same management.

The definition covers practically all holdings/households engaged in agricultural production of both crops and livestock. Some agriculture holdings may have no significant agricultural land, e.g. holdings keeping livestock, poultry and hatcheries for which land is not an indispensable input for production.



### **Farm holding**

A farm holding is defined as being an agricultural production unit having cultivated land equal to or more than 0.05 acres. Farm holdings are classified into following three broad groups:

- (a) **small:** Farm holdings having minimum cultivated land 0.05 acre but operated land more than this minimum but upto 2.49 acres.
- (b) **medium:** Farm holdings having operated land in between 2.50 to 7.49 acres.
- (c) **large:** Farm holdings having operated land 7.50 acres and above.

Small cultivated land 0.04 acre or less is generally used for kitchen garden growing mainly vegetables. Often seeds of white gourd, water gourd, pumpkin and other strains are sown on households; but these creepers spread out around house roofs and other structures. As such, the minimum cultivated land considered for qualifying to be a farm holding is 0.05 acres.

### **Non-farm holdings**

A non-farm holding is defined as being the one which has neither cultivated nor operated land or has cultivated land less than 0.05 acre.

### **Tenancy**

Owner holdings are those having and operating their owned land and who may or may not be leasing out land.

Tenant holdings are those having no owned land but operating land taken from others on share cropping basis or on other terms.

Owner-cum-tenant holdings are those having owned land and who may or may not be leasing out their own land to others and who may be taking land from others on share cropping basis or on other terms.

### **Agriculture work**

Agriculture work signifies all activities of holder and his/her labour force doing planning, management, and operation of a holding. It includes land preparation, sowing, weeding, harvesting, feeding and tending livestock & poultry, kitchen gardening, supervising agricultural workers, keeping farm records & accounts, preparing agriculture products for marketing (including packaging), repairing farm equipment, constructing farm buildings & fences, and engaging in land reclamation and improvement and other related activities. It excludes home and other family domestic chores.

### **Area under pond**

The pond area remains under water almost through out the year. Normally, households use pond water for various domestic and sometimes agriculture purposes. Ponds are also generally used for fish culture.

In the census the pond area data were collected separately for both single ownership and joint ownership of households.

### **Area under temporary crops**

It is the land area planted to crops having growing cycle or length of life less than one year. These are the temporary crops such as paddy, wheat, jute, cotton, tobacco, sugarcane, pulses, oil seeds, potato, vegetables and other seasonal crops. A list of temporary crops for which data were collected separately was given in back page of "Tally Sheet". The minimum area recorded for a temporary crop was 0.01 acre. Area under temporary crops and temporary-crops net area are equivalents.

### **Area under permanent crops**

It is the land area planted to crops which remain standing for a long period of time and do not need to be replanted after a seasonal harvest. Mango, jackfruit, coconut, guava, lemon, and other fruit varieties are all permanent crops.

### **Current fallow**

It is land brought into cultivation but left out uncultivated in census year for fertility regaining and improvement or for other reasons.

### **Net cultivated area**

This is land area actually cropped during the census year regardless of number of crops grown plus current fallow. It includes areas under temporary and permanent crops and also current fallow.

### **Permanent fallow**

It is land not available for cultivation due to coming into residence and commercial & other uses. Play ground, graveyard, wild shrubs and jungles, marshy land, and the like fall in this category.

### **Irrigated area**

This is area of total land brought under irrigation coverage for growing crops with irrigations done through mechanical or manual means. Irrigated area classifications fall into two categories: (1) surface water irrigation with main water sources being rivers, canals, beels, ponds, and other water bodies; and (2) underground water irrigation with water lifted by shallow tube-wells, deep tube-wells, and country traditional devices. The irrigation equipments are run by electricity, diesel or petrol, or manual labour.

### **Cattle and Buffalo**

Cattle and buffalo heads owned by households on day of enumeration were counted.

### **Goats and Sheep**

Goats and sheep owned by households on day of enumeration were counted.

### **Fowls, Ducks and Pigeons**

Fowls, ducks, and pigeons owned by households on day of enumeration were counted.

### **Temporary crops gross area**

Areas aggregated for all temporary crops grown in the census year have made **temporary crops gross area** greater than **temporary crops net area** since the latter has within it the same land cropped more than once in different seasons of a year.

### **Intensity of cropping**

It is percentage of temporary crops gross area in comparison with temporary crops net area. It is expressed as follows:

$$\text{Intensity of cropping} = \frac{\text{Temporary crops gross area}}{\text{Temporary crops net area}} \times 100$$

### **Cereals**

Main cereals are rice and then wheat. Other cereals are jab, barley, cheena, maize, kaun, bajra and joar.

### **Pulses**

Main and common pulses are gram, mung, lentil, arhar, gari kalai, khesari and pea.

### **Oil seeds**

Main oil seeds are rape and mustard, sesamum, linseed, groundnut, soybean, sunflower and castor.

### **Vegetables**

Farmers grow both summer and winter vegetables. Main vegetables are potato, brinjal, raddish, arum, lady's finger, cauliflower, cabbage, bean, tomato, patal, gourd, cucumber, pumpkin, knoll-kal-turnip, dhundal, barbati, khirai, chichinga, carrot, kakrol and sak.

### **Cash crop**

Main cash crops are jute, mesta, sunhemp, cotton, sugarcane and tobacco.

### **Spices**

The main spices include turmeric, ginger, chillies, onion, garlic, corriander, black cumin and ani seed.

### **Fuel crops**

Dhaincha and other smaller plants used as cooking-fuel are included in the group.

- Chapter sources: i) Banglapedia  
ii) Population census 2001- Community report Panchagarh  
iii) Population & Housing Census 2001 and 2011  
iv) Census of Agriculture 2008  
v) Economic Census 2001 & 2003  
vi) Bangladesh District Gazetteer, Dinajpur, 1975



## **CHAPTER 2**

# **General Information**



## General Information

### 2.01 Broad classification of area 2011

Upazila	Total area	Land area	(In sq. km.)	
			Reserve forest	Riverine area
Atwari	209.93	204.08	0	5.85
Boda	349.47	346.78	2.35	0.34
Debigonj	309.02	263.63	6.39	39
Panchagarh Sadar	347.09	337.05	5.72	4.32
Tentulia	189.10	178.41	8.206	2.484
<b>Total</b>	<b>1404.61</b>	<b>1169.99</b>	<b>22.666</b>	<b>51.994</b>

### 2.02 Number of municipality, union, mauza, mahalla and village 2011

Upazila	Municipality	Ward (PSA)	Mahalla	Union	Mauza	Village
Atwari	-	-	-	6	62	64
Boda	1	9	32	10	174	219
Debiganj	-	-	-	10	108	101
Panchagarh Sadar	1	9	32	10	83	195
Tentulia	-	-	-	7	36	246
<b>Total</b>	<b>2</b>	<b>18</b>	<b>64</b>	<b>43</b>	<b>463</b>	<b>825</b>

### 2.03 Number of household, population and density 2011

Upazila	Household	Population			Sex ratio (M/F)	Average size of household	Density per sq. km.
		Male	Female	Total			
Atwari	32045	66937	55813	133650	100	4.16	637
Boda	56102	116555	115569	232124	101	4.14	664
Debiganj	52411	113120	111589	224709	101	4.28	727
Panchagarh Sadar	60115	136850	134857	271707	101	4.49	783
Tentulia	27908	63463	61991	125454	102	4.48	663
<b>Total</b>	<b>228581</b>	<b>496925</b>	<b>479819</b>	<b>987644</b>	<b>101</b>	<b>4.31</b>	<b>703</b>

**2.04 Population and literacy rate of 1991, 2001 & 2011 and number of voter 2011**

Upazila	Population			Literacy rate (%)			Number of voter (000)		
	1991	2001	2011	1991	2001	2011	Male	Female	Total
Atwari	103906	114938	133650	37.8	50.7	59.8	77	77	154
Boda	168258	200693	232124	29.4	43.1	51.8	40	40	80
Debiganj	159902	185960	224709	24.8	41.1	47.7	68	69	137
Panchagarh Sadar	193198	229237	271707	34.7	45.7	53.2	60	63	123
Tentulia	86760	105368	125454	25.5	39.0	47.3	33	34	67
<b>Total</b>	<b>712024</b>	<b>836196</b>	<b>987644</b>	<b>30.6</b>	<b>43.9</b>	<b>51.8</b>	<b>278</b>	<b>283</b>	<b>561</b>

**2.05 Population by religion 2011**

Upazila	Muslim	Hindu	Buddhist	Christian	Others	Total
Atwari	99681	32281	4	1476	208	133650
Boda	177462	53989	2	399	272	232124
Debiganj	166053	57944	1	269	442	224709
Panchagarh Sadar	254612	16855	4	163	73	271707
Tentulia	122821	2335	10	206	82	125454
<b>Total</b>	<b>820629</b>	<b>163404</b>	<b>21</b>	<b>2513</b>	<b>1077</b>	<b>987644</b>

**2.06(a) Percentage distribution of population (10 years and above) by marital status 2011**

Upazila	Total		Unmarried (%)		Married (%)	
	Male	Female	Male	Female	Male	Female
Atwari	50979	51638	35.3	23.1	63.7	66.1
Boda	88798	88859	35.5	23.4	63.8	66.6
Debiganj	84527	84947	30.9	22.9	64.3	67.1
Panchagarh Sadar	103338	102633	38.6	26.1	60.7	64.2
Tentulia	47675	46910	36.1	23.0	63.3	67.7
<b>Total</b>	<b>375317</b>	<b>374987</b>	<b>36.2</b>	<b>23.9</b>	<b>63.0</b>	<b>66.2</b>



**2.06(b) Percentage distribution of population (10 years and above) by marital status 2011**

Upazila	Total		Widowed (%)		Divorced/separated (%)	
	Male	Female	Male	Female	Male	Female
Atwari	50979	51638	0.9	10.2	0.1	0.5
Boda	88798	88859	0.6	9.4	0.1	0.6
Debiganj	84527	84947	0.7	9.2	0.1	0.8
Panchagarh Sadar	103338	102633	0.6	8.9	0.2	0.8
Tentulia	47675	46910	0.5	8.4	0.2	0.8
<b>Total</b>	<b>375317</b>	<b>374987</b>	<b>0.6</b>	<b>9.2</b>	<b>0.1</b>	<b>0.7</b>

**2.07 Percentage distribution of population by type of disability 2011**

Upazila	Total population	All	Speech	Vision	Hearing	Physical	Mental	Autistic
Atwari	13650	1.4	0.2	0.2	0.2	0.6	0.22	0.1
Boda	232124	1.4	0.2	0.2	0.2	0.5	0.2	0.1
Debiganj	224709	1.3	0.2	0.2	0.2	0.5	0.2	0.1
Panchagarh Sadar	271707	2.0	0.2	0.3	0.2	0.9	0.2	0.1
Tentulia	125454	1.7	0.2	0.3	0.2	0.7	0.2	0.1
<b>Total</b>	<b>867644</b>	<b>1.6</b>	<b>0.2</b>	<b>0.3</b>	<b>0.2</b>	<b>0.7</b>	<b>0.2</b>	<b>0.1</b>

**2.08 Number of religious institution 2011**

Upazila	Mosque	Eid-Gah	Temple (Mandir)	Church (Girza)	Pagoda	Others
Atwari	269	48	275	9	0	0
Boda	450	123	75	2	0	0
Debiganj	462	112	198	1	0	0
Panchagarh Sadar	447	41	59	2	0	0
Tentulia	160	75	7	2	0	0
<b>Total</b>	<b>1788</b>	<b>399</b>	<b>614</b>	<b>16</b>	<b>0</b>	<b>0</b>

**2.09 Number of pond, dighee, flood camps/shelter, cyclone shelter, stadium/ playground, park/ amusement park 2011**

Upazila	Pond	Dighee	River flow	Flood camp/shelter	Cyclone shelter	Stadium/ playground	Park/ amusement park
Atwari	1445	100	2	0	0	0	0
Boda	2502	0	3	0	0	22	1
Debiganj	4858	0	10	0	0	27	1
Panchagarh Sadar	1878	2	4	0	0	1	1
Tentulia	1346	159	6	0	0	0	1
<b>Total</b>	<b>12029</b>	<b>261</b>	<b>25</b>	<b>0</b>	<b>0</b>	<b>50</b>	<b>4</b>

**2.10 Number of filling station, fire brigade station, police station/camp, union land (tohsil) office, BOP (BGB camp), cyber cafe 2011**

Upazila	Filling station	Fire brigade station	Police station/camp	Union land (tohsil) office	Sub-registry office	BOP (BGB camp)	ISP provider	Cyber cafe
Atwari	1	0	1	6	1	7	0	0
Boda	1	1	1	10	1	3	0	0
Debiganj	2	0	1	10	1	0	0	0
Panchagarh Sadar	4	1	2	10	2	10	0	0
Tentulia	1	1	1	7	1	10	0	0
<b>Total</b>	<b>9</b>	<b>3</b>	<b>6</b>	<b>43</b>	<b>6</b>	<b>30</b>	<b>0</b>	<b>0</b>

**2.11 Number of growth centre, hat /bazar, poultry farm, dairy farm, nursery, horticulture centre, brick kiln, decorator service 2011**

Upazila	Growth centre	Hat /bazar	Poultry farm	Dairy farm	Nursery	Horticulture centre	Brick kiln	Decorator service
Atwari	3	25	10	12	37	0	8	27
Boda	4	41	31	13	26	1	5	46
Debiganj	3	24	40	50	15	0	10	44
Panchagarh Sadar	5	44	36	55	12	0	0	37
Tentulia	3	19	29	23	5	0	0	19
<b>Total</b>	<b>18</b>	<b>153</b>	<b>146</b>	<b>153</b>	<b>95</b>	<b>1</b>	<b>23</b>	<b>173</b>

**2.12 Name of land/river port, important or historical/tourist places/objects, important/famous crop or food production 2011**

Upazila	Name of Land/ River/Sea port	Name of Important or historical/ tourist place/object	Name of important /famous crop or food production	Customer care service provider and cell phone operator	Distance between district head quarter & upazila by road (km)
Atwari	0	Alogua Mala	Rice	Grameen Phone, Robi. Banglalink, Teletalk & Airtel	24
Boda	0	Bolashri Mondir	Rice,Gom, Patato	Grameen Phone, Robi. Banglalink, Teletalk & Airtel	25
Debiganj	0	0	Rice, Wheat	Grameen Phone, Robi. Banglalink, Teletalk & Airtel	40
Panchagarh Sadar	0	0	0	Grameen Phone, Robi. Banglalink, Teletalk & Airtel	12
Tentulia	Bangla Banda Land Bandar, Tea Garden	0	Rice	Grameen Phone, Robi. Banglalink, Teletalk & Airtel	42

Chapter sources: i) Population and Housing Census 2011  
ii) Agriculture Census 2008  
iii) Upazila Statistical Office, BBS.



# **CHAPTER 3**

## **Meteorology**



## Meteorology

### 3.01 Temperature, rainfall, humidity during the year 2008-2011

Years	Temperature (centigrade)		Rainfall (millimeter)	Humidity (%)
	Maximum	Minimum		
2008	34.1	9.9	1787	77.0
2009	33.0	12.1	1994	74.0
2010	33.5	10.1	1453	60.3
2011	20.8	9.2	1632	75.8

### 3.02 Occurrence of storm during the year 2008-2011

Upazila	2008	2009	2010	2011
Atwari	0	0	0	0
Boda	0	0	0	0
Debiganj	0	0	0	0
Panchagarh Sadar	0	0	0	0
Tentulia	0	0	0	0
<b>Total</b>	<b>0</b>	<b>0</b>	<b>0</b>	<b>0</b>

### 3.03 Occurrence of river erosion during the year 2008-2011

Upazila	2008	2009	2010	2011
Atwari	0	0	0	0
Boda	0	0	0	0
Debiganj	0	0	0	0
Panchagarh Sadar	0	0	0	0
Tentulia	0	0	0	0
<b>Total</b>	<b>0</b>	<b>0</b>	<b>0</b>	<b>0</b>

Chapter source: Bangladesh Meteorological Department.





**CHAPTER 4**  
**Agriculture**  
**(Land Area in acres & Production in Metric Ton)**



## Agriculture

### 4.01 Number of agriculture holding by tenure

(According to Agriculture Census 2008)

Upazila	Total farm holding	Owner holding	Owner cum tenant	Tenant holding
Atwari	29472	18658	9015	1799
Boda	34128	19077	13386	1665
Debiganj	32913	14789	15335	2789
Panchagarh Sadar	34135	33482	14862	5834
Tentulia	15782	9876	5643	263
<b>Total</b>	<b>166473</b>	<b>95882</b>	<b>58241</b>	<b>12350</b>

### 4.02 Land area based on utilization 2008

Upazila	Operated area	Permanent cropped area	Temporary cropped area	Permanent fallow area	Others
Atwari	46914	919	40651	33	5244
Boda	68157	1353	57293	15343	9511
Debiganj	62223	1089	52393	1265	8741
Panchagarh Sadar	70540	2675	58636	110	9229
Tentulia	33657	599	28373	7415	4685
<b>Total</b>	<b>281493</b>	<b>6638</b>	<b>237350</b>	<b>24166</b>	<b>37416</b>

### 4.03 Land utilization (temporary cropped area) 2008

Upazila	Current fallow	Temporary cropped area					Productivity of crop
		Single	Double	Triple	Net	Gross	
Atwari	172	4092	26527	10126	40651	87424	215
Boda	250	8540	49984	8100	57293	66874	117
Debiganj	50	22325	26860	7770	52393	99361	190
Panchagarh Sadar	80	25455	35952	3858	58636	65345	111
Tentulia	340	1467	16596	2170	28373	54370	192
<b>Total</b>	<b>892</b>	<b>61879</b>	<b>155919</b>	<b>32024</b>	<b>237352</b>	<b>373374</b>	<b>157</b>

**4.04 Land area under irrigation for selected crops 2008**

Upazila	Paddy		Wheat		Potato	
	Total area	Irrigated area	Total area	Irrigated area	Total area	Irrigated area
Atwari	49313	17156	7491	8719	1720	2300
Boda	74341	32628	4921	6262	2410	1950
Debiganj	72516	34225	4039	6320	4573	2050
Panchagarh Sadar	63417	11650	6457	7360	1619	850
Tentulia	29665	8420	2704	0	828	0
<b>Total</b>	<b>289254</b>	<b>104079</b>	<b>25616</b>	<b>28661</b>	<b>11156</b>	<b>7150</b>

**4.05 Cropped area sprayed with plant protection measures 2008**

Upazila	Total farm holding		Spraying farm holding		Reporting area sprayed
	Number	Cropped area	Number	Cropped area	
Atwari	21887	41570	17230	36320	16300
Boda	34128	58646	5688	10250	3275
Debiganj	32913	53482	5112	11820	8215
Panchagarh Sadar	34135	61311	54000	65120	50310
Tentulia	15782	28972	15782	33435	33435
<b>Total</b>	<b>138847</b>	<b>243984</b>	<b>97812</b>	<b>156945</b>	<b>111535</b>

**4.06 Number of holding reporting cattle head 2008**

Upazila	Total holding	Number of holding based on cattle heads				
		1-3 head	4-6 head	7-9 head	10-15 head	15 head & above
Atwari	19959	10256	7685	1720	283	15
Boda	49833	22424	12957	7475	4485	2492
Debiganj	26670	12157	9375	4508	525	105
Panchagarh Sadar	47195	40000	3875	3100	200	20
Tentulia	14838	7642	4564	2632	0	0
<b>Total</b>	<b>158495</b>	<b>92479</b>	<b>38456</b>	<b>19435</b>	<b>5493</b>	<b>2632</b>

**4.07 Number of holding reporting selected livestock species 2008**

Upazila	Cow & buffalo		Goat		Sheep	
	Holding number	Number of animal	Holding number	Number of goat	Holding number	Number of sheep
Atwari	20226	59886	16235	48683	100	553
Boda	29836	85089	22590	67055	296	1430
Debiganj	29568	91307	23853	67181	1502	4545
Panchagarh Sadar	29209	86071	24646	68671	401	1196
Tentulia	15114	46051	10173	29249	106	644
<b>Total</b>	<b>123955</b>	<b>368407</b>	<b>97501</b>	<b>280844</b>	<b>2411</b>	<b>8375</b>

**4.08 Selected poultry/birds 2008**

Upazila	Hen and cock		Duck		Others	
	Holding reporting	Total number	Holding reporting	Total number	Holding reporting	Total number
Atwari	15484	104055	4601	17519	1353	9790
Boda	28477	196310	9155	44753	0	0
Debiganj	29667	196052	10148	55463	0	0
Panchagarh Sadar	30845	191544	5702	24357	140	1680
Tentulia	14511	113573	1449	7418	404	4355
<b>Total</b>	<b>118986</b>	<b>801537</b>	<b>31059</b>	<b>149515</b>	<b>1897</b>	<b>15825</b>

**4.09 Area of high, medium and low land 2008**

Upazila	High land	Medium land	Low land	Total land
Atwari	25935	21462	0	47397
Boda	5753	19410	1773	26936
Debiganj	17226	24402	30307	2285
Panchagarh Sadar	15720	10680	0	25800
Tentulia	8296	8739	4500	19430
<b>Total</b>	<b>72932</b>	<b>84696</b>	<b>36580</b>	<b>121848</b>

**4.10 Broad soil classification 2008**

Upazila	Total	Soil classification				
		Doash	Bele	Etel	Kankar	Others
Atwari	46814	21462	25935	0	0	0
Boda	68157	10096	0	0	0	0
Debiganj	62223	16363.75	38306.50	2284.75	0	0
Panchagarh Sadar	70540	10154	23690	0	0	0
Tentulia	33657	1900	4500	1212	0	0
<b>Total</b>	<b>281393</b>	<b>59975.75</b>	<b>92431.65</b>	<b>3496.75</b>	<b>0</b>	<b>0</b>

**4.11 Irrigation by means 2010-2011**

(In acre)

Upazila	Irrigation management						Total
	Power pump	Tube well	Doon	Swing basket	Canal	Others	
Atwari	1997	21201	0	0	0	0	35728
Boda	4605	0	0	0	0	0	0
Debiganj	6570	1570	900	0	0	0	2470
Panchagarh Sadar	2810	0	5	2	2	0	12009
Tentulia	1135	7310	198	0	0	0	7508
<b>Total</b>	<b>17119</b>	<b>30081</b>	<b>1103</b>	<b>2</b>	<b>2</b>	<b>0</b>	<b>57715</b>

**4.12 Number of low lift pump scheme 2010-11**

Upazila	Number of pumps fielded			Area irrigated (in acre)
	Electric	Diesel	Total	
Atwari	322	5230	5552	29061
Boda	505	7285	7790	1822
Debiganj	788	6720	7508	42595
Panchagarh Sadar	1118	3000	4118	12000
Tentulia	334	1385	1719	4960
<b>Total</b>	<b>3067</b>	<b>23620</b>	<b>26687</b>	<b>90438</b>

**4.13 Number of deep tube-well scheme 2010-11**

Upazila	Number of deep tube-well		Area irrigated (In acre)
	Commissioned	Operated	
Atwari	74	74	5767
Boda	115	115	5545
Debiganj	71	68	8360.95
Panchagarh Sadar	34	34	850
Tentulia	0	25	2350
<b>Total</b>	<b>294</b>	<b>316</b>	<b>22872.95</b>

**4.14 Number of selected agricultural machine 2008**

Upazila	Number of power tiller	Tractor	Number of threshing machine
Atwari	150	6	444
Boda	215	8	533
Debiganj	331	15	173
Panchagarh Sadar	159	17	126
Tentulia	48	19	71
<b>Total</b>	<b>905</b>	<b>68</b>	<b>1351</b>

**4.15 Use of chemical fertilizer 2010-11**

Upazila	UREA	TSP	MP	DAP	Others
Atwari	9547	6969	5145	0	609
Boda	14938	9173	6641	549	17564
Debiganj	9715	896	1308	94	25
Panchagarh Sadar	9378	2572	2550	643	2000
Tentulia	3300	280	270	25	85
<b>Total</b>	<b>46878</b>	<b>19890</b>	<b>15914</b>	<b>1311</b>	<b>20283</b>

**4.16 Distribution of chemical fertilizer 2010-11**

(In metric ton)

Upazila	UREA	TSP	MP	DAP	HP	NPK	SP	Others
Atwari	9547	6969	5145	0	0	0	0	550
Boda	12200	7500	4300	444	0	0	0	0
Debiganj	9715	896	1308	94	0	0	0	25
Panchagarh Sadar	9378	2572	2550	643	0	0	0	2000
Tentulia	3300	280	270	25	0	0	0	85
<b>Total</b>	<b>44140</b>	<b>18217</b>	<b>13573</b>	<b>1206</b>	<b>0</b>	<b>0</b>	<b>0</b>	<b>2660</b>

**4.17 Area and production of rice crops 2010-11**

(Area in acre and production in metric ton)

Upazila	Aus		Aman		Boro	
	Area	Production	Area	Production	Area	Production
Atwari	4	1.8	33680	32927	15526	25409
Boda	0	0	20800	51850	15550	65690
Debiganj	0	0	47935	44259	38740	60872
Panchagarh Sadar	0	0	23650	59054	5200	20735
Tentulia	0	0	23530	14409	9930	18300
<b>Total</b>	<b>4</b>	<b>1.8</b>	<b>149595</b>	<b>202499</b>	<b>84946</b>	<b>191006</b>

**4.18 Area and production of rice crops 2009-2010**

(Area in acre and production in metric ton)

Upazila	Aus		Aman		Boro	
	Area	Production	Area	Production	Area	Production
Atwari	0	0	34380	33750	16184	24125
Boda	0	0	51400	51400	36450	37690
Debiganj	0	0	48850	40018	38000	55729
Panchagarh Sadar	0	0	23635	59010	5150	20700
Tentulia	0	0	21447	14991	9784	17042
<b>Total</b>	<b>0</b>	<b>0</b>	<b>179712</b>	<b>199169</b>	<b>105568</b>	<b>155286</b>



**4.19 Area and production of wheat, jute and sugarcane 2010-11**

(Area in acre and production in metric ton)

Upazila	Wheat		Jute		Sugarcane	
	Area	Production	Area	Production	Area	Production
Atwari	9653	6911	3752	2570	2210	26.85
Boda	6190	8251	4950	3524	2210	22100
Debiganj	7900	4740	6900	5623	53	656
Panchagarh Sadar	15104	21525	4190	2542	2936	27440
Tentulia	3795	4269	2473	15456	4370	26897
<b>Total</b>	<b>42642</b>	<b>45696</b>	<b>22265</b>	<b>29715</b>	<b>11779</b>	<b>77119.85</b>

**4.20 Area and production of wheat, jute and sugarcane 2009-10**

(Area in acre and production in metric ton)

Upazila	Wheat		Jute		Sugarcane	
	Area	Production	Area	Production	Area	Production
Atwari	9653	6911	3752	2570	2210	26.85
Boda	6190	8251	4950	3524	2210	22100
Debiganj	7900	4740	6900	5623	53	656
Panchagarh Sadar	15104	21525	4190	2542	2936	27440
Tentulia	3795	4269	2473	15456	4370	26897
<b>Total</b>	<b>42642</b>	<b>45696</b>	<b>22265</b>	<b>29715</b>	<b>11779</b>	<b>77119.85</b>

**4.21 Area and production of lentil (masur), mug and maize crops 2010-11**

(Area in acre and production in metric ton)

Upazila	Lentil (Masur)		Mug		Maize	
	Area	Production	Area	Production	Area	Production
Atwari	6.3	1.41	16.4	5.76	1382	3095
Boda	155	31	10	2	952	1904
Debiganj	42	18.7	0	0	1640	2980
Panchagarh Sadar	19	5	80	13	1229	3578
Tentulia	35	13	22	6	773	2021
<b>Total</b>	<b>257.3</b>	<b>69.11</b>	<b>128.4</b>	<b>26.76</b>	<b>5976</b>	<b>13578</b>

**4.22 Area and production of lentil (masur), mug and maize crops 2009-10**

(Area in acre and production in metric ton)

Upazila	Lentil (Masur)		Mug		Maize	
	Area	Production	Area	Production	Area	Production
Atwari	6.3	1.45	15.8	5.54	1380	3049
Boda	180	36	51	10	500	750
Debiganj	67	29.88	0	0	1586	3005
Panchagarh Sadar	32	8	60	11	968	2754
Tentulia	0	0	0	0	690	1715
<b>Total</b>	<b>285.3</b>	<b>75.33</b>	<b>126.8</b>	<b>26.54</b>	<b>5124</b>	<b>11273</b>

**4.23 Area and production of pulse by type 2010-11**

(Area in acre and production in metric ton)

Upazila	Gram		Motor		Khesari		Mash-kalai	
	Area	Production	Area	Production	Area	Production	Area	Production
Atwari	5.8	1.28	4.6	1.44	5.5	1.55	22.9	6.6
Boda	11	2.2	11	2.2	29	5.8	73	18.25
Debiganj	10	3.96	0	0	4.5	1.575	45	19.54
Panchagarh Sadar	35	9	22	7	0	0	26	7
Tentulia	25	6	0	0	0	0	9	3
<b>Total</b>	<b>86.8</b>	<b>22.44</b>	<b>37.6</b>	<b>10.64</b>	<b>39</b>	<b>8.925</b>	<b>175.9</b>	<b>54.39</b>

**4.24 Area and production of potato by type 2010-11**

(Area in acre and production in metric ton)

Upazila	Potato		Sweet potato		Total potato	
	Area	Production	Area	Production	Area	Production
Atwari	2223	8074	114	69.18	2337	8188
Boda	3275	19650	210	546	3485	20196
Debiganj	9985	53237	60	231	10045	53297
Panchagarh Sadar	2677	6818	176	399	2853	7217
Tentulia	1514	7814	0	0	1514	7814
<b>Total</b>	<b>19674</b>	<b>95593</b>	<b>560</b>	<b>1245.18</b>	<b>20234</b>	<b>96712</b>

## 4.25 Area and production of potato by type 2009-10

(Area in acre and production in metric ton)

Upazila	Potato		Sweet potato		Total potato	
	Area	Production	Area	Production	Area	Production
Atwari	2161	12906	115	69	2274	12974
Boda	2260	14238	225	630	2485	14868
Debiganj	10810	69072	90	346	10900	69418
Panchagarh Sadar	1782	4185	157	319	1939	4504
Tentulia	1250	6965	0	0	1250	6965
<b>Total</b>	<b>18263</b>	<b>107366</b>	<b>587</b>	<b>1364</b>	<b>18848</b>	<b>108729</b>

## 4.26 Area and production of oil seed by type 2010-11

(Area in acre and production in metric ton)

Upazila	Rape & mustard		Ground nut		Til	
	Area	Production	Area	Production	Area	Production
Atwari	137	38.8	0	0	0	0
Boda	207	49.68	1430	850	457	91.04
Debiganj	240	79.4	5220	3437	0	0
Panchagarh Sadar	284	102	133	50	4265	1285
Tentulia	289	244	82	69	1125	534
<b>Total</b>	<b>1157</b>	<b>513.88</b>	<b>6865</b>	<b>4406</b>	<b>5847</b>	<b>1910.04</b>

## 4.27 Area and production of oil seed by type 2009-10

(Area in acre and production in metric ton)

Upazila	Rape & mustard		Ground nut		Til	
	Area	Production	Area	Production	Area	Production
Atwari	137	38.8	0	0	0	0
Boda	207	49.68	1390	889	570	130
Debiganj	480	138	5302	3503	0	0
Panchagarh Sadar	320	112	113	42	4240	1260
Tentulia	293	239	75	61	1105	458
<b>Total</b>	<b>1437</b>	<b>577.48</b>	<b>6880</b>	<b>4495</b>	<b>5915</b>	<b>1848</b>

**4.28 Area and production of pepper, onion and garlic 2010-11**

(Area in acre and production in metric ton)

Upazila	Pepper		Onion		Garlic	
	Area	Production	Area	Production	Area	Production
Atwari	140.9	48	133.1	191	96	12496
Boda	583	350	181	253	154	184
Debiganj	820	503	1336	3777	418	1608
Panchagarh Sadar	744	225	700	1033	189	123
Tentulia	420	422	432	840	270	485
<b>Total</b>	<b>2707.9</b>	<b>1548</b>	<b>2782.1</b>	<b>6094</b>	<b>1127</b>	<b>14896</b>

**4.29 Area and production of pepper, onion and garlic 2009-10**

(Area in acre and production in metric ton)

Upazila	Pepper		Onion		Garlic	
	Area	Production	Area	Production	Area	Production
Atwari	141.1	50.84	133	189	96	122.85
Boda	458	252	175	245	154	184
Debiganj	899	602	1327	3756	430	1665
Panchagarh Sadar	719	218	645	949	170	111
Tentulia	400	401	412	748	260	438
<b>Total</b>	<b>2617.1</b>	<b>1523.84</b>	<b>2692</b>	<b>5887</b>	<b>1110</b>	<b>2520.85</b>

**4.30 Area and production of turmeric and ginger 2010-11**

(Area in acre and production in metric ton)

Upazila	Turmeric		Ginger	
	Area	Production	Area	Production
Atwari	73	84	9	12
Boda	315	535	138	4
Debiganj	945	6283	725	4023
Panchagarh Sadar	132	139	54	128
Tentulia	170	547	112	339
<b>Total</b>	<b>1635</b>	<b>7588</b>	<b>1038</b>	<b>4506</b>

## 4.31 Area and production of turmeric and ginger 2009-10

(Area in acre and production in metric ton)

Upazila	Turmeric		Ginger	
	Area	Production	Area	Production
Atwari	72	83	9	12
Boda	300	510	146	3
Debiganj	985	6576	810	4600
Panchagarh Sadar	126	132	46	109
Tentulia	160	500	105	311
<b>Total</b>	<b>1643</b>	<b>7801</b>	<b>1116</b>	<b>5035</b>

## 4.32 Area and production of tomato, radish and bean 2010-11

(Area in acre and production in metric ton)

Upazila	Tomato		Radish		Bean	
	Area	Production	Area	Production	Area	Production
Atwari	24.5	54	98.2	231	5.05	10
Boda	380	8	400	12	85	1
Debiganj	157	885	294	1374	41	164
Panchagarh Sadar	187	298	332	1339	87	120
Tentulia	240	716	230	831	155	315
<b>Total</b>	<b>988.5</b>	<b>1961</b>	<b>1354.2</b>	<b>3787</b>	<b>373.05</b>	<b>610</b>

## 4.33 Area and production of tomato, radish and bean 2009-10

(Area in acre and production in metric ton)

Upazila	Tomato		Radish		Bean	
	Area	Production	Area	Production	Area	Production
Atwari	24.3	53.5	97.3	2259	5.05	9.31
Boda	310	6.82	347	1041	73	87.06
Debiganj	198	1125	323	1506	56	226
Panchagarh Sadar	168	268	301	1289	76	105
Tentulia	220	634	210	675	145	279
<b>Total</b>	<b>920.3</b>	<b>2087.32</b>	<b>1278.3</b>	<b>6770</b>	<b>355.05</b>	<b>706.37</b>

**4.34 Area and production of pumpkin, parble (potol) and cabbage 2010-11**

(Area in acre and production in metric ton)

Upazila	Pumpkin		Parble (potol)		Cabbage	
	Area	Production	Area	Production	Area	Production
Atwari	35.6	91	5.5	6	46.8	28
Boda	130	3	48	86	190	7
Debiganj	120	650	35	43	185	896
Panchagarh Sadar	76	96	91	75	201	354
Tentulia	88	210	0	0	205	1401
<b>Total</b>	<b>449.6</b>	<b>1050</b>	<b>179.5</b>	<b>210</b>	<b>827.8</b>	<b>2686</b>

**4.35 Area and production of pumpkin, parble (potol) and cabbage 2009-10**

(Area in acre and production in metric ton)

Upazila	Pumpkin		Parble (potol)		Cabbage	
	Area	Production	Area	Production	Area	Production
Atwari	35.6	90.8	5.5	4.53	46.7	27.21
Boda	104	183	47	84.06	190	6.65
Debiganj	128	703	45	56	245	1206
Panchagarh Sadar	60	69	80	65	182	321
Tentulia	80	186	0	0	185	1244
<b>Total</b>	<b>407.6</b>	<b>1231.8</b>	<b>177.5</b>	<b>209.59</b>	<b>848.7</b>	<b>2804.86</b>

**4.36 Area and production of brinjal, lady's finger and arum 2010-11**

(Area in acre and production in metric ton)

Upazila	Brinjal		Lady's finger		Arum	
	Area	Production	Area	Production	Area	Production
Atwari	73.3	85.14	21.2	7.87	5.67	13.53
Boda	638	10.33	135	1.7	1972	39.44
Debiganj	465	2341.6	55	100	130	297
Panchagarh Sadar	162	218	349	199	54	36
Tentulia	345	618	84	144	40	89
<b>Total</b>	<b>1683.3</b>	<b>3273.07</b>	<b>644.2</b>	<b>452.57</b>	<b>2201.7</b>	<b>474.97</b>

## 4.37 Area and production of brinjal, lady's finger and arum 2009-10

(Area in acre and production in metric ton)

Upazila	Brinjal		Lady's finger		Arum	
	Area	Production	Area	Production	Area	Production
Atwari	72.8	84.9	20.6	5.51	5.65	13.66
Boda	550	8.91	114	1.42	2088	41.76
Debiganj	593	3167.42	59	99.44	151	331
Panchagarh Sadar	142	191	327	184	43	28
Tentulia	330	556	77	130	28	61
<b>Total</b>	<b>1687.8</b>	<b>4008.23</b>	<b>597.6</b>	<b>420.37</b>	<b>2315.65</b>	<b>475.42</b>

## 4.38 Area and production of cauliflower and cucumber 2010-11

(Area in acre and production in metric ton)

Upazila	Cauliflower		Cucumber	
	Area	Production	Area	Production
Atwari	40.2	22.8	7.9	6.72
Boda	180	3.6	32	9.06
Debiganj	261	1190	39	61
Panchagarh Sadar	232	466	79	37
Tentulia	160	484	90	217
<b>Total</b>	<b>873.2</b>	<b>2166.4</b>	<b>247.9</b>	<b>330.78</b>

## 4.39 Area and production of cauliflower and cucumber 2009-10

(Area in acre and production in metric ton)

Upazila	Cauliflower		Cucumber	
	Area	Production	Area	Production
Atwari	40.1	22.8	7.8	6.63
Boda	185	1.7	42	12.06
Debiganj	385	1755	48	76
Panchagarh Sadar	210	386	79	31
Tentulia	152	439	82	190
<b>Total</b>	<b>972.1</b>	<b>2604.5</b>	<b>258.8</b>	<b>315.69</b>

**4.40 Area and production of papaya, guava, lime and lemon 2010-11**

(Area in acre and production in metric ton)

Upazila	Papaya		Guava		Lime and lemon	
	Area	Production	Area	Production	Area	Production
Atwari	1.38	357	2.36	190.1	0.18	8750
Boda	40	40	15	7.09	4	84
Debiganj	15	85	20	205	12	6
Panchagarh Sadar	19	669	46	447	30	212
Tentulia	5	76	3	37	4	120
<b>Total</b>	<b>80.38</b>	<b>1227</b>	<b>86.36</b>	<b>886.19</b>	<b>50.18</b>	<b>9172</b>

**4.41 Area and production of papaya, guava, lime and lemon 2009-10**

(Area in acre and production in metric ton)

Upazila	Papaya		Guava		Lime and lemon	
	Area	Production	Area	Production	Area	Production
Atwari	1.35	352	2.36	191.54	0.17	86.76
Boda	40	40	15	7.09	4	84
Debiganj	14	71.82	15	183	10	5
Panchagarh Sadar	19	561	46	447	29	187
Tentulia	5	71	3	33	3	70
<b>Total</b>	<b>79.35</b>	<b>1095.82</b>	<b>81.36</b>	<b>861.63</b>	<b>46.17</b>	<b>432.76</b>

**4.42 Area and production of jackfruit, banana and pineapple 2010-11**

(Area in acre and production in metric ton)

Upazila	Jackfruits		Banana		Pineapple	
	Area	Production	Area	Production	Area	Production
Atwari	9.5	893	6.6	298	0	0
Boda	54	571	92	1930	2	40
Debiganj	22	1568	25	498	4	45
Panchagarh Sadar	314	21989	178	618	96	237
Tentulia	5	2382	140	702	21	1200
<b>Total</b>	<b>404.5</b>	<b>27403</b>	<b>441.6</b>	<b>4046</b>	<b>123</b>	<b>1522</b>



**4.43 Area and production of jackfruit, banana and pineapple 2009-10**

(Area in acre and production in metric ton)

Upazila	Jackfruit		Banana		Pineapple	
	Area	Production	Area	Production	Area	Production
Atwari	9.5	893	6.6	298	0	0
Boda	54	571	92	1930	2	40
Debiganj	22	1568	25	498	4	45
Panchagarh Sadar	314	21989	178	618	96	237
Tentulia	5	2382	140	702	21	1200
<b>Total</b>	<b>404.5</b>	<b>27403</b>	<b>441.6</b>	<b>4046</b>	<b>123</b>	<b>1522</b>

**4.44 Area and production of mango, litchi and blackberry 2010-11**

(Area in acre and production in metric ton)

Upazila	Mango		Litchi		Blackberry	
	Area	Production	Area	Production	Area	Production
Panchagarh Sadar	293	3554	103	905	2	50
Atwari	15.20	297	2.29	48.18	0	40
Boda	246	2328	30	115	2	28
Debiganj	50	2420	11	298	4	32
Tentulia	8	309	10	39	2	16
<b>Total</b>	<b>612.2</b>	<b>8908</b>	<b>156.29</b>	<b>1405.18</b>	<b>10</b>	<b>166</b>

**4.45 Area and production of mango, litchi and blackberry 2009-10**

(Area in acre and production in metric ton)

Upazila	Mango		Litchi		Blackberry	
	Area	Production	Area	Production	Area	Production
Atwari	15.2	295	2.22	67.64	0	42
Boda	246	1450	30	115	2	28
Debiganj	45	2310	9	274	4	32
Panchagarh Sadar	293	3554	104	939	2	50
Tentulia	7	263	9	35	2	15
<b>Total</b>	<b>606.2</b>	<b>7872</b>	<b>154.22</b>	<b>1430.64</b>	<b>10</b>	<b>167</b>

**4.46 Area and production at water melon/melon (bangi) in following years**

(Area in acre and production in metric ton)

Upazila	2010-11		2009-10	
	Area	Production	Area	Production
Atwari	64	798	68	837
Boda	120	288	133	319
Debiganj	0	0	25	1125
Panchagarh Sadar	1052	1123	1037	1097
Tentulia	178	1461	160	1282
<b>Total</b>	<b>1414</b>	<b>3670</b>	<b>1423</b>	<b>4660</b>

**4.47 Area and production at tobacco in following years**

(Area in acre and production in metric ton)

Upazila	2010-11		2009-10	
	Area	Production	Area	Production
Atwari	0	0	0	0
Boda	5	1	5	1
Debiganj	15	3	30	5.34
Panchagarh Sadar	0	0	0	0
Tentulia	0	0	0	0
<b>Total</b>	<b>20</b>	<b>4</b>	<b>35</b>	<b>6.34</b>

**4.48 Cotton and Sericulture cultivation for the year 2010-11**

(Area in acre and production in metric ton)

Upazila	All cotton		Sericulture	
	Area	Production	Area	Production
Atwari	0	0	0	0
Boda	0	0	0	0
Debiganj	5	125	0	0
Panchagarh Sadar	0	0	0	0
Tentulia	0	0	0	0
<b>Total</b>	<b>5</b>	<b>125</b>	<b>0</b>	<b>0</b>

**4.49 Number and area of pond, dighee and other area 2010-2011**

(Area in Acre)

Upazila	Pond		Dighee		Other area	Total area
	Number	Area	Number	Area		
Atwari	1445	500	100	100	8	400
Boda	2502	1353	0	0	37	2003
Debiganj	4858	1779	0	0	0	1779
Panchagarh Sadar	1589	909.53	5	55	0	964.53
Tentulia	350	5	30	12	0	17
<b>Total</b>	<b>10744</b>	<b>4546.53</b>	<b>135</b>	<b>167</b>	<b>45</b>	<b>5163.53</b>

**4.50 Number of fisherman and production of fish in following years**

(Production in metric ton)

Upazila	2010-11		2009-10	
	Number	Production	Number	Production
Atwari	2600	2018.8	2000	1821.7
Boda	505	7.5	500	5
Debiganj	4010	3110	4010	3195
Panchagarh Sadar	475	1362	500	1355
Tentulia	14	496	14	450
<b>Total</b>	<b>7604</b>	<b>6994.3</b>	<b>7024</b>	<b>6826.7</b>

Chapter sources: i) Agriculture Census 2008  
 ii) Agriculture Wing, BBS  
 iii) Yearbook of Agricultural Statistics of Bangladesh 2011  
 iv) Upazila Statistical Office, BBS



# **CHAPTER 5**

## **Industry**



## Industry

### 5.01 Number of selected industry 2011

Upazila	Textile mill	Garments factory	Rice mill	Match factory	Steel and engineering	Aluminium	Jute mill	Sugar mill	Others
Atwari	0	0	0	0	0	0	0	0	0
Boda	0	0	127	0	0	0	1	0	0
Debiganj	0	0	84	0	0	0	0	0	0
Panchagarh Sadar	0	0	0	0	0	0	0	1	0
Tentulia	0	0	37	0	0	0	0	0	0
<b>Total</b>	<b>0</b>	<b>0</b>	<b>248</b>	<b>0</b>	<b>0</b>	<b>0</b>	<b>1</b>	<b>1</b>	<b>0</b>

### 5.02 Number of jute mill and number of worker 2011

Upazila	Number of mill	Number of loom (installed)	Number of loom		Number of worker		
			Operative	Non-operational	Permanent	Temporary	Total
Atwari	0	0	0	0	0	0	0
Boda	12	295	195	100	121	2000	2121
Debiganj	0	0	0	0	0	0	0
Panchagarh Sadar	0	0	0	0	0	0	0
Tentulia	0	0	0	0	0	0	0
<b>Total</b>	<b>12</b>	<b>295</b>	<b>195</b>	<b>100</b>	<b>121</b>	<b>2000</b>	<b>2121</b>

### 5.03 Number of handloom establishment and loom 2011

Upazila	Number of unit (factory)	Number of loom		
		Operational	Non-operational	Total
Atwari	0	0	0	0
Boda	33	23	10	33
Debiganj	0	0	0	0
Panchagarh Sadar	0	0	0	0
Tentulia	0	0	0	0
<b>Total</b>	<b>33</b>	<b>23</b>	<b>10</b>	<b>33</b>

**5.04 Employment status in handloom industry 2011**

Upazila	Number of handloom	Person engaged			Total
		Family member	Regular	Hired /Casual	
Atwari	0	0	0	0	0
Boda	23	69	13	12	94
Debiganj	12	24	5	0	29
Panchagarh Sadar	0	0	0	0	0
Tentulia	0	0	0	0	0
<b>Total</b>	<b>35</b>	<b>93</b>	<b>18</b>	<b>12</b>	<b>123</b>

**5.05 Dying facilities of handloom industry 2011**

Upazila	With dying facility	Without dying facility	Total
Atwari	0	0	0
Boda	2	21	23
Debiganj	0	0	0
Panchagarh Sadar	0	0	0
Tentulia	0	0	0
<b>Total</b>	<b>2</b>	<b>21</b>	<b>23</b>

**5.06 Number of small scale and cottage industry 2011**

Upazila	Small scale and cottage industry								
	Weaving/ handloom	Handy	Husking crafts mill	Goor processing	Biri factory	Salt processing	Dry fish processing	Pottery	Others
Atwari	0	0	444	0	0	0	0	0	0
Boda	23	0	85	0	0	0	0	32	0
Debiganj	0	12	0	84	0	0	0	22	68
Panchagarh Sadar	0	0	0	0	0	0	0	43	0
Tentulia	0	7	37	0	0	0	0	3	0
<b>Total</b>	<b>23</b>	<b>19</b>	<b>566</b>	<b>84</b>	<b>0</b>	<b>0</b>	<b>0</b>	<b>100</b>	<b>68</b>



**5.07 Number of establishment and person engaged in cottage industry 2011**

Upazila	Number of unit	Person engaged		
		Family	Hired	Total
Atwari	117	210	148	358
Boda	157	393	0	393
Debiganj	259	0	0	259
Panchagarh Sadar	75	225	0	225
Tentulia	10	12	50	62
<b>Total</b>	<b>618</b>	<b>840</b>	<b>198</b>	<b>1297</b>

**5.08 Number of bamboo and cane industry and person engaged 2011**

Upazila	Unit	Person engaged		
		Family	Hired	Total
Atwari	107	188	156	344
Boda	214	535	50	585
Debiganj	117	242	0	242
Panchagarh Sadar	32	70	0	70
Tentulia	7	14	7	21
<b>Total</b>	<b>477</b>	<b>1049</b>	<b>213</b>	<b>1262</b>

**5.09 Number of wooden furniture and person engaged 2011**

Upazila	Unit	Person engaged		
		Family	Hired	Total
Atwari	32	52	120	172
Boda	100	200	300	500
Debiganj	82	105	305	410
Panchagarh Sadar	65	65	130	195
Tentulia	25	25	60	85
<b>Total</b>	<b>304</b>	<b>447</b>	<b>915</b>	<b>1362</b>

**5.10 Number of sawmill and person engaged 2011**

Upazila	Unit	Person engaged		
		Family	Hired	Total
Atwari	22	34	156	190
Boda	22	30	77	107
Debiganj	35	5	105	110
Panchagarh Sadar	20	20	75	95
Tentulia	14	14	42	56
<b>Total</b>	<b>113</b>	<b>103</b>	<b>455</b>	<b>558</b>

**5.11 Number of auto rice mill and person engaged 2011**

Upazila	Unit	Person engaged		
		Male	Female	Total
Atwari	2	10	80	90
Boda	0	0	0	0
Debiganj	0	0	0	0
Panchagarh Sadar	0	0	0	0
Tentulia	0	0	0	0
<b>Total</b>	<b>2</b>	<b>10</b>	<b>80</b>	<b>90</b>

**5.12 Number of rice mill and person engaged 2011**

Upazila	Unit	Person engaged		
		Male	Female	Total
Atwari	70	360	450	810
Boda	104	500	200	700
Debiganj	84	252	168	420
Panchagarh Sadar	35	120	160	280
Tentulia	14	14	42	56
<b>Total</b>	<b>307</b>	<b>1246</b>	<b>1020</b>	<b>2266</b>

**5.13 Number of oil mill and person engaged 2011**

Upazila	Unit	Person engaged		
		Family	Hired	Total
Atwari	2	4	4	8
Boda	3	6	6	12
Debiganj	0	0	0	0
Panchagarh Sadar	2	2	6	8
Tentulia	0	0	0	0
<b>Total</b>	<b>7</b>	<b>12</b>	<b>16</b>	<b>28</b>

**5.14 Number of bakery and person engaged 2011**

Upazila	Unit	Person engaged		
		Family	Hired	Total
Atwari	5	7	20	27
Boda	4	12	26	38
Debiganj	4	7	26	33
Panchagarh Sadar	8	16	48	64
Tentulia	5	5	25	30
<b>Total</b>	<b>26</b>	<b>47</b>	<b>145</b>	<b>192</b>

**5.15 Number of pottery and person engaged 2011**

Upazila	Unit	Person engaged		
		Family	Hired	Total
Atwari	0	0	0	0
Boda	32	96	0	96
Debiganj	40	95	0	95
Panchagarh Sadar	43	129	0	129
Tentulia	3	10	0	10
<b>Total</b>	<b>118</b>	<b>330</b>	<b>0</b>	<b>330</b>

**5.16 Number of printing press and person engaged 2011**

Upazila	Unit	Person engaged		
		Family	Hired	Total
Atwari	0	0	0	0
Boda	1	2	1	3
Debiganj	1	2	2	4
Panchagarh Sadar	3	3	6	9
Tentulia	0	0	0	0
<b>Total</b>	<b>5</b>	<b>7</b>	<b>9</b>	<b>16</b>

**5.17 Number of tailoring shop and person engaged 2011**

Upazila	Unit	Person engaged		
		Family	Hired	Total
Atwari	65	110	195	305
Boda	289	300	400	700
Debiganj	278	302	398	700
Panchagarh Sadar	350	355	1050	1405
Tentulia	59	59	100	159
<b>Total</b>	<b>1041</b>	<b>1126</b>	<b>2143</b>	<b>3269</b>

**5.18 Number of garments factory (for local use) and person engaged 2011**

Upazila	Unit	Person engaged		
		Male	Female	Total
Atwari	0	0	0	0
Boda	0	0	0	0
Debiganj	0	0	0	0
Panchagarh Sadar	1	18	7	25
Tentulia	5	250	150	400
<b>Total</b>	<b>6</b>	<b>268</b>	<b>157</b>	<b>425</b>

**5.19 Number of cold storage and capacity in following years**

Upazila	2010-11		2009-10	
	Number	Installed capacity	Number	Installed capacity
Atwari	0	0	0	0
Boda	1	7500	0	0
Debiganj	2	10010	1	4930
Panchagarh Sadar	0	0	0	0
Tentulia	0	0	0	0
<b>Total</b>	<b>3</b>	<b>17510</b>	<b>1</b>	<b>4930</b>

**5.20 Number of flour mill and person engaged 2011**

Upazila	Unit	Person engaged		
		Family	Hired	Total
Atwari	0	0	0	0
Boda	1	7500	0	0
Debiganj	2	10010	1	4930
Panchagarh Sadar	0	0	0	0
Tentulia	0	0	0	0
<b>Total</b>	<b>3</b>	<b>17510</b>	<b>1</b>	<b>4930</b>

Chapter sources: i) Industry and Labour Wing, BBS  
 ii) Agriculture Wing, BBS  
 iii) Upazila Statistical Office, BBS



# **CHAPTER 6**

## **Education**





## Education

### 6.01 Literacy (7+) rate of 2001 & 2011

Upazila	2001			2011		
	Male	Female	Both	Male	Female	Both
Atwari	59.6	41.4	50.7	65.7	65.7	59.8
Boda	48.9	36.9	43.1	55.0	48.6	51.0
Debiganj	47.7	34.3	41.1	51.1	44.3	47.7
Panchagarh Sadar	51.0	40.0	45.7	56.2	50.2	53.2
Tentulia	44.1	33.5	39.0	49.9	44.7	47.3
<b>Total</b>	<b>50.1</b>	<b>37.3</b>	<b>43.9</b>	<b>55.2</b>	<b>48.3</b>	<b>51.8</b>

### 6.02 Number of Government primary school (class I-V), teacher and student 2011

Upazila	Number of Government primary school	Number of teacher			Number of student			Students per teacher
		Male	Female	Total	Male	Female	Total	
Atwari	51	51	196	247	4786	3421	8207	33
Boda	71	118	224	342	7376	9016	16392	47
Debiganj	72	133	149	282	9690	9830	19380	68
Panchagarh Sadar	77	135	297	432	9234	9432	18666	43
Tentulia	39	83	126	209	5629	5410	11039	52
<b>Total</b>	<b>310</b>	<b>520</b>	<b>992</b>	<b>1512</b>	<b>36715</b>	<b>37109</b>	<b>73684</b>	<b>48</b>

### 6.03 Number of registered primary school (class I-V), teacher and student 2011

Upazila	Number of registered primary school	Number of teacher			Number of student			Students per teacher
		Male	Female	Total	Male	Female	Total	
Atwari	57	126	68	194	3193	3837	7030	36
Boda	93	200	148	348	6165	7238	13403	38
Debiganj	50	113	48	161	4479	4620	9099	56
Panchagarh Sadar	80	191	104	295	7206	7124	14330	48
Tentulia	33	66	54	120	2927	2813	5740	47
<b>Total</b>	<b>313</b>	<b>696</b>	<b>422</b>	<b>1118</b>	<b>23970</b>	<b>25632</b>	<b>49602</b>	<b>44</b>

**6.04 Number of private (non-registered) primary school (class I-V), teacher and student 2011**

Upazila	Number of Non-govt. primary school	Number of teacher			Number of student			Students per teacher
		Male	Female	Total	Male	Female	Total	
Atwari	3	5	7	12	122	187	309	25
Boda	2	1	7	8	109	117	226	28
Debiganj	11	33	11	44	1407	1470	2877	65
Panchagarh Sadar	7	9	19	28	532	516	1048	37
Tentulia	0	0	0	0	0	0	0	0
<b>Total</b>	<b>23</b>	<b>48</b>	<b>44</b>	<b>92</b>	<b>2170</b>	<b>2290</b>	<b>4460</b>	<b>48</b>

**6.05 Number of kindergarten school (pre schooling), teacher and student 2011**

Upazila	Number of kindergarten school	Number of teacher			Number of student			Students per teacher
		Male	Female	Total	Male	Female	Total	
Atwari	4	4	14	18	180	197	377	21
Boda	15	16	29	45	684	802	1486	33
Debiganj	18	60	22	82	1291	1306	2597	32
Panchagarh Sadar	26	60	108	168	1906	1718	3624	22
Tentulia	2	6	4	10	100	75	175	18
<b>Total</b>	<b>65</b>	<b>146</b>	<b>177</b>	<b>323</b>	<b>4161</b>	<b>4098</b>	<b>8259</b>	<b>25</b>

**6.06 Number of NGO school, teacher and student 2011**

Upazila	Number of NGO school	Number of teacher			Number of student			Students per teacher
		Male	Female	Total	Male	Female	Total	
Atwari	2	7	6	13	546	506	1052	80
Boda	5	5	15	20	345	402	747	37
Debiganj	18	0	18	18	250	270	540	30
Panchagarh Sadar	37	7	38	45	702	720	1422	31
Tentulia	17	0	17	17	186	304	490	29
<b>Total</b>	<b>79</b>	<b>19</b>	<b>94</b>	<b>113</b>	<b>2029</b>	<b>2202</b>	<b>4251</b>	<b>37</b>

**6.07 Number of Government secondary school, teacher and student 2011**

Upazila	Number of school	Number of teacher			Number of student			Students per teacher
		Male	Female	Total	Male	Female	Total	
Atwari	0	0	0	0	0	0	0	0
Boda	0	0	0	0	0	0	0	0
Debiganj	2	13	2	15	475	441	916	61
Panchagarh Sadar	2	65	18	83	2026	1002	2028	24
Tentulia	0	0	0	0	0	0	0	0
<b>Total</b>	<b>4</b>	<b>78</b>	<b>20</b>	<b>98</b>	<b>2501</b>	<b>1443</b>	<b>2944</b>	<b>30</b>

**6.08 Number of Non-government secondary school, teacher and student 2011**

Upazila	Number of school	Number of teacher			Number of student			Students per teacher
		Male	Female	Total	Male	Female	Total	
Atwari	43	437	79	516	9419	4809	14228	28
Boda	81	682	241	923	6584	10141	16725	18
Debiganj	54	447	103	450	5050	6105	11165	25
Panchagarh Sadar	64	599	174	773	7519	11213	18732	24
Tentulia	26	212	61	273	4203	6027	8230	30
<b>Total</b>	<b>268</b>	<b>2377</b>	<b>658</b>	<b>2935</b>	<b>32775</b>	<b>38295</b>	<b>69080</b>	<b>24</b>

**6.09 Number of school & college (operating jointly), teacher and student 2011**

Upazila	Number of institute	Number of teacher			Number of student			Students per teacher
		Male	Female	Total	Male	Female	Total	
Atwari	0	0	0	0	0	0	0	0
Boda	0	0	0	0	0	0	0	0
Debiganj	0	0	0	0	0	0	0	0
Panchagarh Sadar	2	45	17	62	314	818	1132	18
Tentulia	0	0	0	0	0	0	0	0
<b>Total</b>	<b>2</b>	<b>45</b>	<b>17</b>	<b>62</b>	<b>314</b>	<b>818</b>	<b>1132</b>	<b>18</b>

**6.10 Number of Government college, teacher and student 2011**

Upazila	Number of college	Number of teacher			Number of student			Students per teacher
		Male	Female	Total	Male	Female	Total	
Atwari	0	0	0	0	0	0	0	0
Boda	0	0	0	0	0	0	0	0
Debiganj	0	0	0	0	0	0	0	0
Panchagarh Sadar	2	48	9	57	2559	2929	5488	96
Tentulia	0	0	0	0	0	0	0	0
<b>Total</b>	<b>2</b>	<b>48</b>	<b>9</b>	<b>57</b>	<b>2559</b>	<b>2929</b>	<b>5488</b>	<b>96</b>

**6.11 Number of Non Government college, teacher and student 2011**

Upazila	Number of college	Number of teacher			Number of student			Students per teacher
		Male	Female	Total	Male	Female	Total	
Atwari	5	123	19	142	1435	862	2297	16
Boda	5	101	27	128	1115	1845	2960	23
Debiganj	7	150	27	177	2411	1899	4310	24
Panchagarh Sadar	4	104	19	123	1539	1240	2779	23
Tentulia	4	76	19	95	474	666	1140	12
<b>Total</b>	<b>25</b>	<b>554</b>	<b>111</b>	<b>665</b>	<b>6974</b>	<b>6512</b>	<b>13486</b>	<b>20</b>

**6.12 Number of madrasah, teacher and student under the madrasah education board 2011**

Upazila	Number of madrasah	Number of teacher			Number of student			Students per teacher
		Male	Female	Total	Male	Female	Total	
Atwari	13	204	17	221	3895	1497	5392	24
Boda	36	240	62	302	4502	2085	6587	22
Debiganj	11	132	21	153	970	530	1500	10
Panchagarh Sadar	23	307	56	363	3918	4002	7920	22
Tentulia	11	136	21	157	1132	855	1987	13
<b>Total</b>	<b>94</b>	<b>1019</b>	<b>177</b>	<b>1196</b>	<b>14417</b>	<b>8969</b>	<b>23386</b>	<b>20</b>

**6.13 Number of kawmi madrasah, teacher and student 2011**

Upazila	Number of madrasah	Number of teacher			Number of student			Students per teacher
		Male	Female	Total	Male	Female	Total	
Atwari	0	0	0	0	0	0	0	0
Boda	2	6	0	6	62	28	90	15
Debiganj	1	2	0	2	40	0	40	20
Panchagarh Sadar	2	12	4	16	135	121	256	16
Tentulia	5	18	0	18	260	0	260	14
<b>Total</b>	<b>10</b>	<b>38</b>	<b>4</b>	<b>42</b>	<b>497</b>	<b>149</b>	<b>646</b>	<b>15</b>

**6.14 Number of ebtedayee madrasah 2011**

Upazila	Number of madrasah	Number of teacher			Number of student			Students per teacher
		Male	Female	Total	Male	Female	Total	
Atwari	0	0	0	0	0	0	0	0
Boda	19	63	31	94	2009	587	2596	27
Debiganj	17	55	10	65	1070	800	1870	28
Panchagarh Sadar	1	4	0	4	71	95	166	41
Tentulia	2	8	0	8	110	125	235	29
<b>Total</b>	<b>39</b>	<b>130</b>	<b>41</b>	<b>171</b>	<b>3260</b>	<b>1607</b>	<b>4867</b>	<b>47</b>

**6.15 Number of technical and vocational institution, teacher and student 2011**

Upazila	Institution	Number of teacher			Number of student			Students per teacher
		Male	Female	Total	Male	Female	Total	
Panchagarh Sadar	1	28	3	31	219	96	315	10
Atwari	2	16	2	18	267	65	332	18
Boda	6	28	4	32	285	80	365	11
Debiganj	3	15	5	20	140	100	240	12
Tentulia	1	3	0	3	70	10	80	27
<b>Total</b>	<b>13</b>	<b>90</b>	<b>14</b>	<b>104</b>	<b>981</b>	<b>351</b>	<b>1332</b>	<b>13</b>

Chapter sources: i) Census Wing, BBS  
 ii) Population and Housing Census 2011  
 iii) Upazila Statistical Office, BBS



# **CHAPTER 7**

## **Health and Social Welfare**





## Health and Social Welfare

### 7.01 Number of Government health complex and health personnel 2011

Upazila	Number of bed	Number of doctor	Number of nurse	Number of technician	Number of other staff
Atwari	50	7	9	1	54
Boda	31	5	7	7	78
Debiganj	31	4	6	8	75
Panchagarh Sadar	200	8	16	4	52
Tentulia	31	2	4	7	61
<b>Total</b>	<b>343</b>	<b>26</b>	<b>42</b>	<b>27</b>	<b>320</b>

### 7.02 Number of private hospital/clinic and related health personnel 2011

Upazila	Number of centre	Number of bed	Number of doctor	Number of nurse	Number of technician	Number of other staff
Atwari	2	7	1	3	4	50
Boda	2	20	3	6	3	17
Debiganj	1	10	6	5	2	8
Panchagarh Sadar	3	36	2	0	3	13
<b>Tentulia</b>	<b>0</b>	<b>0</b>	<b>0</b>	<b>0</b>	<b>0</b>	<b>0</b>
<b>Total</b>	<b>8</b>	<b>73</b>	<b>12</b>	<b>14</b>	<b>12</b>	<b>88</b>

### 7.03 Number of diagnostic centre and related health personnel 2011

Upazila	Number of centre	Number of doctor	Number of nurse	Number of technician	Number of other staff
Atwari	2	0	0	2	4
Boda	2	2	2	2	3
Debiganj	2	0	0	2	18
Panchagarh Sadar	4	4	0	4	12
Tentulia	0	0	0	0	0
<b>Total</b>	<b>10</b>	<b>6</b>	<b>2</b>	<b>10</b>	<b>37</b>

**7.04 Number of missionary hospital and charitable dispensary 2011**

Upazila	Number of centre	Number of bed	Number of doctor	Number of nurse	Number of technician	Number of other staff
Atwari	1	0	2	0	1	14
Boda	0	0	0	0	0	0
Debiganj	0	0	0	0	0	0
Panchagarh Sadar	0	0	0	0	0	0
Tentulia	0	0	0	0	0	0
<b>Total</b>	<b>1</b>	<b>0</b>	<b>2</b>	<b>0</b>	<b>1</b>	<b>14</b>

**7.05 Number of physician/practitioner 2011**

Upazila	Physician	MBBS, FCPS/over	L.M.F	Unani / ayurvedic	Homeopathy
Atwari	31	1	5	8	17
Boda	0	0	35	0	45
Debiganj	7	7	10	4	60
Panchagarh Sadar	7	7	0	39	42
Tentulia	2	2	0	0	13
<b>Total</b>	<b>47</b>	<b>17</b>	<b>50</b>	<b>51</b>	<b>177</b>

**7.06 Number of health centre, providing health and family planning service 2011**

Upazila	Number of union health centre	Health service	Sterilization	M.R.	Injection/ copper-T	Oral pill/ condom	Number of immunization centre
Atwari	6	6	456	30	3438	11826	0
Boda	10	240	6279	0	7840	21723	0
Debiganj	9	8	1	0	0	0	0
Panchagarh Sadar	9	2	86	93	1362	2648	0
Tentulia	6	6	0	0	3	6	0
<b>Total</b>	<b>40</b>	<b>262</b>	<b>6822</b>	<b>123</b>	<b>12643</b>	<b>36203</b>	<b>0</b>

**7.07 Number of existing family planning personnel 2011**

Upazila	TFPO	M.O	FPI	TFPA	FWV	FWA	Midwife or SBA
Atwari	1	0	5	2	5	31	0
Boda	1	1	6	2	11	41	0
Debiganj	1	1	7	3	9	46	17
Panchagarh Sadar	1	2	6	3	14	44	8
Tentulia	1	0	5	2	6	23	6
<b>Total</b>	<b>5</b>	<b>4</b>	<b>29</b>	<b>12</b>	<b>45</b>	<b>185</b>	<b>31</b>

**7.08 Status of family planning activity 2011**

Upazila	Sterilization in number		IUD/ Injection	Condom (in piece)	Oral pill (in cycle)	Copper- T
	Vasectomy	Tubectomy				
Atwari	1942	2049	12486	86023	1689822	667
Boda	2838	3421	7840	760	71723	866
Debiganj	1010	108	10210	1099	19467	801
Panchagarh Sadar	30	56	96	111	2537	76
Tentulia	77	115	8689	46074	1.17.249	423
<b>Total</b>	<b>5897</b>	<b>5749</b>	<b>39321</b>	<b>134067</b>	<b>1783549</b>	<b>2833</b>

**7.09 Number of cooperative society and member 2011**

Upazila	Number of co-operative society	Number of member		Total
		Male	Female	
Atwari	99	5968	838	6806
Boda	85	2344	29	2373
Debiganj	219	12619	1274	13893
Panchagarh Sadar	301	16661	2021	18682
Tentulia	149	5094	868	5962
<b>Total</b>	<b>853</b>	<b>42686</b>	<b>5030</b>	<b>47716</b>

**7.10 Number of Government office, post office, bank, NGO and dak-banglow/rest house 2011**

Upazila	All Government offices	Post office	All nationalized bank branches	All private bank branches	All NGOs	Dak-banglow/rest house
Atwari	25	9	7	0	19	2
Boda	25	11	5	2	12	2
Debiganj	27	10	7	1	10	4
Panchagarh Sadar	75	11	13	4	14	3
Tentulia	22	9	3	0	15	3
<b>Total</b>	<b>174</b>	<b>50</b>	<b>35</b>	<b>7</b>	<b>70</b>	<b>14</b>

**7.11 Number of cinema hall, registered club, auditorium, public library and orphanage 2011**

Upazila	Cinema hall	Registered club	Library	Orphanage	Auditorium
Atwari	1	30	0	10	0
Boda	1	63	0	3	1
Debiganj	3	48	1	8	1
Panchagarh Sadar	2	17	1	4	1
Tentulia	1	7	1	2	1
<b>Total</b>	<b>8</b>	<b>165</b>	<b>3</b>	<b>27</b>	<b>4</b>

**7.12 Number of different club and store 2011**

Upazila	Sports club	Cultural club	Science club	Other social club
Atwari	30	27	0	1
Boda	1	1	0	1
Debiganj	0	1	0	1
Panchagarh Sadar	15	2	0	2
Tentulia	16	2	0	1
<b>Total</b>	<b>62</b>	<b>33</b>	<b>0</b>	<b>6</b>

**7.13 Number of hat-bazar, growth centre, hotel & restaurant 2011**

Upazila	Daily bazar	Weekly hat	Growth centre	Restaurant	Hotel (residential)
Atwari	19	6	4	19	2
Boda	25	20	4	82	1
Debiganj	24	24	1	125	0
Panchagarh Sadar	6	38	5	52	5
Tentulia	3	19	3	33	1
<b>Total</b>	<b>77</b>	<b>107</b>	<b>17</b>	<b>311</b>	<b>9</b>

**7.14 Number of warehouse and their storage capacity 2011**

(Capacity in metric ton)

Upazila	Food godown		Fertilizer godown		Jute godown		Other godown	
	Number	Capacity	Number	Capacity	Number	Capacity	Number	Capacity
Atwari	3	7000	0	0	0	0	0	0
Boda	2	3500	0	0	0	0	0	0
Debiganj	5	5000	0	0	0	0	0	0
Panchagarh Sadar	5	6500	0	0	0	0	12	400
Tentulia	2	1200	0	0	0	0	0	0
<b>Total</b>	<b>17</b>	<b>23200</b>	<b>0</b>	<b>0</b>	<b>0</b>	<b>0</b>	<b>12</b>	<b>400</b>

**7.15 Progress of rural electrification 2011**

Upazila	Number of electrified							
	Village	Residential holding	Large scale industry	Small scale Industry	Deep tube-well	Power pump	Commercial holding	Others
Atwari	29	2800	0	2	74	0	0	0
Boda	116	6553	1	122	121	1425	1386	0
Debiganj	86	6862	5	80	78	1150	825	0
Panchagarh Sadar	32	5402	0	112	18	856	944	0
Tentulia	45	9000	0	0	25	334	0	0
<b>Total</b>	<b>308</b>	<b>30617</b>	<b>6</b>	<b>316</b>	<b>316</b>	<b>3765</b>	<b>3155</b>	<b>0</b>

**7.16 Number of technical personnel 2011**

Upazila	Agricultural personnel	Live-stock personnel	Plant protection	Fishery personnel	Sanitary personnel	Family planning personnel	Trained midwife
Atwari	41100	100	12500	2600	390	120	0
Boda	45100	9	30	4	22	62	0
Debiganj	87663	150	45	560	320	210	150
Panchagarh Sadar	66619	76	66000	700	150	255	113
Tentulia	20936	1	11	17	8	63	6
<b>Total</b>	<b>261418</b>	<b>336</b>	<b>78586</b>	<b>3881</b>	<b>890</b>	<b>710</b>	<b>269</b>

**7.17 Number of community clinic and person engaged 2011**

Upazila	Number of clinic	Number of health asst.	Number of FPI	Number of FWV	Number of FWA	Number of other staff
Atwari	13	17	6	6	30	0
Boda	23	33	6	11	41	3
Debiganj	23	30	7	9	46	24
Panchagarh Sadar	21	27	6	14	44	32
Tentulia	10	12	5	6	23	0
<b>Total</b>	<b>90</b>	<b>119</b>	<b>30</b>	<b>46</b>	<b>184</b>	<b>59</b>

Chapter sources: i) Demography and Health Wing, BBS  
 ii) Upazila Statistical Office, BBS

# **CHAPTER 8**

## **Transportation and Communication**





## Transportation and Communication

### 8.01 Length of metalled, semi metalled and unmetalled road 2011

(Kilometer)

Upazila	Metalled road	Semi metalled road	Unmetalled (kacha) road	Total
Atwari	83.51	0	693.51	777.01
Boda	84.86	0	558.16	653.02
Debiganj	112	0	436	548
Panchagarh Sadar	68	1	734	803
Tentulia	101	0	364.5	465.5
<b>Total</b>	<b>449.37</b>	<b>1</b>	<b>2786.17</b>	<b>3246.53</b>

### 8.02 Length of railway and water way 2011

(Kilometer)

Upazila	Total railway (all broad gage, meter gage & duel gage)	Water way in monsoon (river + canal)	Water way round the year (river + canal)
Atwari	7	0	0
Boda	8.5	2.56	1.5
Debiganj	0	52	35
Panchagarh Sadar	8	157	84
Tentulia	0	0	0
<b>Total</b>	<b>23.5</b>	<b>211.56</b>	<b>120.5</b>

### 8.03 Length of embankment road & canal 2011

(Kilometer)

Upazila	Embankment road	Canal	Others road
Atwari	5	0	0
Boda	0	2.56	0
Debiganj	0	0	0
Panchagarh Sadar	0	0	0
Tentulia	0	0	0
<b>Total</b>	<b>5</b>	<b>2.56</b>	<b>0</b>

**8.04 Number of bridge, baily bridge, culvert, pool, shako and others 2011**

Upazila	Bridge	Baily bridge	Culvert	Pool	Shako	Others
Atwari	300	0	749	0	1	0
Boda	29	0	819	0	17	0
Debiganj	15	0	557	42	6	45
Panchagarh Sadar	5	0	1279	0	0	0
Tentulia	6	0	450	0	0	0
<b>Total</b>	<b>355</b>	<b>0</b>	<b>3854</b>	<b>42</b>	<b>24</b>	<b>45</b>

**8.05 Number of railway station, steamer/launch station and bus stand 2011**

Upazila	Railway station	Steamer/launch station	Bus stand
Atwari	1	0	2
Boda	0	0	1
Debiganj	0	0	6
Panchagarh Sadar	2	0	1
Tentulia	0	0	10
<b>Total</b>	<b>3</b>	<b>0</b>	<b>20</b>

**8.06 Number of registered rickshaw, van, easy bike and auto-rickshaw 2011**

Upazila	Rickshaw	Van	Easy bike and auto-rickshaw	Tempo
Atwari	1	815	0	0
Boda	20	1200	50	0
Debiganj	0	3502	0	0
Panchagarh Sadar	901	869	0	0
Tentulia	0	750	50	0
<b>Total</b>	<b>922</b>	<b>7136</b>	<b>100</b>	<b>0</b>

**8.07 Number of non-registered rickshaw, van, easy bike and auto-rickshaw 2011**

Upazila	Rickshaw	Van	Easy bike and auto-rickshaw	Tempo	Nochimon/korimon/bhotvoti
Atwari	0	186	26	7	312
Boda	10	300	20	0	50
Debiganj	0	272	67	4	47
Panchagarh Sadar	320	260	32	15	12
Tentulia	0	200	0	0	40
<b>Total</b>	<b>330</b>	<b>1218</b>	<b>145</b>	<b>26</b>	<b>461</b>

Chapter sources: i) National Accounting Wing, BBS  
ii) Upazila Statistical Office, BBS



# **CHAPTER 9**

## **Price and Wage**



## Price and Wage

### 9.01 Average price of selected item 2011

(Price unit per kg/taka)

Upazila	Fine rice (minicate)	Medium rice	Coarse rice (normal)	Wheat	Coarse flour (Aata)	Potato	Soyabean oil
Atwari	34	26	24	25	33	12	128
Boda	36	30	24	22	29	10	130
Debiganj	40	32	28	20	30	10	130
Panchagarh Sadar	42	35	30	16	24	10	125
Tentulia	42	36	25	18	36	12	120
<b>Average</b>	<b>38.8</b>	<b>31.8</b>	<b>26.2</b>	<b>20.2</b>	<b>30.4</b>	<b>10.8</b>	<b>126.6</b>

### 9.02 Annual average wholesale price of selected building material 2011

(Price in taka)

Upazila	Brick-01 (per1000)	Cement (per 50 kg bag)	Iron bar (per ton)	Sand-01 (per c.f.t.)	Sand -02 (per c.f.t.)	Stone (per c.f.t.)
Atwari	6000	470	60000	7	5	65
Boda	6000	450	70000	18	16	20
Debiganj	6100	480	60000	6	7	65
Panchagarh Sadar	6000	450	60000	3	2.5	65
Tentulia	7000	455	63000	3	4	23
<b>Average</b>	<b>6220</b>	<b>461</b>	<b>62600</b>	<b>7.4</b>	<b>6.9</b>	<b>47.6</b>

### 9.03 Daily average wage rate of agricultural labour 2011

(Rate in taka)

Upazila	Labour		
	Male	Female	Child (under 15 years old)
Atwari	220	150	70
Boda	200	180	100
Debiganj	200	150	100
Panchagarh Sadar	200	180	100
Tentulia	250	150	80
<b>Average</b>	<b>214</b>	<b>162</b>	<b>90</b>

## 9.04 Daily average wage rate of construction labour 2011

(Rate in taka)

Upazila	Labour					
	Mason	Helper (Jogaly)	Carpenter	Colour	Electric	Plumber
Atwari	300	200	250	300	300	300
Boda	250	180	300	300	300	350
Debiganj	400	200	300	300	350	325
Panchagarh Sadar	300	200	280	270	350	400
Tentulia	350	220	300	300	400	350
<b>Average</b>	<b>320</b>	<b>200</b>	<b>286</b>	<b>294</b>	<b>340</b>	<b>345</b>

## 9.05 Daily average wage rate of non-agricultural labour 2011

(Wage in taka)

Upazila	Porter (coolee)	Garden labour male	Garden female labour	Other labour (Adult)	Other labour (Child)
Atwari	170	150	100	150	50
Boda	200	180	150	200	100
Debiganj	250	200	180	220	100
Panchagarh Sadar	250	220	150	150	70
Tentulia	600	250	150	0	80
<b>Average</b>	<b>294</b>	<b>200</b>	<b>146</b>	<b>144</b>	<b>80</b>

## 9.06 Average doctor's fee per patient 2011

(Fee in taka)

Upazila	Doctor				
	MBBS	FCPS	Dentist	Gynaecologist	Homeopathy
Atwari	60	0	0	0	0
Boda	200	0	0	0	50
Debiganj	200	100	50	0	50
Panchagarh Sadar	250	300	200	300	30
Tentulia	200	0	50	100	0
<b>Average</b>	<b>182</b>	<b>80</b>	<b>60</b>	<b>80</b>	<b>26</b>



**9.07 Average rate of vehicle per kilo meter 2011**

(Rate in taka)

Upazila	Vehicle				
	Rickshaw	Rickshaw van	Easy bike	Auto rickshaw	Tempo
Atwari	5	4	7	7	5
Boda	10	5	20	0	5
Debiganj	0	5	3	3	3
Panchagarh Sadar	10	5	10	15	15
Tentulia	5	2	4	4	0
<b>Average</b>	<b>6</b>	<b>4.2</b>	<b>8.8</b>	<b>5.8</b>	<b>5.6</b>

Chapter sources: i) National Accounting Wing, BBS  
ii) Upazila Statistical Office, BBS



# **CHAPTER 10**

## **Urban Area Statistics**



## Urban Area Statistics

### 10.01 Number of ward, mahalla and household by municipality 2011

Upazila	Name of municipality	Total ward	Total mahalla	Total holding	Total household
Atwari	-	0	0	0	0
Boda	Boda	9	24	3951	3951
Debiganj	-	0	0	0	0
Panchagarh Sadar	Panchagarh	9	32	10105	10105
Tentulia	-	0	0	0	0
<b>Total</b>		<b>18</b>	<b>56</b>	<b>14056</b>	<b>14056</b>

### 10.02 Area, population and density by municipality 2011

Upazila	Name of municipality	Area (In sq. km.)	Population Census-2011			Density per sq.km.
			Male	Female	Total	
Atwari	-	0	0	0	0	0
Boda	Boda	14.32	7428	7359	14787	1032
Debiganj	-	0	0	0	0	0
Panchagarh Sadar	Panchagarh	20.72	23241	22348	45589	2200
Tentulia	-	0	0	0	0	0
<b>Total</b>		<b>35.04</b>	<b>30669</b>	<b>29707</b>	<b>60376</b>	<b>3232</b>

### 10.03 Number of primary school (Class I-V), teacher and student by municipality 2011

Upazila	Primary school			Number of teacher			Number of student			Students per teacher
	Govt.	Non-govt.	Total	Govt.	Non-govt.	Total	Govt.	Non-govt.	Total	
Atwari	0	0	0	0	0	0	0	0	0	0
Boda	5	3	8	30	12	42	1429	425	1854	44
Debiganj	0	0	0	0	0	0	0	0	0	0
Panchagarh Sadar	6	8	14	48	32	80	1925	2106	4031	50
Tentulia	0	0	0	0	0	0	0	0	0	0
<b>Total</b>	<b>11</b>	<b>11</b>	<b>22</b>	<b>78</b>	<b>44</b>	<b>122</b>	<b>3354</b>	<b>2531</b>	<b>5885</b>	<b>48</b>

**10.04 Number of secondary school, teacher and student by municipality 2011**

Upazila	Number of institute	Number of teacher			Number of student			Students per teacher
		Male	Female	Total	Male	Female	Total	
Atwari	0	0	0	0	0	0	0	0
Boda	5	68	18	80	960	992	1952	24
Debiganj	0	0	0	0	0	0	0	0
Panchagarh Sadar	8	99	36	135	1665	1852	3517	26
Tentulia	0	0	0	0	0	0	0	0
<b>Total</b>	<b>13</b>	<b>167</b>	<b>54</b>	<b>215</b>	<b>2625</b>	<b>2844</b>	<b>5469</b>	<b>25</b>

**10.05 Number of secondary school & college (operating jointly), teacher and student by municipality 2011**

Upazila	Number of institute	Number of teacher			Number of student			Students per teacher
		Male	Female	Total	Male	Female	Total	
Panchagarh Sadar	1	15	12	27	0	552	552	20
Atwari	0	0	0	0	0	0	0	0
Boda	0	0	0	0	0	0	0	0
Debiganj	0	0	0	0	0	0	0	0
Tentulia	0	0	0	0	0	0	0	0
<b>Total</b>	<b>1</b>	<b>15</b>	<b>12</b>	<b>27</b>	<b>0</b>	<b>552</b>	<b>552</b>	<b>20</b>

**10.06 Number of college, teacher and student by municipality 2011**

Upazila	Number of college	Number of teacher			Number of student			Students per teacher
		Male	Female	Total	Male	Female	Total	
Atwari	0	0	0	0	0	0	0	0
Boda	2	56	21	77	910	1719	2629	34
Debiganj	0	0	0	0	0	0	0	0
Panchagarh Sadar	3	61	31	92	815	1192	2007	22
Tentulia	0	0	0	0	0	0	0	0
<b>Total</b>	<b>5</b>	<b>117</b>	<b>52</b>	<b>169</b>	<b>1725</b>	<b>2911</b>	<b>4636</b>	<b>27</b>

**10.07 Number of vocational institute by municipality 2011**

Upazila	Number of institution	Number of teacher	Number of student
Atwari	0	0	0
Boda	2	14	215
Debiganj	0	0	0
Panchagarh Sadar	0	0	0
Tentulia	0	0	0
<b>Total</b>	<b>2</b>	<b>14</b>	<b>215</b>

**10.08 Number of family planning clinical centre by municipality 2011**

Upazila	Sterilization centre	Mobile centre	Injection centre	Menstrual regularization centre	Family welfare centre
Atwari	0	0	0	0	0
Boda	1	0	1	1	1
Debiganj	0	0	0	0	0
Panchagarh Sadar	3	0	3	3	1
Tentulia	0	0	0	0	0
<b>Total</b>	<b>4</b>	<b>0</b>	<b>4</b>	<b>4</b>	<b>2</b>

**10.09 Number of family planning personnel working by municipality 2011**

Upazila	Doctor	Family planning inspector	Family planning assistant	Family planning visitor	Midwife/ birth attendant (Dais)
Atwari	0	0	0	0	0
Boda	1	0	2	3	0
Debiganj	0	0	0	0	0
Panchagarh Sadar	2	6	12	6	12
Tentulia	0	0	0	0	0
<b>Total</b>	<b>3</b>	<b>6</b>	<b>14</b>	<b>9</b>	<b>12</b>

**10.10 Number of fire service unit and causality by municipality 2011**

Upazila	Fire service unit	Person employed	Fire case	Monetary loss (in thousand taka)	Person dead	Person injured
Atwari	0	0	0	0	0	0
Boda	1	10	5	19	0	0
Debiganj	0	0	0	0	0	0
Panchagarh Sadar	1	25	21	90.5	0	0
Tentulia	0	0	0	0	0	0
<b>Total</b>	<b>2</b>	<b>35</b>	<b>26</b>	<b>109.5</b>	<b>0</b>	<b>0</b>

**10.11 Number of cinema hall and audience capacity by municipality 2011**

Upazila	Number of cinema hall	Audience capacity	Show per day	Attendance (daily average)
Atwari	0	0	0	0
Boda	1	200	3	125
Debiganj	0	0	0	0
Panchagarh Sadar	1	250	2	60
Tentulia	0	0	0	0
<b>Total</b>	<b>2</b>	<b>450</b>	<b>5</b>	<b>185</b>

**10.12 Institutional accommodation facility by municipality 2011**

Upazila	Residential hostel		Hall/hostel		Mess/barracks	
	Number	Capacity	Number	Capacity	Number	Capacity
Atwari	0	0	0	0	0	0
Boda	1	15	0	0	0	0
Debiganj	0	0	0	0	0	0
Panchagarh Sadar	5	300	4	650	32	250
Tentulia	0	0	0	0	0	0
<b>Total</b>	<b>6</b>	<b>315</b>	<b>4</b>	<b>650</b>	<b>32</b>	<b>250</b>



**10.13 Other accommodation facility by municipality 2011**

Upazila	Orphanage		Slum area		Rufugee camp	
	Number	Capacity	Area in acre	Number H/H	Area in acre	Number H/H
Atwari	0	0	0	0	0	0
Boda	3	90	0	0	0	0
Debiganj	0	0	0	0	0	0
Panchagarh Sadar	1	150	0	0	0	0
Tentulia	0	0	0	0	0	0
<b>Total</b>	<b>4</b>	<b>240</b>	<b>0</b>	<b>0</b>	<b>0</b>	<b>0</b>

**10.14 Police personnel and criminal offences by municipality 2011**

Upazila	Police personnel	Criminal offence		Traffic accident (Reported)		
		Number of offence	Number of case filled	Number of accident	Person killed	Person injured
Atwari	0	0	0	0	0	0
Boda	33	0	152	2	2	2
Debiganj	0	0	0	0	0	0
Panchagarh Sadar	38	31	17	11	4	21
Tentulia	0	0	0	0	0	0
<b>Total</b>	<b>71</b>	<b>31</b>	<b>169</b>	<b>13</b>	<b>6</b>	<b>23</b>

**10.15 Medical institution and personnel by municipality 2011**

Upazila	Government institution	Private institution	Medical personnel			
			Bed	Doctor	Nurse	Technician
Atwari	0	0	0	0	0	0
Boda	2	2	51	5	13	10
Debiganj	0	0	0	0	0	0
Panchagarh Sadar	1	6	232	10	13	7
Tentulia	0	0	0	0	0	0
<b>Total</b>	<b>3</b>	<b>8</b>	<b>283</b>	<b>15</b>	<b>26</b>	<b>17</b>

Chapter sources: i) Population and Housing Census 2011  
ii) Upazila Statistical Office, BBS



# **CHAPTER 11**

## **Public Administration, Accounts and Banking**



## Public Administration, Accounts and Banking

### 11.01 Sanction post of Government employee by category 2011

Upazila	Class-I	Class-II	Class-III	Class-IV	Number of total employee
Atwari	37	32	261	104	434
Boda	46	10	685	120	861
Debiganj	48	26	738	95	907
Panchagarh Sadar	358	22	2890	267	3537
Tentulia	14	13	188	83	298
<b>Total</b>	<b>503</b>	<b>103</b>	<b>4762</b>	<b>669</b>	<b>6037</b>

### 11.02 Existing position of Government employee by category 2011

Upazila	Class-I	Class-II	Class-III	Class-IV	Number of total employee
Atwari	18	27	190	67	302
Boda	12	7	577	93	689
Debiganj	18	14	587	66	685
Panchagarh Sadar	188	20	2385	262	2855
Tentulia	12	12	188	82	294
<b>Total</b>	<b>248</b>	<b>80</b>	<b>3927</b>	<b>570</b>	<b>4825</b>

### 11.03 Number of employee by type 2011

Upazila	Police personnel	Ansar personnel	VDP personnel	Autonomous bodies	Local Government employee
Atwari	35	324	6656	35	12
Boda	33	480	992	0	29
Debiganj	40	452	6743	1	18
Panchagarh Sadar	238	452	9876	1028	2520
Tentulia	25	356	8092	525	19
<b>Total</b>	<b>371</b>	<b>2064</b>	<b>32359</b>	<b>1589</b>	<b>2598</b>

**11.04 Number of employee by local Government institution 2011**

Upazila	City corporation	Municipality	Zila parishad	Upazila parishad	Union parishad
Atwari	0	0	0	4	72
Boda	0	17	1	369	122
Debiganj	0	0	0	2	102
Panchagarh Sadar	0	53	12	342	110
Tentulia	0	0	0	294	69
<b>Total</b>	<b>0</b>	<b>70</b>	<b>13</b>	<b>1011</b>	<b>475</b>

**11.05 Number of branch of nationalized commercial bank 2011**

Upazila	Number of branch	Number of employee	Number of savings A/C	Number of current account
Atwari	4	39	18816	1767
Boda	2	21	6601	777
Debiganj	3	33	40241	2140
Panchagarh Sadar	9	87	50346	2287
Tentulia	3	26	14197	1791
<b>Total</b>	<b>21</b>	<b>206</b>	<b>130201</b>	<b>8762</b>

**11.06 Number of branch of private commercial bank 2011**

Upazila	Number of branch	Number of employee	Number of savings A/C	Number of current A/C
Atwari	0	0	0	0
Boda	2	9	785	0
Debiganj	1	18	100	103
Panchagarh Sadar	4	42	15300	372
Tentulia	0	0	0	0
<b>Total</b>	<b>7</b>	<b>69</b>	<b>16185</b>	<b>475</b>

**11.07 Number of branch of specialized (Krishi, Co-operative etc) bank 2011**

Upazila	Number of branch	Number of employee	Number of savings A/C	Number of current A/C
Atwari	3	16	4412	60
Boda	4	22	27041	181
Debiganj	4	22	7963	188
Panchagarh Sadar	3	23	7878	226
Tentulia	3	19	5363	215
<b>Total</b>	<b>17</b>	<b>102</b>	<b>52657</b>	<b>870</b>

**11.08 Number of branch of Grameen bank 2011**

Upazila	Number of branch	Number of employee	Number of member	Number of account	Annual deposit (in lac tk.)	Annual credit disbursed (in lac tk.)
Atwari	7	44	17845	20534	700	950
Boda	5	42	17666	17660	3.61	3.24
Debiganj	5	35	16545	16545	3.41	3.12
Panchagarh Sadar	3	23	840	872	218	7.05
Tentulia	4	28	11365	148	2.92	210
<b>Total</b>	<b>24</b>	<b>172</b>	<b>64261</b>	<b>55759</b>	<b>1217.02</b>	<b>1866</b>

**11.10 Number of insurance company 2011**

Upazila	Number of insurance company	Number of employee	Number of client	Annual premium (in lac tk.)	Annual claimed paid (in lac tk.)
Atwari	4	130	23200	909	105
Boda	6	196	9596	958	153
Debiganj	7	76	19050	1.63	1.52
Panchagarh Sadar	4	22	4210	502	0
Tentulia	4	140	1458	102	104
<b>Total</b>	<b>25</b>	<b>564</b>	<b>57514</b>	<b>2472.63</b>	<b>363.52</b>

**11.12 Number of co-operative society 2011**

Upazila	Number	Number of employee	Number of client
Atwari	99	5	6805
Boda	85	7	2373
Debiganj	219	28	13893
Panchagarh Sadar	301	6	18682
Tentulia	149	7	5962
<b>Total</b>	<b>853</b>	<b>53</b>	<b>47715</b>

**11.13 Numbers of money exchange agency 2011**

Upazila	Number of money exchange agency	Number of employee	Annual transactions per money exchange agency	Annual profit per agency (lac tk)
Atwari	0	0	0	0
Boda	0	0	0	0
Debiganj	1	18	0	0
Panchagarh Sadar	0	0	0	0
Tentulia	0	0	0	0
<b>Total</b>	<b>1</b>	<b>18</b>	<b>0</b>	<b>0</b>

**11.14 Number of branch and accounts of Sonali and Janata bank 2011**

Upazila	Sonali bank					Janata bank				
	Number of branch	Account				Number of branch	Account			
		S.D	C.D	F.D	S.T.D		S.D	C.D	F.D	S.T.D
Atwari	1	4378	224	2952	1924	2	12843	1436	97	157
Boda	1	6267	3	135	49	0	0	0	0	0
Debiganj	1	8788	535	89	36	2	31453	1605	107	36
Panchagarh Sadar	1	8092	190	142	12	1	5050	105	21	2
Tentulia	2	11366	1682	97	52	0	0	0	0	0
<b>Total</b>	<b>6</b>	<b>38891</b>	<b>2634</b>	<b>3415</b>	<b>2073</b>	<b>5</b>	<b>49346</b>	<b>3146</b>	<b>225</b>	<b>195</b>



**11.15 Number of branch and accounts of Rupali and Agrani bank 2011**

Upazila	Rupali bank					Agrani bank				
	Number of branch	Account				Number of branch	Account			
		S.D	C.D	F.D	S.T.D		S.D	C.D	F.D	S.T.D
Atwari	0	0	0	0	0	1	1595	107	30	20
Boda	1	0	85	15	0	0	0	0	0	0
Debiganj	0	0	0	0	0	0	0	0	0	0
Panchagarh Sadar	1	0	120	42	5	4	6000	499	141	16
Tentulia	0	0	0	0	0	1	2831	109	17	5
<b>Total</b>	<b>2</b>	<b>0</b>	<b>205</b>	<b>57</b>	<b>5</b>	<b>6</b>	<b>10426</b>	<b>715</b>	<b>188</b>	<b>41</b>

**11.16 Number of branch and accounts of Pubali and Uttara bank 2011**

Upazila	Pubali bank					Uttara bank				
	Number of branch	Account				Number of branch	Account			
		S.D	C.D	F.D	S.T.D		S.D	C.D	F.D	S.T.D
Atwari	0	0	0	0	0	0	0	0	0	0
Boda	0	0	0	0	0	0	0	0	0	0
Debiganj	0	0	0	0	0	0	0	0	0	0
Panchagarh Sadar	1	0	110	36	3	1	0	91	31	4
Tentulia	0	0	0	0	0	0	0	0	0	0
<b>Total</b>	<b>1</b>	<b>0</b>	<b>110</b>	<b>36</b>	<b>3</b>	<b>1</b>	<b>0</b>	<b>91</b>	<b>31</b>	<b>4</b>

**11.17 Number of branch and accounts of Krishi and Co-operative bank 2011**

Upazila	Krishi bank					Co-operative bank				
	Number of branch	Account				Number of branch	Account			
		S.D	C.D	F.D	S.T.D		S.D	C.D	F.D	S.T.D
Atwari	3	4412	60	67	5	0	0	0	0	0
Boda	4	18989	152	130	17	0	0	0	0	0
Debiganj	4	7963	188	108	17	0	0	0	0	0
Panchagarh Sadar	3	7698	177	107	8	0	0	0	0	0
Tentulia	3	5363	215	115	6	0	0	0	0	0
<b>Total</b>	<b>17</b>	<b>44425</b>	<b>792</b>	<b>527</b>	<b>53</b>	<b>0</b>	<b>0</b>	<b>0</b>	<b>0</b>	<b>0</b>

Chapter source: Upazila Statistical Office, BBS



# **CHAPTER 12**

## **Miscellaneous**



## Miscellaneous

### 12.01 Number of Government health complex and health facility 2011

Upazila	Number of hospital/ clinic/ nursing home	Number of bed	Number of doctor	Number of nurse	Number of technician	Number of other staff	Number of patient under health facility			
							Indoor		Outdoor	
							Male	Female	Male	Female
Atwari	1	50	7	9	1	54	2610	2782	28117	26397
Boda	1	31	5	7	7	78	2122	2332	10560	15840
Debiganj	1	31	4	6	8	75	2715	2810	28502	27305
Panchagarh Sadar	1	200	8	16	4	52	2510	2965	10200	19800
Tentulia	1	31	2	4	7	61	531	449	10889	11977
<b>Total</b>	<b>5</b>	<b>343</b>	<b>26</b>	<b>42</b>	<b>27</b>	<b>320</b>	<b>10488</b>	<b>11338</b>	<b>88268</b>	<b>101319</b>

### 12.02 Number of Non-Government health complex and health facility 2011

Upazila	Number of hospital/ clinic/ nursing home	Number of bed	Number of doctor	Number of nurse	Number of technician	Number of other staff	Number of patient under health facility			
							Indoor		Outdoor	
							Male	Female	Male	Female
Atwari	2	7	1	3	4	50	0	412	1728	2426
Boda	2	20	3	6	3	17	355	605	4005	3075
Debiganj	1	10	6	5	2	8	0	510	1820	2510
Panchagarh Sadar	4	40	4	0	4	16	885	3915	0	0
Tentulia	0	0	0	0	0	0	0	0	0	0
<b>Total</b>	<b>9</b>	<b>77</b>	<b>14</b>	<b>14</b>	<b>13</b>	<b>91</b>	<b>1240</b>	<b>5442</b>	<b>7553</b>	<b>8011</b>

**12.03 Number of person/institute borrowing money from nationalized bank 2011**

Upazila	Number of branch of all nationalized banks	Number of borrower									
		Agriculture debt		Industry debt		Other debt		Number of borrower		Total debt (crore tk)	
		Male	Female	Male	Female	Male	Female	Male	Female	Male	Female
Atwari	7	4458	41	0	0	914	1038	4023	743	1034.8	202.92
Boda	6	8955	995	58	1	1617	1584	10573	1781	40.29	2.61
Debiganj	3	750	35	6	0	260	25	1016	60	349.5	0.96
Panchagarh Sadar	9	910	20	1200	0	360	10	2470	30	9.2	0.5
Tentulia	3	232	86	15	2	639	44	886	132	15	2
<b>Total</b>	<b>28</b>	<b>15305</b>	<b>1177</b>	<b>1279</b>	<b>3</b>	<b>3790</b>	<b>2701</b>	<b>18968</b>	<b>2746</b>	<b>1448.8</b>	<b>208.99</b>

**12.04 Number of person/institute borrowing money from private commercial bank 2011**

Upazila	Number of branch of all private commercial banks	Number of borrower									
		Agriculture debt		Industry debt		Other debt		Number of borrower		Total debt (crore tk)	
		Male	Female	Male	Female	Male	Female	Male	Female	Male	Female
Atwari	0	0	0	0	0	0	0	0	0	0	0
Boda	2	75	75	0	0	238	17	313	92	5.88	0.61
Debiganj	0	0	0	0	0	0	0	0	0	0	0
Panchagarh Sadar	4	0	0	1800	112	52	5	1852	117	1	0.2
Tentulia	0	0	0	0	0	0	0	0	0	0	0
<b>Total</b>	<b>6</b>	<b>75</b>	<b>75</b>	<b>1800</b>	<b>112</b>	<b>290</b>	<b>22</b>	<b>2165</b>	<b>209</b>	<b>6.88</b>	<b>0.81</b>

Chapter source: Upazila Statistical Office, BBS

## **The Personnel of Editors' and PDs' Forum Engaged in Editing the Report**

### **Editors' Forum**

#### **Convener**

**Mr. Jafor Ahmed Khan**  
(Deputy Secretary)  
Director  
Bangladesh Bureau of Statistics

#### **Members**

Ms. Aziza Parvin	Director
Mr. Md. Moniruzzaman	Director (Deputy Secretary)
Ms. Salima Sultana	Director (Deputy Secretary)
Mr. Md. Altaf Hossain	Director (Deputy Secretary)
Mr. Md. Zahidul Hoque Sardar	Director
Mr. Ghose Subobrata	Director
Mr. Md. Shamsul Alam	Director (C.C)
Mr. Dilip Kumar Bhadra	Joint Director
Dr. Dipankar Roy	Deputy Director
Mr. Mohammad Shaheen	Deputy Director

#### **Member Secretary**

Mr. Abul Kalam Azad	Director, BBS
---------------------	---------------

## **PDs' Forum**

### **Convener**

**Md. Mashud Alam**  
Joint Director  
Bangladesh Bureau of Statistics

### **Members**

Mr. Md. Zahidul Hoque Sardar	Project Director, GIS Project
Mr. Md. Altaf Hossain	Project Director, Population & Housing Census 2011 Project
Mr. Md. Mashud Alam	Project Director, FS-NSC Project
Mr. Kabir Uddin Ahmed	Project Director, SISB Project
Mr. Bidhan Baral	Project Director, HDUAPS Project
Dr. Dipankar Roy	Project Director, MSCW Project
Mr. Dilder Hossain	Project Director, Economic Census 2013 Project
Mr. Jatan Kumar Saha	Project Director, DIS Project
Mr. A K M Ashraful Haque	Project Director, MSVSB Project



## **List of BBS Officials Engaged in Preparation of this Report**

1. Mr. Iftekhairul Karim, Focal Point Officer, District Statistics 2011, BBS
2. Mr. Nasir Uddin Ahmmed, Deputy Director & Ex.Focal Point Officer, BBS
3. Mr. Md. Ariful Islam, Regional Statistical Officer, Dinajpur, BBS
4. Mr. Md. Mofizur Rahman, Programmer, Computer Wing, BBS
5. Mr. Mohammad Abdullah, Assistant Statistical Officer, FA and MIS, BBS
6. Mr. Md. Monzurul Islam, Upazila Statistical Officer, Chuadanga Sadar, BBS
7. Ms. Mahbuba Begum, Assistant Statistical Officer, Computer Wing, BBS
8. Mr. Md. Abdul Mannan, Administrative Officer, FA and MIS, BBS
9. Mr. Md. Yeasin Miah, Statistical Investigator, Upazila Statistical Office, Rupganj, Narayanganj