

Month: April 2015

Table 1. Consumer Price Index (CPI) And Inflation Rate (Point To Point)

(2005-06=100)

CPI Classification	2011-12	2012-13	2013-14	2013-14			2014-15		
				Feb'14	Mar'14	April'14	Feb'15	Mar'15	April'15
NATIONAL									
General index	170.19	181.73	195.08	198.54	198.84	198.93	210.74	211.31	211.51
<i>Inflation</i>	8.69	6.78	7.35	7.44	7.48	7.46	6.14	6.27	6.32
Food index	183.65	193.24	209.79	214.17	214.45	214.50	227.25	228.12	228.39
<i>Inflation</i>	7.72	5.22	8.56	8.84	8.96	8.95	6.11	6.37	6.48
Non-food index	152.94	166.97	176.23	178.51	178.82	178.97	189.58	189.77	189.86
<i>Inflation</i>	10.21	9.17	5.55	5.37	5.26	5.23	6.20	6.12	6.08
RURAL									
General index	173.26	183.90	196.90	200.40	200.72	200.82	212.21	212.79	212.92
<i>Inflation</i>	8.69	6.14	7.07	7.17	7.21	7.19	5.89	6.01	6.03
Food index	183.62	192.14	207.72	212.12	212.39	212.44	224.25	225.03	225.17
<i>Inflation</i>	7.50	4.64	8.11	8.42	8.53	8.52	5.72	5.95	5.99
Non-food index	156.77	170.79	179.69	181.74	182.15	182.32	193.04	193.32	193.42
<i>Inflation</i>	10.96	8.94	5.21	4.92	4.83	4.81	6.22	6.13	6.09
URBAN									
General index	164.52	177.71	191.73	195.12	195.36	195.45	208.03	208.58	208.90
<i>Inflation</i>	8.70	8.02	7.89	7.97	7.98	7.96	6.62	6.77	6.88
Food index	183.71	195.91	214.85	219.17	219.48	219.53	234.56	235.64	236.26
<i>Inflation</i>	8.27	6.64	9.67	9.84	9.98	9.99	7.02	7.36	7.62
Non-food index	147.84	161.88	171.61	174.20	174.39	174.50	184.96	185.04	185.10
<i>Inflation</i>	9.16	9.50	6.01	5.99	5.88	5.83	6.18	6.11	6.07

Fig-1: Annual Inflation Rate

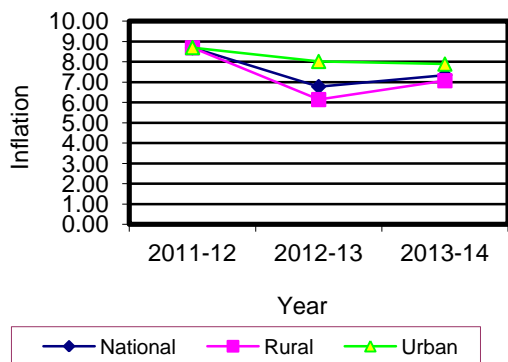


Fig-2: Monthly Inflation Rate

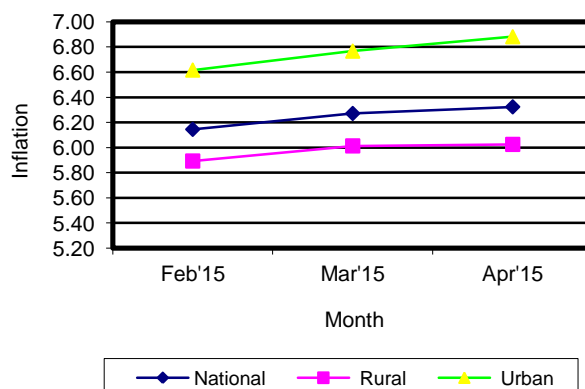


Table 2. Consumer Price Index (CPI) : National

(On Monthly Basis)

(2005-06=100)

CPI Classification	2011-12	2012-13	2013-14	2013-14			2014-15		
				Feb'14	Mar'14	April'14	Feb'15	Mar'15	April'15
General	170.19	181.73	195.08	198.54	198.84	198.93	210.74	211.31	211.51
	<i>8.69</i>	<i>6.78</i>	<i>7.35</i>	<i>0.20</i>	<i>0.15</i>	<i>0.04</i>	<i>0.30</i>	<i>0.27</i>	<i>0.09</i>
1. Food , beverage & tobacco	183.65	193.24	209.79	214.17	214.45	214.50	227.25	228.12	228.39
	<i>7.73</i>	<i>5.22</i>	<i>8.56</i>	<i>0.24</i>	<i>0.13</i>	<i>0.02</i>	<i>0.28</i>	<i>0.38</i>	<i>0.12</i>
2. Non-food	152.94	166.97	176.23	178.51	178.82	178.97	189.58	189.77	189.86
	<i>10.21</i>	<i>9.17</i>	<i>5.55</i>	<i>0.14</i>	<i>0.17</i>	<i>0.08</i>	<i>0.32</i>	<i>0.10</i>	<i>0.05</i>
I. Clothing & footwear	160.79	179.66	194.77	198.79	198.87	199.33	212.15	212.25	212.31
	<i>14.78</i>	<i>11.74</i>	<i>8.41</i>	<i>0.21</i>	<i>0.04</i>	<i>0.23</i>	<i>0.52</i>	<i>0.05</i>	<i>0.03</i>
II. Gross rent, fuel & lighting	143.36	155.61	163.47	166.62	166.88	167.01	173.12	173.18	173.23
	<i>8.34</i>	<i>8.54</i>	<i>5.05</i>	<i>0.05</i>	<i>0.16</i>	<i>0.08</i>	<i>0.10</i>	<i>0.03</i>	<i>0.03</i>
III. Furniture, furnishing, household equipments & operation	175.58	195.33	206.14	208.03	208.36	207.34	216.77	217.79	218.02
	<i>11.04</i>	<i>11.25</i>	<i>5.53</i>	<i>0.30</i>	<i>0.16</i>	<i>-0.49</i>	<i>0.59</i>	<i>0.47</i>	<i>0.11</i>
IV. Medical care & health expenditure	152.63	159.66	164.06	165.41	165.50	165.69	191.52	191.62	191.69
	<i>5.59</i>	<i>4.61</i>	<i>2.76</i>	<i>0.10</i>	<i>0.05</i>	<i>0.11</i>	<i>1.06</i>	<i>0.05</i>	<i>0.04</i>
V. Transport & communication	148.58	159.34	167.20	168.11	168.52	169.19	185.54	185.75	185.88
	<i>16.59</i>	<i>7.24</i>	<i>4.93</i>	<i>0.20</i>	<i>0.24</i>	<i>0.40</i>	<i>0.23</i>	<i>0.11</i>	<i>0.07</i>
VI. Recreation, entertainment, education & cultural services	144.48	157.23	164.38	164.72	165.55	165.62	168.71	168.77	168.80
	<i>3.56</i>	<i>8.82</i>	<i>4.55</i>	<i>0.10</i>	<i>0.50</i>	<i>0.04</i>	<i>0.04</i>	<i>0.04</i>	<i>0.02</i>
VII. Misc. goods & services	164.57	182.54	193.75	195.17	195.53	195.91	207.35	207.47	207.56
	<i>10.69</i>	<i>10.92</i>	<i>6.14</i>	<i>0.08</i>	<i>0.18</i>	<i>0.19</i>	<i>0.01</i>	<i>0.06</i>	<i>0.04</i>

Note : Figures in italics indicate inflation over previous year/month

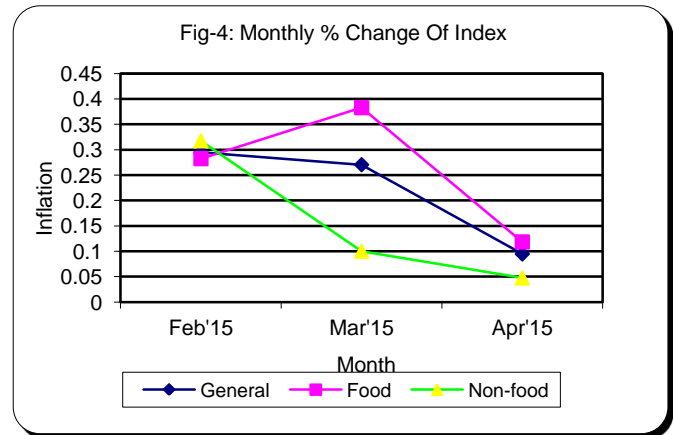
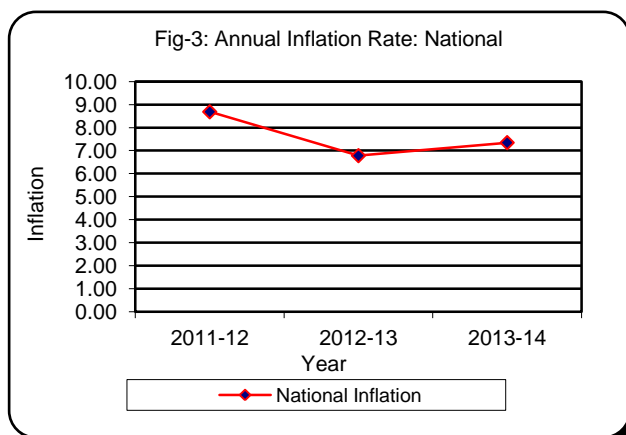


Table 3. Consumer Price Index (CPI) : Rural

(On Monthly Basis)

(2005-06=100)

CPI Classification	2011-12	2012-13	2013-14	2013-14			2014-15		
				Feb'14	Mar'14	April'14	Feb'15	Mar'15	April'15
General	173.26	183.90	196.90	200.40	200.72	200.82	212.21	212.79	212.92
	<i>8.69</i>	<i>6.14</i>	<i>7.07</i>	<i>0.24</i>	<i>0.16</i>	<i>0.05</i>	<i>0.31</i>	<i>0.27</i>	<i>0.06</i>
1. Food , beverage & tobacco	183.62	192.14	207.72	212.12	212.39	212.44	224.25	225.03	225.17
	<i>7.50</i>	<i>4.64</i>	<i>8.11</i>	<i>0.30</i>	<i>0.13</i>	<i>0.02</i>	<i>0.23</i>	<i>0.35</i>	<i>0.06</i>
2. Non-food	156.77	170.79	179.69	181.74	182.15	182.32	193.04	193.32	193.42
	<i>10.96</i>	<i>8.94</i>	<i>5.21</i>	<i>0.09</i>	<i>0.23</i>	<i>0.10</i>	<i>0.45</i>	<i>0.15</i>	<i>0.05</i>
I. Clothing & footwear	164.55	184.54	200.61	205.62	205.70	206.12	218.14	218.21	218.28
	<i>14.66</i>	<i>12.15</i>	<i>8.71</i>	<i>0.03</i>	<i>0.04</i>	<i>0.20</i>	<i>0.64</i>	<i>0.03</i>	<i>0.03</i>
II. Gross rent, fuel & lighting	146.37	157.40	164.05	166.00	166.46	166.64	172.57	172.66	172.73
	<i>9.17</i>	<i>7.54</i>	<i>4.22</i>	<i>0.08</i>	<i>0.28</i>	<i>0.11</i>	<i>0.13</i>	<i>0.05</i>	<i>0.04</i>
III. Furniture, furnishing, household equipments & operation	169.35	186.40	197.62	199.37	199.83	199.06	211.91	213.48	213.79
	<i>9.10</i>	<i>10.07</i>	<i>6.02</i>	<i>0.22</i>	<i>0.23</i>	<i>-0.39</i>	<i>0.86</i>	<i>0.74</i>	<i>0.15</i>
IV. Medical care & health expenditure	156.87	164.63	168.87	170.55	170.59	170.75	200.32	200.40	200.42
	<i>6.48</i>	<i>4.95</i>	<i>2.58</i>	<i>0.08</i>	<i>0.02</i>	<i>0.09</i>	<i>1.58</i>	<i>0.04</i>	<i>0.01</i>
V. Transport & communication	150.60	160.98	166.01	166.47	166.73	167.33	175.52	175.75	175.88
	<i>20.12</i>	<i>6.89</i>	<i>3.12</i>	<i>0.17</i>	<i>0.16</i>	<i>0.36</i>	<i>0.28</i>	<i>0.13</i>	<i>0.07</i>
VI. Recreation, entertainment, education & cultural services	158.26	174.07	179.72	179.64	181.03	181.12	184.58	184.64	184.66
	<i>4.73</i>	<i>9.99</i>	<i>3.25</i>	<i>0.08</i>	<i>0.77</i>	<i>0.05</i>	<i>0.03</i>	<i>0.03</i>	<i>0.01</i>
VII. Misc. goods & services	168.84	187.05	199.74	201.32	201.67	202.18	216.87	216.99	217.06
	<i>12.43</i>	<i>10.79</i>	<i>6.78</i>	<i>0.07</i>	<i>0.17</i>	<i>0.25</i>	<i>-0.02</i>	<i>0.06</i>	<i>0.03</i>

Note : Figures in italics indicate inflation over previous year/month

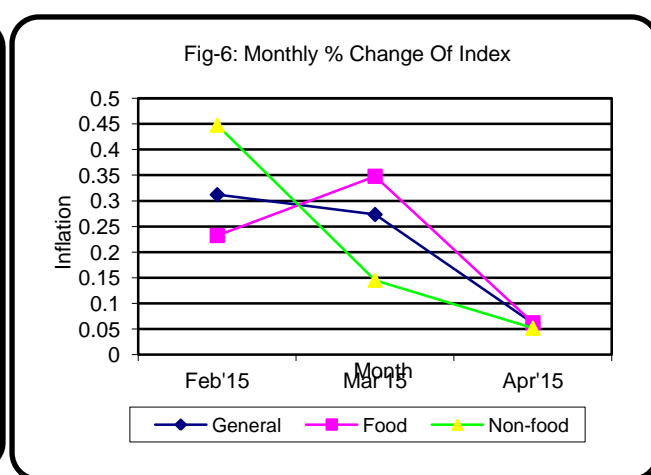
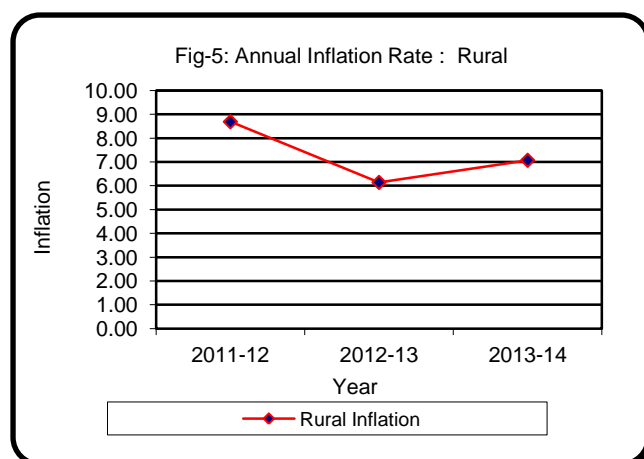


Table 4. Consumer Price Index (CPI) : Urban

(On Monthly Basis)

(2005-06=100)

CPI Classification	2011-12	2012-13	2013-14	2013-14			2014-15		
				Feb'14	Mar'14	April'14	Feb'15	Mar'15	April'15
General	164.52	177.71	191.73	195.12	195.36	196.45	208.03	208.58	208.90
	<i>8.69</i>	<i>8.02</i>	<i>7.89</i>	<i>0.14</i>	<i>0.12</i>	<i>0.04</i>	<i>0.27</i>	<i>0.26</i>	<i>0.15</i>
1. Food , beverage & tobacco	183.71	195.91	214.85	219.17	219.48	219.53	234.56	235.64	236.26
	<i>8.27</i>	<i>6.64</i>	<i>9.67</i>	<i>0.09</i>	<i>0.14</i>	<i>0.02</i>	<i>0.40</i>	<i>0.46</i>	<i>0.26</i>
2. Non-food	147.84	161.88	171.61	174.20	174.39	174.50	184.96	185.04	185.10
	<i>9.16</i>	<i>9.50</i>	<i>6.01</i>	<i>0.20</i>	<i>0.11</i>	<i>0.06</i>	<i>0.13</i>	<i>0.04</i>	<i>0.03</i>
I. Clothing & footwear	153.65	170.39	183.66	185.81	185.91	186.44	200.79	200.92	200.96
	<i>15.02</i>	<i>10.89</i>	<i>7.79</i>	<i>0.56</i>	<i>0.05</i>	<i>0.29</i>	<i>0.28</i>	<i>0.06</i>	<i>0.02</i>
II. Gross rent, fuel & lighting	139.88	153.55	162.80	167.33	167.38	167.43	173.76	173.79	173.80
	<i>7.35</i>	<i>9.77</i>	<i>6.02</i>	<i>0.02</i>	<i>0.03</i>	<i>0.03</i>	<i>0.07</i>	<i>0.02</i>	<i>0.01</i>
III. Furniture, furnishing, household equipments & operation	186.54	211.03	221.11	223.26	223.37	221.92	225.33	225.38	225.45
	<i>14.26</i>	<i>13.13</i>	<i>4.78</i>	<i>0.44</i>	<i>0.05</i>	<i>-0.65</i>	<i>0.18</i>	<i>0.02</i>	<i>0.03</i>
IV. Medical care & health expenditure	145.37	151.15	155.82	156.61	156.77	157.04	176.46	176.58	176.74
	<i>3.98</i>	<i>3.98</i>	<i>3.09</i>	<i>0.15</i>	<i>0.10</i>	<i>0.17</i>	<i>0.06</i>	<i>0.07</i>	<i>0.09</i>
V. Transport & communication	146.34	157.53	168.52	169.93	170.49	171.25	196.58	196.77	196.89
	<i>12.81</i>	<i>7.65</i>	<i>6.98</i>	<i>0.24</i>	<i>0.33</i>	<i>0.45</i>	<i>0.19</i>	<i>0.10</i>	<i>0.06</i>
VI. Recreation, entertainment, education & cultural services	129.61	139.06	147.83	148.61	148.84	148.89	151.58	151.64	151.68
	<i>2.05</i>	<i>7.29</i>	<i>6.31</i>	<i>0.12</i>	<i>0.15</i>	<i>0.03</i>	<i>0.07</i>	<i>0.04</i>	<i>0.03</i>
VII. Misc. goods & services	159.31	176.96	186.37	187.57	187.95	188.16	195.60	195.70	195.84
	<i>8.50</i>	<i>11.08</i>	<i>5.32</i>	<i>0.09</i>	<i>0.20</i>	<i>0.11</i>	<i>0.06</i>	<i>0.05</i>	<i>0.07</i>

Note : Figures in italics indicate inflation over previous year/month

