

**Table 1. Consumer Price Index (CPI) And Inflation Rate  
(Point To Point)**

(2005-06=100)

CPI Classification	2011-12	2012-13	2013-14	2013-14			2014-15		
				Oct'13	Nov'13	Dec'13	Oct'14	Nov'14	Dec'14
<b>NATIONAL</b>									
General index	170.19	181.73	195.08	194.01	194.76	195.82	206.81	206.86	207.78
<i>Inflation</i>	8.69	6.78	7.35	7.03	7.15	7.35	6.60	6.21	6.11
Food index	183.65	193.24	209.79	209.25	210.27	211.87	224.23	223.81	224.29
<i>Inflation</i>	7.72	5.22	8.56	8.38	8.55	9.00	7.16	6.44	5.86
Non-food index	152.94	166.97	176.23	174.46	174.92	175.26	184.47	185.14	186.62
<i>Inflation</i>	10.21	9.17	5.55	5.02	5.08	4.88	5.74	5.84	6.48
<b>RURAL</b>									
General index	173.26	183.90	196.90	195.70	196.43	197.55	208.41	208.32	209.19
<i>Inflation</i>	8.69	6.14	7.07	6.78	6.92	7.22	6.49	6.05	5.89
Food index	183.62	192.14	207.72	206.89	207.74	209.37	221.59	221.00	221.47
<i>Inflation</i>	7.50	4.64	8.11	7.86	8.06	8.63	7.11	6.38	5.78
Non-food index	156.77	170.79	179.69	177.91	178.43	178.72	187.45	188.15	189.66
<i>Inflation</i>	10.96	8.94	5.21	4.84	4.88	4.69	5.36	5.45	6.12
<b>URBAN</b>									
General index	164.52	177.71	191.73	190.88	191.69	192.64	203.84	204.16	205.17
<i>Inflation</i>	8.70	8.02	7.89	7.52	7.58	7.58	6.79	6.51	6.50
Food index	183.71	195.91	214.85	215.03	216.34	217.94	230.66	230.65	231.16
<i>Inflation</i>	8.27	6.64	9.67	9.64	9.67	9.89	7.27	6.61	6.07
Non-food index	147.84	161.88	171.61	169.87	170.24	170.64	180.51	181.12	182.57
<i>Inflation</i>	9.16	9.50	6.01	5.28	5.35	5.13	6.26	6.39	6.99

Fig-1: Annual Inflation Rate

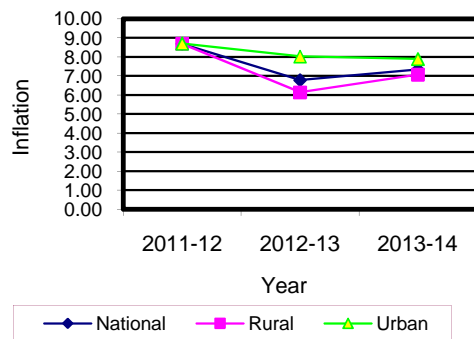
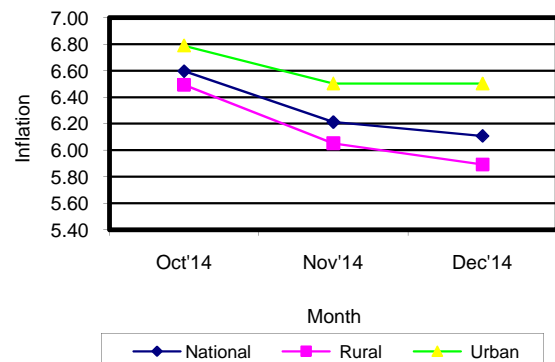


Fig-2: Monthly Inflation Rate



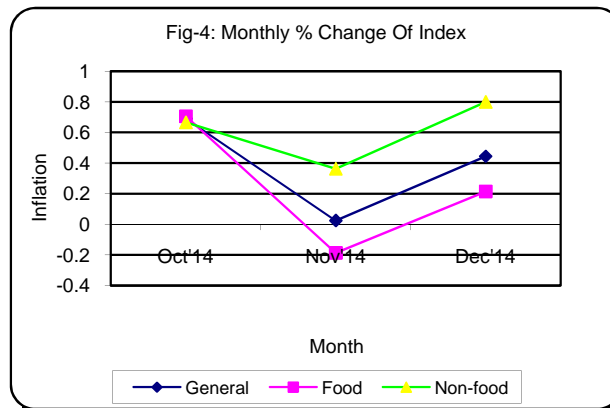
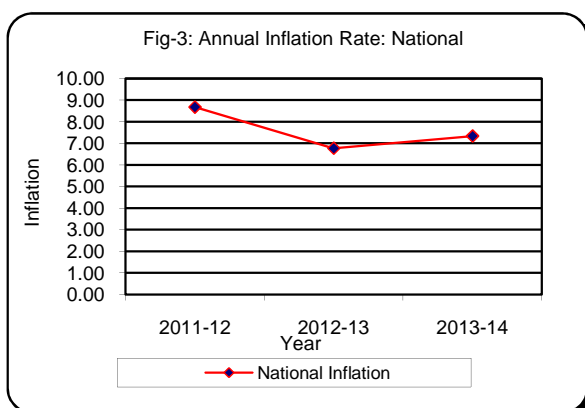
## Table 2. Consumer Price Index (CPI) : National

(On Monthly Basis)

(2005-06=100)

CPI Classification	2011-12	2012-13	2013-14	2013-14			2014-15		
				Oct'13	Nov'13	Dec'13	Oct'14	Nov'14	Dec'14
<b>General</b>	170.19	181.73	195.08	194.01	194.76	195.82	206.81	206.86	207.78
	<i>8.69</i>	<i>6.78</i>	<i>7.35</i>	<i>0.92</i>	<i>0.39</i>	<i>0.54</i>	<i>0.69</i>	<i>0.02</i>	<i>0.44</i>
<b>1. Food, beverage &amp; tobacco</b>	183.65	193.24	209.79	209.25	210.24	211.87	224.23	223.81	224.29
	<i>7.73</i>	<i>5.22</i>	<i>8.56</i>	<i>1.15</i>	<i>0.47</i>	<i>0.78</i>	<i>0.71</i>	<i>-0.19</i>	<i>0.21</i>
<b>2. Non-food</b>	152.94	166.97	176.23	174.46	174.92	175.26	184.47	185.14	186.62
	<i>10.21</i>	<i>9.17</i>	<i>5.55</i>	<i>0.56</i>	<i>0.26</i>	<i>0.19</i>	<i>0.67</i>	<i>0.36</i>	<i>0.80</i>
<b>I. Clothing &amp; footwear</b>	160.79	179.66	194.77	191.85	192.85	193.56	206.93	207.47	208.95
	<i>14.78</i>	<i>11.74</i>	<i>8.41</i>	<i>0.88</i>	<i>0.52</i>	<i>0.37</i>	<i>0.27</i>	<i>0.26</i>	<i>0.71</i>
<b>II. Gross rent, fuel &amp; lighting</b>	143.36	155.61	163.47	160.52	160.94	161.10	170.73	170.94	171.48
	<i>8.34</i>	<i>8.54</i>	<i>5.05</i>	<i>0.63</i>	<i>0.26</i>	<i>0.10</i>	<i>0.18</i>	<i>0.12</i>	<i>0.32</i>
<b>III. Furniture, furnishing, household equipments &amp; operation</b>	175.58	195.33	206.14	205.24	205.67	206.32	211.88	212.29	214.04
	<i>11.04</i>	<i>11.25</i>	<i>5.53</i>	<i>0.15</i>	<i>0.21</i>	<i>0.32</i>	<i>0.67</i>	<i>0.19</i>	<i>0.82</i>
<b>IV. Medical care &amp; health expenses</b>	152.63	159.66	164.06	163.15	163.55	163.94	171.51	175.57	177.15
	<i>5.59</i>	<i>4.61</i>	<i>2.76</i>	<i>0.64</i>	<i>0.25</i>	<i>0.24</i>	<i>2.21</i>	<i>2.37</i>	<i>0.90</i>
<b>V. Transport &amp; communication</b>	148.58	159.34	167.20	166.28	166.77	167.15	179.58	180.36	183.90
	<i>16.59</i>	<i>7.24</i>	<i>4.93</i>	<i>0.16</i>	<i>0.29</i>	<i>0.23</i>	<i>1.13</i>	<i>0.43</i>	<i>1.96</i>
<b>VI. Recreation, entertainment, education &amp; cultural services</b>	144.48	157.23	164.38	164.29	164.33	164.38	167.48	167.61	168.31
	<i>3.56</i>	<i>8.82</i>	<i>4.55</i>	<i>0.58</i>	<i>0.02</i>	<i>0.03</i>	<i>0.30</i>	<i>0.08</i>	<i>0.42</i>
<b>VII. Misc. goods &amp; services</b>	164.57	182.54	193.75	193.70	193.82	194.02	202.15	202.43	204.94
	<i>10.69</i>	<i>10.92</i>	<i>6.14</i>	<i>0.84</i>	<i>0.06</i>	<i>0.10</i>	<i>1.57</i>	<i>0.14</i>	<i>1.24</i>

**Note :** Figures in italics indicate inflation over previous year/month



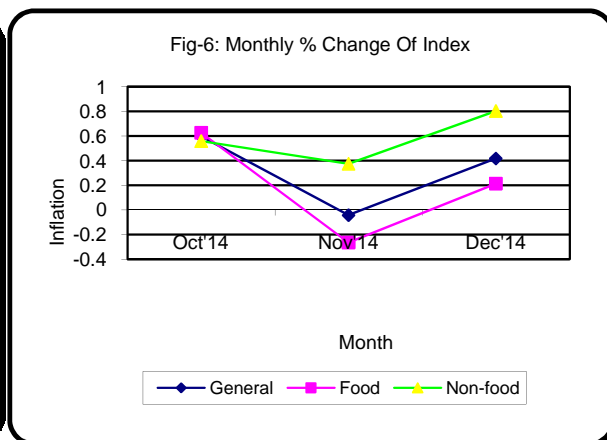
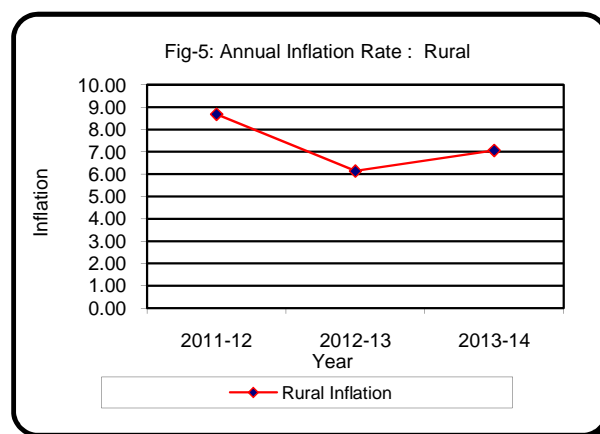
### Table 3. Consumer Price Index (CPI) : Rural

(On Monthly Basis)

(2005-06=100)

CPI Classification	2011-12	2012-13	2013-14	2013-14			2014-15		
				Oct'13	Nov'13	Dec'13	Oct'14	Nov'14	Dec'14
<b>General</b>	173.26	183.90	196.90	195.70	196.43	197.55	208.41	208.32	209.19
	<i>8.69</i>	<i>6.14</i>	<i>7.07</i>	<i>0.84</i>	<i>0.37</i>	<i>0.57</i>	<i>0.60</i>	<i>-0.04</i>	<i>0.42</i>
1. <b>Food</b> , beverage & tobacco	183.62	192.14	207.72	206.89	207.74	209.37	221.59	221.00	221.47
	<i>7.50</i>	<i>4.64</i>	<i>8.11</i>	<i>1.02</i>	<i>0.41</i>	<i>0.78</i>	<i>0.63</i>	<i>-0.27</i>	<i>0.21</i>
2. <b>Non-food</b>	156.77	170.79	179.69	177.91	178.43	178.72	187.45	188.15	189.66
	<i>10.96</i>	<i>8.94</i>	<i>5.21</i>	<i>0.51</i>	<i>0.29</i>	<i>0.16</i>	<i>0.56</i>	<i>0.37</i>	<i>0.80</i>
I. Clothing & footwear	164.55	184.54	200.61	196.82	197.89	198.51	212.98	213.58	215.30
	<i>14.66</i>	<i>12.15</i>	<i>8.71</i>	<i>0.95</i>	<i>0.54</i>	<i>0.31</i>	<i>0.24</i>	<i>0.28</i>	<i>0.81</i>
II. Gross rent, fuel & lighting	146.37	157.40	164.05	161.74	162.43	162.57	170.29	170.59	171.49
	<i>9.17</i>	<i>7.54</i>	<i>4.22</i>	<i>0.27</i>	<i>0.43</i>	<i>0.09</i>	<i>0.27</i>	<i>0.18</i>	<i>0.53</i>
III. Furniture, furnishing, household equipments & operation	169.35	186.40	197.62	196.69	196.89	197.66	206.16	206.51	208.26
	<i>9.10</i>	<i>10.07</i>	<i>6.02</i>	<i>0.19</i>	<i>0.10</i>	<i>0.39</i>	<i>0.36</i>	<i>0.17</i>	<i>0.85</i>
IV. Medical care & health expenses	156.87	164.63	168.87	167.69	168.19	168.48	175.95	179.92	181.49
	<i>6.48</i>	<i>4.95</i>	<i>2.58</i>	<i>0.90</i>	<i>0.30</i>	<i>0.17</i>	<i>2.15</i>	<i>2.26</i>	<i>0.87</i>
V. Transport & communication	150.60	160.98	166.01	165.21	165.46	165.54	173.28	173.77	174.59
	<i>20.12</i>	<i>6.89</i>	<i>3.12</i>	<i>0.19</i>	<i>0.15</i>	<i>0.05</i>	<i>0.30</i>	<i>0.28</i>	<i>0.47</i>
VI. Recreation, entertainment, education & cultural services	158.26	174.07	179.72	179.14	179.18	179.24	183.14	183.32	184.39
	<i>4.73</i>	<i>9.99</i>	<i>3.25</i>	<i>0.16</i>	<i>0.02</i>	<i>0.03</i>	<i>0.32</i>	<i>0.10</i>	<i>0.58</i>
VII. Misc. goods & services	168.84	187.05	199.74	199.70	199.82	199.92	208.32	208.76	213.19
	<i>12.43</i>	<i>10.79</i>	<i>6.78</i>	<i>1.13</i>	<i>0.06</i>	<i>0.05</i>	<i>1.53</i>	<i>0.21</i>	<i>2.12</i>

**Note :** Figures in italics indicate inflation over previous year/month



### Table 4. Consumer Price Index (CPI) : Urban

(On Monthly Basis)

(2005-06=100)

CPI Classification	2011-12	2012-13	2013-14	2013-14			2014-15		
				Oct'13	Nov'13	Dec'13	Oct'14	Nov'14	Dec'14
<b>General</b>	164.52	177.71	191.73	190.88	191.69	192.64	203.84	204.16	205.17
	<i>8.69</i>	<i>8.02</i>	<i>7.89</i>	<i>1.07</i>	<i>0.42</i>	<i>0.50</i>	<i>0.86</i>	<i>0.16</i>	<i>0.49</i>
1. <b>Food</b> , beverage & tobacco	183.71	195.91	214.85	215.03	216.34	217.94	230.66	230.65	231.16
	<i>8.27</i>	<i>6.64</i>	<i>9.67</i>	<i>1.46</i>	<i>0.61</i>	<i>0.74</i>	<i>0.88</i>	<i>0.00</i>	<i>0.22</i>
2. <b>Non-food</b>	147.84	161.88	171.61	169.87	170.24	170.64	180.51	181.12	182.57
	<i>9.16</i>	<i>9.50</i>	<i>6.01</i>	<i>0.65</i>	<i>0.22</i>	<i>0.23</i>	<i>0.83</i>	<i>0.34</i>	<i>0.80</i>
I. Clothing & footwear	153.65	170.39	183.66	182.39	183.29	184.16	195.45	195.87	196.88
	<i>15.02</i>	<i>10.89</i>	<i>7.79</i>	<i>0.72</i>	<i>0.49</i>	<i>0.47</i>	<i>0.33</i>	<i>0.21</i>	<i>0.52</i>
II. Gross rent, fuel & lighting	139.88	153.55	162.80	159.10	159.21	159.39	171.24	171.36	171.48
	<i>7.35</i>	<i>9.77</i>	<i>6.02</i>	<i>1.04</i>	<i>0.07</i>	<i>0.11</i>	<i>0.06</i>	<i>0.07</i>	<i>0.07</i>
III. Furniture, furnishing, household equipments & operation	186.54	211.03	221.11	220.26	221.11	221.55	221.93	222.44	224.22
	<i>14.26</i>	<i>13.13</i>	<i>4.78</i>	<i>0.09</i>	<i>0.39</i>	<i>0.20</i>	<i>1.19</i>	<i>0.23</i>	<i>0.80</i>
IV. Medical care & health expenditure	145.37	151.15	155.82	155.39	155.62	156.16	163.91	168.12	169.72
	<i>3.98</i>	<i>3.98</i>	<i>3.09</i>	<i>0.19</i>	<i>0.15</i>	<i>0.35</i>	<i>2.32</i>	<i>2.57</i>	<i>0.95</i>
V. Transport & communication	146.34	157.53	168.52	167.46	168.22	168.93	186.53	187.63	194.16
	<i>12.81</i>	<i>7.65</i>	<i>6.98</i>	<i>0.11</i>	<i>0.45</i>	<i>0.42</i>	<i>1.99</i>	<i>0.59</i>	<i>3.48</i>
VI. Recreation, entertainment, education & cultural services	129.61	139.06	147.83	148.27	148.30	148.35	150.58	150.66	150.96
	<i>2.05</i>	<i>7.29</i>	<i>6.31</i>	<i>1.12</i>	<i>0.02</i>	<i>0.03</i>	<i>0.27</i>	<i>0.05</i>	<i>0.20</i>
VII. Misc. goods & services	159.31	176.96	186.37	186.31	186.42	186.75	194.53	194.63	194.75
	<i>8.50</i>	<i>11.08</i>	<i>5.32</i>	<i>0.47</i>	<i>0.06</i>	<i>0.18</i>	<i>1.62</i>	<i>0.05</i>	<i>0.06</i>

**Note :** Figures in italics indicate inflation over previous year/month

