

**Table 1. Consumer Price Index (CPI) And Inflation Rate (Point To Point)**

(2005-06=100)

CPI Classification	2011-12	2012-13	2013-14	2013-14			2014-15		
				Nov'13	Dec'13	Jan'14	Nov'14	Dec'14	Jan'15
<b>NATIONAL</b>									
General index	170.19	181.73	195.08	194.76	195.82	198.15	206.86	207.78	210.12
<i>Inflation</i>	8.69	6.78	7.35	7.15	7.35	7.50	6.21	6.11	6.04
Food index	183.65	193.24	209.79	210.27	211.87	213.65	223.81	224.29	226.61
<i>Inflation</i>	7.72	5.22	8.56	8.55	9.00	8.81	6.44	5.86	6.07
Non-food index	152.94	166.97	176.23	174.92	175.26	178.26	185.14	186.62	188.98
<i>Inflation</i>	10.21	9.17	5.55	5.08	4.88	5.53	5.84	6.48	6.01
<b>RURAL</b>									
General index	173.26	183.90	196.90	196.43	197.55	199.93	208.32	209.19	211.55
<i>Inflation</i>	8.69	6.14	7.07	6.92	7.22	7.24	6.05	5.89	5.81
Food index	183.62	192.14	207.72	207.74	209.37	211.48	221.00	221.47	223.73
<i>Inflation</i>	7.50	4.64	8.11	8.06	8.63	8.39	6.38	5.78	5.79
Non-food index	156.77	170.79	179.69	178.43	178.72	181.57	188.15	189.66	192.18
<i>Inflation</i>	10.96	8.94	5.21	4.88	4.69	5.17	5.45	6.12	5.84
<b>URBAN</b>									
General index	164.52	177.71	191.73	191.69	192.64	194.84	204.16	205.17	207.47
<i>Inflation</i>	8.70	8.02	7.89	7.58	7.58	7.97	6.51	6.50	6.48
Food index	183.71	195.91	214.85	216.34	217.94	218.97	230.65	231.16	233.62
<i>Inflation</i>	8.27	6.64	9.67	9.67	9.89	9.80	6.61	6.07	6.69
Non-food index	147.84	161.88	171.61	170.24	170.64	173.85	181.12	182.57	184.72
<i>Inflation</i>	9.16	9.50	6.01	5.35	5.13	6.04	6.39	6.99	6.25

Fig-1: Annual Inflation Rate

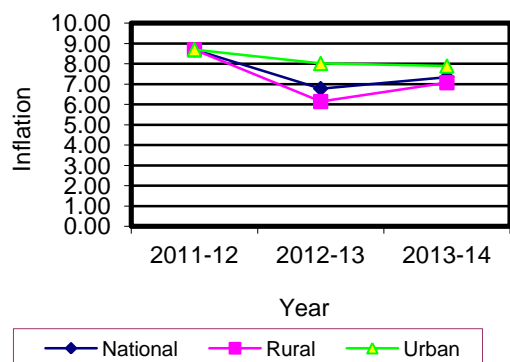
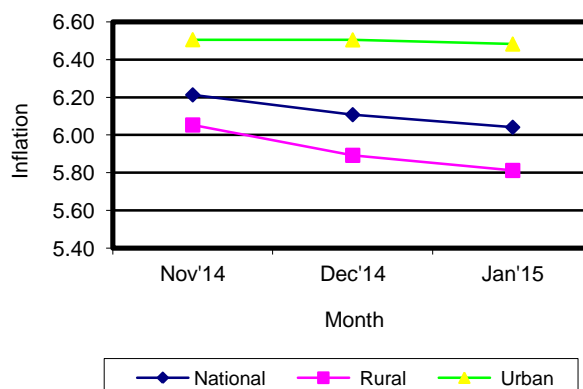


Fig-2: Monthly Inflation Rate



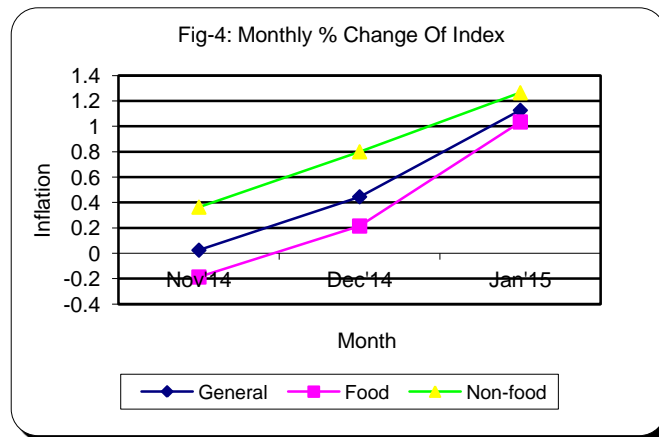
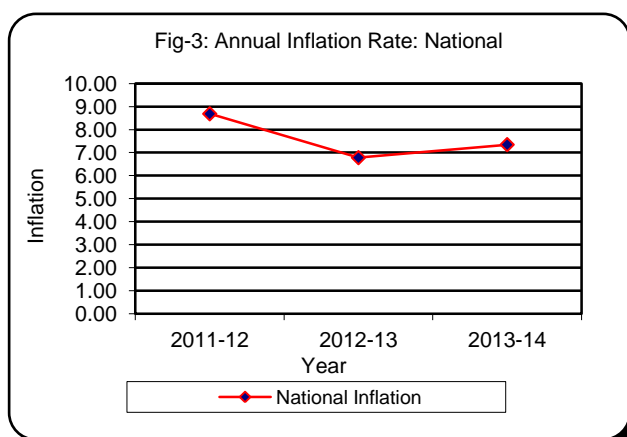
## Table 2. Consumer Price Index (CPI) : National

(On Monthly Basis)

(2005-06=100)

CPI Classification	2011-12	2012-13	2013-14	2013-14			2014-15		
				Nov'13	Dec'13	Jan'14	Nov'14	Dec'14	Jan'15
<b>General</b>	170.19	181.73	195.08	194.76	195.82	198.15	206.86	207.78	210.12
	<i>8.69</i>	<i>6.78</i>	<i>7.35</i>	<i>0.39</i>	<i>0.54</i>	<i>1.19</i>	<i>0.02</i>	<i>0.44</i>	<i>1.13</i>
1. <b>Food</b> , beverage & tobacco	183.65	193.24	209.79	210.24	211.87	213.65	223.81	224.29	226.61
	<i>7.73</i>	<i>5.22</i>	<i>8.56</i>	<i>0.47</i>	<i>0.78</i>	<i>0.84</i>	<i>-0.19</i>	<i>0.21</i>	<i>1.03</i>
2. <b>Non-food</b>	152.94	166.97	176.23	174.92	175.26	178.26	185.14	186.62	188.98
	<i>10.21</i>	<i>9.17</i>	<i>5.55</i>	<i>0.26</i>	<i>0.19</i>	<i>1.71</i>	<i>0.36</i>	<i>0.80</i>	<i>1.26</i>
I. Clothing & footwear	160.79	179.66	194.77	192.85	193.56	198.38	207.47	208.95	211.06
	<i>14.78</i>	<i>11.74</i>	<i>8.41</i>	<i>0.52</i>	<i>0.37</i>	<i>2.49</i>	<i>0.26</i>	<i>0.71</i>	<i>1.01</i>
II. Gross rent, fuel & lighting	143.36	155.61	163.47	160.94	161.10	166.53	170.94	171.48	172.95
	<i>8.34</i>	<i>8.54</i>	<i>5.05</i>	<i>0.26</i>	<i>0.10</i>	<i>3.37</i>	<i>0.12</i>	<i>0.32</i>	<i>0.86</i>
III. Furniture, furnishing, household equipments & operation	175.58	195.33	206.14	205.67	206.32	207.40	212.29	214.04	215.49
	<i>11.04</i>	<i>11.25</i>	<i>5.53</i>	<i>0.21</i>	<i>0.32</i>	<i>0.52</i>	<i>0.19</i>	<i>0.82</i>	<i>0.68</i>
IV. Medical care & health expenditure	152.63	159.66	164.06	163.55	163.94	165.24	175.57	177.15	189.51
	<i>5.59</i>	<i>4.61</i>	<i>2.76</i>	<i>0.25</i>	<i>0.24</i>	<i>0.79</i>	<i>2.37</i>	<i>0.90</i>	<i>6.98</i>
V. Transport & communication	148.58	159.34	167.20	166.77	167.15	167.78	180.36	183.90	185.11
	<i>16.59</i>	<i>7.24</i>	<i>4.93</i>	<i>0.29</i>	<i>0.23</i>	<i>0.38</i>	<i>0.43</i>	<i>1.96</i>	<i>0.66</i>
VI. Recreation, entertainment, education & cultural services	144.48	157.23	164.38	164.33	164.38	164.55	167.61	168.31	168.64
	<i>3.56</i>	<i>8.82</i>	<i>4.55</i>	<i>0.02</i>	<i>0.03</i>	<i>0.10</i>	<i>0.08</i>	<i>0.42</i>	<i>0.20</i>
VII. Misc. goods & services	164.57	182.54	193.75	193.82	194.02	195.01	202.43	204.94	207.33
	<i>10.69</i>	<i>10.92</i>	<i>6.14</i>	<i>0.06</i>	<i>0.10</i>	<i>0.51</i>	<i>0.14</i>	<i>1.24</i>	<i>1.17</i>

**Note :** Figures in italics indicate inflation over previous year/month



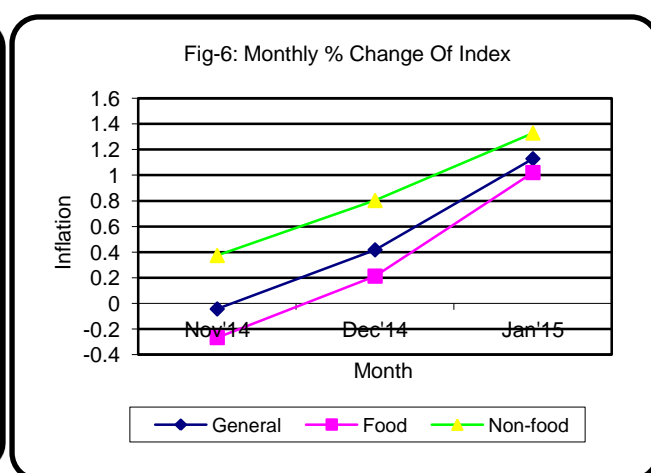
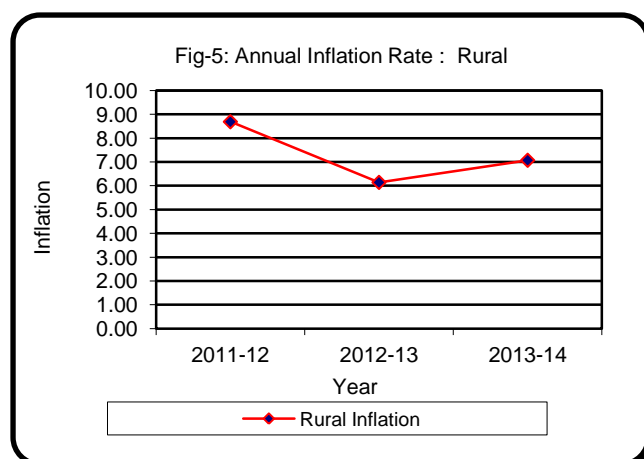
### Table 3. Consumer Price Index (CPI) : Rural

(On Monthly Basis)

(2005-06=100)

CPI Classification	2011-12	2012-13	2013-14	2013-14			2014-15		
				Nov'13	Dec'13	Jan'14	Nov'14	Dec'14	Jan'15
<b>General</b>	173.26	183.90	196.90	196.43	197.55	199.93	208.32	209.19	211.55
	<i>8.69</i>	<i>6.14</i>	<i>7.07</i>	<i>0.37</i>	<i>0.57</i>	<i>1.20</i>	<i>-0.04</i>	<i>0.42</i>	<i>1.13</i>
1. <b>Food</b> , beverage & tobacco	183.62	192.14	207.72	207.74	209.37	211.48	221.00	221.47	223.73
	<i>7.50</i>	<i>4.64</i>	<i>8.11</i>	<i>0.41</i>	<i>0.78</i>	<i>1.01</i>	<i>-0.27</i>	<i>0.21</i>	<i>1.02</i>
2. <b>Non-food</b>	156.77	170.79	179.69	178.43	178.72	181.57	188.15	189.66	192.18
	<i>10.96</i>	<i>8.94</i>	<i>5.21</i>	<i>0.29</i>	<i>0.16</i>	<i>1.59</i>	<i>0.37</i>	<i>0.80</i>	<i>1.33</i>
I. Clothing & footwear	164.55	184.54	200.61	197.89	198.51	205.55	213.58	215.30	216.76
	<i>14.66</i>	<i>12.15</i>	<i>8.71</i>	<i>0.54</i>	<i>0.31</i>	<i>3.55</i>	<i>0.28</i>	<i>0.81</i>	<i>0.68</i>
II. Gross rent, fuel & lighting	146.37	157.40	164.05	162.43	162.57	165.87	170.59	171.49	172.35
	<i>9.17</i>	<i>7.54</i>	<i>4.22</i>	<i>0.43</i>	<i>0.09</i>	<i>2.03</i>	<i>0.18</i>	<i>0.53</i>	<i>0.50</i>
III. Furniture, furnishing, household equipments & operation	169.35	186.40	197.62	196.89	197.66	198.94	206.51	208.26	210.11
	<i>9.10</i>	<i>10.07</i>	<i>6.02</i>	<i>0.10</i>	<i>0.39</i>	<i>0.65</i>	<i>0.17</i>	<i>0.85</i>	<i>0.89</i>
IV. Medical care & health expenditure	156.87	164.63	168.87	168.19	168.48	170.42	179.92	181.49	197.21
	<i>6.48</i>	<i>4.95</i>	<i>2.58</i>	<i>0.30</i>	<i>0.17</i>	<i>1.15</i>	<i>2.26</i>	<i>0.87</i>	<i>8.66</i>
V. Transport & communication	150.60	160.98	166.01	165.46	165.54	166.19	173.77	174.59	175.03
	<i>20.12</i>	<i>6.89</i>	<i>3.12</i>	<i>0.15</i>	<i>0.05</i>	<i>0.39</i>	<i>0.28</i>	<i>0.47</i>	<i>0.25</i>
VI. Recreation, entertainment, education & cultural services	158.26	174.07	179.72	179.18	179.24	179.50	183.32	184.39	184.53
	<i>4.73</i>	<i>9.99</i>	<i>3.25</i>	<i>0.02</i>	<i>0.03</i>	<i>0.15</i>	<i>0.10</i>	<i>0.58</i>	<i>0.08</i>
VII. Misc. goods & services	168.84	187.05	199.74	199.82	199.92	201.17	208.76	213.19	216.91
	<i>12.43</i>	<i>10.79</i>	<i>6.78</i>	<i>0.06</i>	<i>0.05</i>	<i>0.63</i>	<i>0.21</i>	<i>2.12</i>	<i>1.74</i>

**Note :** Figures in italics indicate inflation over previous year/month



## Table 4. Consumer Price Index (CPI) : Urban

(On Monthly Basis)

(2005-06=100)

CPI Classification	2011-12	2012-13	2013-14	2013-14			2014-15		
				Nov'13	Dec'13	Jan'14	Nov'14	Dec'14	Jan'15
<b>General</b>	164.52	177.71	191.73	191.69	192.64	194.84	204.16	205.17	207.47
	<i>8.69</i>	<i>8.02</i>	<i>7.89</i>	<i>0.42</i>	<i>0.50</i>	<i>1.14</i>	<i>0.16</i>	<i>0.49</i>	<i>1.12</i>
1. <b>Food</b> , beverage & tobacco	183.71	195.91	214.85	216.34	217.94	218.97	230.65	231.16	233.62
	<i>8.27</i>	<i>6.64</i>	<i>9.67</i>	<i>0.61</i>	<i>0.74</i>	<i>0.47</i>	<i>0.00</i>	<i>0.22</i>	<i>1.06</i>
2. <b>Non-food</b>	147.84	161.88	171.61	170.24	170.64	173.85	181.12	182.57	184.72
	<i>9.16</i>	<i>9.50</i>	<i>6.01</i>	<i>0.22</i>	<i>0.23</i>	<i>1.88</i>	<i>0.34</i>	<i>0.80</i>	<i>1.18</i>
I. Clothing & footwear	153.65	170.39	183.66	183.29	184.16	184.77	195.87	196.88	200.23
	<i>15.02</i>	<i>10.89</i>	<i>7.79</i>	<i>0.49</i>	<i>0.47</i>	<i>0.33</i>	<i>0.21</i>	<i>0.52</i>	<i>1.70</i>
II. Gross rent, fuel & lighting	139.88	153.55	162.80	159.21	159.39	167.29	171.36	171.48	173.64
	<i>7.35</i>	<i>9.77</i>	<i>6.02</i>	<i>0.07</i>	<i>0.11</i>	<i>4.96</i>	<i>0.07</i>	<i>0.07</i>	<i>1.26</i>
III. Furniture, furnishing, household equipments & operation	186.54	211.03	221.11	221.11	221.55	222.29	222.44	224.22	224.93
	<i>14.26</i>	<i>13.13</i>	<i>4.78</i>	<i>0.39</i>	<i>0.20</i>	<i>0.33</i>	<i>0.23</i>	<i>0.80</i>	<i>0.32</i>
IV. Medical care & health expenditure	145.37	151.15	155.82	155.62	156.16	156.37	168.12	169.72	176.35
	<i>3.98</i>	<i>3.98</i>	<i>3.09</i>	<i>0.15</i>	<i>0.35</i>	<i>0.13</i>	<i>2.57</i>	<i>0.95</i>	<i>3.91</i>
V. Transport & communication	146.34	157.53	168.52	168.22	168.93	169.53	187.63	194.16	196.21
	<i>12.81</i>	<i>7.65</i>	<i>6.98</i>	<i>0.45</i>	<i>0.42</i>	<i>0.36</i>	<i>0.59</i>	<i>3.48</i>	<i>1.06</i>
VI. Recreation, entertainment, education & cultural services	129.61	139.06	147.83	148.30	148.35	148.43	150.66	150.96	151.48
	<i>2.05</i>	<i>7.29</i>	<i>6.31</i>	<i>0.02</i>	<i>0.03</i>	<i>0.05</i>	<i>0.05</i>	<i>0.20</i>	<i>0.34</i>
VII. Misc. goods & services	159.31	176.96	186.37	186.42	186.75	187.40	194.63	194.75	195.49
	<i>8.50</i>	<i>11.08</i>	<i>5.32</i>	<i>0.06</i>	<i>0.18</i>	<i>0.35</i>	<i>0.05</i>	<i>0.06</i>	<i>0.38</i>

**Note :** Figures in italics indicate inflation over previous year/month

