

Month: June 2015

Table 1. Consumer Price Index (CPI) And Inflation Rate (Point To Point)

(2005-06=100)

CPI Classification	2012-13	2013-14	2014-15	2013-14			2014-15		
				April'14	May'14	June'14	April'15	May'15	June'15
NATIONAL									
General index	181.73	195.08	207.58	198.93	196.60	196.86	211.51	208.77	209.17
<i>Inflation</i>	6.78	7.35	6.41	7.46	7.48	6.97	6.32	6.19	6.25
Food index	193.24	209.79	223.80	214.50	210.27	210.15	228.39	223.36	223.43
<i>Inflation</i>	5.22	8.56	6.68	8.95	9.09	8.00	6.48	6.23	6.32
Non-food index	166.97	176.23	186.79	178.97	179.07	179.82	189.86	190.07	190.88
<i>Inflation</i>	9.17	5.55	5.99	5.23	5.16	5.45	6.08	6.14	6.15
RURAL									
General index	183.90	196.90	209.10	200.82	198.41	198.67	212.92	209.99	210.39
<i>Inflation</i>	6.14	7.07	6.20	7.19	7.27	6.73	6.03	5.84	5.90
Food index	192.14	207.72	221.02	212.44	208.48	208.31	225.17	220.29	220.31
<i>Inflation</i>	4.64	8.11	6.40	8.52	8.72	7.64	5.99	5.66	5.76
Non-food index	170.79	179.69	190.13	182.32	182.40	183.33	193.42	193.60	194.62
<i>Inflation</i>	8.94	5.21	5.81	4.81	4.71	5.12	6.09	6.14	6.16
URBAN									
General index	177.71	191.73	204.76	195.45	193.26	193.52	208.90	206.53	206.90
<i>Inflation</i>	8.02	7.89	6.80	7.96	7.92	7.42	6.88	6.87	6.91
Food index	195.91	214.85	230.56	219.53	214.66	214.64	236.26	230.85	231.04
<i>Inflation</i>	6.64	9.67	7.31	9.99	9.98	8.87	7.62	7.54	7.64
Non-food index	161.88	171.61	182.32	174.50	174.64	175.14	185.10	185.37	185.90
<i>Inflation</i>	9.50	6.01	6.24	5.83	5.79	5.91	6.07	6.14	6.14

Fig-1: Annual Inflation Rate

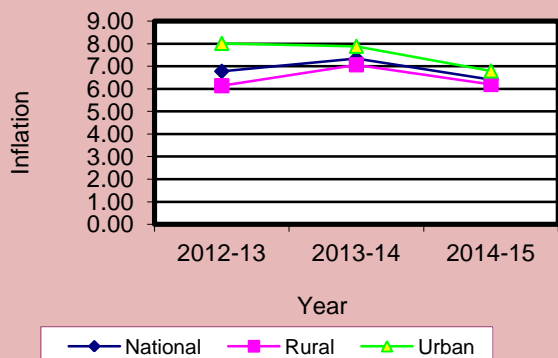


Fig-2: Monthly Inflation Rate

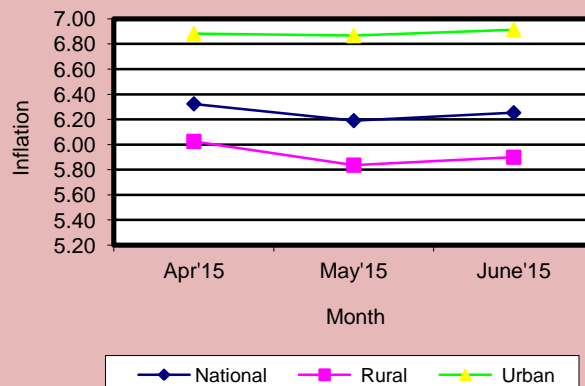


Table 2. Consumer Price Index (CPI) : National

CPI Classification	2012-13	2013-14	2014-15	2013-14			2014-15		
				April'14	May'14	June'14	April'15	May'15	June'15
General	181.73	195.08	207.58	198.93	196.60	196.86	211.51	208.77	209.17
	<i>6.78</i>	<i>7.35</i>	<i>6.41</i>	<i>0.04</i>	<i>-1.17</i>	<i>0.13</i>	<i>0.09</i>	<i>-1.30</i>	<i>0.19</i>
1. Food , beverage & tobacco	193.24	209.79	223.80	214.50	210.27	210.15	228.39	223.36	223.43
	<i>5.22</i>	<i>8.56</i>	<i>6.68</i>	<i>0.02</i>	<i>-1.97</i>	<i>-0.06</i>	<i>0.12</i>	<i>-2.20</i>	<i>0.03</i>
2. Non-food	166.97	176.23	186.79	178.97	179.07	179.82	189.86	190.07	190.88
	<i>9.17</i>	<i>5.55</i>	<i>5.99</i>	<i>0.08</i>	<i>0.06</i>	<i>0.42</i>	<i>0.05</i>	<i>0.11</i>	<i>0.43</i>
I. Clothing & footwear	179.66	194.77	208.50	199.33	197.68	199.96	212.31	212.37	214.50
	<i>11.74</i>	<i>8.41</i>	<i>7.05</i>	<i>0.23</i>	<i>-0.83</i>	<i>1.15</i>	<i>0.03</i>	<i>0.03</i>	<i>1.00</i>
II. Gross rent, fuel & lighting	155.61	163.47	171.80	167.01	167.12	168.08	173.23	173.25	173.53
	<i>8.54</i>	<i>5.05</i>	<i>5.10</i>	<i>0.08</i>	<i>0.07</i>	<i>0.57</i>	<i>0.03</i>	<i>0.01</i>	<i>0.16</i>
III. Furniture, furnishing, household equipments & operation	195.33	206.14	214.45	207.34	208.73	208.88	218.02	219.10	219.78
	<i>11.25</i>	<i>5.53</i>	<i>4.03</i>	<i>-0.49</i>	<i>0.67</i>	<i>0.07</i>	<i>0.11</i>	<i>0.50</i>	<i>0.31</i>
IV. Medical care & health expenditure	159.66	164.06	180.77	165.69	165.92	165.96	191.69	191.88	192.38
	<i>4.61</i>	<i>2.76</i>	<i>10.19</i>	<i>0.11</i>	<i>0.14</i>	<i>0.02</i>	<i>0.04</i>	<i>0.10</i>	<i>0.26</i>
V. Transport & communication	159.34	167.20	181.78	169.19	169.62	169.82	185.88	186.10	186.97
	<i>7.24</i>	<i>4.93</i>	<i>8.72</i>	<i>0.40</i>	<i>0.25</i>	<i>0.12</i>	<i>0.07</i>	<i>0.12</i>	<i>0.47</i>
VI. Recreation, entertainment, education & cultural services	157.23	164.38	168.02	165.62	165.69	165.79	168.80	169.09	169.69
	<i>8.82</i>	<i>4.55</i>	<i>2.21</i>	<i>0.04</i>	<i>0.04</i>	<i>0.06</i>	<i>0.02</i>	<i>0.17</i>	<i>0.35</i>
VII. Misc. goods & services	182.54	193.75	204.21	195.91	196.97	197.04	207.56	207.71	208.80
	<i>10.92</i>	<i>6.14</i>	<i>5.40</i>	<i>0.19</i>	<i>0.54</i>	<i>0.04</i>	<i>0.04</i>	<i>0.07</i>	<i>0.52</i>

Note : Figures in italics indicate inflation over previous year/month

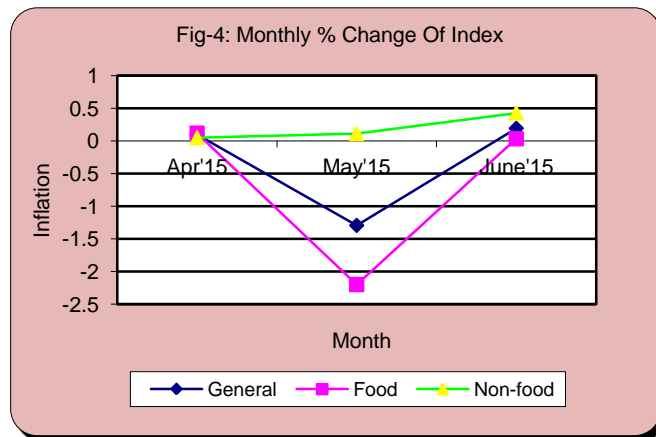
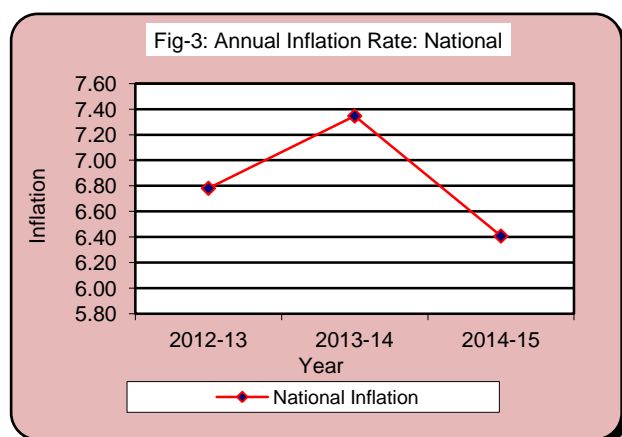


Table 3. Consumer Price Index (CPI) : Rural

CPI Classification	2012-13	2013-14	2014-15	2013-14			2014-15		
				April'14	May'14	June'14	April'15	May'15	June'15
General	183.90	196.90	209.10	200.82	198.41	198.67	212.92	209.99	210.39
	<i>6.14</i>	<i>7.07</i>	<i>6.20</i>	<i>0.05</i>	<i>-1.20</i>	<i>0.13</i>	<i>0.06</i>	<i>-1.38</i>	<i>0.19</i>
1. Food , beverage & tobacco	192.14	207.72	221.02	212.44	208.48	208.31	225.17	220.29	220.31
	<i>4.64</i>	<i>8.11</i>	<i>6.40</i>	<i>0.02</i>	<i>-1.86</i>	<i>-0.08</i>	<i>0.06</i>	<i>-2.17</i>	<i>0.01</i>
2. Non-food	170.79	179.69	190.13	182.32	182.40	183.33	193.42	193.60	194.62
	<i>8.94</i>	<i>5.21</i>	<i>5.81</i>	<i>0.10</i>	<i>0.04</i>	<i>0.51</i>	<i>0.05</i>	<i>0.09</i>	<i>0.53</i>
I. Clothing & footwear	184.54	200.61	214.07	206.12	203.49	206.86	218.28	218.33	221.18
	<i>12.15</i>	<i>8.71</i>	<i>6.71</i>	<i>0.20</i>	<i>-1.28</i>	<i>1.66</i>	<i>0.03</i>	<i>0.02</i>	<i>1.31</i>
II. Gross rent, fuel & lighting	157.40	164.05	171.34	166.64	166.80	167.58	172.73	172.75	172.90
	<i>7.54</i>	<i>4.22</i>	<i>4.44</i>	<i>0.11</i>	<i>0.10</i>	<i>0.47</i>	<i>0.04</i>	<i>0.01</i>	<i>0.09</i>
III. Furniture, furnishing, househ equipments & operation	186.40	197.62	209.29	199.06	201.06	201.21	213.79	214.47	214.97
	<i>10.07</i>	<i>6.02</i>	<i>5.91</i>	<i>-0.39</i>	<i>1.00</i>	<i>0.07</i>	<i>0.15</i>	<i>0.32</i>	<i>0.23</i>
IV. Medical care & health expen:	164.63	168.87	187.18	170.75	171.04	171.07	200.42	200.55	201.12
	<i>4.95</i>	<i>2.58</i>	<i>10.84</i>	<i>0.09</i>	<i>0.17</i>	<i>0.02</i>	<i>0.01</i>	<i>0.06</i>	<i>0.28</i>
V. Transport & communication	160.98	166.01	174.09	167.33	167.92	168.16	175.88	176.19	177.37
	<i>6.89</i>	<i>3.12</i>	<i>4.87</i>	<i>0.36</i>	<i>0.35</i>	<i>0.14</i>	<i>0.07</i>	<i>0.18</i>	<i>0.67</i>
VI. Recreation, entertainment, education & cultural services	174.07	179.72	183.84	181.12	181.23	181.40	184.66	184.94	185.96
	<i>9.99</i>	<i>3.25</i>	<i>2.29</i>	<i>0.05</i>	<i>0.06</i>	<i>0.09</i>	<i>0.01</i>	<i>0.15</i>	<i>0.55</i>
VII. Misc. goods & services	187.05	199.74	212.34	202.18	203.96	204.02	217.06	217.19	218.56
	<i>10.79</i>	<i>6.78</i>	<i>6.31</i>	<i>0.25</i>	<i>0.88</i>	<i>0.03</i>	<i>0.03</i>	<i>0.06</i>	<i>0.63</i>

Note : Figures in italics indicate inflation over previous year/month

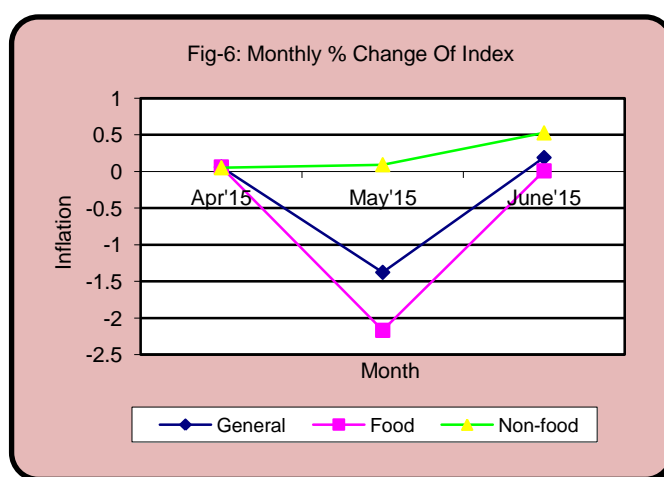
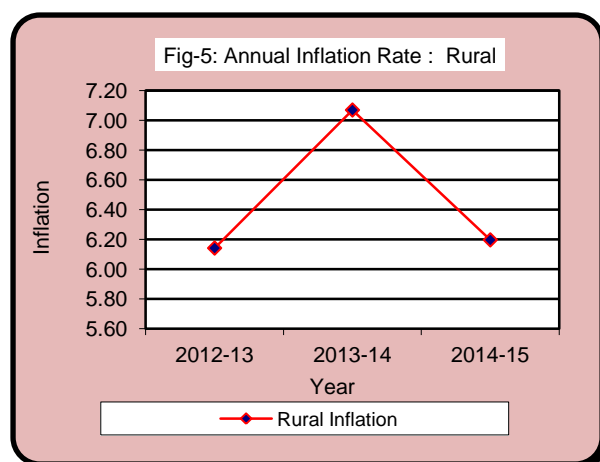


Table 4. Consumer Price Index (CPI) : Urban

CPI Classification	2012-13	2013-14	2014-15	2013-14			2014-15		
				April'14	May'14	June'14	April'15	May'15	June'15
General	177.71	191.73	204.76	196.45	193.26	193.52	208.90	206.53	206.90
	<i>8.02</i>	<i>7.89</i>	<i>6.80</i>	<i>0.04</i>	<i>-1.12</i>	<i>0.13</i>	<i>0.15</i>	<i>-1.13</i>	<i>0.18</i>
1. Food , beverage & tobacco	195.91	214.85	230.56	219.53	214.67	214.64	236.26	230.85	231.04
	<i>6.64</i>	<i>9.67</i>	<i>7.31</i>	<i>0.02</i>	<i>-2.21</i>	<i>-0.01</i>	<i>0.26</i>	<i>-2.29</i>	<i>0.08</i>
2. Non-food	161.88	171.61	182.32	174.50	174.64	175.14	185.10	185.37	185.90
	<i>9.50</i>	<i>6.01</i>	<i>6.24</i>	<i>0.06</i>	<i>0.08</i>	<i>0.29</i>	<i>0.03</i>	<i>0.15</i>	<i>0.29</i>
I. Clothing & footwear	170.39	183.66	197.93	186.44	186.66	186.87	200.96	201.07	201.81
	<i>10.89</i>	<i>7.79</i>	<i>7.77</i>	<i>0.29</i>	<i>0.12</i>	<i>0.11</i>	<i>0.02</i>	<i>0.05</i>	<i>0.37</i>
II. Gross rent, fuel & lighting	153.55	162.80	172.33	167.43	167.49	168.65	173.80	173.82	174.25
	<i>9.77</i>	<i>6.02</i>	<i>5.85</i>	<i>0.03</i>	<i>0.04</i>	<i>0.69</i>	<i>0.01</i>	<i>0.01</i>	<i>0.25</i>
III. Furniture, furnishing, household equipments & operation	211.03	221.11	223.53	221.92	222.21	222.36	225.45	227.24	228.25
	<i>13.13</i>	<i>4.78</i>	<i>1.09</i>	<i>-0.65</i>	<i>0.13</i>	<i>0.07</i>	<i>0.03</i>	<i>0.79</i>	<i>0.44</i>
IV. Medical care & health expenses	151.15	155.82	169.80	157.04	157.15	157.22	176.74	177.04	177.42
	<i>3.98</i>	<i>3.09</i>	<i>8.97</i>	<i>0.17</i>	<i>0.07</i>	<i>0.04</i>	<i>0.09</i>	<i>0.17</i>	<i>0.21</i>
V. Transport & communication	157.53	168.52	190.26	171.25	171.49	171.64	196.89	197.03	197.54
	<i>7.65</i>	<i>6.98</i>	<i>12.90</i>	<i>0.45</i>	<i>0.14</i>	<i>0.09</i>	<i>0.06</i>	<i>0.07</i>	<i>0.26</i>
VI. Recreation, entertainment, education & cultural services	139.06	147.83	150.95	148.89	148.93	148.96	151.68	151.99	152.13
	<i>7.29</i>	<i>6.31</i>	<i>2.11</i>	<i>0.03</i>	<i>0.03</i>	<i>0.02</i>	<i>0.03</i>	<i>0.20</i>	<i>0.09</i>
VII. Misc. goods & services	176.96	186.37	194.16	188.16	188.34	188.42	195.84	196.00	196.76
	<i>11.08</i>	<i>5.32</i>	<i>4.18</i>	<i>0.11</i>	<i>0.10</i>	<i>0.04</i>	<i>0.07</i>	<i>0.08</i>	<i>0.39</i>

Note : Figures in italics indicate inflation over previous year/month

