

Monthly: June 2014

**Table 1. Consumer Price Index (CPI) And Inflation Rate (Point To Point)**

(2005-06=100)

CPI Classification	2011-12	2012-13	2013-14	2012-13			2013-14		
				April'13	May'13	June'13	April'14	May'14	June'14
<b>NATIONAL</b>									
General index	170.19	181.73	195.08	185.13	182.91	184.04	198.93	196.60	196.86
<i>Inflation</i>	8.69	6.78	7.35	8.37	7.98	8.05	7.46	7.48	6.97
Food index	183.65	193.24	209.79	196.87	192.75	194.58	214.50	210.27	210.15
<i>Inflation</i>	7.72	5.22	8.56	8.68	8.13	8.26	8.95	9.09	8.00
Non-food index	152.94	166.97	176.23	170.07	170.29	170.53	178.97	179.07	179.82
<i>Inflation</i>	10.21	9.17	5.55	7.91	7.76	7.75	5.23	5.16	5.45
<b>RURAL</b>									
General index	173.26	183.90	196.90	187.34	184.97	186.15	200.82	198.41	198.67
<i>Inflation</i>	8.69	6.14	7.07	7.80	7.42	7.53	7.19	7.27	6.73
Food index	183.62	192.14	207.72	195.75	191.75	193.53	212.44	208.48	208.31
<i>Inflation</i>	7.50	4.64	8.11	7.96	7.40	7.58	8.52	8.72	7.64
Non-food index	156.77	170.79	179.69	173.96	174.20	174.40	182.32	182.40	183.33
<i>Inflation</i>	10.96	8.94	5.21	7.52	7.47	7.43	4.81	4.71	5.12
<b>URBAN</b>									
General index	164.52	177.71	191.73	181.03	179.08	180.16	195.45	193.26	193.52
<i>Inflation</i>	8.70	8.02	7.89	9.46	9.04	9.08	7.96	7.92	7.42
Food index	183.71	195.91	214.85	199.59	195.18	197.16	219.53	214.66	214.64
<i>Inflation</i>	8.27	6.64	9.67	10.42	9.89	9.94	9.99	9.98	8.87
Non-food index	147.84	161.88	171.61	164.89	165.08	165.37	174.50	174.64	175.14
<i>Inflation</i>	9.16	9.50	6.01	8.47	8.17	8.21	5.83	5.79	5.91

Fig-1: Annual Inflation Rate

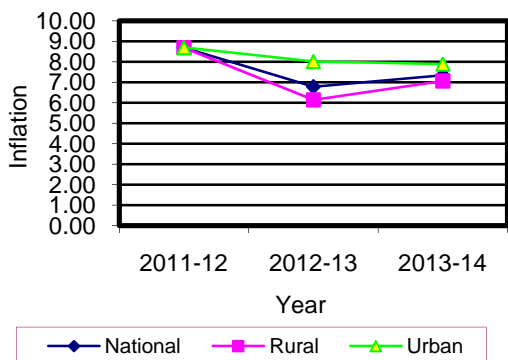
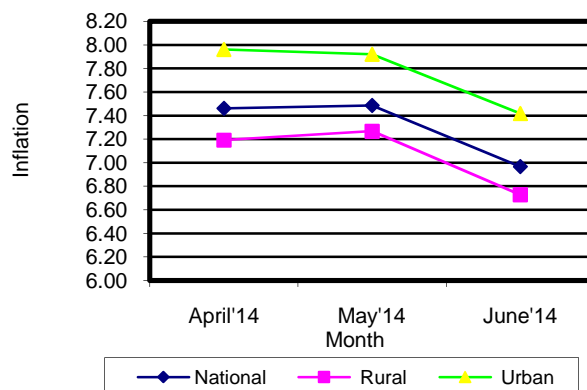


Fig-2: Monthly Inflation Rate

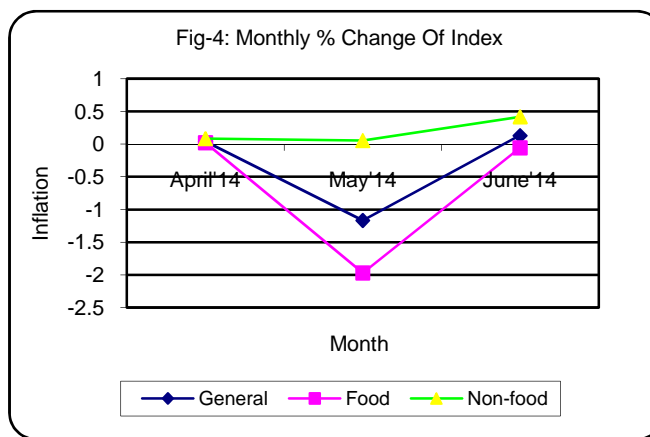
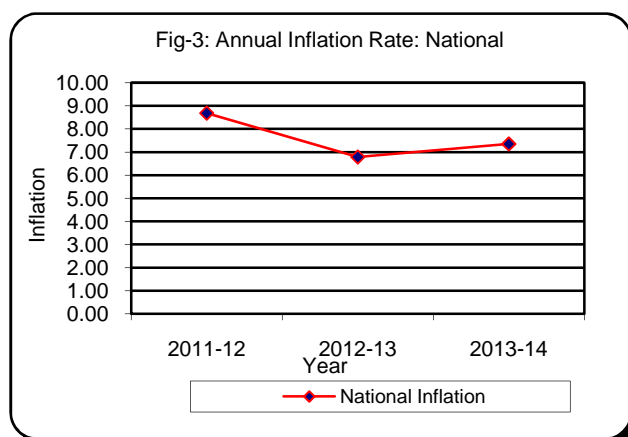


## Table 2. Consumer Price Index (CPI) : National

(On Monthly Basis)  
(2005-06=100)

CPI Classification	2011-12	2012-13	2013-14	2012-13			2013-14		
				April'13	May'13	June'13	April'14	May'14	June'14
<b>General</b>	170.19	181.73	195.08	185.13	182.91	184.04	198.93	196.60	196.86
	<i>8.69</i>	<i>6.78</i>	<i>7.35</i>	0.06	-1.20	0.62	0.04	-1.17	0.13
<b>1. Food, beverage &amp; tobacco</b>	183.65	193.24	209.79	196.87	192.75	194.58	214.50	210.27	210.15
	<i>7.73</i>	<i>5.22</i>	<i>8.56</i>	0.03	-2.09	0.95	0.02	-1.97	-0.06
<b>2. Non-food</b>	152.94	166.97	176.23	170.07	170.29	170.53	178.97	179.07	179.82
	<i>10.21</i>	<i>9.17</i>	<i>5.55</i>	0.11	0.13	0.14	0.08	0.06	0.42
<b>I. Clothing &amp; footwear</b>	160.79	179.66	194.77	183.62	184.35	184.73	199.33	197.68	199.96
	<i>14.78</i>	<i>11.74</i>	<i>8.41</i>	0.14	0.40	0.21	0.23	-0.83	1.15
<b>II. Gross rent, fuel &amp; lighting</b>	143.36	155.61	163.47	157.93	157.95	158.13	167.01	167.12	168.08
	<i>8.34</i>	<i>8.54</i>	<i>5.05</i>	0.13	0.01	0.11	0.08	0.07	0.57
<b>III. Furniture, furnishing, househ equipments &amp; operation</b>	175.58	195.33	206.14	199.69	199.99	200.38	207.34	208.73	208.88
	<i>11.04</i>	<i>11.25</i>	<i>5.53</i>	0.19	0.15	0.20	-0.49	0.67	0.07
<b>IV. Medical care &amp; health expen:</b>	152.63	159.66	164.06	160.61	160.66	160.72	165.69	165.92	165.96
	<i>5.59</i>	<i>4.61</i>	<i>2.76</i>	0.04	0.03	0.04	0.11	0.14	0.02
<b>V. Transport &amp; communication</b>	148.58	159.34	167.20	162.34	162.67	162.95	169.19	169.62	169.82
	<i>16.59</i>	<i>7.24</i>	<i>4.93</i>	0.11	0.20	0.17	0.40	0.25	0.12
<b>VI. Recreation, entertainment, education &amp; cultural services</b>	144.48	157.23	164.38	161.23	161.28	161.47	165.62	165.69	165.79
	<i>3.56</i>	<i>8.82</i>	<i>4.55</i>	0.05	0.03	0.12	0.04	0.04	0.06
<b>VII. Misc. goods &amp; services</b>	164.57	182.54	193.75	186.76	186.84	187.08	195.91	196.97	197.04
	<i>10.69</i>	<i>10.92</i>	<i>6.14</i>	0.05	0.04	0.13	0.19	0.54	0.04

**Note :** Figures in italics indicate inflation over previous year/month



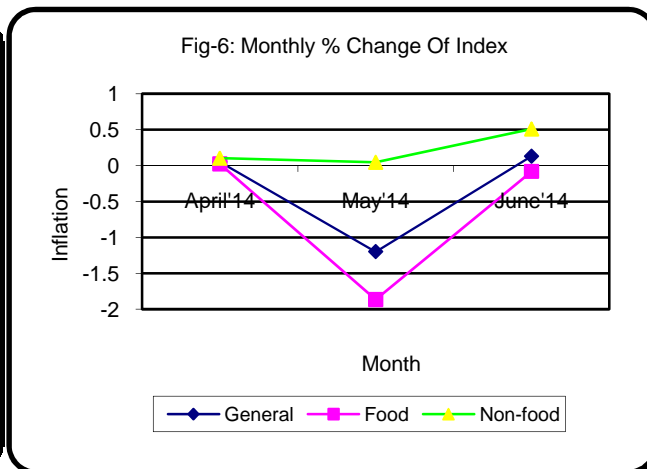
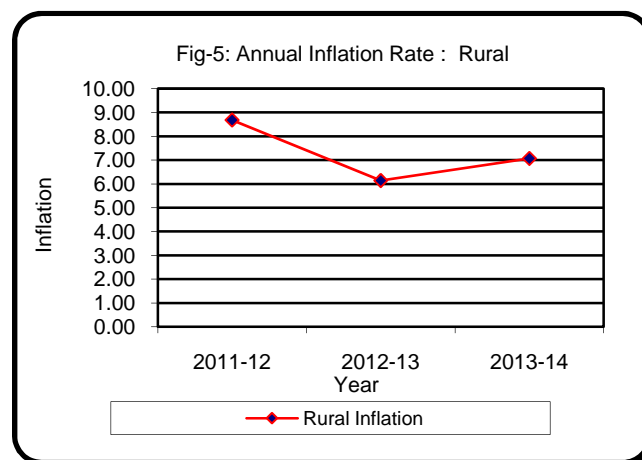
### Table 3. Consumer Price Index (CPI) : Rural

(On Monthly Basis)

(2005-06=100)

CPI Classification	2011-12	2012-13	2013-14	2012-13			2013-14		
				April'13	May'13	June'13	April'14	May'14	June'14
<b>General</b>	173.26	183.90	196.90	187.34	184.97	186.15	200.82	198.41	198.67
	<i>8.69</i>	<i>6.14</i>	<i>7.07</i>	0.06	-1.27	0.64	0.05	-1.20	0.13
<b>1. Food, beverage &amp; tobacco</b>	183.62	192.14	207.72	195.75	191.75	193.53	212.44	208.48	208.31
	<i>7.50</i>	<i>4.64</i>	<i>8.11</i>	0.03	-2.04	0.93	0.02	-1.86	-0.08
<b>2. Non-food</b>	156.77	170.79	179.69	173.96	174.20	174.40	182.32	182.40	183.33
	<i>10.96</i>	<i>8.94</i>	<i>5.21</i>	0.12	0.14	0.11	0.10	0.04	0.51
<b>I. Clothing &amp; footwear</b>	164.55	184.54	200.61	188.57	189.35	189.68	206.12	203.49	206.86
	<i>14.66</i>	<i>12.15</i>	<i>8.71</i>	0.12	0.41	0.17	0.20	-1.28	1.66
<b>II. Gross rent, fuel &amp; lighting</b>	146.37	157.40	164.05	160.15	160.18	160.43	166.64	166.80	167.58
	<i>9.17</i>	<i>7.54</i>	<i>4.22</i>	0.17	0.02	0.16	0.11	0.10	0.47
<b>III. Furniture, furnishing, househ equipments &amp; operation</b>	169.35	186.40	197.62	190.64	190.98	191.28	199.06	201.06	201.21
	<i>9.10</i>	<i>10.07</i>	<i>6.02</i>	0.17	0.18	0.16	-0.39	1.00	0.07
<b>IV. Medical care &amp; health expen:</b>	156.87	164.63	168.87	165.50	165.53	165.55	170.75	171.04	171.07
	<i>6.48</i>	<i>4.95</i>	<i>2.58</i>	0.02	0.02	0.01	0.09	0.17	0.02
<b>V. Transport &amp; communication</b>	150.60	160.98	166.01	163.40	163.65	163.73	167.33	167.92	168.16
	<i>20.12</i>	<i>6.89</i>	<i>3.12</i>	0.07	0.15	0.05	0.36	0.35	0.14
<b>VI. Recreation, entertainment, education &amp; cultural services</b>	158.26	174.07	179.72	177.44	177.50	177.56	181.12	181.23	181.40
	<i>4.73</i>	<i>9.99</i>	<i>3.25</i>	0.05	0.03	0.03	0.05	0.06	0.09
<b>VII. Misc. goods &amp; services</b>	168.84	187.05	199.74	191.72	191.79	191.97	202.18	203.96	204.02
	<i>12.43</i>	<i>10.79</i>	<i>6.78</i>	0.05	0.04	0.09	0.25	0.88	0.03

**Note :** Figures in italics indicate inflation over previous year/month



## Table 4. Consumer Price Index (CPI) : Urban

(On Monthly Basis)

(2005-06=100)

CPI Classification	2011-12	2012-13	2013-14	2012-13			2013-14		
				April'13	May'13	June'13	April'14	May'14	June'14
<b>General</b>	164.52	177.71	191.73	181.03	179.08	180.16	195.45	193.26	193.52
	8.69	8.02	7.89	0.06	-1.08	0.60	0.04	-1.12	0.13
1. <b>Food</b> , beverage & tobacco	183.71	195.91	214.85	199.59	195.18	197.16	219.53	214.67	214.64
	8.27	6.64	9.67	0.01	-2.21	1.01	0.02	-2.21	-0.01
2. <b>Non-food</b>	147.84	161.88	171.61	164.89	165.08	165.37	174.50	174.64	175.14
	9.16	9.50	6.01	0.12	0.12	0.18	0.06	0.08	0.29
I. Clothing & footwear	153.65	170.39	183.66	174.21	174.84	175.31	186.44	186.66	186.87
	15.02	10.89	7.79	0.17	0.36	0.27	0.29	0.12	0.11
II. Gross rent, fuel & lighting	139.88	153.55	162.80	155.35	155.37	155.48	167.43	167.49	168.65
	7.35	9.77	6.02	0.10	0.01	0.07	0.03	0.04	0.69
III. Furniture, furnishing, household equipments & operation	186.54	211.03	221.11	215.60	215.83	216.37	221.92	222.21	222.36
	14.26	13.13	4.78	0.21	0.11	0.25	-0.65	0.13	0.07
IV. Medical care & health expenditure	145.37	151.15	155.82	152.23	152.33	152.45	157.04	157.15	157.22
	3.98	3.98	3.09	0.05	0.07	0.08	0.17	0.07	0.04
V. Transport & communication	146.34	157.53	168.52	161.17	161.58	162.09	171.25	171.49	171.64
	12.81	7.65	6.98	0.16	0.25	0.32	0.45	0.14	0.09
VI. Recreation, entertainment, education & cultural services	129.61	139.06	147.83	143.74	143.79	144.11	148.89	148.93	148.96
	2.05	7.29	6.31	0.05	0.03	0.22	0.03	0.03	0.02
VII. Misc. goods & services	159.31	176.96	186.37	180.64	180.74	181.04	188.16	188.34	188.42
	8.50	11.08	5.32	0.06	0.06	0.17	0.11	0.10	0.04

**Note :** Figures in italics indicate inflation over previous year/month

