

March, 2014

Table 1. Consumer Price Index (CPI) And Inflation Rate (Point To Point)

(2005-06=100)

CPI Classification	2010-11	2011-12	2012-13	2012-13			2013-14		
				Jan'13	Feb'13	Mar'13	Jan'14	Feb'14	Mar'14
NATIONAL									
General index	156.59	170.19	181.73	184.33	184.79	185.01	198.15	198.54	198.84
<i>Inflation</i>	<i>10.91</i>	<i>8.69</i>	<i>6.78</i>	<i>6.62</i>	<i>7.84</i>	<i>7.71</i>	<i>7.50</i>	<i>7.44</i>	<i>7.48</i>
Food index	170.48	183.65	193.24	196.36	196.78	196.82	213.65	214.17	214.45
<i>Inflation</i>	<i>14.11</i>	<i>7.72</i>	<i>5.22</i>	<i>5.02</i>	<i>7.45</i>	<i>7.50</i>	<i>8.81</i>	<i>8.84</i>	<i>8.96</i>
Non-food index	138.77	152.94	166.97	168.92	169.42	169.88	178.26	178.51	178.82
<i>Inflation</i>	<i>6.21</i>	<i>10.21</i>	<i>9.17</i>	<i>9.09</i>	<i>8.44</i>	<i>8.04</i>	<i>5.53</i>	<i>5.37</i>	<i>5.26</i>
RURAL									
General index	159.41	173.26	183.90	186.44	186.99	187.23	199.93	200.40	200.72
<i>Inflation</i>	<i>11.73</i>	<i>8.69</i>	<i>6.14</i>	<i>5.69</i>	<i>7.27</i>	<i>7.16</i>	<i>7.24</i>	<i>7.17</i>	<i>7.21</i>
Food index	170.81	183.62	192.14	195.11	195.65	195.69	211.48	212.12	212.39
<i>Inflation</i>	<i>15.05</i>	<i>7.50</i>	<i>4.64</i>	<i>4.02</i>	<i>6.77</i>	<i>6.88</i>	<i>8.39</i>	<i>8.42</i>	<i>8.53</i>
Non-food index	141.28	156.77	170.79	172.64	173.21	173.76	181.57	181.74	182.15
<i>Inflation</i>	<i>5.86</i>	<i>10.96</i>	<i>8.94</i>	<i>8.82</i>	<i>8.18</i>	<i>7.66</i>	<i>5.17</i>	<i>4.92</i>	<i>4.83</i>
URBAN									
General index	151.36	164.52	177.71	180.45	180.72	180.92	194.84	195.12	195.36
<i>Inflation</i>	<i>9.34</i>	<i>8.70</i>	<i>8.02</i>	<i>8.44</i>	<i>8.97</i>	<i>8.80</i>	<i>7.97</i>	<i>7.97</i>	<i>7.98</i>
Food index	169.68	183.71	195.91	199.42	199.53	199.57	218.97	219.17	219.48
<i>Inflation</i>	<i>11.88</i>	<i>8.27</i>	<i>6.64</i>	<i>7.50</i>	<i>9.10</i>	<i>9.02</i>	<i>9.80</i>	<i>9.84</i>	<i>9.98</i>
Non-food index	135.43	147.84	161.88	163.95	164.36	164.70	173.85	174.20	174.39
<i>Inflation</i>	<i>6.70</i>	<i>9.16</i>	<i>9.50</i>	<i>9.45</i>	<i>8.82</i>	<i>8.58</i>	<i>6.04</i>	<i>5.99</i>	<i>5.88</i>

Fig-1: Annual Inflation Rate

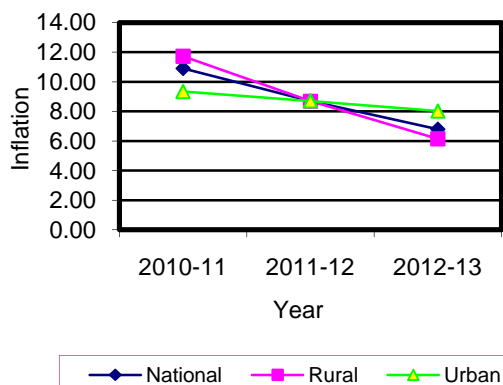


Fig-2: Monthly Inflation Rate

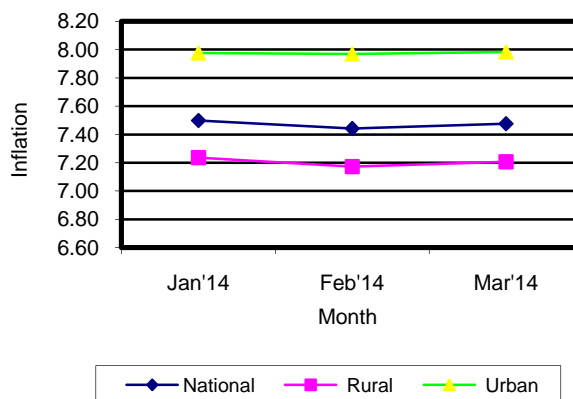


Table 2. Consumer Price Index (CPI) : National

(On Monthly Basis)

(2005-06=100)

CPI Classification	2010-11	2011-12	2012-13	2012-13			2013-14		
				Jan'13	Feb'13	Mar'13	Jan'14	Feb'14	Mar'14
General	156.59	170.19	181.73	184.33	184.79	185.01	198.15	198.54	198.84
	<i>10.92</i>	<i>8.69</i>	<i>6.78</i>	1.05	0.25	0.12	1.19	0.20	0.15
1. Food , beverage & tobacco	170.48	183.65	193.24	196.36	196.78	196.82	213.65	214.17	214.45
	<i>14.11</i>	<i>7.73</i>	<i>5.22</i>	1.02	0.21	0.02	0.84	0.24	0.13
2. Non-food	138.77	152.94	166.97	168.92	169.42	169.88	178.26	178.51	178.82
	<i>6.21</i>	<i>10.21</i>	<i>9.17</i>	1.08	0.30	0.27	1.71	0.14	0.17
I. Clothing & footwear	140.09	160.79	179.66	181.82	182.65	183.36	198.38	198.79	198.87
	<i>7.24</i>	<i>14.78</i>	<i>11.74</i>	0.76	0.46	0.39	2.49	0.21	0.04
II. Gross rent, fuel & lighting	132.33	143.36	155.61	157.07	157.39	157.72	166.53	166.62	166.88
	<i>4.82</i>	<i>8.34</i>	<i>8.54</i>	1.28	0.20	0.21	3.37	0.05	0.16
III. Furniture, furnishing, househ equipments & operation	158.13	175.58	195.33	196.98	198.21	199.32	207.40	208.03	208.36
	<i>11.72</i>	<i>11.04</i>	<i>11.25</i>	0.17	0.62	0.56	0.52	0.30	0.16
IV. Medical care & health expen:	144.55	152.63	159.66	160.20	160.49	160.55	165.24	165.41	165.50
	<i>7.99</i>	<i>5.59</i>	<i>4.61</i>	0.19	0.18	0.04	0.79	0.10	0.05
V. Transport & communication	127.44	148.58	159.34	161.60	161.86	162.16	167.78	168.11	168.52
	<i>3.32</i>	<i>16.59</i>	<i>7.24</i>	1.41	0.16	0.19	0.38	0.20	0.24
VI. Recreation, entertainment, education & cultural services	139.52	144.48	157.23	160.55	160.89	161.15	164.55	164.72	165.55
	<i>5.16</i>	<i>3.56</i>	<i>8.82</i>	2.69	0.21	0.16	0.10	0.10	0.50
VII. Misc. goods & services	148.68	164.57	182.54	185.66	186.13	186.66	195.01	195.17	195.53
	<i>5.93</i>	<i>10.69</i>	<i>10.92</i>	0.90	0.25	0.28	0.51	0.08	0.18

Note : Figures in italics indicate inflation over previous year/month

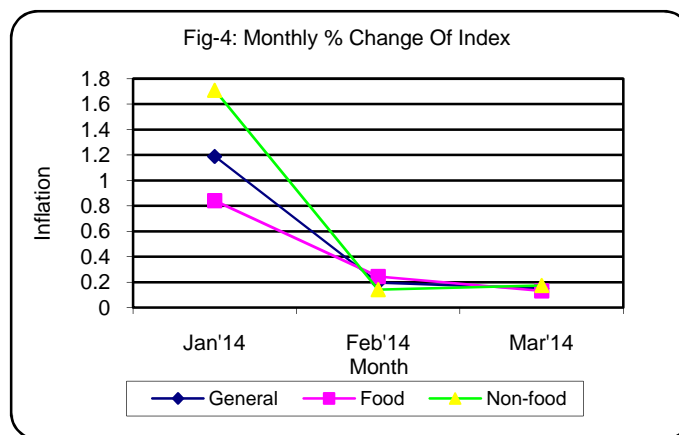
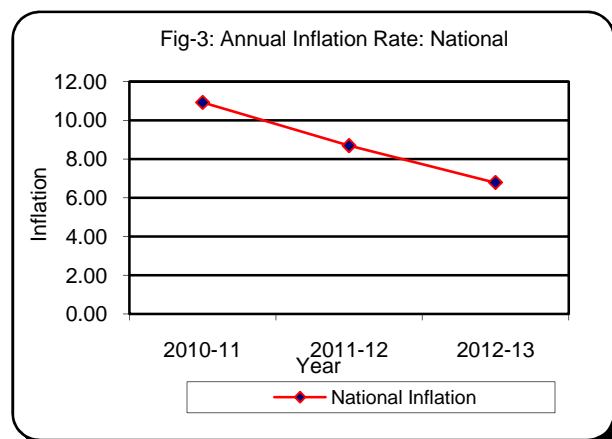


Table 3. Consumer Price Index (CPI) : Rural

(On Monthly Basis)

(2005-06=100)

CPI Classification	2010-11	2011-12	2012-13	2012-13			2013-14		
				Jan'13	Feb'13	Mar'13	Jan'14	Feb'14	Mar'14
General	159.41	173.26	183.90	186.44	186.99	187.23	199.93	200.40	200.72
	<i>11.73</i>	<i>8.69</i>	<i>6.14</i>	<i>1.19</i>	<i>0.30</i>	<i>0.13</i>	<i>1.20</i>	<i>0.24</i>	<i>0.16</i>
1. Food, beverage & tobacco	170.81	183.62	192.14	195.11	195.65	195.69	211.48	212.12	212.39
	<i>15.05</i>	<i>7.50</i>	<i>4.64</i>	<i>1.23</i>	<i>0.28</i>	<i>0.02</i>	<i>1.01</i>	<i>0.30</i>	<i>0.13</i>
2. Non-food	141.28	156.77	170.79	172.64	173.21	173.76	181.57	181.74	182.15
	<i>5.86</i>	<i>10.96</i>	<i>8.94</i>	<i>1.13</i>	<i>0.33</i>	<i>0.32</i>	<i>1.59</i>	<i>0.09</i>	<i>0.23</i>
I. Clothing & footwear	143.51	164.55	184.54	186.88	187.64	188.34	205.55	205.62	205.70
	<i>8.54</i>	<i>14.66</i>	<i>12.15</i>	<i>0.86</i>	<i>0.41</i>	<i>0.37</i>	<i>3.55</i>	<i>0.03</i>	<i>0.04</i>
II. Gross rent, fuel & lighting	134.08	146.37	157.40	158.95	159.43	159.88	165.87	166.00	166.46
	<i>3.74</i>	<i>9.17</i>	<i>7.54</i>	<i>1.83</i>	<i>0.30</i>	<i>0.28</i>	<i>2.03</i>	<i>0.08</i>	<i>0.28</i>
III. Furniture, furnishing, househ equipments & operation	155.22	169.35	186.40	187.31	188.91	190.32	198.94	199.37	199.83
	<i>9.50</i>	<i>9.10</i>	<i>10.07</i>	<i>0.11</i>	<i>0.85</i>	<i>0.75</i>	<i>0.65</i>	<i>0.22</i>	<i>0.23</i>
IV. Medical care & health expen:	147.33	156.87	164.63	165.13	165.41	165.46	170.42	170.55	170.59
	<i>6.92</i>	<i>6.48</i>	<i>4.95</i>	<i>0.16</i>	<i>0.17</i>	<i>0.03</i>	<i>1.15</i>	<i>0.08</i>	<i>0.02</i>
V. Transport & communication	125.37	150.60	160.98	162.61	162.77	163.28	166.19	166.47	166.73
	<i>3.36</i>	<i>20.12</i>	<i>6.89</i>	<i>0.71</i>	<i>0.10</i>	<i>0.31</i>	<i>0.39</i>	<i>0.17</i>	<i>0.16</i>
VI. Recreation, entertainment, education & cultural services	151.11	158.26	174.07	177.24	177.27	177.35	179.50	179.64	181.03
	<i>5.19</i>	<i>4.73</i>	<i>9.99</i>	<i>2.13</i>	<i>0.02</i>	<i>0.05</i>	<i>0.15</i>	<i>0.08</i>	<i>0.77</i>
VII. Misc. goods & services	150.17	168.84	187.05	190.73	191.23	191.62	201.17	201.32	201.67
	<i>5.43</i>	<i>12.43</i>	<i>10.79</i>	<i>1.38</i>	<i>0.26</i>	<i>0.20</i>	<i>0.63</i>	<i>0.07</i>	<i>0.17</i>

Note : Figures in italics indicate inflation over previous year/month

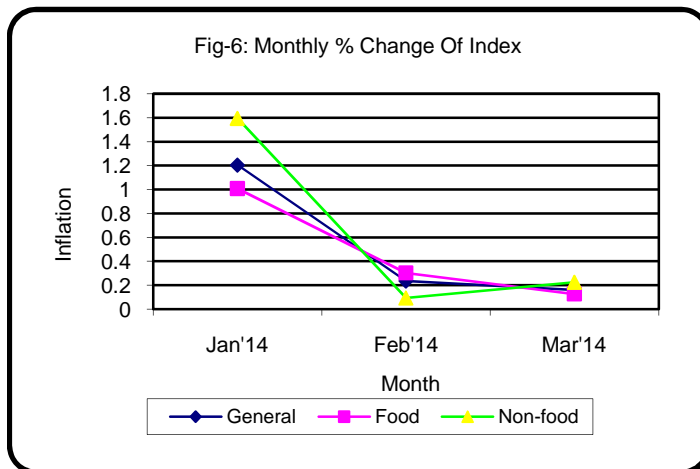
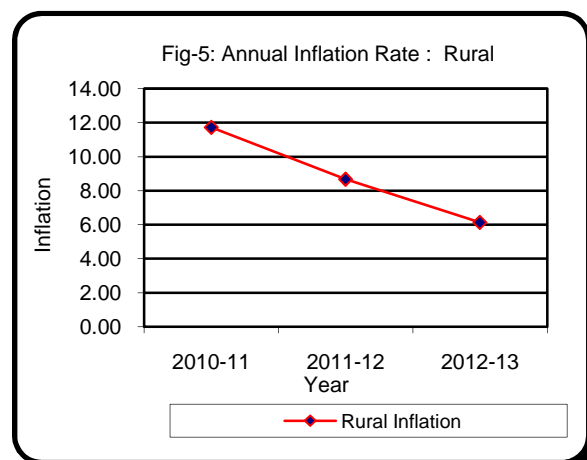


Table 4. Consumer Price Index (CPI) : Urban

(On Monthly Basis)

(2005-06=100)

CPI Classification	2010-11	2011-12	2012-13	2012-13			2013-14		
				Jan'13	Feb'13	Mar'13	Jan'14	Feb'14	Mar'14
General	151.36	164.52	177.71	180.45	180.72	180.92	194.84	195.12	195.36
	<i>9.34</i>	<i>8.69</i>	<i>8.02</i>	<i>0.77</i>	<i>0.15</i>	<i>0.11</i>	<i>1.14</i>	<i>0.14</i>	<i>0.12</i>
1. Food, beverage & tobacco	169.68	183.71	195.91	199.42	199.53	199.57	218.97	219.17	219.48
	<i>11.88</i>	<i>8.27</i>	<i>6.64</i>	<i>0.55</i>	<i>0.06</i>	<i>0.02</i>	<i>0.47</i>	<i>0.09</i>	<i>0.14</i>
2. Non-food	135.43	147.84	161.88	163.95	164.36	164.70	173.85	174.20	174.39
	<i>6.71</i>	<i>9.16</i>	<i>9.50</i>	<i>1.01</i>	<i>0.25</i>	<i>0.21</i>	<i>1.88</i>	<i>0.20</i>	<i>0.11</i>
I. Clothing & footwear	133.58	153.65	170.39	172.21	173.16	173.91	184.77	185.81	185.91
	<i>4.69</i>	<i>15.02</i>	<i>10.89</i>	<i>0.56</i>	<i>0.55</i>	<i>0.43</i>	<i>0.33</i>	<i>0.56</i>	<i>0.05</i>
II. Gross rent, fuel & lighting	130.30	139.88	153.55	154.90	155.04	155.20	167.29	167.33	167.38
	<i>6.13</i>	<i>7.35</i>	<i>9.77</i>	<i>0.64</i>	<i>0.09</i>	<i>0.10</i>	<i>4.96</i>	<i>0.02</i>	<i>0.03</i>
III. Furniture, furnishing, household equipments & operation	163.26	186.54	211.03	213.98	214.58	215.14	222.29	223.26	223.37
	<i>15.66</i>	<i>14.26</i>	<i>13.13</i>	<i>0.24</i>	<i>0.28</i>	<i>0.26</i>	<i>0.33</i>	<i>0.44</i>	<i>0.05</i>
IV. Medical care & health expenditure	139.80	145.37	151.15	151.77	152.08	152.15	156.37	156.61	156.77
	<i>9.99</i>	<i>3.98</i>	<i>3.98</i>	<i>0.24</i>	<i>0.20</i>	<i>0.05</i>	<i>0.13</i>	<i>0.15</i>	<i>0.10</i>
V. Transport & communication	129.72	146.34	157.53	160.48	160.85	160.91	169.53	169.93	170.49
	<i>3.27</i>	<i>12.81</i>	<i>7.65</i>	<i>2.21</i>	<i>0.23</i>	<i>0.04</i>	<i>0.36</i>	<i>0.24</i>	<i>0.33</i>
VI. Recreation, entertainment, education & cultural services	127.01	129.61	139.06	142.53	143.21	143.67	148.43	148.61	148.84
	<i>5.11</i>	<i>2.05</i>	<i>7.29</i>	<i>3.45</i>	<i>0.48</i>	<i>0.32</i>	<i>0.05</i>	<i>0.12</i>	<i>0.15</i>
VII. Misc. goods & services	146.83	159.31	176.96	179.41	179.83	180.54	187.40	187.57	187.95
	<i>6.55</i>	<i>8.50</i>	<i>11.08</i>	<i>0.29</i>	<i>0.23</i>	<i>0.39</i>	<i>0.35</i>	<i>0.09</i>	<i>0.20</i>

Note : Figures in italics indicate inflation over previous year/month

