

Table 1. Consumer Price Index (CPI) And Inflation Rate (Point To Point)

(2005-06=100)

CPI Classification	2012-13	2013-14	2014-15	2014-15			2015-16		
				Aug'14	Sept'14	Oct'14	Aug'15	Sept'15	Oct'15
NATIONAL									
General index	181.73	195.08	207.58	202.53	205.39	206.81	215.03	218.21	219.62
<i>Inflation</i>	6.78	7.35	6.41	6.91	6.84	6.60	6.17	6.24	6.19
Food index	193.24	209.79	223.80	218.66	222.66	224.23	231.91	235.85	237.44
<i>Inflation</i>	5.22	8.56	6.68	7.67	7.63	7.16	6.06	5.92	5.89
Non-food index	166.97	176.23	186.79	181.85	183.25	184.47	193.39	195.59	196.77
<i>Inflation</i>	9.17	5.55	5.99	5.76	5.63	5.74	6.35	6.73	6.67
RURAL									
General index	183.90	196.90	209.10	204.37	207.17	208.41	216.15	219.31	220.53
<i>Inflation</i>	6.14	7.07	6.20	6.83	6.75	6.49	5.76	5.86	5.82
Food index	192.14	207.72	221.02	216.43	220.21	221.59	228.17	231.79	233.19
<i>Inflation</i>	4.64	8.11	6.40	7.56	7.52	7.11	5.42	5.26	5.23
Non-food index	170.79	179.69	190.13	185.16	186.41	187.45	197.02	199.44	200.39
<i>Inflation</i>	8.94	5.21	5.81	5.46	5.31	5.36	6.41	6.99	6.90
URBAN									
General index	177.71	191.73	204.76	199.14	202.11	203.84	212.96	216.17	217.93
<i>Inflation</i>	8.02	7.89	6.80	7.08	7.02	6.79	6.94	6.96	6.91
Food index	195.91	214.85	230.56	224.09	228.65	230.66	241.03	245.74	247.82
<i>Inflation</i>	6.64	9.67	7.31	7.89	7.88	7.27	7.56	7.47	7.44
Non-food index	161.88	171.61	182.32	177.44	179.03	180.51	188.55	190.44	191.93
<i>Inflation</i>	9.50	6.01	6.24	6.19	6.07	6.26	6.26	6.37	6.33

Fig-1: Annual Inflation Rate

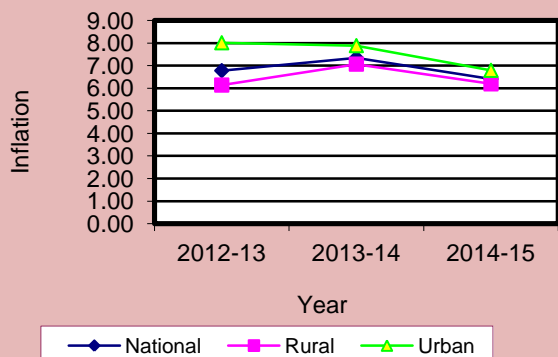


Fig-2: Monthly Inflation Rate

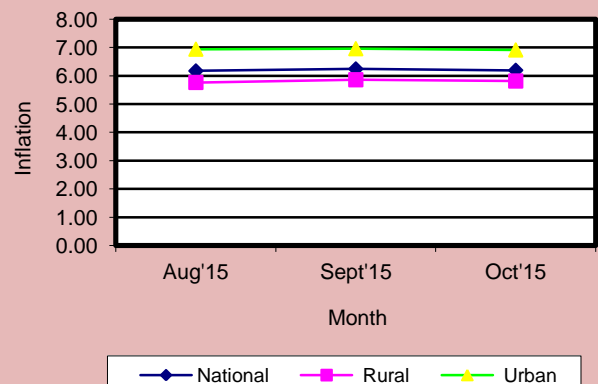


Table 2. Consumer Price Index (CPI) : National

CPI Classification	2012-13	2013-14	2014-15	2014-15			2015-16		
				Aug'14	Sept'14	Oct'14	Aug'15	Sept'15	Oct'15
General	181.73	195.08	207.58	202.53	205.39	206.81	215.03	218.21	219.62
	<i>6.78</i>	<i>7.35</i>	<i>6.41</i>	<i>1.30</i>	<i>1.41</i>	<i>0.69</i>	<i>1.12</i>	<i>1.48</i>	<i>0.65</i>
1. Food , beverage & tobacco	193.24	209.79	223.80	218.66	222.66	224.23	231.91	235.85	237.44
	<i>5.22</i>	<i>8.56</i>	<i>6.68</i>	<i>1.83</i>	<i>1.83</i>	<i>0.71</i>	<i>1.81</i>	<i>1.70</i>	<i>0.67</i>
2. Non-food	166.97	176.23	186.79	181.85	183.25	184.47	193.39	195.59	196.77
	<i>9.17</i>	<i>5.55</i>	<i>5.99</i>	<i>0.50</i>	<i>0.77</i>	<i>0.67</i>	<i>0.07</i>	<i>1.14</i>	<i>0.60</i>
I. Clothing & footwear	179.66	194.77	208.50	204.55	206.37	206.93	223.21	231.68	231.53
	<i>11.74</i>	<i>8.41</i>	<i>7.05</i>	<i>0.05</i>	<i>0.89</i>	<i>0.27</i>	<i>-0.10</i>	<i>3.79</i>	<i>-0.06</i>
II. Gross rent, fuel & lighting	155.61	163.47	171.80	170.03	170.43	170.73	174.06	175.28	175.45
	<i>8.54</i>	<i>5.05</i>	<i>5.10</i>	<i>0.80</i>	<i>0.24</i>	<i>0.18</i>	<i>0.18</i>	<i>0.70</i>	<i>0.10</i>
III. Furniture, furnishing, household equipments & operation	195.33	206.14	214.45	209.27	210.46	211.88	222.31	223.02	223.94
	<i>11.25</i>	<i>5.53</i>	<i>4.03</i>	<i>0.40</i>	<i>0.57</i>	<i>0.67</i>	<i>0.21</i>	<i>0.32</i>	<i>0.41</i>
IV. Medical care & health expenses	159.66	164.06	180.77	166.26	167.80	171.51	193.78	194.13	194.36
	<i>4.61</i>	<i>2.76</i>	<i>10.19</i>	<i>0.04</i>	<i>0.93</i>	<i>2.21</i>	<i>0.09</i>	<i>0.18</i>	<i>0.12</i>
V. Transport & communication	159.34	167.20	181.78	173.31	177.58	179.58	191.19	193.62	200.08
	<i>7.24</i>	<i>4.93</i>	<i>8.72</i>	<i>1.20</i>	<i>2.46</i>	<i>1.13</i>	<i>0.20</i>	<i>1.27</i>	<i>3.34</i>
VI. Recreation, entertainment, education & cultural services	157.23	164.38	168.02	166.15	166.98	167.48	169.90	169.97	170.22
	<i>8.82</i>	<i>4.55</i>	<i>2.21</i>	<i>0.07</i>	<i>0.50</i>	<i>0.30</i>	<i>0.06</i>	<i>0.04</i>	<i>0.15</i>
VII. Misc. goods & services	182.54	193.75	204.21	198.12	199.03	202.15	208.82	209.20	210.86
	<i>10.92</i>	<i>6.14</i>	<i>5.40</i>	<i>0.27</i>	<i>0.46</i>	<i>1.57</i>	<i>-0.38</i>	<i>0.18</i>	<i>0.79</i>

Note : Figures in italics indicate inflation over previous year/month

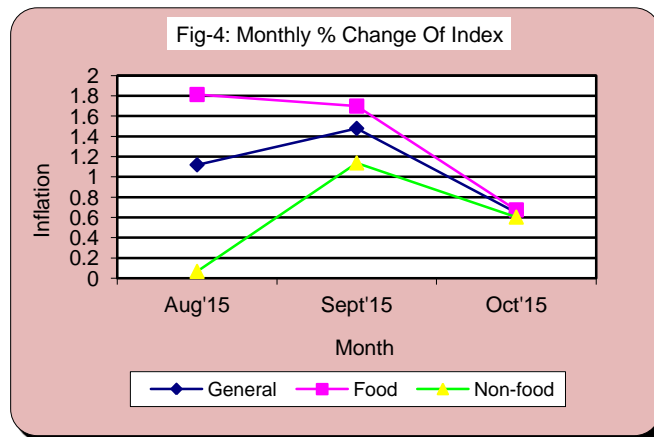
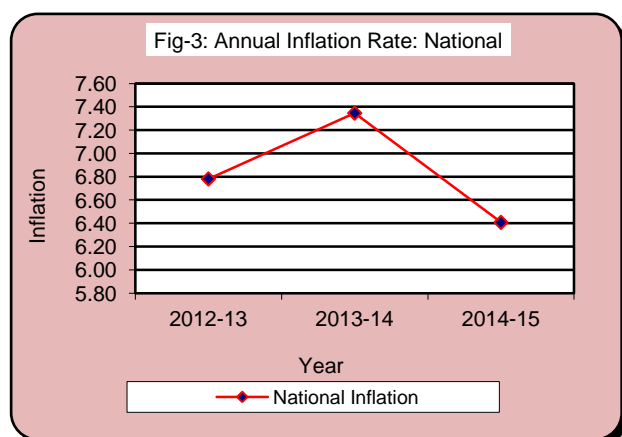


Table 3. Consumer Price Index (CPI) : Rural

CPI Classification	2012-13	2013-14	2014-15	2014-15			2015-16		
				Aug'14	Sept'14	Oct'14	Aug'15	Sept'15	Oct'15
General	183.90	196.90	209.10	204.37	207.17	208.41	216.15	219.31	220.53
	<i>6.14</i>	<i>7.07</i>	<i>6.20</i>	<i>1.23</i>	<i>1.37</i>	<i>0.60</i>	<i>1.12</i>	<i>1.46</i>	<i>0.56</i>
1. Food , beverage & tobacco	192.14	207.72	221.02	216.43	220.21	221.59	228.17	231.79	233.19
	<i>4.64</i>	<i>8.11</i>	<i>6.40</i>	<i>1.72</i>	<i>1.75</i>	<i>0.63</i>	<i>1.72</i>	<i>1.59</i>	<i>0.60</i>
2. Non-food	170.79	179.69	190.13	185.16	186.41	187.45	197.02	199.44	200.39
	<i>8.94</i>	<i>5.21</i>	<i>5.81</i>	<i>0.31</i>	<i>0.68</i>	<i>0.56</i>	<i>0.05</i>	<i>1.23</i>	<i>0.48</i>
I. Clothing & footwear	184.54	200.61	214.07	210.53	212.47	212.98	229.94	240.91	240.82
	<i>12.15</i>	<i>8.71</i>	<i>6.71</i>	<i>0.09</i>	<i>0.92</i>	<i>0.24</i>	<i>-0.13</i>	<i>4.77</i>	<i>-0.04</i>
II. Gross rent, fuel & lighting	157.40	164.05	171.34	169.29	169.83	170.29	173.54	173.90	173.91
	<i>7.54</i>	<i>4.22</i>	<i>4.44</i>	<i>0.42</i>	<i>0.32</i>	<i>0.27</i>	<i>0.27</i>	<i>0.21</i>	<i>0.01</i>
III. Furniture, furnishing, househ equipments & operation	186.40	197.62	209.29	203.62	205.43	206.16	216.41	217.33	218.52
	<i>10.07</i>	<i>6.02</i>	<i>5.91</i>	<i>0.53</i>	<i>0.89</i>	<i>0.36</i>	<i>0.24</i>	<i>0.43</i>	<i>0.55</i>
IV. Medical care & health expens	164.63	168.87	187.18	171.32	172.24	175.95	202.80	203.20	203.52
	<i>4.95</i>	<i>2.58</i>	<i>10.84</i>	<i>0.02</i>	<i>0.54</i>	<i>2.15</i>	<i>0.02</i>	<i>0.20</i>	<i>0.16</i>
V. Transport & communication	160.98	166.01	174.09	170.08	172.77	173.28	180.13	181.71	187.27
	<i>6.89</i>	<i>3.12</i>	<i>4.87</i>	<i>0.76</i>	<i>1.58</i>	<i>0.30</i>	<i>0.23</i>	<i>0.88</i>	<i>3.06</i>
VI. Recreation, entertainment, education & cultural services	174.07	179.72	183.84	181.76	182.55	183.14	186.20	186.25	186.30
	<i>9.99</i>	<i>3.25</i>	<i>2.29</i>	<i>0.08</i>	<i>0.43</i>	<i>0.32</i>	<i>0.03</i>	<i>0.03</i>	<i>0.03</i>
VII. Misc. goods & services	187.05	199.74	212.34	204.72	205.19	208.32	218.07	218.14	219.41
	<i>10.79</i>	<i>6.78</i>	<i>6.31</i>	<i>0.17</i>	<i>0.23</i>	<i>1.53</i>	<i>-0.64</i>	<i>0.03</i>	<i>0.58</i>

Note : Figures in italics indicate inflation over previous year/month

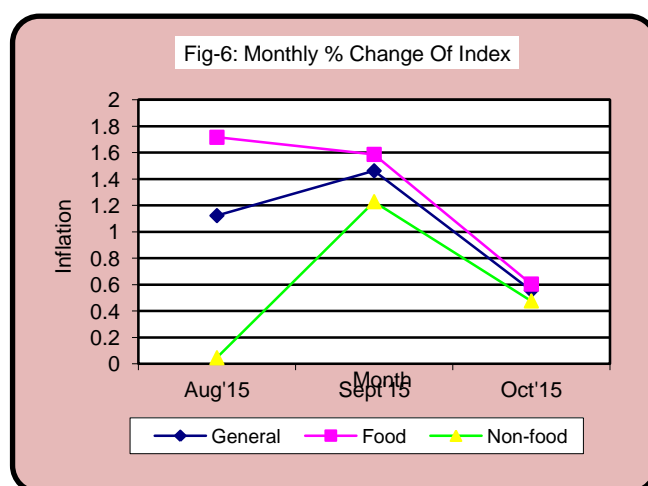
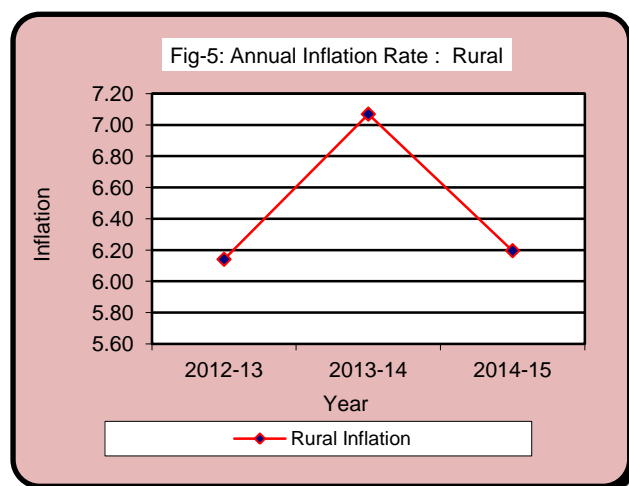


Table 4. Consumer Price Index (CPI) : Urban

CPI Classification	2012-13	2013-14	2014-15	2014-15			2015-16		
				Aug'14	Sept'14	Oct'14	Aug'15	Sept'15	Oct'15
General	177.71	191.73	204.76	199.14	202.11	203.84	212.96	216.17	217.93
	<i>8.02</i>	<i>7.89</i>	<i>6.80</i>	<i>1.43</i>	<i>1.49</i>	<i>0.86</i>	<i>1.11</i>	<i>1.51</i>	<i>0.81</i>
1. Food , beverage & tobacco	195.91	214.85	230.56	224.08	228.65	230.66	241.03	245.74	247.82
	<i>6.64</i>	<i>9.67</i>	<i>7.31</i>	<i>2.05</i>	<i>2.03</i>	<i>0.88</i>	<i>2.04</i>	<i>1.95</i>	<i>0.85</i>
2. Non-food	161.88	171.61	182.32	177.44	179.03	180.51	188.55	190.44	191.93
	<i>9.50</i>	<i>6.01</i>	<i>6.24</i>	<i>0.75</i>	<i>0.90</i>	<i>0.83</i>	<i>0.09</i>	<i>1.00</i>	<i>0.78</i>
I. Clothing & footwear	170.39	183.66	197.93	193.19	194.80	195.45	210.44	214.15	213.90
	<i>10.89</i>	<i>7.79</i>	<i>7.77</i>	<i>-0.03</i>	<i>0.83</i>	<i>0.33</i>	<i>-0.03</i>	<i>1.76</i>	<i>-0.12</i>
II. Gross rent, fuel & lighting	153.55	162.80	172.33	170.88	171.14	171.24	174.67	176.87	177.24
	<i>9.77</i>	<i>6.02</i>	<i>5.85</i>	<i>1.24</i>	<i>0.15</i>	<i>0.06</i>	<i>0.08</i>	<i>1.26</i>	<i>0.21</i>
III. Furniture, furnishing, household equipments & operation	211.03	221.11	223.53	219.19	219.31	221.93	232.70	233.04	233.48
	<i>13.13</i>	<i>4.78</i>	<i>1.09</i>	<i>0.20</i>	<i>0.05</i>	<i>1.19</i>	<i>0.16</i>	<i>0.15</i>	<i>0.19</i>
IV. Medical care & health expenses	151.15	155.82	169.80	157.59	160.20	163.91	178.33	178.60	178.68
	<i>3.98</i>	<i>3.09</i>	<i>8.97</i>	<i>0.09</i>	<i>1.66</i>	<i>2.32</i>	<i>0.21</i>	<i>0.15</i>	<i>0.04</i>
V. Transport & communication	157.53	168.52	190.26	176.87	182.89	186.53	203.31	206.74	214.19
	<i>7.65</i>	<i>6.98</i>	<i>12.90</i>	<i>1.66</i>	<i>3.40</i>	<i>1.99</i>	<i>0.15</i>	<i>1.69</i>	<i>3.60</i>
VI. Recreation, entertainment, education & cultural services	139.06	147.83	150.95	149.31	150.18	150.58	152.31	152.40	152.86
	<i>7.29</i>	<i>6.31</i>	<i>2.11</i>	<i>0.05</i>	<i>0.58</i>	<i>0.27</i>	<i>0.09</i>	<i>0.06</i>	<i>0.30</i>
VII. Misc. goods & services	176.96	186.37	194.16	189.97	191.42	194.53	197.39	198.15	200.30
	<i>11.08</i>	<i>5.32</i>	<i>4.18</i>	<i>0.41</i>	<i>0.76</i>	<i>1.62</i>	<i>-0.04</i>	<i>0.39</i>	<i>1.09</i>

Note : Figures in italics indicate inflation over previous year/month

