

Month: Sept'14

**Table 1. Consumer Price Index (CPI) And Inflation Rate
(Point To Point)**

(2005-06=100)

CPI Classification	2011-12	2012-13	2013-14	2013-14			2014-15		
				July'13	Aug'13	Sep'13	July'14	Aug'14	Sep'14
NATIONAL									
General index	170.19	181.73	195.08	186.79	189.44	192.24	199.94	202.53	205.39
<i>Inflation</i>	8.69	6.78	7.35	7.85	7.39	7.13	7.04	6.91	6.84
Food index	183.65	193.24	209.79	198.95	203.09	206.88	214.74	218.66	222.66
<i>Inflation</i>	7.72	5.22	8.56	8.14	8.09	7.93	7.94	7.67	7.63
Non-food index	152.94	166.97	176.23	171.18	171.94	173.48	180.95	181.85	183.25
<i>Inflation</i>	10.21	9.17	5.55	7.40	6.35	5.94	5.71	5.76	5.63
RURAL									
General index	173.26	183.90	196.90	188.79	191.31	194.07	201.88	204.37	207.17
<i>Inflation</i>	8.69	6.14	7.07	7.43	6.90	6.77	6.93	6.83	6.75
Food index	183.62	192.14	207.72	197.41	201.21	204.80	212.76	216.43	220.21
<i>Inflation</i>	7.50	4.64	8.11	7.52	7.50	7.43	7.78	7.56	7.52
Non-food index	156.77	170.79	179.69	175.07	175.58	177.01	184.58	185.16	186.41
<i>Inflation</i>	10.96	8.94	5.21	7.27	5.83	5.59	5.43	5.46	5.31
URBAN									
General index	164.52	177.71	191.73	183.08	185.98	188.86	196.34	199.14	202.11
<i>Inflation</i>	8.70	8.02	7.89	8.64	8.34	7.82	7.24	7.08	7.02
Food index	183.71	195.91	214.85	202.73	207.70	211.94	219.58	224.09	228.65
<i>Inflation</i>	8.27	6.64	9.67	9.65	9.52	9.11	8.31	7.89	7.88
Non-food index	147.84	161.88	171.61	166.00	167.09	168.78	176.12	177.44	179.03
<i>Inflation</i>	9.16	9.50	6.01	7.59	7.08	6.44	6.10	6.19	6.07

Fig-1: Annual Inflation Rate

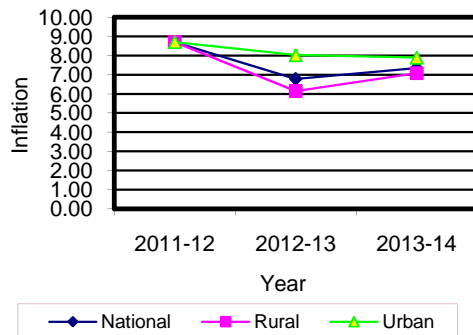


Fig-2: Monthly Inflation Rate

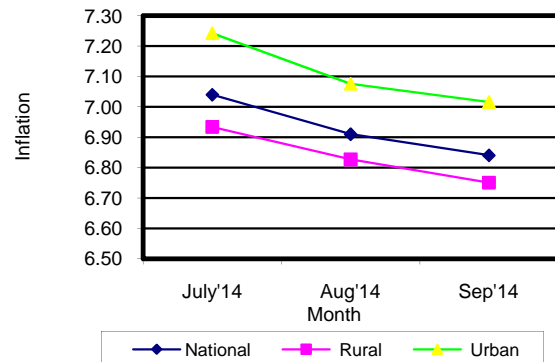


Table 2. Consumer Price Index (CPI) : National

(On Monthly Basis)

(2005-06=100)

CPI Classification	2011-12	2012-13	2013-14	2013-14			2014-15		
				July'13	Aug'13	Sep'13	July'14	Aug'14	Sep'14
General	170.19	181.73	195.08	186.79	189.44	192.24	199.94	202.53	205.39
	<i>8.69</i>	<i>6.78</i>	<i>7.35</i>	<i>1.49</i>	<i>1.42</i>	<i>1.48</i>	<i>1.56</i>	<i>1.30</i>	<i>1.41</i>
1. Food, beverage & tobacco	183.65	193.24	209.79	198.95	203.09	206.88	214.74	218.66	222.66
	<i>7.73</i>	<i>5.22</i>	<i>8.56</i>	<i>2.25</i>	<i>2.08</i>	<i>1.87</i>	<i>2.18</i>	<i>1.83</i>	<i>1.83</i>
2. Non-food	152.94	166.97	176.23	171.18	171.94	173.48	180.95	181.85	183.25
	<i>10.21</i>	<i>9.17</i>	<i>5.55</i>	<i>0.38</i>	<i>0.44</i>	<i>0.90</i>	<i>0.63</i>	<i>0.50</i>	<i>0.77</i>
I. Clothing & footwear	160.79	179.66	194.77	187.56	188.17	190.18	204.44	204.55	206.37
	<i>14.78</i>	<i>11.74</i>	<i>8.41</i>	<i>1.53</i>	<i>0.33</i>	<i>1.07</i>	<i>2.24</i>	<i>0.05</i>	<i>0.89</i>
II. Gross rent, fuel & lighting	143.36	155.61	163.47	158.29	159.04	159.52	168.68	170.03	170.43
	<i>8.34</i>	<i>8.54</i>	<i>5.05</i>	<i>0.10</i>	<i>0.47</i>	<i>0.30</i>	<i>0.36</i>	<i>0.80</i>	<i>0.24</i>
III. Furniture, furnishing, household equipments & operation	175.58	195.33	206.14	200.80	201.93	204.93	208.43	209.27	210.46
	<i>11.04</i>	<i>11.25</i>	<i>5.53</i>	<i>0.21</i>	<i>0.56</i>	<i>1.49</i>	<i>-0.22</i>	<i>0.40</i>	<i>0.57</i>
IV. Medical care & health expenses	152.63	159.66	164.06	160.93	161.27	162.11	166.19	166.26	167.80
	<i>5.59</i>	<i>4.61</i>	<i>2.76</i>	<i>0.13</i>	<i>0.21</i>	<i>0.52</i>	<i>0.14</i>	<i>0.04</i>	<i>0.93</i>
V. Transport & communication	148.58	159.34	167.20	163.24	163.93	166.02	171.26	173.31	177.58
	<i>16.59</i>	<i>7.24</i>	<i>4.93</i>	<i>0.18</i>	<i>0.42</i>	<i>1.27</i>	<i>0.85</i>	<i>1.20</i>	<i>2.46</i>
VI. Recreation, entertainment, education & cultural services	144.48	157.23	164.38	161.61	162.70	163.35	166.04	166.15	166.98
	<i>3.56</i>	<i>8.82</i>	<i>4.55</i>	<i>0.09</i>	<i>0.67</i>	<i>0.40</i>	<i>0.15</i>	<i>0.07</i>	<i>0.50</i>
VII. Misc. goods & services	164.57	182.54	193.75	187.56	188.24	192.08	197.58	198.12	199.03
	<i>10.69</i>	<i>10.92</i>	<i>6.14</i>	<i>0.26</i>	<i>0.36</i>	<i>2.04</i>	<i>0.27</i>	<i>0.27</i>	<i>0.46</i>

Note : Figures in italics indicate inflation over previous year/month

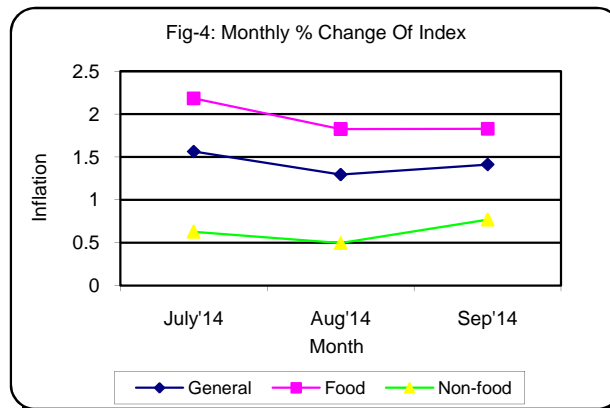
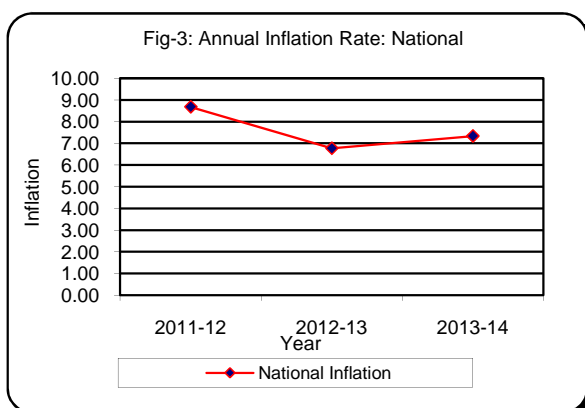


Table 3. Consumer Price Index (CPI) : Rural

(On Monthly Basis)

(2005-06=100)

CPI Classification	2011-12	2012-13	2013-14	2013-14			2014-15		
				July'13	Aug'13	Sep'13	July'14	Aug'14	Sep'14
General	173.26	183.90	196.90	188.79	191.31	194.07	201.88	204.37	207.17
	<i>8.69</i>	<i>6.14</i>	<i>7.07</i>	1.42	1.33	1.44	1.62	1.23	1.37
1. Food , beverage & tobacco	183.62	192.14	207.72	197.41	201.21	204.80	212.76	216.43	220.21
	<i>7.50</i>	<i>4.64</i>	<i>8.11</i>	2.00	1.92	1.78	2.14	1.72	1.75
2. Non-food	156.77	170.79	179.69	175.07	175.58	177.01	184.58	185.16	186.41
	<i>10.96</i>	<i>8.94</i>	<i>5.21</i>	0.38	0.29	0.81	0.68	<i>0.31</i>	<i>0.68</i>
I. Clothing & footwear	164.55	184.54	200.61	192.59	193.23	194.96	210.34	210.53	212.47
	<i>14.66</i>	<i>12.15</i>	<i>8.71</i>	1.53	0.33	0.90	1.68	<i>0.09</i>	<i>0.92</i>
II. Gross rent, fuel & lighting	146.37	157.40	164.05	160.55	160.62	161.30	168.59	169.29	169.83
	<i>9.17</i>	<i>7.54</i>	<i>4.22</i>	0.07	0.04	0.42	0.60	<i>0.42</i>	<i>0.32</i>
III. Furniture, furnishing, household equipments & operation	169.35	186.40	197.62	191.58	192.85	196.31	202.55	203.62	205.43
	<i>9.10</i>	<i>10.07</i>	<i>6.02</i>	0.16	0.66	1.79	0.67	<i>0.53</i>	<i>0.89</i>
IV. Medical care & health expenses	156.87	164.63	168.87	165.64	165.77	166.20	171.29	171.32	172.24
	<i>6.48</i>	<i>4.95</i>	<i>2.58</i>	0.05	0.08	0.26	0.13	<i>0.02</i>	<i>0.54</i>
V. Transport & communication	150.60	160.98	166.01	163.83	164.39	164.89	168.79	170.08	172.77
	<i>20.12</i>	<i>6.89</i>	<i>3.12</i>	0.06	0.34	0.30	0.37	<i>0.76</i>	<i>1.58</i>
VI. Recreation, entertainment, education & cultural services	158.26	174.07	179.72	177.72	178.56	178.85	181.61	181.76	182.55
	<i>4.73</i>	<i>9.99</i>	<i>3.25</i>	0.09	0.47	0.16	0.12	<i>0.08</i>	<i>0.43</i>
VII. Misc. goods & services	168.84	187.05	199.74	192.46	193.20	197.47	204.37	204.72	205.19
	<i>12.43</i>	<i>10.79</i>	<i>6.78</i>	0.26	0.38	2.21	0.17	<i>0.17</i>	<i>0.23</i>

Note : Figures in italics indicate inflation over previous year/month

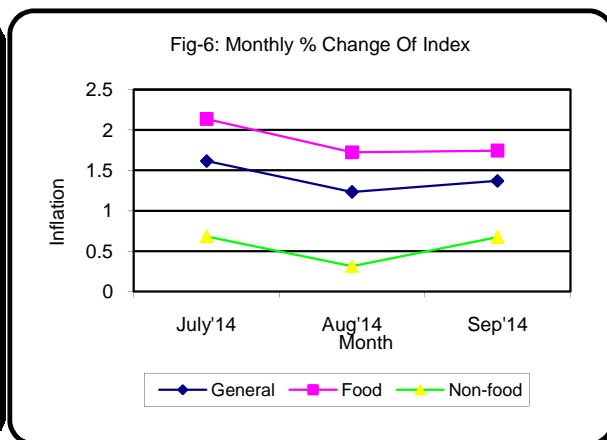
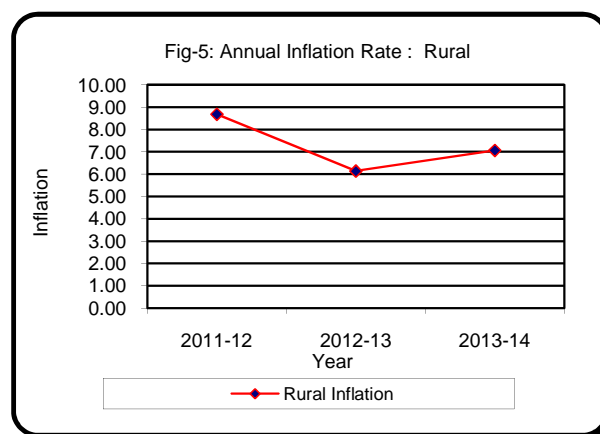


Table 4. Consumer Price Index (CPI) : Urban

(On Monthly Basis)

(2005-06=100)

CPI Classification	2011-12	2012-13	2013-14	2013-14			2014-15		
				July'13	Aug'13	Sep'13	July'14	Aug'14	Sep'14
General	164.52	177.71	191.73	183.08	185.98	188.86	196.34	199.14	202.11
	<i>8.69</i>	<i>8.02</i>	<i>7.89</i>	<i>1.62</i>	<i>1.58</i>	<i>1.55</i>	<i>1.46</i>	<i>1.43</i>	<i>1.49</i>
1. Food , beverage & tobacco	183.71	195.91	214.85	202.73	207.70	211.94	219.58	224.09	228.65
	<i>8.27</i>	<i>6.64</i>	<i>9.67</i>	<i>2.83</i>	<i>2.45</i>	<i>2.04</i>	<i>2.30</i>	<i>2.05</i>	<i>2.03</i>
2. Non-food	147.84	161.88	171.61	166.00	167.09	168.78	176.12	177.44	179.03
	<i>9.16</i>	<i>9.50</i>	<i>6.01</i>	<i>0.38</i>	<i>0.66</i>	<i>1.01</i>	<i>0.56</i>	<i>0.75</i>	<i>0.90</i>
I. Clothing & footwear	153.65	170.39	183.66	177.99	178.57	181.09	193.24	193.19	194.80
	<i>15.02</i>	<i>10.89</i>	<i>7.79</i>	<i>1.53</i>	<i>0.33</i>	<i>1.41</i>	<i>3.41</i>	<i>-0.03</i>	<i>0.83</i>
II. Gross rent, fuel & lighting	139.88	153.55	162.80	155.67	157.22	157.46	168.78	170.88	171.14
	<i>7.35</i>	<i>9.77</i>	<i>6.02</i>	<i>0.12</i>	<i>1.00</i>	<i>0.15</i>	<i>0.08</i>	<i>1.24</i>	<i>0.15</i>
III. Furniture, furnishing, household equipments & operation	186.54	211.03	221.11	217.02	217.92	220.07	218.75	219.19	219.31
	<i>14.26</i>	<i>13.13</i>	<i>4.78</i>	<i>0.30</i>	<i>0.41</i>	<i>0.99</i>	<i>-1.62</i>	<i>0.20</i>	<i>0.05</i>
IV. Medical care & health expenditure	145.37	151.15	155.82	152.87	153.57	155.09	157.45	157.59	160.20
	<i>3.98</i>	<i>3.98</i>	<i>3.09</i>	<i>0.28</i>	<i>0.46</i>	<i>0.99</i>	<i>0.15</i>	<i>0.09</i>	<i>1.66</i>
V. Transport & communication	146.34	157.53	168.52	162.59	163.42	167.27	173.98	176.87	182.89
	<i>12.81</i>	<i>7.65</i>	<i>6.98</i>	<i>0.31</i>	<i>0.51</i>	<i>2.36</i>	<i>1.36</i>	<i>1.66</i>	<i>3.40</i>
VI. Recreation, entertainment, education & cultural services	129.61	139.06	147.83	144.23	145.59	146.63	149.23	149.31	150.18
	<i>2.05</i>	<i>7.29</i>	<i>6.31</i>	<i>0.08</i>	<i>0.94</i>	<i>0.71</i>	<i>0.18</i>	<i>0.05</i>	<i>0.58</i>
VII. Misc. goods & services	159.31	176.96	186.37	181.52	182.11	185.43	189.20	189.97	191.42
	<i>8.50</i>	<i>11.08</i>	<i>5.32</i>	<i>0.27</i>	<i>0.33</i>	<i>1.82</i>	<i>0.41</i>	<i>0.41</i>	<i>0.76</i>

Note : Figures in italics indicate inflation over previous year/month

