

Month: Aug'2014

Table 1. Consumer Price Index (CPI) And Inflation Rate (Point To Point)

(2005-06=100)

CPI Classification	2011-12	2012-13	2013-14	2012-13	2013-14		2013-14	2014-15	
				June'13	July'13	Aug'13	June'14	July'14	Aug'14
NATIONAL									
General index	170.19	181.73	195.08	184.04	186.79	189.44	196.86	199.94	202.53
<i>Inflation</i>	8.69	6.78	7.35	8.05	7.85	7.39	6.97	7.04	6.91
Food index	183.65	193.24	209.79	194.58	198.95	203.09	210.15	214.74	218.66
<i>Inflation</i>	7.72	5.22	8.56	8.26	8.14	8.09	8.00	7.94	7.67
Non-food index	152.94	166.97	176.23	170.53	171.18	171.94	179.82	180.95	181.85
<i>Inflation</i>	10.21	9.17	5.55	7.75	7.40	6.35	5.45	5.71	5.76
RURAL									
General index	173.26	183.90	196.90	186.15	188.79	191.31	198.67	201.88	204.37
<i>Inflation</i>	8.69	6.14	7.07	7.53	7.43	6.90	6.73	6.93	6.83
Food index	183.62	192.14	207.72	193.53	197.41	201.21	208.31	212.76	216.43
<i>Inflation</i>	7.50	4.64	8.11	7.58	7.52	7.50	7.64	7.78	7.56
Non-food index	156.77	170.79	179.69	174.40	175.07	175.58	183.33	184.58	185.16
<i>Inflation</i>	10.96	8.94	5.21	7.43	7.27	5.83	5.12	5.43	5.46
URBAN									
General index	164.52	177.71	191.73	180.16	183.08	185.98	193.52	196.34	199.14
<i>Inflation</i>	8.70	8.02	7.89	9.08	8.64	8.34	7.42	7.24	7.08
Food index	183.71	195.91	214.85	197.16	202.73	207.70	214.64	219.58	224.09
<i>Inflation</i>	8.27	6.64	9.67	9.94	9.65	9.52	8.87	8.31	7.89
Non-food index	147.84	161.88	171.61	165.37	166.00	167.09	175.14	176.12	177.44
<i>Inflation</i>	9.16	9.50	6.01	8.21	7.59	7.08	5.91	6.10	6.19

Fig-1: Annual Inflation Rate

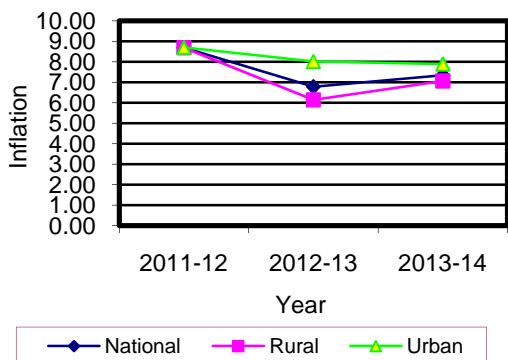


Fig-2: Monthly Inflation Rate

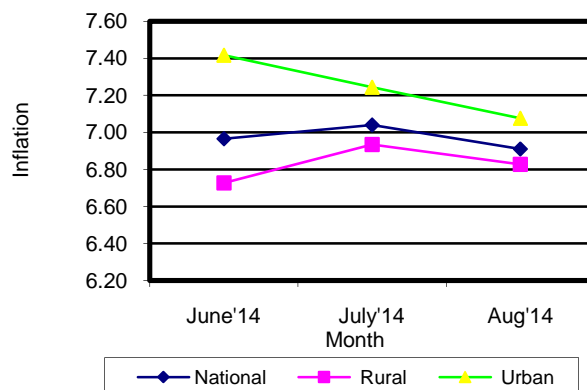


Table 2. Consumer Price Index (CPI) : National

(On Monthly Basis)

(2005-06=100)

CPI Classification	2011-12	2012-13	2013-14	2012-13	2013-14		2013-14	2014-15	
				June'13	July'13	Aug'13	June'14	July'14	Aug'14
General	170.19	181.73	195.08	184.04	186.79	189.44	196.86	199.94	202.53
	8.69	6.78	7.35	0.62	1.49	1.42	0.13	1.56	1.30
1. Food , beverage & tobacco	183.65	193.24	209.79	194.58	198.95	203.09	210.15	214.74	218.66
	7.73	5.22	8.56	0.95	2.25	2.08	-0.06	2.18	1.83
2. Non-food	152.94	166.97	176.23	170.53	171.18	171.94	179.82	180.95	181.85
	10.21	9.17	5.55	0.14	0.38	0.44	0.42	0.63	0.50
I. Clothing & footwear	160.79	179.66	194.77	184.73	187.56	188.17	199.96	204.44	204.55
	14.78	11.74	8.41	0.21	1.53	0.33	1.15	2.24	0.05
II. Gross rent, fuel & lighting	143.36	155.61	163.47	158.13	158.29	159.04	168.08	168.68	170.03
	8.34	8.54	5.05	0.11	0.10	0.47	0.57	0.36	0.80
III. Furniture, furnishing, househ equipments & operation	175.58	195.33	206.14	200.38	200.80	201.93	208.88	208.43	209.27
	11.04	11.25	5.53	0.20	0.21	0.56	0.07	-0.22	0.40
IV. Medical care & health expen:	152.63	159.66	164.06	160.72	160.93	161.27	165.96	166.19	166.26
	5.59	4.61	2.76	0.04	0.13	0.21	0.02	0.14	0.04
V. Transport & communication	148.58	159.34	167.20	162.95	163.24	163.93	169.82	171.26	173.31
	16.59	7.24	4.93	0.17	0.18	0.42	0.12	0.85	1.20
VI. Recreation, entertainment, education & cultural services	144.48	157.23	164.38	161.47	161.61	162.70	165.79	166.04	166.15
	3.56	8.82	4.55	0.12	0.09	0.67	0.06	0.15	0.07
VII. Misc. goods & services	164.57	182.54	193.75	187.08	187.56	188.24	197.04	197.58	198.12
	10.69	10.92	6.14	0.13	0.26	0.36	0.04	0.27	0.27

Note : Figures in italics indicate inflation over previous year/month

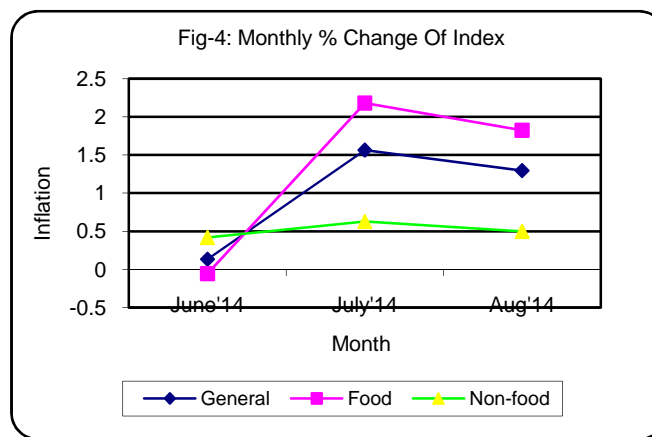
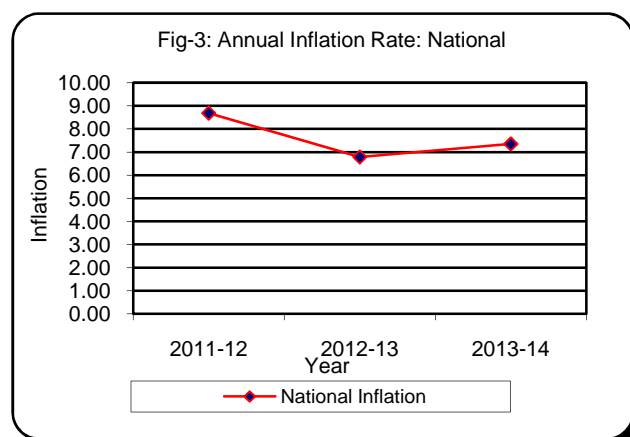


Table 3. Consumer Price Index (CPI) : Rural

(On Monthly Basis)

(2005-06=100)

CPI Classification	2011-12	2012-13	2013-14	2012-13	2013-14		2013-14	2014-15	
				June'13	July'13	Aug'13	June'14	July'14	Aug'14
General	173.26	183.90	196.90	186.15	188.79	191.31	198.67	201.88	204.37
	<i>8.69</i>	<i>6.14</i>	<i>7.07</i>	0.64	1.42	1.33	0.13	1.62	1.23
1. Food , beverage & tobacco	183.62	192.14	207.72	193.53	197.41	201.21	208.31	212.76	216.43
	<i>7.50</i>	<i>4.64</i>	<i>8.11</i>	0.93	2.00	1.92	-0.08	2.14	1.72
2. Non-food	156.77	170.79	179.69	174.40	175.07	175.58	183.33	184.58	185.16
	<i>10.96</i>	<i>8.94</i>	<i>5.21</i>	0.11	0.38	0.29	0.51	0.68	0.31
I. Clothing & footwear	164.55	184.54	200.61	189.68	192.59	193.23	206.86	210.34	210.53
	<i>14.66</i>	<i>12.15</i>	<i>8.71</i>	0.17	1.53	0.33	1.66	1.68	0.09
II. Gross rent, fuel & lighting	146.37	157.40	164.05	160.43	160.55	160.62	167.58	168.59	169.29
	<i>9.17</i>	<i>7.54</i>	<i>4.22</i>	0.16	0.07	0.04	0.47	0.60	0.42
III. Furniture, furnishing, househ equipments & operation	169.35	186.40	197.62	191.28	191.58	192.85	201.21	202.55	203.62
	<i>9.10</i>	<i>10.07</i>	<i>6.02</i>	0.16	0.16	0.66	0.07	0.67	0.53
IV. Medical care & health expen:	156.87	164.63	168.87	165.55	165.64	165.77	171.07	171.29	171.32
	<i>6.48</i>	<i>4.95</i>	<i>2.58</i>	0.01	0.05	0.08	0.02	0.13	0.02
V. Transport & communication	150.60	160.98	166.01	163.73	163.83	164.39	168.16	168.79	170.08
	<i>20.12</i>	<i>6.89</i>	<i>3.12</i>	0.05	0.06	0.34	0.14	0.37	0.76
VI. Recreation, entertainment, education & cultural services	158.26	174.07	179.72	177.56	177.72	178.56	181.40	181.61	181.76
	<i>4.73</i>	<i>9.99</i>	<i>3.25</i>	0.03	0.09	0.47	0.09	0.12	0.08
VII. Misc. goods & services	168.84	187.05	199.74	191.97	192.46	193.20	204.02	204.37	204.72
	<i>12.43</i>	<i>10.79</i>	<i>6.78</i>	0.09	0.26	0.38	0.03	0.17	0.17

Note : Figures in italics indicate inflation over previous year/month

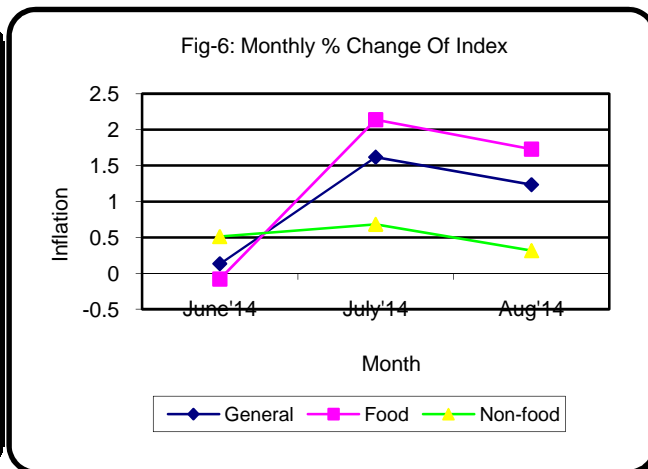
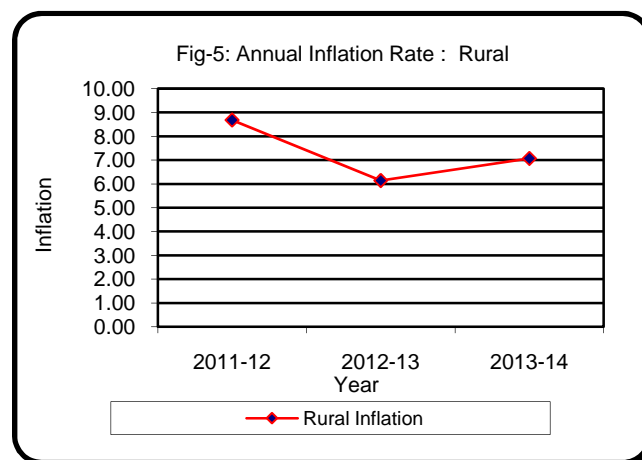


Table 4. Consumer Price Index (CPI) : Urban

(On Monthly Basis)

(2005-06=100)

CPI Classification	2011-12	2012-13	2013-14	2012-13	2013-14		2013-14	2014-15	
				June'13	July'13	Aug'13	June'14	July'14	Aug'14
General	164.52	177.71	191.73	180.16	183.08	185.98	193.52	196.34	199.14
	8.69	8.02	7.89	0.60	1.62	1.58	0.13	1.46	1.43
1. Food , beverage & tobacco	183.71	195.91	214.85	197.16	202.73	207.70	214.64	219.58	224.09
	8.27	6.64	9.67	1.01	2.83	2.45	-0.01	2.30	2.05
2. Non-food	147.84	161.88	171.61	165.37	166.00	167.09	175.14	176.12	177.44
	9.16	9.50	6.01	0.18	0.38	0.66	0.29	0.56	0.75
I. Clothing & footwear	153.65	170.39	183.66	175.31	177.99	178.57	186.87	193.24	193.19
	15.02	10.89	7.79	0.27	1.53	0.33	0.11	3.41	-0.03
II. Gross rent, fuel & lighting	139.88	153.55	162.80	155.48	155.67	157.22	168.65	168.78	170.88
	7.35	9.77	6.02	0.07	0.12	1.00	0.69	0.08	1.24
III. Furniture, furnishing, household equipments & operation	186.54	211.03	221.11	216.37	217.02	217.92	222.36	218.75	219.19
	14.26	13.13	4.78	0.25	0.30	0.41	0.07	-1.62	0.20
IV. Medical care & health expenditure	145.37	151.15	155.82	152.45	152.87	153.57	157.22	157.45	157.59
	3.98	3.98	3.09	0.08	0.28	0.46	0.04	0.15	0.09
V. Transport & communication	146.34	157.53	168.52	162.09	162.59	163.42	171.64	173.98	176.87
	12.81	7.65	6.98	0.32	0.31	0.51	0.09	1.36	1.66
VI. Recreation, entertainment, education & cultural services	129.61	139.06	147.83	144.11	144.23	145.59	148.96	149.23	149.31
	2.05	7.29	6.31	0.22	0.08	0.94	0.02	0.18	0.05
VII. Misc. goods & services	159.31	176.96	186.37	181.04	181.52	182.11	188.42	189.20	189.97
	8.50	11.08	5.32	0.17	0.27	0.33	0.04	0.41	0.41

Note : Figures in italics indicate inflation over previous year/month

