

Month: November 2014

**Table 1. Consumer Price Index (CPI) And Inflation Rate
(Point To Point)**

(2005-06=100)

CPI Classification	2011-12	2012-13	2013-14	2013-14			2014-15		
				Sep'13	Oct'13	Nov'13	Sep'14	Oct'14	Nov'14
NATIONAL									
General index	170.19	181.73	195.08	192.24	194.01	194.76	205.39	206.81	206.86
<i>Inflation</i>	8.69	6.78	7.35	7.13	7.03	7.15	6.84	6.60	6.21
Food index	183.65	193.24	209.79	206.88	209.25	210.27	222.66	224.23	223.81
<i>Inflation</i>	7.72	5.22	8.56	7.93	8.38	8.55	7.63	7.16	6.44
Non-food index	152.94	166.97	176.23	173.48	174.46	174.92	183.25	184.47	185.14
<i>Inflation</i>	10.21	9.17	5.55	5.94	5.02	5.08	5.63	5.74	5.84
RURAL									
General index	173.26	183.90	196.90	194.07	195.70	196.43	207.17	208.41	208.32
<i>Inflation</i>	8.69	6.14	7.07	6.77	6.78	6.92	6.75	6.49	6.05
Food index	183.62	192.14	207.72	204.80	206.89	207.74	220.21	221.59	221.00
<i>Inflation</i>	7.50	4.64	8.11	7.43	7.86	8.06	7.52	7.11	6.38
Non-food index	156.77	170.79	179.69	177.01	177.91	178.43	186.41	187.45	188.15
<i>Inflation</i>	10.96	8.94	5.21	5.59	4.84	4.88	5.31	5.36	5.45
URBAN									
General index	164.52	177.71	191.73	188.86	190.88	191.69	202.11	203.84	204.16
<i>Inflation</i>	8.70	8.02	7.89	7.82	7.52	7.58	7.02	6.79	6.51
Food index	183.71	195.91	214.85	211.94	215.03	216.34	228.65	230.66	230.65
<i>Inflation</i>	8.27	6.64	9.67	9.11	9.64	9.67	7.88	7.27	6.61
Non-food index	147.84	161.88	171.61	168.78	169.87	170.24	179.03	180.51	181.12
<i>Inflation</i>	9.16	9.50	6.01	6.44	5.28	5.35	6.07	6.26	6.39

Fig-1: Annual Inflation Rate

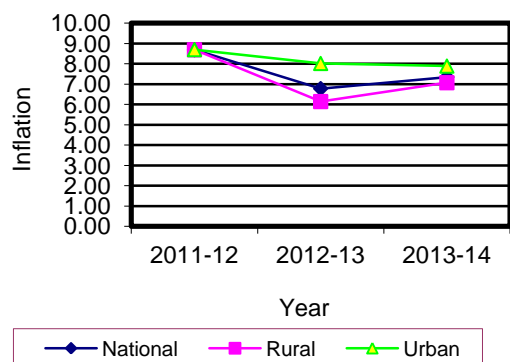


Fig-2: Monthly Inflation Rate

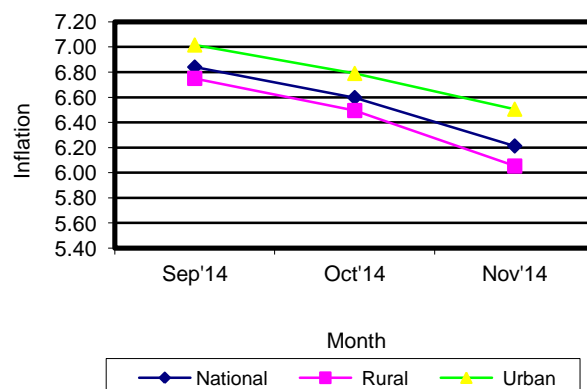


Table 2. Consumer Price Index (CPI) : National

(On Monthly Basis)

(2005-06=100)

CPI Classification	2011-12	2012-13	2013-14	2013-14			2014-15		
				Sep'13	Oct'13	Nov'13	Sep'14	Oct'14	Nov'14
General	170.19	181.73	195.08	192.24	194.01	194.76	205.39	206.81	206.86
	<i>8.69</i>	<i>6.78</i>	<i>7.35</i>	<i>1.48</i>	<i>0.92</i>	<i>0.39</i>	<i>1.41</i>	<i>0.69</i>	<i>0.02</i>
1. Food , beverage & tobacco	183.65	193.24	209.79	206.88	209.25	210.24	222.66	224.23	223.81
	<i>7.73</i>	<i>5.22</i>	<i>8.56</i>	<i>1.87</i>	<i>1.15</i>	<i>0.47</i>	<i>1.83</i>	<i>0.71</i>	<i>-0.19</i>
2. Non-food	152.94	166.97	176.23	173.48	174.46	174.92	183.25	184.47	185.14
	<i>10.21</i>	<i>9.17</i>	<i>5.55</i>	<i>0.90</i>	<i>0.56</i>	<i>0.26</i>	<i>0.77</i>	<i>0.67</i>	<i>0.36</i>
I. Clothing & footwear	160.79	179.66	194.77	190.18	191.85	192.85	206.37	206.93	207.47
	<i>14.78</i>	<i>11.74</i>	<i>8.41</i>	<i>1.07</i>	<i>0.88</i>	<i>0.52</i>	<i>0.89</i>	<i>0.27</i>	<i>0.26</i>
II. Gross rent, fuel & lighting	143.36	155.61	163.47	159.52	160.52	160.94	170.43	170.73	170.94
	<i>8.34</i>	<i>8.54</i>	<i>5.05</i>	<i>0.30</i>	<i>0.63</i>	<i>0.26</i>	<i>0.24</i>	<i>0.18</i>	<i>0.12</i>
III. Furniture, furnishing, household equipments & operation	175.58	195.33	206.14	204.93	205.24	205.67	210.46	211.88	212.29
	<i>11.04</i>	<i>11.25</i>	<i>5.53</i>	<i>1.49</i>	<i>0.15</i>	<i>0.21</i>	<i>0.57</i>	<i>0.67</i>	<i>0.19</i>
IV. Medical care & health expenditure	152.63	159.66	164.06	162.11	163.15	163.55	167.80	171.51	175.57
	<i>5.59</i>	<i>4.61</i>	<i>2.76</i>	<i>0.52</i>	<i>0.64</i>	<i>0.25</i>	<i>0.93</i>	<i>2.21</i>	<i>2.37</i>
V. Transport & communication	148.58	159.34	167.20	166.02	166.28	166.77	177.58	179.58	180.36
	<i>16.59</i>	<i>7.24</i>	<i>4.93</i>	<i>1.27</i>	<i>0.16</i>	<i>0.29</i>	<i>2.46</i>	<i>1.13</i>	<i>0.43</i>
VI. Recreation, entertainment, education & cultural services	144.48	157.23	164.38	163.35	164.29	164.33	166.98	167.48	167.61
	<i>3.56</i>	<i>8.82</i>	<i>4.55</i>	<i>0.40</i>	<i>0.58</i>	<i>0.02</i>	<i>0.50</i>	<i>0.30</i>	<i>0.08</i>
VII. Misc. goods & services	164.57	182.54	193.75	192.08	193.70	193.82	199.03	202.15	202.43
	<i>10.69</i>	<i>10.92</i>	<i>6.14</i>	<i>2.04</i>	<i>0.84</i>	<i>0.06</i>	<i>0.46</i>	<i>1.57</i>	<i>0.14</i>

Note : Figures in italics indicate inflation over previous year/month

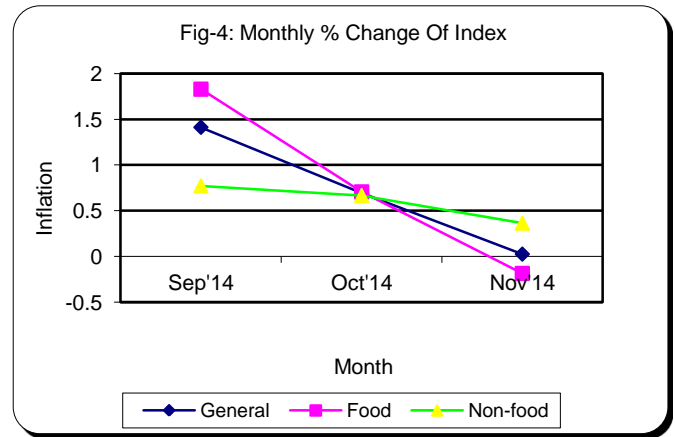
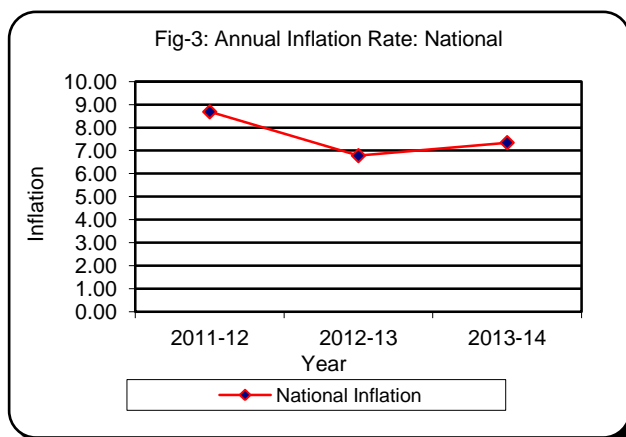


Table 3. Consumer Price Index (CPI) : Rural

(On Monthly Basis)

(2005-06=100)

CPI Classification	2011-12	2012-13	2013-14	2013-14			2014-15		
				Sep'13	Oct'13	Nov'13	Sep'14	Oct'14	Nov'14
General	173.26	183.90	196.90	194.07	195.70	196.43	207.17	208.41	208.32
	<i>8.69</i>	<i>6.14</i>	<i>7.07</i>	<i>1.44</i>	<i>0.84</i>	<i>0.37</i>	<i>1.37</i>	<i>0.60</i>	<i>-0.04</i>
1. Food, beverage & tobacco	183.62	192.14	207.72	204.80	206.89	207.74	220.21	221.59	221.00
	<i>7.50</i>	<i>4.64</i>	<i>8.11</i>	<i>1.78</i>	<i>1.02</i>	<i>0.41</i>	<i>1.75</i>	<i>0.63</i>	<i>-0.27</i>
2. Non-food	156.77	170.79	179.69	177.01	177.91	178.43	186.41	187.45	188.15
	<i>10.96</i>	<i>8.94</i>	<i>5.21</i>	<i>0.81</i>	<i>0.51</i>	<i>0.29</i>	<i>0.68</i>	<i>0.56</i>	<i>0.37</i>
I. Clothing & footwear	164.55	184.54	200.61	194.96	196.82	197.89	212.47	212.98	213.58
	<i>14.66</i>	<i>12.15</i>	<i>8.71</i>	<i>0.90</i>	<i>0.95</i>	<i>0.54</i>	<i>0.92</i>	<i>0.24</i>	<i>0.28</i>
II. Gross rent, fuel & lighting	146.37	157.40	164.05	161.30	161.74	162.43	169.83	170.29	170.59
	<i>9.17</i>	<i>7.54</i>	<i>4.22</i>	<i>0.42</i>	<i>0.27</i>	<i>0.43</i>	<i>0.32</i>	<i>0.27</i>	<i>0.18</i>
III. Furniture, furnishing, household equipments & operation	169.35	186.40	197.62	196.31	196.69	196.89	205.43	206.16	206.51
	<i>9.10</i>	<i>10.07</i>	<i>6.02</i>	<i>1.79</i>	<i>0.19</i>	<i>0.10</i>	<i>0.89</i>	<i>0.36</i>	<i>0.17</i>
IV. Medical care & health expenses	156.87	164.63	168.87	166.20	167.69	168.19	172.24	175.95	179.92
	<i>6.48</i>	<i>4.95</i>	<i>2.58</i>	<i>0.26</i>	<i>0.90</i>	<i>0.30</i>	<i>0.54</i>	<i>2.15</i>	<i>2.26</i>
V. Transport & communication	150.60	160.98	166.01	164.89	165.21	165.46	172.77	173.28	173.77
	<i>20.12</i>	<i>6.89</i>	<i>3.12</i>	<i>0.30</i>	<i>0.19</i>	<i>0.15</i>	<i>1.58</i>	<i>0.30</i>	<i>0.28</i>
VI. Recreation, entertainment, education & cultural services	158.26	174.07	179.72	178.85	179.14	179.18	182.55	183.14	183.32
	<i>4.73</i>	<i>9.99</i>	<i>3.25</i>	<i>0.16</i>	<i>0.16</i>	<i>0.02</i>	<i>0.43</i>	<i>0.32</i>	<i>0.10</i>
VII. Misc. goods & services	168.84	187.05	199.74	197.47	199.70	199.82	205.19	208.32	208.76
	<i>12.43</i>	<i>10.79</i>	<i>6.78</i>	<i>2.21</i>	<i>1.13</i>	<i>0.06</i>	<i>0.23</i>	<i>1.53</i>	<i>0.21</i>

Note : Figures in italics indicate inflation over previous year/month

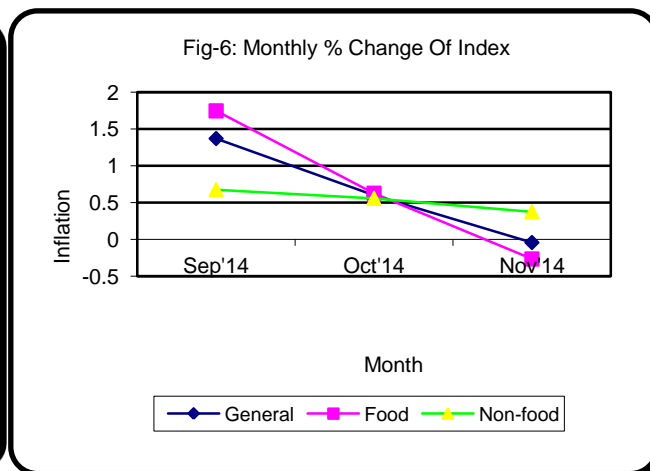
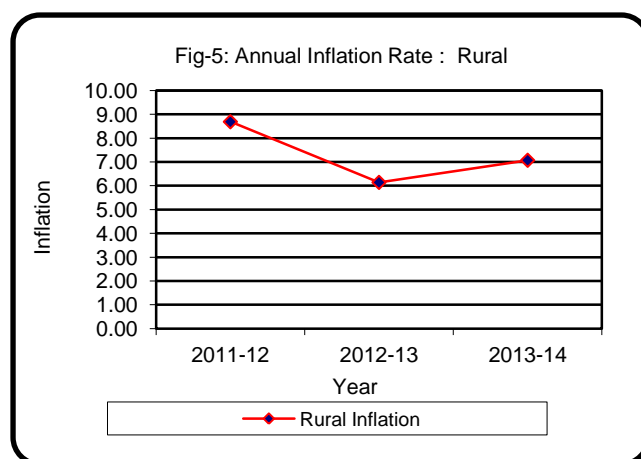


Table 4. Consumer Price Index (CPI) : Urban

(On Monthly Basis)

(2005-06=100)

CPI Classification	2011-12	2012-13	2013-14	2013-14			2014-15		
				Sep'13	Oct'13	Nov'13	Sep'14	Oct'14	Nov'14
General	164.52	177.71	191.73	188.86	190.88	191.69	202.11	203.84	204.16
	<i>8.69</i>	<i>8.02</i>	<i>7.89</i>	<i>1.55</i>	<i>1.07</i>	<i>0.42</i>	<i>1.49</i>	<i>0.86</i>	<i>0.16</i>
1. Food , beverage & tobacco	183.71	195.91	214.85	211.94	215.03	216.34	228.65	230.66	230.65
	<i>8.27</i>	<i>6.64</i>	<i>9.67</i>	<i>2.04</i>	<i>1.46</i>	<i>0.61</i>	<i>2.03</i>	<i>0.88</i>	<i>0.00</i>
2. Non-food	147.84	161.88	171.61	168.78	169.87	170.24	179.03	180.51	181.12
	<i>9.16</i>	<i>9.50</i>	<i>6.01</i>	<i>1.01</i>	<i>0.65</i>	<i>0.22</i>	<i>0.90</i>	<i>0.83</i>	<i>0.34</i>
I. Clothing & footwear	153.65	170.39	183.66	181.09	182.39	183.29	194.80	195.45	195.87
	<i>15.02</i>	<i>10.89</i>	<i>7.79</i>	<i>1.41</i>	<i>0.72</i>	<i>0.49</i>	<i>0.83</i>	<i>0.33</i>	<i>0.21</i>
II. Gross rent, fuel & lighting	139.88	153.55	162.80	157.46	159.10	159.21	171.14	171.24	171.36
	<i>7.35</i>	<i>9.77</i>	<i>6.02</i>	<i>0.15</i>	<i>1.04</i>	<i>0.07</i>	<i>0.15</i>	<i>0.06</i>	<i>0.07</i>
III. Furniture, furnishing, household equipments & operation	186.54	211.03	221.11	220.07	220.26	221.11	219.31	221.93	222.44
	<i>14.26</i>	<i>13.13</i>	<i>4.78</i>	<i>0.99</i>	<i>0.09</i>	<i>0.39</i>	<i>0.05</i>	<i>1.19</i>	<i>0.23</i>
IV. Medical care & health expenditure	145.37	151.15	155.82	155.09	155.39	155.62	160.20	163.91	168.12
	<i>3.98</i>	<i>3.98</i>	<i>3.09</i>	<i>0.99</i>	<i>0.19</i>	<i>0.15</i>	<i>1.66</i>	<i>2.32</i>	<i>2.57</i>
V. Transport & communication	146.34	157.53	168.52	167.27	167.46	168.22	182.89	186.53	187.63
	<i>12.81</i>	<i>7.65</i>	<i>6.98</i>	<i>2.36</i>	<i>0.11</i>	<i>0.45</i>	<i>3.40</i>	<i>1.99</i>	<i>0.59</i>
VI. Recreation, entertainment, education & cultural services	129.61	139.06	147.83	146.63	148.27	148.30	150.18	150.58	150.66
	<i>2.05</i>	<i>7.29</i>	<i>6.31</i>	<i>0.71</i>	<i>1.12</i>	<i>0.02</i>	<i>0.58</i>	<i>0.27</i>	<i>0.05</i>
VII. Misc. goods & services	159.31	176.96	186.37	185.43	186.31	186.42	191.42	194.53	194.63
	<i>8.50</i>	<i>11.08</i>	<i>5.32</i>	<i>1.82</i>	<i>0.47</i>	<i>0.06</i>	<i>0.76</i>	<i>1.62</i>	<i>0.05</i>

Note : Figures in italics indicate inflation over previous year/month

