

**MONTHLY RELEASE**  
**Foreign Trade Statistics**  
**Bangladesh Bureau of Statistics**

**February-2015**

Compilation and dissemination of Foreign Trade Statistics (FTS) is one of the core activities of Bangladesh Bureau of Statistics (BBS). Considering the importance of FTS, BBS has been compiling and publishing it on an annual basis since 1973-74. Since February 2007, BBS has been publishing **Monthly Release** on FTS to satisfy the users' need. It is an outcome of the BBS efforts towards the improvement of FTS.

This monthly release is based on the data available from National Board of Revenue (NBR) and Bangladesh Bank (BB). NBR provides export and import data on goods while BB provides such data on services. We are thankful to NBR and BB which have continued to help us in providing data in bringing out this publication.

Data presented in this publication are provisional and subject to revision. All these provisional data will be subsequently reviewed and revised. The revised data will be presented in the upcoming issues.

I firmly believe this publication will play a significant role as an effective market research tool to planners, policy makers, researchers, the business community and others. Comments and suggestions from users regarding any inclusion, omission or presentation of data for improvement of the publication are most welcome.

I would like to express my heartfelt thanks to Mr. Abul Kalam Azad, Director Mr. Md. Shahabuddin Sarker, Deputy Director, Shahanaz Begum, Assistant Statistical Officer, BBS and all other officers and staffs of Foreign Trade Section for their relentless effort to make the publication possible.

**Md. Baitul Amin Bhuiyan**  
(Additional Secretary)  
**Director General (Addl. Charge)**

### **Total Trade (Goods & Services)**

In February,2015, total export and import of goods and services were recorded at Tk.212.32 billion and Tk.310.95 billion respectively resulting in a trade deficit of goods and services decreased by Tk.98.63 billion. The growth of export and import in February,2015 is decreased by 10.30 and decreased by 12.76 percent respectively comparing to January,2015 and it has increased by 249.67 and increased by 99.75 percent respectively comparing to February,2014.

#### **Goods**

In February,2015, the trade deficit for goods appeared to Tk. 91.51 billion as against Tk.74.23 billion in January, 2014. The export of goods in February,2015 have decreased by 11.45 over against that in January, 2015 and the import of goods in February,2015 have decreased by 2.68% as compared to that in January, 2015.The exports of goods in February,2015 is Tk.194.57 billion as against Tk. 41.33 billion in February,2014.The import of goods in February,2015, is Tk.286.08 billion as against Tk. 115.24 billion in February,2014.

#### **Services**

In February,2015, the trade deficit for services stands to Tk. 7.12 billion as against Tk. 45.51 billion in January, 2015. The export of services in February,2015 has increased by 4.60 percent while the import of services during the period has decreased by 60.20 percent as compared with that in January, 2015. The export of services in February,2015 is Tk. 17.75 billion which was Tk. 19.39 billion in February,2014. On the other hand the import of services in February,2015 is Tk.24.87 billion as against Tk. 40.43 billion in February,2014.

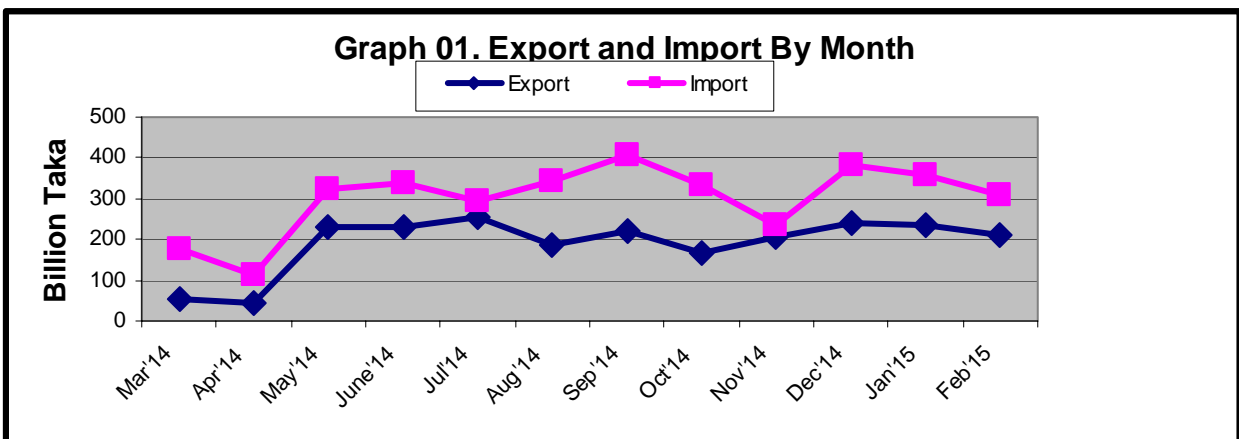
### **Three months Moving Average of export and import**

For the three months ending in February,2015the moving average of exports of goods and services was Tk. 230.17 billion, while the moving average of imports of goods and services was Tk.350.20 billion resulting in an average trade deficit of Tk. 120.03 billion. For the three months ending in January, 2015 the average trade deficit was Tk.96.38 billion, reflecting average export of Tk. 228.06 billion and average imports of Tk. 324.44 billion.

**Table 1: Export, import and trade deficits**

(In billion taka)

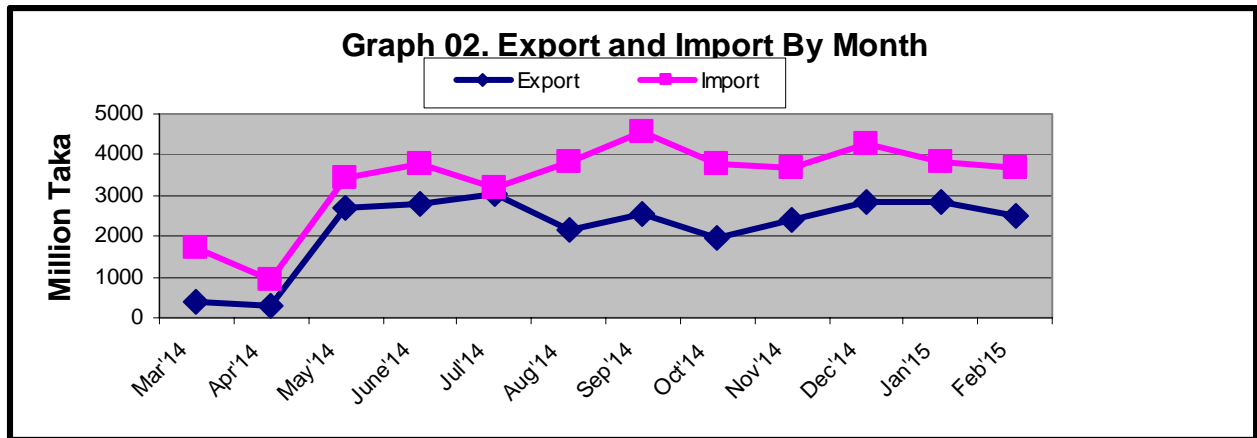
	Export			Import			Trade balance		
	Total	Goods	Services	Total	Goods	Services	Total	Goods	Services
<b>2012-13</b>	<b>2474.06</b>	<b>2268</b>	<b>205.66</b>	<b>3158.51</b>	<b>3144.27</b>	<b>514.24</b>	<b>-1063.73</b>	<b>-876.27</b>	<b>-308.68</b>
<b>2013-14</b>	<b>1997.18</b>	<b>1749.09</b>	<b>248.09</b>	<b>2998.30</b>	<b>2379.40</b>	<b>574.53</b>	<b>-1001.12</b>	<b>-674.66</b>	<b>-326.44</b>
<b>2014-15</b>									
Mar-14	54.21	28.72	25.49	178.50	128.45	50.05	-124.29	-99.73	-24.56
Apr-14	43.69	23.28	20.41	113.98	67.92	46.06	-70.29	-44.64	-25.65
May-14	231.90	209.85	22.05	324.61	263.14	61.47	-92.71	-53.29	-39.42
June-14	232.59	216.60	15.99	339.29	288.34	50.93	-106.70	-71.74	-34.94
July-14	253.35	233.87	19.48	295.12	242.30	52.82	-41.77	-8.49	-33.34
Aug-14	187.10	166.00	21.10	344.14	292.00	52.14	-157.04	-126.00	-31.04
Sep-14	218.78	198.19	20.59	405.82	348.96	56.06	-187.04	-150.77	36.27
Oct-14	164.37	149.77	14.60	334.51	290.00	44.51	-170.14	-140.23	-29.91
Nov-14	206.00	185.98	20.02	233.69	282.23	51.46	-27.69	-96.25	-31.44
Dec-14	241.49	219.43	22.06	383.20	325.87	57.33	-141.71	-106.44	-35.27
Jan-15	236.70	219.73	16.97	356.44	293.96	62.48	-119.74	-74.23	-45.51
Feb-15	212.31	194.57	17.75	310.95	286.08	24.87	-98.63	-91.51	-7.12



**Table 2: Export, import and trade deficits**

(In million US \$)

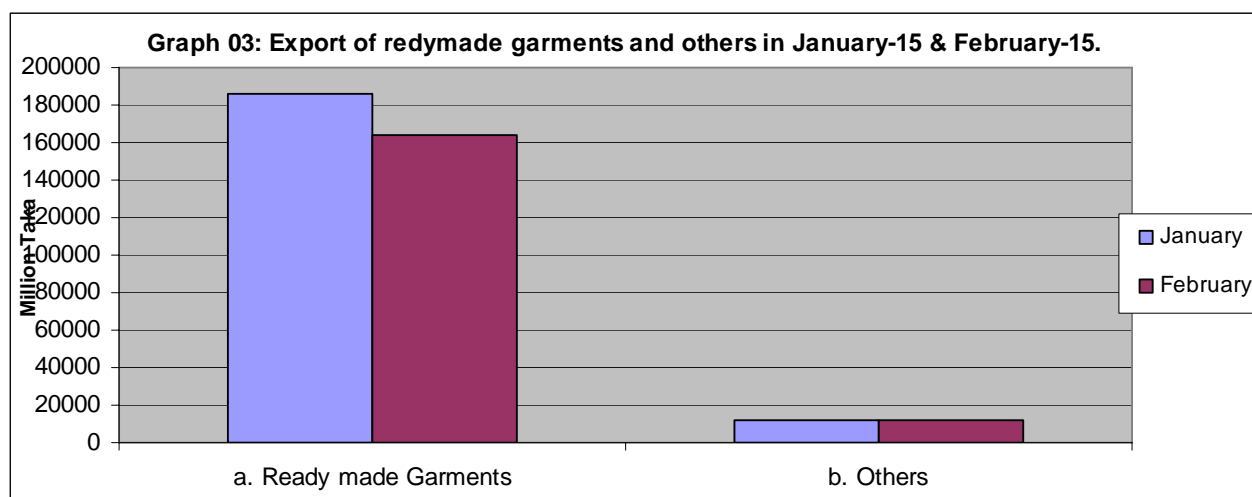
Period	Export			Import			Trade balance		
	Total	Goods	Service	Total	Goods	Service	Total	Goods	Service
<b>2012-13</b>	<b>28853</b>	<b>28651</b>	<b>202</b>	<b>40257</b>	<b>39752</b>	<b>505</b>	<b>-11404</b>	<b>-11101</b>	<b>-303</b>
<b>2013-14</b>	<b>22623</b>	<b>22376</b>	<b>247</b>	<b>31577</b>	<b>31005</b>	<b>572</b>	<b>-8954</b>	<b>-8629</b>	<b>-325</b>
<b>2014-15</b>									
Mar-14	392	367	25	1693	1643	50	-1301	-1276	-25
Apr-14	318	298	20	915	869	46	-597	-571	-26
May-14	2706	2684	22	3426	3365	61	-720	-681	-39
Jun-14	2806	2790	16	3765	3714	51	-959	-924	-35
Jul-14	3029	3010	19	3172	3119	53	-143	-109	-34
Aug-14	2163	2142	21	3812	3760	52	-1649	-1618	-31
Sep-14	2572	2551	21	4549	4492	57	-1977	-1941	-36
Oct-14	1943	1928	15	3778	3733	45	-1835	-1805	-30
Nov-14	2398	2378	20	3660	3609	51	-1262	-1231	-31
Dec-14	2847	2825	22	4252	4195	57	-1405	-1370	-35
Jan-15	2827	2810	17	3821	3759	62	-994	-949	-45
Feb-15	2506	2488	18	3683	3658	25	-1177	-1170	-7



**Table 3. Percent change from the previous month (goods)**

(In million taka)

Items	2014-15		
	Jan'15	Feb'15	Percent change from the previous month
<b>1. Export (Commodities )</b>	219730	194567	-11.45
1. Ready made Garments	185729	163844	-11.78
2. Shrimps and prawn	2644	2106	-20.35
3. Vegetable textiles fiber/ yarn	4214	4728	12.20
4. Made-up textiles articles	6603	5868	-11.13
5. Raw hides, skins & leathers	2530	1942	-23.24
6. Raw jute	680	647	-4.85
7. Footwear Special woven fabrics	4649	3145	-32.35
8. Fertilizer	-	4	-
9. Hats and other head gear	327	335	2.45
10. Special woven fabrics	351	253	-27.92
11. Others	12003	11695	-2.57
<b>2. Import (Commodities)</b>	<b>293955</b>	<b>286085</b>	<b>-2.68</b>
1. Machinery & parts	30114	26528	-11.91
2. Petroleum product and oil	26997	27512	1.91
3. Electric Machinery	13332	12858	-3.56
4. Soya bean and Palm oil	27942	20185	-27.76
5. Raw cotton	15434	13142	-14.85
6. Textile fabrics	621	899	44.77
7. Iron and steel	18885	12286	-34.94
8. Plastics and articles	12045	9608	-20.23
9. Wheat	2917	5039	72.75
10. Fertilizer	10174	5172	-49.16
11. Others	135494	152856	12.81
<b>3. Trade balance (1-2)</b>	<b>-74225</b>	<b>-91518</b>	<b>23.30</b>



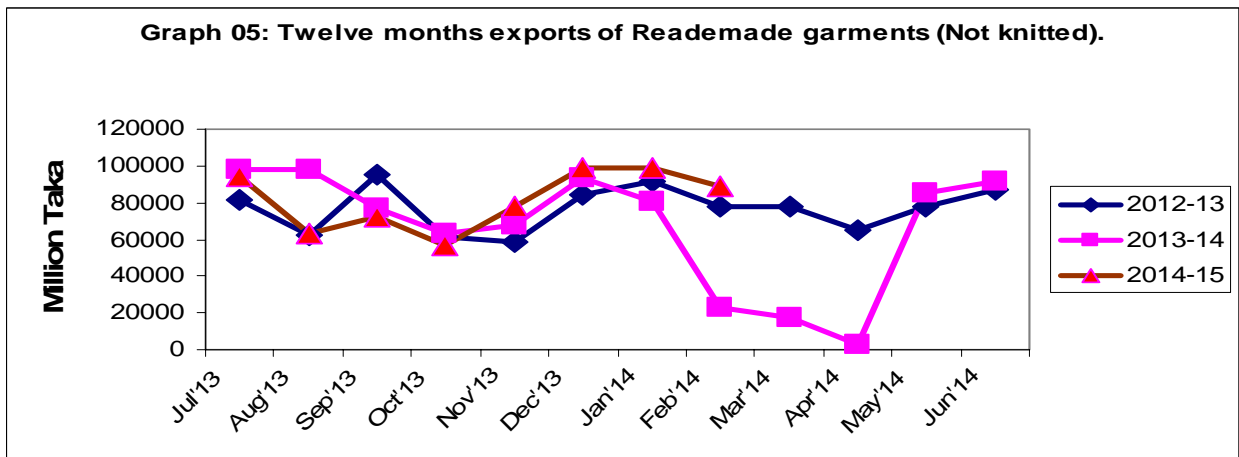
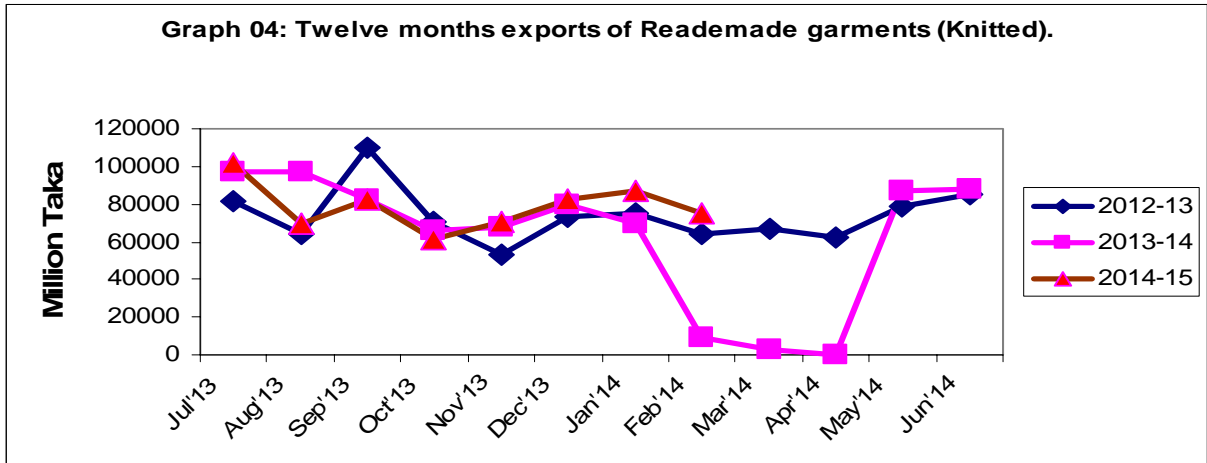
**Table 4. Import of Essential Commodities Quantity in M. Ton**  
(In million taka)

Items	2014-15			
	Jan'15	Feb'15	Percent change from the previous month	Cumulative (February'15)
<b>Import (Commodities)</b>				
1. Raw sugar	826	218837	26393.58	1160857
2. Palm oil	342938	219838	-35.90	1768115
3. Soya bean oil	151848	126217	-16.88	754790
4. Milk & Cream	10498	7326	-30.22	55700
5. Ginger	1484	1961	32.14	6850
6. Chillies	-	-	-	
7. Wheat	140749	223986	59.14	1878601
8. Rice	140103	182530	30.28	990711
9. Lentil & other	5541	37520	577.13	127021
10. Onion	39965	37699	-5.67	333542
11. Garlic	8103	8005	-1.21	58074
12. Tea	448	1135	153.35	2270
13. Oil seed	29510	167083	466.19	474914

**Table 5: Twelve months export of readymade garments during 2012-13 to 2014-15**

(In million taka)

Month	Ready made Garments (Knitted)			Ready made Garments (Not Knitted)		
	2012-13	2013-14	2014-15	2012-13	2013-14	2014-15
July	81856	97489	101485	81278	98123	93914
August	64571	97489	69664	62748	98123	63171
September	109983	82254	82360	94910	76541	72051
October	70847	66362	60953	61730	63406	56604
November	53225	67407	70801	58705	68236	77444
December	73265	79771	82837	84186	93450	98742
January	75300	69682	86721	91743	80387	99008
February	64184	9504	74703	77630	23258	89141
March	67207	2748		78189	16967	
April	61944	54		65012	2758	
May	78773	86610		77746	84796	
June	84982	87795		87379	91874	

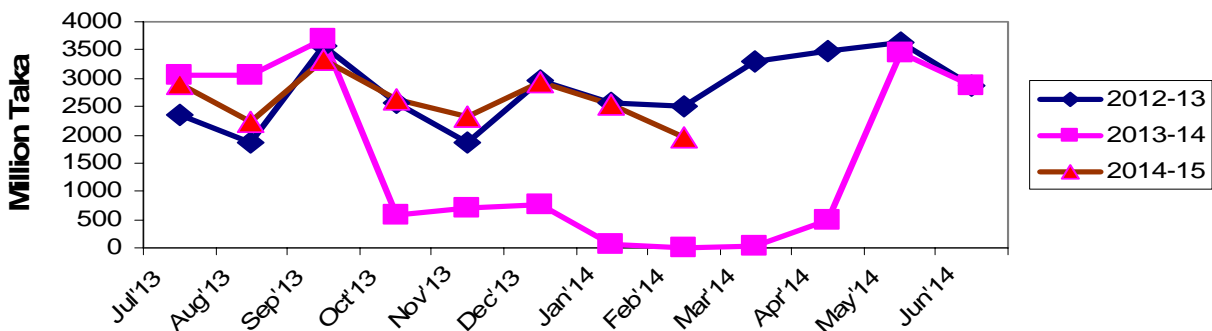


**Table 6: Twelve months export of raw hides, skins & leather, 2012-13 to 2014-15**

(In million taka)

	Raw hides, skins & leather		
	2012-2013	2013-14	2014-15
July	2347	3065	2899
August	1870	3065	2230
September	3568	3699	3342
October	2560	567	2637
November	1854	691	2335
December	2970	767	2930
January	2569	47	2530
February	2515	12	1942
March	3304	37	
April	3494	498	
May	3631	3454	
June	2869	2864	

**Graph 06: Twelve months exports of Raw h9ides, skins & leather**

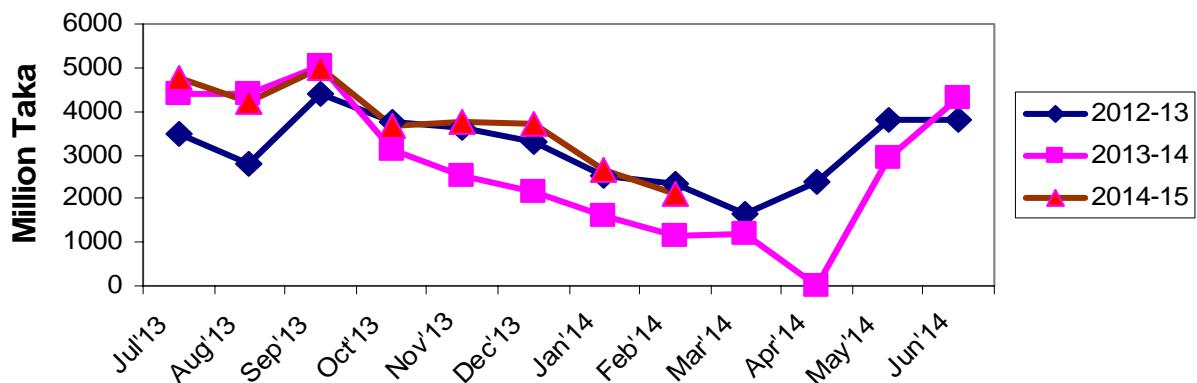


**Table 7: Twelve months export of shrimps and prawn, 2012-13 to 2014-15.**

(In million taka)

Month	Shrimps and prawn		
	2012-13	2013-14	2014-15
July	3466	4397	4774
August	2772	4397	4199
September	4415	5048	4997
October	3756	3121	3674
November	3609	2518	3738
December	3314	2148	3723
January	2502	1596	2644
February	2353	1144	2106
March	1634	1209	
April	2384	-	
May	3811	2926	
June	3802	4324	

**Graph 07: Twelve months exports of Shrimps & prawn.**

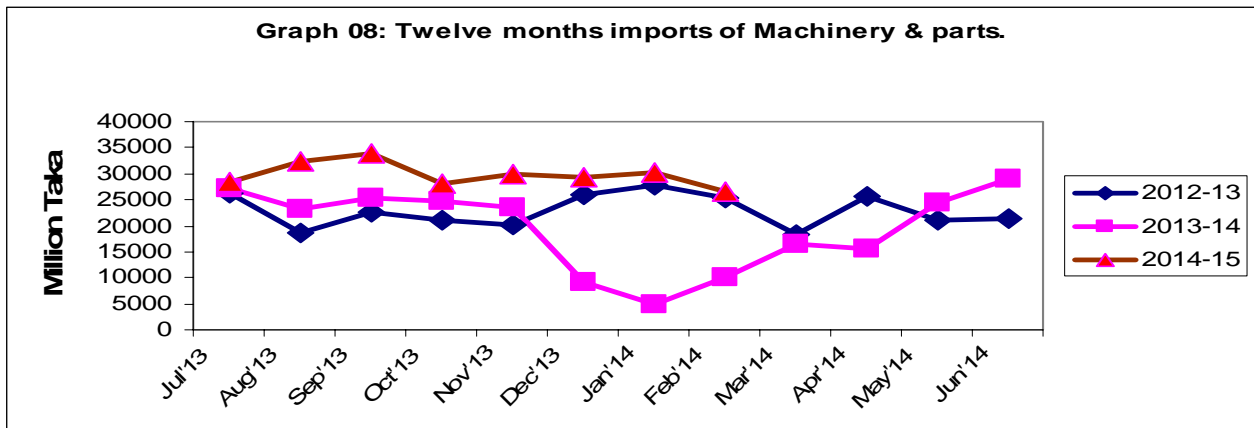


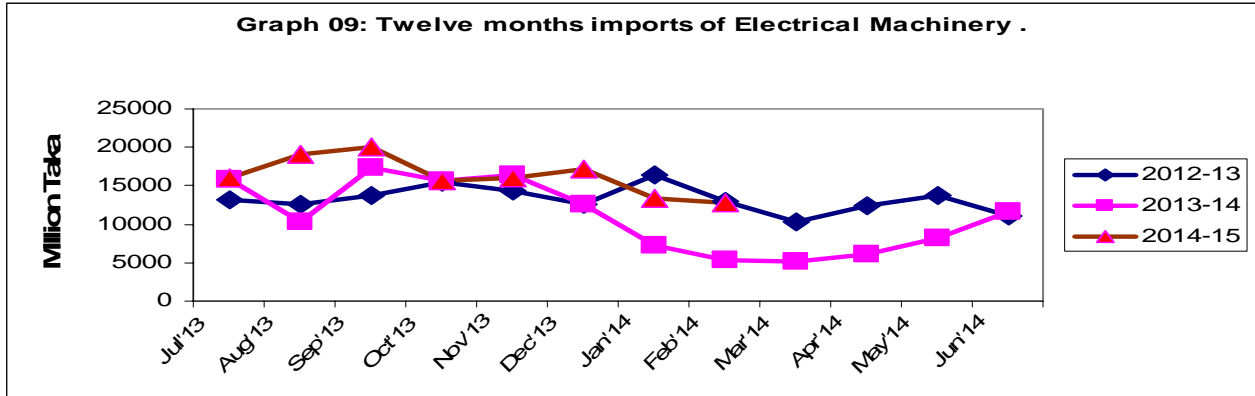


**Table 8: Twelve months import of machinery & parts and electrical machinery during 2012-13 to 2014-15.**

(In million taka)

Month	Machinery & Parts			Electrical Machinery		
	2012-13	2013-14	2014-15	2012-13	2013-14	2014-15
July	26239	27309	28289	13145	15767	16083
August	18678	23121	32463	12567	10324	19161
September	22617	25435	33942	13682	17442	20119
October	21001	24749	28228	15485	15713	15598
November	20238	23438	29911	14283	16380	15966
December	25979	9039	29267	12551	12552	17134
January	27802	5035	30114	16400	7308	13332
February	25296	10190	26528	12931	5330	12858
March	18472	16604		10321	5233	
April	25543	15501		12333	6059	
May	21107	24465		13777	8147	
June	21471	28898		11112	11591	

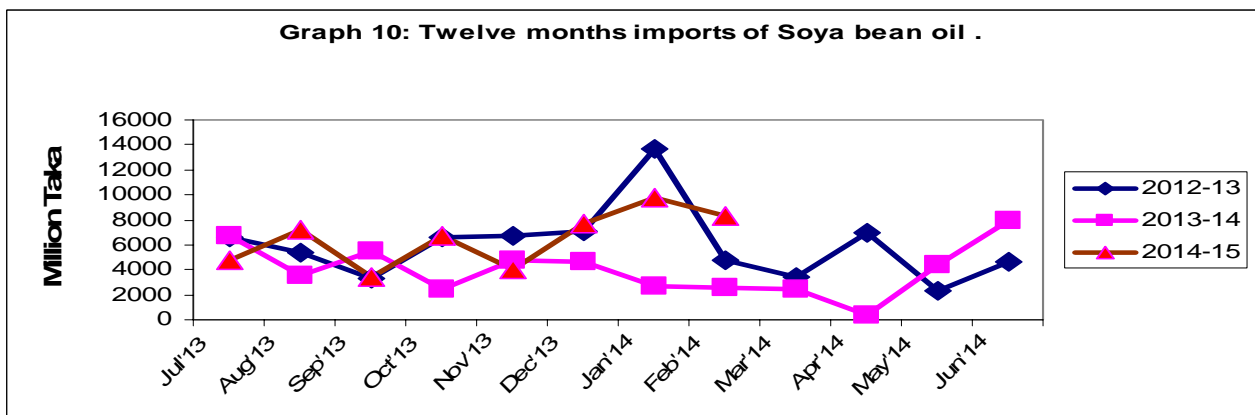


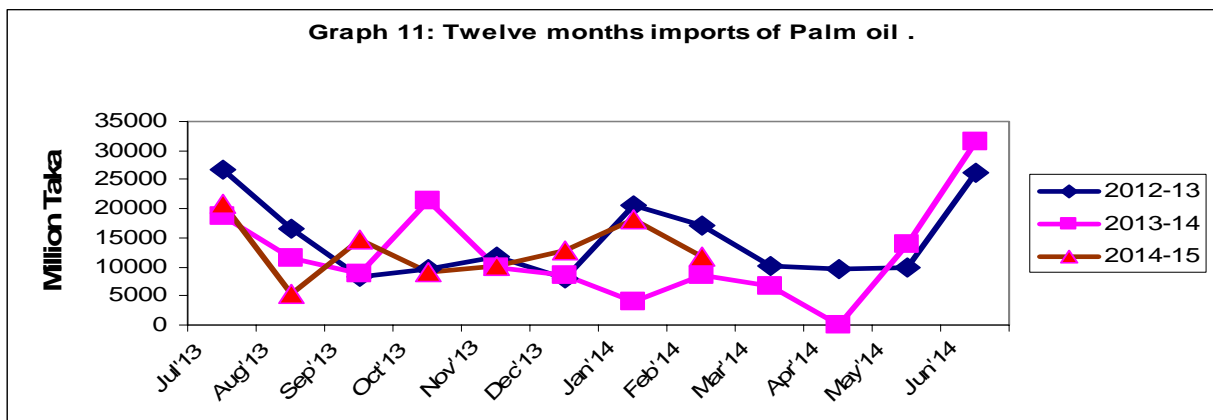


**Table 9: Twelve months imports of Soya bean and Palm oil during 2012-13 to 2014-15**

(In million taka)

Month	Soya bean			Palm Oil		
	2012-13	2013-14	2014-15	2012-13	2013-14	2014-15
July	6626	6695	4812	26621	18660	20866
August	5367	3484	7149	16609	11355	5369
September	3346	5481	3419	8373	8870	14583
October	6581	2428	6757	9621	21280	9185
November	6669	4793	3994	11868	9756	10064
December	7045	4626	7638	7951	8666	12918
January	13699	2667	9814	20540	4092	18128
February	4774	2590	8311	16991	8520	11874
March	3399	2444		10186	6741	
April	6996	414		9690	77	
May	2287	4446		9935	13766	
June	4590	7908		26090	31529	

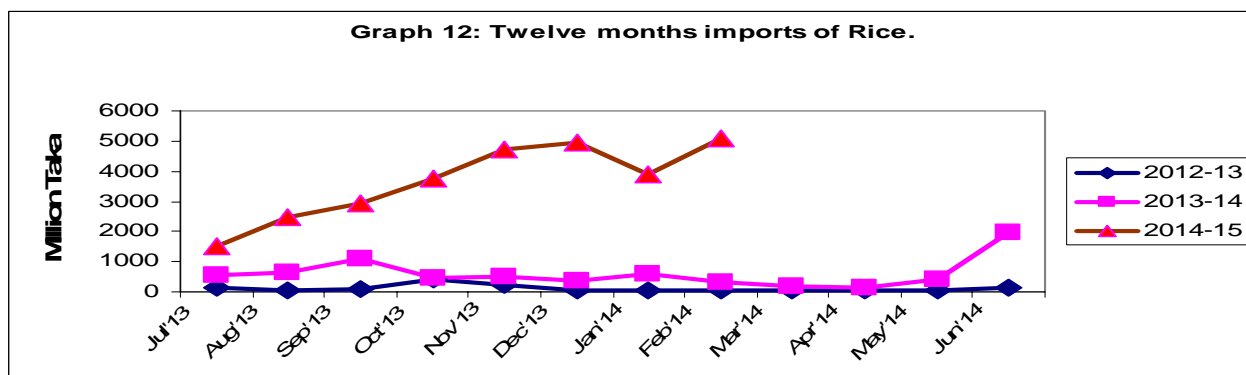


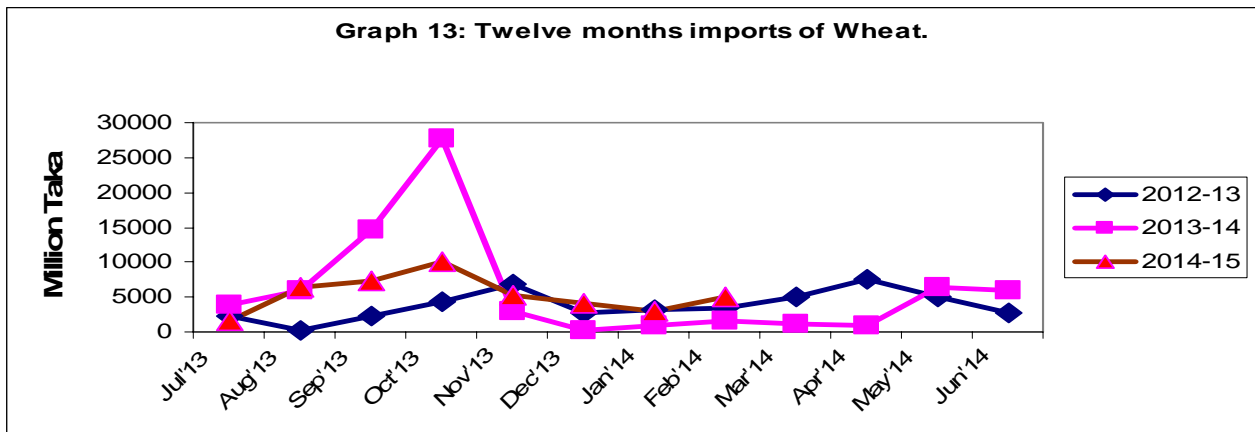


**Table 10: Twelve months import of rice and wheat during 2012-13 to 2014-15**

(In million taka)

Month	Rice			Wheat		
	2012-13	2013-14	2014-15	2012-13	2013-14	2014-15
July	155	569	1489	2287	3838	1611
August	62	661	2492	332	5903	6300
Sep	82	1101	2939	2351	14754	7266
Oct	407	455	3743	4444	27770	10175
Nov	223	516	4722	6933	2943	5291
Dec	26	386	4932	2640	313	4202
Jan	56	617	3887	3157	976	2917
Feb	59	336	5073	3459	1495	5039
Mar	24	184		5039	1139	
April	63	142		7652	965	
May	38	414		5117	6484	
June	125	1954		2700	5912	

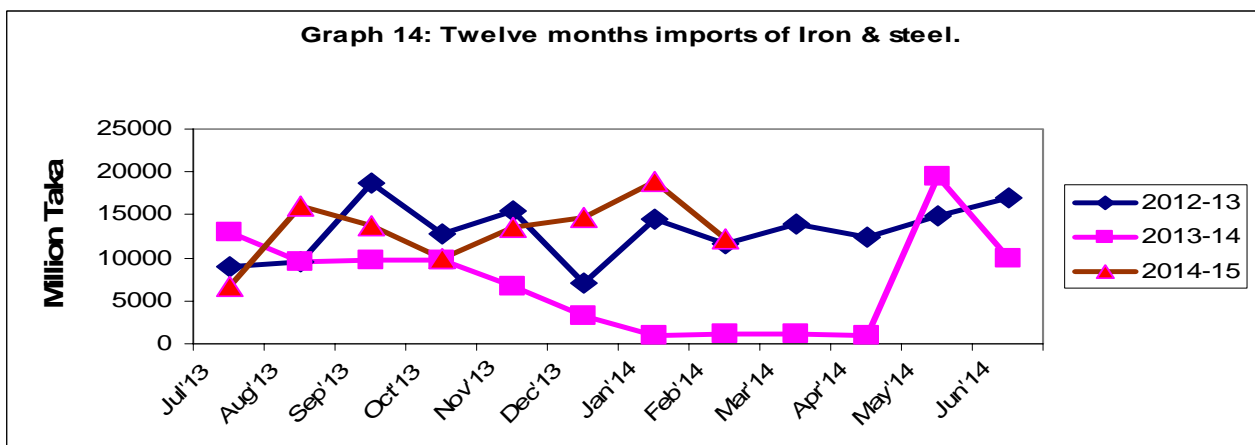


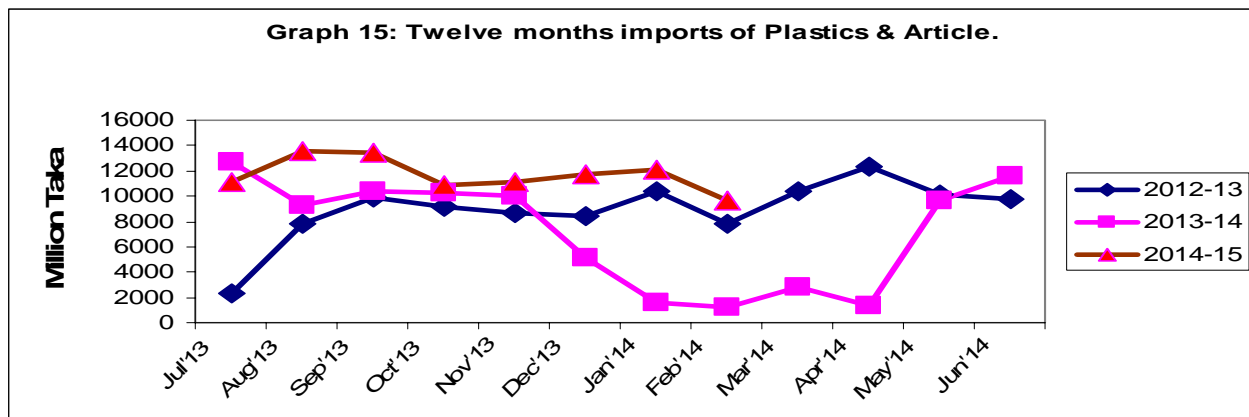


**Table 11: Twelve months import of iron & steel and plastics & articles during 2012-13 to 2014-15**

(In million taka)

Month	Iron & Steel			Plastics & articles		
	2012-13	2013-14	2014-15	2012-13	2013-14	2014-15
July	9059	12931	6683	2287	12670	11174
August	9455	9499	16007	7781	9296	13502
September	18745	9713	13734	9940	10343	13403
October	12691	9793	9949	9127	10268	10867
November	15499	6710	13530	8720	10039	11119
December	7038	3225	14663	8438	5171	11716
January	14420	1008	18885	10440	1608	12045
February	11548	1211	12286	7846	1246	9608
March	13913	1232		10417	2837	
April	12425	879		12307	1373	
May	14867	19504		10168	9672	
June	16949	9882		9729	11572	





**Table 12. Point to point percent change in external trade (goods)**

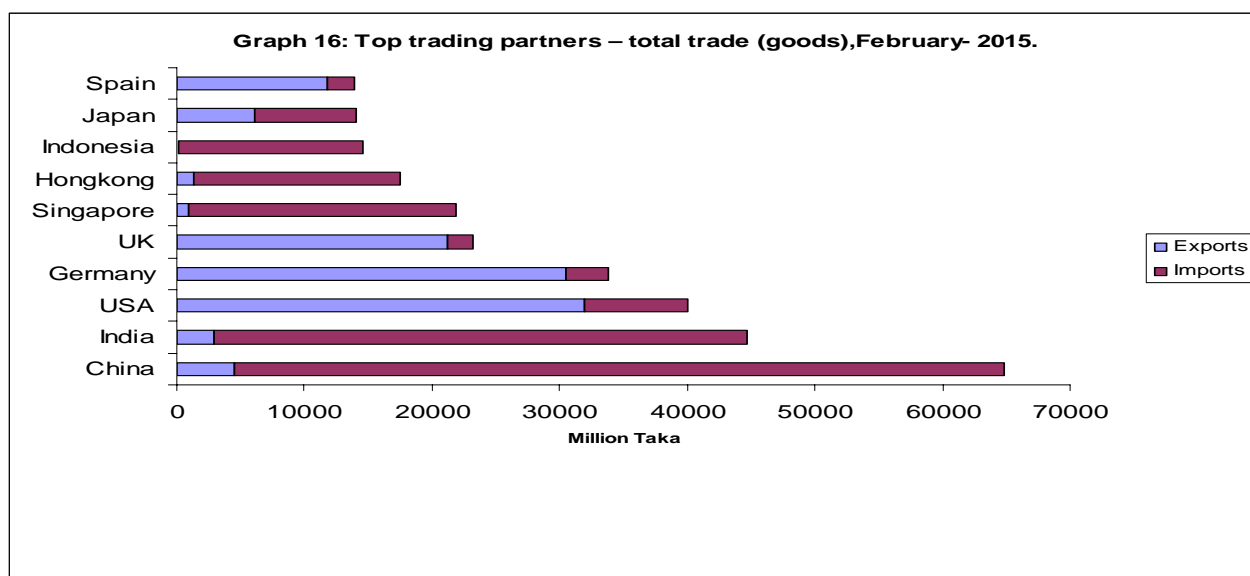
(In million taka)

Items	December-February			February		
	2013-14	2014-15	Change in Percent	2013-14	2014-15	Change in Percent
1. Export(Commodities )	440545	540532	18.50	41327	194567	78.76
2. Import (Commodities)	661838	558231	1856	115241	286085	59.72
3. Trade balance(1-2)	-221293	-17699	-06	-73914	-91518	19.04

**Table13. Top trading partners – total trade (goods) February-2015**

(In million taka)

Country	Exports	Imports	Total	Rank	Percent of Total Trade
China	4517	60307	64824	1	13.49
India	2939	41697	44636	2	9.29
USA	31919	8139	40058	3	8.33
Germany	30497	3343	33840	4	7.04
UK	21237	1980	23217	5	4.83
Singapore	963	20894	21857	6	4.55
Hongkong	1277	16177	17454	7	3.63
Indonesia	154	14369	14523	8	3.02
Japan	6081	7912	13993	9	2.91
Spain	11770	2098	13868	10	2.89



**Table 14. Top trading partners – exports (goods), February -2015**  
(In million taka)

Country	Export	Rank	Percent of Total Export
USA	34919	1	17.95
Germany	30497	2	15.67
UK	21237	3	10.92
Spain	11770	4	6.05
France	8927	5	4.59
Italy	8151	6	4.19
Canada	6533	7	3.36
Japan	6081	8	3.13
Belgium	6044	9	3.11
Netherland	5104	10	2.62

**Table 15. Top trading partners – imports (goods), February -2015**

(In million taka)

Country	Import	Rank	Percent of Total Import
China	60307	1	21.08
India	41697	2	14.58
Singapore	20894	3	7.30
Hong kong	19177	4	6.70
Indonesia	14369	5	5.02
Korea Rep	9311	6	3.25
UK	8139	7	2.84
Japan	7912	8	2.77
Malaysia	7576	9	2.65
Taiwan	7507	10	2.62

**Table 16. Monthly merchandise export (2 digit HS code)**

HS Code	Commodities	2014-15		(In million taka)
		Jan'15	Feb'15	% change from previous month
1	Live animals	1.03	-	-
2	Meat and edible meat offal	10.29	-	-
3	Fishes, crustacean and other aquatic	3169.67	2470.26	-22.07
4	Dairy produces edible product of animal origin.	11.30	6.73	-40.44
5	Products of animal origin	163.01	78.83	-51.64
6	Live tree and other plants etc.	53.22	39.47	-25.84
7	Edible vegetables, roots as tubers	640.91	649.76	1.38
8	Edible fruits and nuts citrus fruits	2.97	94.46	3080.47
9	Coffee, tea, mate and spices	158.01	147.82	-6.45
10	Cereals	26.22	35.28	34.55
11	Product of milling industry : malt etc.	5.82	5.30	-8.93
12	Oil seeds and oleaginous fruits	145.76	93.77	-35.67
13	Lac, gum resin vegetable sap/ extract	.77	.98	27.27
14	Vegetable plaiting materials	332.23	212.79	-35.95
15	Animal or vegetable fats and oils	40.41	90.96	125.09
16	Preparations of meat or fish etc.	26.92	31.03	15.27
17	Sugar and sugar confectionery	55.63	48.27	-13.23
18	Cocoa and cocoa preparations	3.34	1.13	-66.17
19	Preparations of cereals, flour, starch etc.	520.53	558.84	7.36
20	Preparations of vegetable fruits, nuts, etc.	372.90	446.11	19.63
21	Misc. edible preparations	.58	.51	-12.07
22	Beverages, spirits and vinegar	142.03	172.45	21.42
23	Residues & waste from the food industry	6.10	7.97	30.66
24	Tobacco mfg tobacco substitutes	212.40	119.15	-43.90
25	Salt, sulph etc. & plastering metals stone cement	29.88	20.58	-31.12
26	Ores, slag and ash	61.84	6.25	-89.89
27	Mineral, fuels/oils etc.	314.47	398.29	26.65
28	Inorganic chem.comp of specious metals etc.	359.28	76.63	-78.67
29	Organic chemicals	3.33	1.77	-46.85
30	Pharmaceutical products	339.84	452.89	33.27
31	Fertilizers	-	4.24	-
32	Tanning/dyeing ext; dye pigments etc.	3.69	1.78	-51.76
33	Essential oils, perfumery/toilet pre.	1.41	6.03	327.66



**Table 16. Monthly merchandise export (2 digit HS code)**

(in million taka)

HS Code	Commodities	2014-15		% change from previous month
		Jan'15	Feb'15	
34	Soap, organic Surface-active agents etc.	11.25	13.86	23.20
35	Albuminoidal substitute starches, glues etc.	17.58	.14	-99.20
36	Explosive pyrotechnic products	-	-	-
37	Photographic/cinematographic goods	-	-	-
38	Miscellaneous chem. products	28.96	12.31	-57.49
39	Plastics and articles thereof	492.69	616.61	25.15
40	Rubber and articles thereof	150.01	110.40	-26.40
41	Raw hides & skins, leather	2530.29	1941.89	-23.25
42	Articles of Leather/Animal Gut	1615.55	1311.21	-18.84
43	Fur skins & artificial fur. Mfg.	-	-	-
44	Wood & art. of wood; wood charcoal	26.83	20.96	-21.88
45	Cork and articles of cork	-	-	-
46	Manufactures of straw etc.	59.84	51.02	-14.74
47	Pulp/ wood/fibrous cellulose materials etc.	-	-	-
48	Paper & paper board; art. P. pulp etc.	223.64	181.35	-18.91
49	Printed books, news papers, pictures etc.	9.61	2.21	-77.00
50	Silk	-	.45	-
51	Wool, fine/coarse animal hair etc.	5.65	5.96	5.49
52	Cotton	533.48	658.18	23.37
53	Other vegetable, Textile fibres, paper/yarn etc	4214.19	4728.00	12.19
54	Man-made filaments	201.58	208.91	3.64
55	Man-made staple fibres	209.39	220.45	5.28
56	Wadding felts nonwovens, special yarn etc.	127.16	138.20	8.68
57	Carpet other text. floor coverings	113.94	122.70	7.69
58	Special woven fabrics, tufted tex.fabrics etc.	350.72	253.23	-27.80
59	Impregnated, coated, textile fabrics etc.	91.26	82.77	-9.30
60	Knitted or crocheted fabrics	216.54	269.33	24.38
61	Article of appl. clothing accesso. knit / crocht.	86720.67	74703.07	-13.86
62	Article of appl. clothing accesso. knit/	99007.74	89141.76	-9.96
63	Other made up textile articles etc.	6602.69	5868.24	-11.12
64	Footwear, gaiter & like etc.	4649.21	3144.92	-32.36
65	Headgear and parts thereof	386.46	417.30	7.98

**Table 16. Monthly merchandise export (2 digit HS code)**

(In million taka)

HS Code	Commodities	2014-15		% change from previous month
		Jan'15	Feb'15	
66	Umbrellas, sun umbrellas, walk sticks etc.	-	-	-
67	Prepared feathers & down/articles etc.	72.50	105.20	45.10
68	Art of stone, plastic, cement etc.	-	.-	-
69	Ceramic products	260.93	256.95	-1.53
70	Glass and glassware	8.32	12.69	52.52
71	Natural/culture pearls precious stones etc.	24.81	10.45	-57.88
72	Iron or steel	193.78	129.87	-32.98
73	Articles of iron or steel	98.55	71.89	-27.05
74	Copper and articles thereof	110.84	102.55	-7.48
75	Nickel and articles thereof	6.20	-	-
76	Aluminum and article thereof	6.64	9.34	40.66
78	Lead and articles thereof	187.66	258.47	37.73
79	Zinc and articles thereof	4.39	34.49	685.65
80	Tin and articles thereof	-	-	-
81	Other base metals, cermets etc.	-	-	-
82	Tools, cutlery Spon base Metl Part	21.77	53.50	145.75
83	Miscellaneous art of base metal.	.54	.29	-46.30
84	Nuclear reactors, boilers etc.	582.83	415.85	-28.65
85	Electrical mach. & equipment, parts etc.	361.05	392.37	8.67
86	Rail/tramway locomotives etc.	9.27	4.40	-52.54
87	Vehicles, other than rail/tram way's & parts etc.	1007.51	1094.44	8.63
88	Aircraft, space craft and parts.	.76	168.93	22127.63
89	Ships, boats & floating structures	.22	.97	340.91
90	Optical,photo,cinematgph.Medical inst.etc.	379.29	303.68	-19.93
91	Clocks & watches & parts	3.29	10.04	205.17
92	Musical /instruments and parts etc.	-	-	-
93	Arms, & ammunition and parts & accessories	-	-	-
94	Furniture, bedding, mattresses etc.	316.38	334.55	5.74
95	Toys, games & sports requisites & parts	165.23	210.44	27.36
96	Miscellaneous mfg. articles	91.37	78.49	-14.10
97	Works/ art, collectors & antiques	2.35	-	-
98	Goods Commodities NEC	.87	1.43	64.37
	<b>Grand Total</b>	<b>219730.11</b>	<b>194567.04</b>	<b>-11.45</b>

**Table 17. Monthly export of major commodities (4 digits)**

(In million taka)

H S Code	Commodities	2014-15		% change from previous month
		Jan'15	Feb'15	
303	Fish frozen	331.75	229.20	-30.91
304	Fish fillet, other fish meal	13.90	18.7.	-
305	Fish dried	35.22	17.11	-51.42
306	Shrimps & prawns frozen	2643.87	2105.68	-20.36
307	Molluscs	20.39	1.11	-94.56
506	Bone and horn- cores	24.09	31.52	30.84
709	Vegetable fresh, chilled other	17.15	13.30	-22.45
902	Tea	29.41	14.86	-49.47
1006	Rice	26.22	35.28	34.55
2401	Un-manufactured tobacco	184.34	89.66	-51.36
2710	Petro oil/oil bitum minrl, nec	314.08	398.12	26.76
3003-004	Pharmaceutical product	334.48	442.05	32.16
3901-926	Plastic & articles thereof	492.68	616.61	25.15
4102	Raw hides & skin of sheep's or lambs	-	-	-
4103	Raw hides and skin other	1.00	8.46	746.00
4104	Leather Bovine/Equin W/Out hair	1634.85	1211.50	-25.90
4105	Tanned or crust skins of sheep or lambs	-	.55	-
4106	Tanned or crust hides and skins or other animals	263.93	244.57	-7.34
4107	Leather hole hides and skins or crusting	431.00	360.06	-16.46
4113	Leather further prepared after tanning or crusting including parchment-dressed leather of other animals	196.89	114.82	-41.68
4202	Trunks, suit-case, vanity-cases, brief cases, and other	674.10	789.82	17.17
4602	Basket work, wicker work, and other articles	58.78	50.06	-14.83
5303	Jute and other textile bast fibres, raw or retted	680.14	646.60	-4.93
5307	Jute yarn	3116.56	3629.64	16.46
5310	Woven fabrics and jutes or of other textile bast fibres	412.93	430.52	4.26
5607	Jute twine, cordage, roofs and cables	97.46	99.28	1.87
6101-117	Readymade garments men's women's and girls knitted and crocheted	86720.63	74703.08	-13.86
6201-217	Readymade garments men's women's and girls not knitted and crocheted	99007.65	89141.77	-9.96
6305	Sacks and bags, of a kind used for the packing of goods	1203.55	1007.68	-16.27
6401-6406	Foot ware with outer soles and uppers of rubber or of plastics and other	4649.21	3144.92	-32.36
6505	Heads and other headgear, knitted or crocheted	327.08	335.78	2.66
	<b>Total</b>	<b>203943.30</b>	<b>179913.61</b>	<b>-11.78</b>

**Table 18. Monthly merchandise import (2 digit HS code)**

(In million taka)

H S Code	Commodities	2014-15		% change from previous month
		Jan'15	Feb'15	
1	Live animals	-	-	-
2	Meat and edible meat offal	19.70	-	-
3	Fishes, crustacean and other aquatic	335.88	308.07	-8.28
4	Dairy produces edible product of animal origin.	2684.41	1859.23	-30.74
5	Products of animal origin	278.31	424.85	52.65
6	Live tree and other plants etc.	.86	1.64	90.70
7	Edible vegetables, roots as tubers	2675.80	5468.37	104.36
8	Edible fruits and nuts citrus fruits	2062.75	1923.07	-6.77
9	Coffee, tea, mate and spices	1232.09	1339.38	8.71
10	Cereals	7081.50	11327.68	59.96
11	Product of milling industry: malt etc.	205.41	223.14	8.63
12	Oil seeds and oleaginous fruits	1360.64	6894.46	406.71
13	Lac, gums, resins , vegetable saps & extra	53.98	34.36	-36.35
14	Vegetable plaiting materials	25.43	25.62	0.75
15	Animal or vegetable fats and oils	28107.59	20413.80	-27.37
16	Preparations of meat or fish etc.	1.99	10.25	415.08
17	Sugar and sugar confectionery	154.13	6448.46	4083.78
18	Cocoa and cocoa preparation	45.69	26.18	-42.70
19	Preparations of cereals, flour, starch etc.	355.16	418.41	17.81
20	Preparations of vegetable, fruits, nuts, etc.	44.40	41.38	-6.80
21	Misc. edible preparations	382.28	393.79	3.01
22	Beverages, spirits and vinegar	71.56	70.05	-2.11
23	Residues & waste from the food industries	1977.44	1990.80	0.68
24	Tobacco mfg tobacco substitutes	98.21	55.23	-43.76
25	Salt, sulphur, etc. and plastering metals stone cement	6751.27	6082.87	-9.90
26	Ores, slag and ash	418.34	528.21	26.26
27	Mineral, fuels/oils etc.	26997.22	27511.94	1.91
28	Inorganic. Chem.: compounds of specious metals etc.	2129.40	2570.96	20.74
29	Organic Chemicals	3962.27	4319.85	9.02
30	Pharmaceutical products	328.94	889.06	170.28
31	Fertilizers	10173.53	5172.06	-49.16
32	Tanning/dyeing ext; dye pigments etc.	3424.02	3744.70	9.37
33	Essential Oils, perfumery/toilet pre.	416.28	422.78	1.56
34	Soap, organic surface-active agents etc.	1077.50	1087.65	0.94

**Table 18. Monthly merchandise import (2 digit HS code)**

(In million taka)

H S Code	Commodities	2014-15		% change from previous month
		Jan'15	Feb'15	
35	Albuminoidal substitute starches, glues e	430.95	457.14	6.08
36	Explosives pyrotechnic products etc.	.01	85.16	851500.00
37	Photographic/cinematographic goods	251.31	120.58	-52.02
38	Miscellaneous chem. products	3208.70	3224.84	0.50
39	Plastics and articles thereof	12045.18	9608.04	-20.23
40	Rubber and articles thereof	1683.38	1422.08	-15.52
41	Raw hides & skins, leather	875.69	1271.64	45.22
42	Articles of Leather/Animal gut	164.75	186.23	13.04
43	Fur skins & artificial fur. Mfg.	.23	4.91	2034.78
44	Wood & art. of wood; wood charcoal	853.74	824.52	-3.42
45	Cork and articles of cork	1.60	.77	-51.88
46	Manufactures of straw etc.	1.83	5.19	183.61
47	Pulp/ wood/fibrous cellulosic materials etc.	944.63	1116.78	18.22
48	Paper & paper board; art. Paper pulps etc.	3119.88	2973.44	-4.69
49	Printed Book, News paper & picture	5484.92	74.44	-98.64
50	Silk	12.84	4.35	-66.12
51	Wool, fine/coarse animal hair etc.	331.03	357.63	8.04
52	Cotton	44061.12	43732.55	-0.75
53	Other vegetabe, textile fibres, paper/yarn etc.	468.83	295.94	-36.88
54	Man-made filaments	6448.36	7049.43	9.32
55	Man-made staple fibres	9551.84	10237.90	7.18
56	Wadding felts non-wovens, special yarn etc.	304.77	396.45	30.08
57	Carpet other text. floor coverings	39.86	23.13	-41.97
58	Special woven fabrics, tufted textile fabrics etc.	716.31	1049.39	46.50
59	Impregnated, coated, textile fabrics etc.	666.61	874.35	31.16
60	Knitted or crocheted fabrics	2815.57	3592.29	27.59
61	Article of apparl. clothing accessor. knit /crocht.	128.71	118.10	-8.24
62	Articl of apparl.clothing accessor.n-knit/ crocht.	5087.67	5371.01	5.57
63	Other made up textile articles etc.	283.02	134.81	-52.37
64	Footwear, gaiter & like etc.	824.59	1002.68	21.60
65	Headgear and parts thereof	25.98	10.77	-58.55
66	Umbrellas, sun umbrellas, walk sticks etc.	29.27	34.86	19.10

**Table 18. Monthly merchandise import (2 digit HS code)**

(In million taka)

H S Code	Commodities	2014-15		% change from previous month
		Jan'15	Feb'15	
67	Prepared feather & down articles	32.97	25.77	-21.84
68	Art of stone, plastic, cement etc.	222.71	198.46	-10.89
69	Ceramic products	345.56	393.39	13.84
70	Glass and glassware	432.00	409.35	-5.24
71	Natural/culture pearls & precious stones	35.85	20.87	-41.79
72	Iron or steel	18884.74	12285.66	-34.94
73	Articles of iron or steel	2711.01	2448.13	-9.70
74	Copper and articles thereof	1056.05	1795.02	69.97
75	Nickel and articles thereof	15.43	11.48	-25.60
76	Aluminum and article thereof	1435.24	1797.85	25.26
78	Lead and articles thereof	334.76	317.81	-5.06
79	Zinc and articles thereof	853.57	1042.58	22.14
80	Tin and articles thereof	.88	1.85	110.23
81	Other base metals, cermet etc.	25.89	28.83	11.36
82	Tools, implements, cutlery etc.	223.08	217.61	-2.45
83	Miscellaneous art of base metal.	294.33	458.96	55.93
84	Nuclear reactors, boilers etc.	30113.61	26527.91	-11.91
85	Electrical mach. & equipment, parts etc.	13331.74	12857.58	-3.56
86	Rail/tramway locomotives etc.	17.29	11.06	-36.03
87	Vehicles, other than rail/tram way's & parts etc.	5899.55	6200.03	5.09
88	Aircraft, space craft and parts.	555.08	241.02	-56.58
89	Ships, boats & floating structures	5302.90	7286.92	37.41
90	Optical, Photograph, Cinematograph, Medical Inst.	2344.85	1566.14	-33.21
91	Clocks & watches & parts.	27.96	34.71	24.14
92	Musical /instruments and parts etc.	3.12	1.06	-66.03
93	Arms, & ammunition and parts & accessories	1258.10	19.64	-98.44
94	Furniture, bedding, mattresses etc.	780.30	480.25	-38.45
95	Toys, games & sports requisites & parts etc.	137.70	144.57	4.99
96	Miscellaneous mfg. articles	1472.47	1565.88	6.34
97	Works/ art, collectors & antiques	1.55	1.34	-13.55
98	Goods commodities nec	7.55	3.14	-58.41
<b>Total</b>		<b>293955.03</b>	<b>286084.60</b>	<b>-2.68</b>

**Table 19. Monthly import of major commodities (4 digits)**

(In million taka)

H S Code	Commodities	2014-15		% change from previous month
		Jan'15		
401	Milk & cream	1.44	1.41	-2.08
703	Onion & Garlic	1523.64	1555.10	2.06
713	Dried leguminous vegetable	1130.16	3897.28	244.84
804	Dates	66.17	52.26	-21.02
806	Grapes	174.91	360.63	106.18
808	Apples	488.12	442.48	-9.35
904	Pepper	369.22	479.93	29.98
1001	wheat	2916.53	5038.82	72.77
1006	Rice	3887.33	5072.90	30.50
1108	Starches	173.80	218.73	25.85
1201-1212	Oil seeds	1360.40	6894.44	406.80
1507	Soya bean oil	9813.63	8310.70	-15.31
1511	Palm Oil	18128.11	11874.29	-34.50
1701	Sugar	40.09	6366.28	15779.97
2401	Un-manufactured tobacco	54.21	15.70	-71.04
2523	Cement	5165.17	4922.29	-4.70
2710	Petroleum product	22340.43	20863.98	-6.61
2801-2851	In organic Chemicals	2251.54	2570.84	14.18
2901-2942	Organic Chemicals	3962.44	4319.75	9.02
3101-3105	Fertilizers	10173.53	5172.06	-49.16
3201-3215	Tanning & dyeing	3424.02	3744.69	9.37
3801-3825	Chemical product	3210.59	3224.82	0.44
3901-3926	Plastic & articles thereof	12045.15	9608.01	-20.23
4801-4823	Paper & paper board	3119.86	3016.35	-3.32
5201-5203	Raw cotton	15546.20	13287.66	-14.53
5205-5207	Cotton yarn	5900.51	7225.06	22.45
5208-5212	Cotton fabric	22571.31	23150.66	2.57
5402-5406	Synthetic yarn	2318.67	2642.19	13.95
5407-5408	Synthetic fabric	3241.52	3498.73	7.93
5504-5507	Staple fibre	816.33	1443.71	76.85
5509-5511	Yarn of staple fibre	2322.07	3023.48	30.21
5512-5516	Fabric of staple fibre	4737.43	4926.96	4.00
7201-7229	Iron & steel	18884.74	12285.65	-34.94
7301-7326	Article of iron & steel	2711.02	2448.09	-9.70
7601-7616	Aluminum & article thereof	1435.24	1797.80	25.26
8402-8485	Machinery & parts	30091.43	26392.35	-12.29
8501-8548	Electrical goods	13331.69	12854.22	-3.58
8607-8609	Rail, tramway, locomotive	17.27	10.80	-37.46
8701-8716	Vehicle	5899.57	6200.01	5.09
8902,8903,8908	Ships, boat, floating structure	4578.52	7170.54	56.61
9001-9033	Optical, Photo, Cinema etc.	2344.83	1566.50	-33.19
	<b>Total</b>	<b>242568.80</b>	<b>237948.20</b>	<b>-1.90</b>

**Table 20. Re-exports Value, February-2015 by 2 digit HS Code.**

<b>HS CODE</b>	<b>HS DESCRIPTIONS</b>	<b>Million (In Taka)</b>
	Total Re- export	408.12
03	Fish & crustacean otr aqutic	20.14
29	Organic chemicals	.12
39	Plastics and articles thereof	.26
40	Rubber & articles thereof	1.13
41	Raw hides & skins of bovine	3.03
44	Wood & articles of wood/charcoal	8.25
48	Paper & p/ board art of p/pulp	.02
49	Printed book,newspaper,picture	.02
52	Cotton	14.74
57	Carpt otr text floor covering	.10
58	Special woven fabrics;tufted	1.46
62	Artcl aparl clth acesor n - knit	1.58
63	Otr made up text artcl set rag	1.86
67	Prepared feathr & down artcles	2.02
73	Articles of iron & steel	11.37
74	Copper & articles thereof	.45
82	Tool cut spon base metl & part	33.68
84	Nuclear rect boil mach & parts	187.91
85	Electrcl machinery ewuipmnt part	110.51
90	Optical , photo, cinma surgi apt	5.42
94	Furniture,bedding,mattresses	.80
96	Miscellaneous MFG articles	3.25



**Table 21. Temporary export Value, February-2015 by 2 digit HS Code**

<b>HS CODE</b>	<b>HS DESCRIPTIONS</b>	<b>Million (In Taka)</b>
	<b>Total : Temporary- Exports</b>	<b>192.13</b>
23	Residues/waste animal fodder	5.48
39	Plastics & articles thereof	.48
40	Rubber & articles thereof	.33
71	Natural/culture pearl, precious stone	.17
73	Articles of iron and steel	2.07
84	Nuclear reactor boiler machinery & parts	5.17
85	Electric motor machinery equipment part	9.17
88	Aircraft, spacecraft part	168.71
90	Optical, photo, cinema surgical apparatus	.55

**Table 22. Temporary Import Value, February-2015 by 2 digit HS Code**

<b>HS CODE</b>	<b>HS DESCRIPTIONS</b>	<b>Million (In Taka)</b>
	<b>Total : Temporary- Imports</b>	<b>92.00</b>
39	Plastics & articles thereof	.01
40	Rubber & articles thereof	.01
73	Articles of iron & steel	.04
82	Tool cutters on base metal & part	.01
84	Nuclear reactor boiler machinery & parts	91.44
85	Electric machinery equipment part	.49