

MONTHLY RELEASE
Foreign Trade Statistics
Bangladesh Bureau of Statistics

March 2015

Compilation and dissemination of Foreign Trade Statistics (FTS) is one of the core activities of Bangladesh Bureau of Statistics (BBS). Considering the importance of FTS, BBS has been compiling and publishing it on an annual basis since 1973-74. Since February 2007, BBS has been publishing **Monthly Release** on FTS to satisfy the users' need. It is an outcome of the BBS efforts towards the improvement of FTS.

This monthly release is based on the data available from National Board of Revenue (NBR) and Bangladesh Bank (BB). NBR provides export and import data on goods while BB provides such data on services. We are thankful to NBR and BB which have continued to help us in providing data in bringing out this publication.

Data presented in this publication are provisional and subject to revision. All these provisional data will be subsequently reviewed and revised. The revised data will be presented in the upcoming issues.

I firmly believe this publication will play a significant role as an effective market research tool to planners, policy makers, researchers, the business community and others. Comments and suggestions from users regarding any inclusion, omission or presentation of data for improvement of the publication are most welcome.

I would like to express my heartfelt thanks to Mr. Abul Kalam Azad, Director Mr. Md. Shahabuddin Sarker, Deputy Director, Shahanaz Begum, Assistant Statistical Officer, BBS and all other officers and staffs of Foreign Trade Section for their relentless effort to make the publication possible.

Mohammad Abdul wazed
(Additional Secretary)
Director General

Total Trade (Goods & Services)

In March,2015, total export and import of goods and services were recorded at Tk.219.94 billion and Tk.356.64 billion respectively resulting in a trade deficit of goods and services decreased by Tk.136.70 billion. The growth of export and import in March,2015 is increased by 3.59 and increased by 14.69 percent respectively comparing to February,2015 and it has increased by 305.72 and increased by 99.80 percent respectively comparing to March,2014.

Goods

In March,2015, the trade deficit for goods appeared to Tk. 105.62 billion as against Tk.91.51 billion in February, 2014. The export of goods in March,2015 have increased by 3.00 over against that in February, 2015 and the import of goods in March,2015 have increased by 14.69% as compared to that in February, 2015.The exports of goods in March,2015 is Tk.200.41 billion as against Tk. 28.72 billion in March,2014.The import of goods in March,2015, is Tk.306.03 billion as against Tk. 128.45 billion in March,2014.

Services

In March,2015, the trade deficit for services stands to Tk. 31.08 billion as against Tk. 7.12 billion in February, 2015. The export of services in March,2015 has increased by 10.03 percent while the import of services during the period has increased by 103.50 percent as compared with that in February, 2015. The export of services in March ,2015 is Tk. 19.53 billion which was Tk. 25.49 billion in March,2014. On the other hand the import of services in March,2015 is Tk.50.61 billion as against Tk. 50.05 billion in March,2014.

Three months Moving Average of export and import

For the three months ending in March,2015the moving average of exports of goods and services was Tk. 222.98 billion, while the moving average of imports of goods and services was Tk.341.34 billion resulting in an average trade deficit of Tk. 118.36 billion. For the three months ending in February, 2015 the average trade deficit was Tk.120.03 billion, reflecting average export of Tk. 230.17 billion and average imports of Tk. 350.20 billion.

Table 1: Export, import and trade deficits

(In billion taka)

	Export			Import			Trade balance		
	Total	Goods	Services	Total	Goods	Services	Total	Goods	Services
2012-13	2474.06	2268	205.66	3158.51	3144.27	514.24	-1063.73	-876.27	-308.68
2013-14	1997.18	1749.09	248.09	2998.30	2379.40	574.53	-1001.12	-674.66	-326.44
2014-15									
Apr-14	43.69	23.28	20.41	113.98	67.92	46.06	-70.29	-44.64	-25.65
May-14	231.90	209.85	22.05	324.61	263.14	61.47	-92.71	-53.29	-39.42
June-14	232.59	216.60	15.99	339.29	288.34	50.93	-106.70	-71.74	-34.94
July-14	253.35	233.87	19.48	295.12	242.30	52.82	-41.77	-8.49	-33.34
Aug-14	187.10	166.00	21.10	344.14	292.00	52.14	-157.04	-126.00	-31.04
Sep;14	218.78	198.19	20.59	405.82	348.96	56.06	-187.04	-150.77	36.27
Oct-14	164.37	149.77	14.60	334.51	290.00	44.51	-170.14	-140.23	-29.91
Nov-14	206.00	185.98	20.02	233.69	282.23	51.46	-27.69	-96.25	-31.44
Dec-14	241.49	219.43	22.06	383.20	325.87	57.33	-141.71	-106.44	-35.27
Jan-15	236.70	219.73	16.97	356.44	293.96	62.48	-119.74	-74.23	-45.51
Feb-15	212.31	194.57	17.75	310.95	286.08	24.87	-98.63	-91.51	-7.12
Mar-15	219.94	200.41	19.53	356.64	306.03	50.61	-136.70	-105.62	-31.08

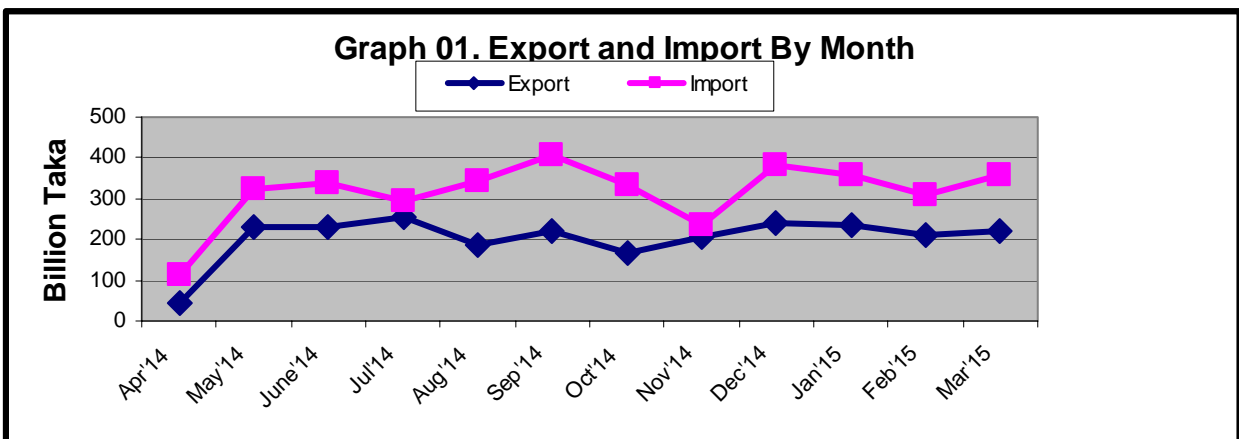


Table 2: Export, import and trade deficits

(In million US \$)

Period	Export			Import			Trade balance		
	Total	Goods	Service	Total	Goods	Service	Total	Goods	Service
2012-13	28853	28651	202	40257	39752	505	-11404	-11101	-303
2013-14	22623	22376	247	31577	31005	572	-8954	-8629	-325
2014-15									
Apr-14	318	298	20	915	869	46	-597	-571	-26
May-14	2706	2684	22	3426	3365	61	-720	-681	-39
Jun-14	2806	2790	16	3765	3714	51	-959	-924	-35
Jul-14	3029	3010	19	3172	3119	53	-143	-109	-34
Aug-14	2163	2142	21	3812	3760	52	-1649	-1618	-31
Sep-14	2572	2551	21	4549	4492	57	-1977	-1941	-36
Oct-14	1943	1928	15	3778	3733	45	-1835	-1805	-30
Nov-14	2398	2378	20	3660	3609	51	-1262	-1231	-31
Dec-14	2847	2825	22	4252	4195	57	-1405	-1370	-35
Jan-15	2827	2810	17	3821	3759	62	-994	-949	-45
Feb-15	2506	2488	18	3683	3658	25	-1177	-1170	-7
Mar-15	2586	2566	20	3969	3918	51	-1332	-1352	-31

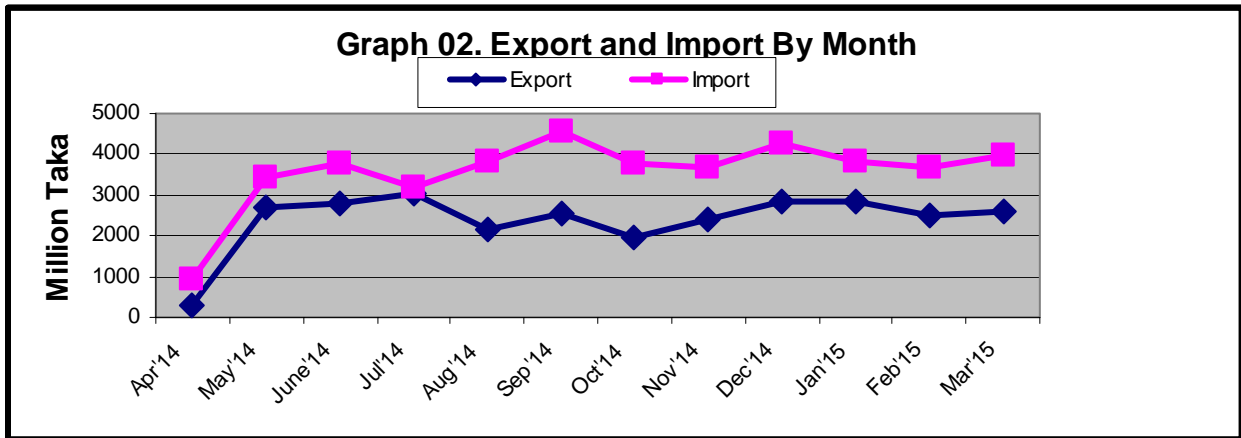


Table 3. Percent change from the previous month (goods)

(In million taka)

Items	2014-15		
	Feb'15	Mar'15	Percent change from the previous month
1. Export (Commodities)	194567	200410	3.00
1. Ready made Garments	163844	161380	-1.50
2. Shrimps and prawn	2106	2247	6.70
3. Vegetable textiles fiber/ yarn	4728	5742	21.45
4. Made-up textiles articles	5868	6572	12.00
5. Raw hides, skins & leathers	1942	2749	41.56
6. Raw jute	647	708	9.43
7. Footwear Special woven fabrics	3145	3575	13.67
8. Fertilizer	4	-	-
9. Hats and other head gear	335	386	15.22
10. Special woven fabrics	253	330	30.43
11. Others	11695	16721	42.98
2. Import (Commodities)	286085	306025	6.97
1. Machinery & parts	26528	31018	16.93
2. Petroleum product and oil	27512	34734	26.25
3. Electric Machinery	12858	12829	-0.23
4. Soya bean and Palm oil	20185	21261	5.33
5. Raw cotton	13142	14899	13.37
6. Textile fabrics	899	658	-26.81
7. Iron and steel	12286	12398	0.91
8. Plastics and articles	9608	12993	35.23
9. Wheat	5039	7856	55.90
10. Fertilizer	5172	6061	17.19
11. Others	152856	151318	-1.01
3. Trade balance (1-2)	-91518	-105615	15.40

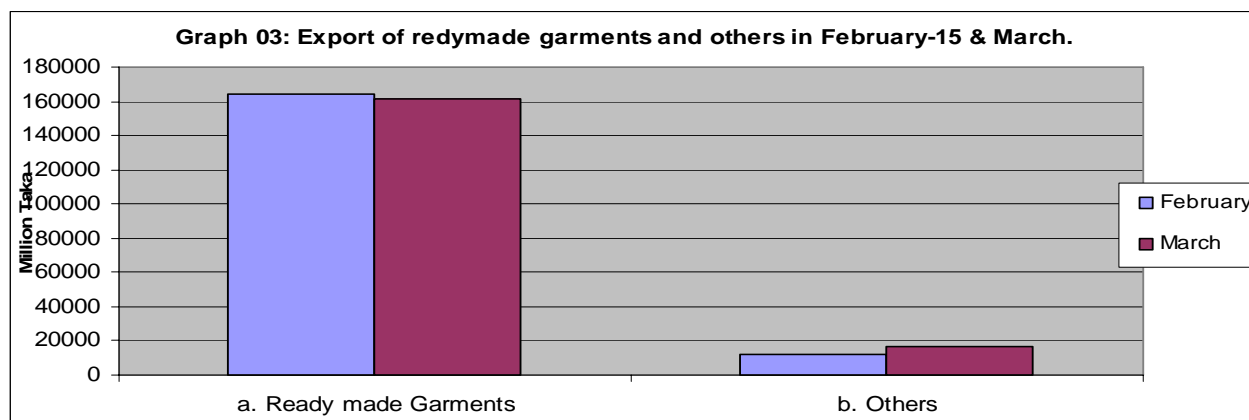


Table 4. Import of Essential Commodities Quantity in M. Ton

(In million taka)

Items	2014-15			
	Feb'15	Mar'15	Percent change from the previous month	Cumulative (March'15)
Import (Commodities)				
1. Raw sugar	218837	313796	43.39	1788449
2. Palm oil	219838	329424	49.85	2426963
3. Soya bean oil	126217	63377	-49.79	881544
4. Milk & Cream	7326	11648	59.00	78996
5. Ginger	1961	1945	-0.82	10740
6. Chillies	-	-	-	-
7. Wheat	223986	349761	56.15	2578123
8. Rice	182530	182928	0.22	1356567
9. Lentil & other	37520	28362	-24.41	183745
10. Onion	37699	37653	-0.12	408848
11. Garlic	8005	5214	-34.87	68502
12. Tea	1135	1655	45.81	5580
13. Oil seed	167083	64324	-61.50	603562

Table 5: Twelve months export of readymade garments during 2012-13 to 2014-15

(In million taka)

Month	Ready made Garments (Knitted)			Ready made Garments (Not Knitted)		
	2012-13	2013-14	2014-15	2012-13	2013-14	2014-15
July	81856	97489	101485	81278	98123	93914
August	64571	97489	69664	62748	98123	63171
September	109983	82254	82360	94910	76541	72051
October	70847	66362	60953	61730	63406	56604
November	53225	67407	70801	58705	68236	77444
December	73265	79771	82837	84186	93450	98742
January	75300	69682	86721	91743	80387	99008
February	64184	9504	74703	77630	23258	89141
March	67207	2748	72390	78189	16967	88990
April	61944	54		65012	2758	
May	78773	86610		77746	84796	
June	84982	87795		87379	91874	

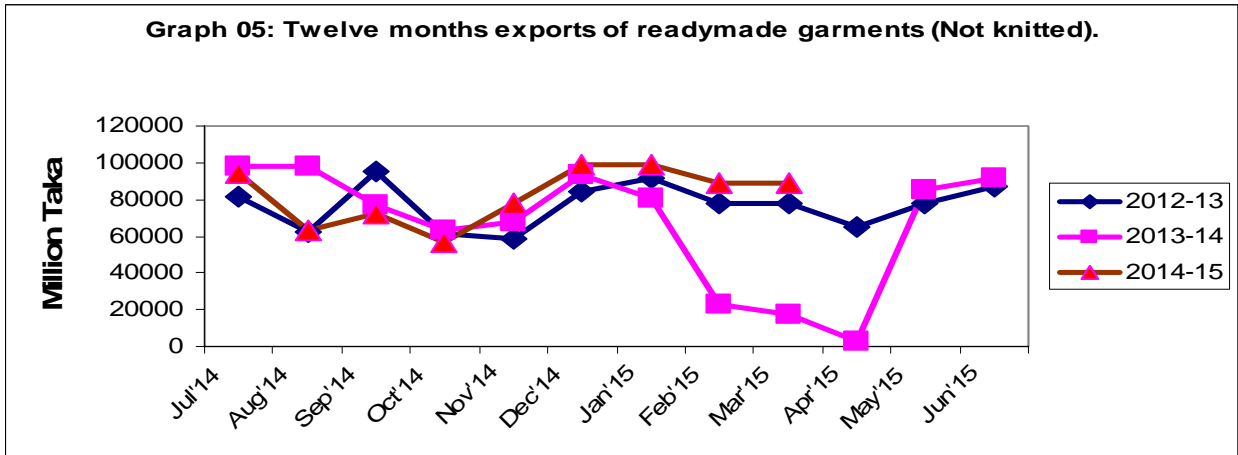
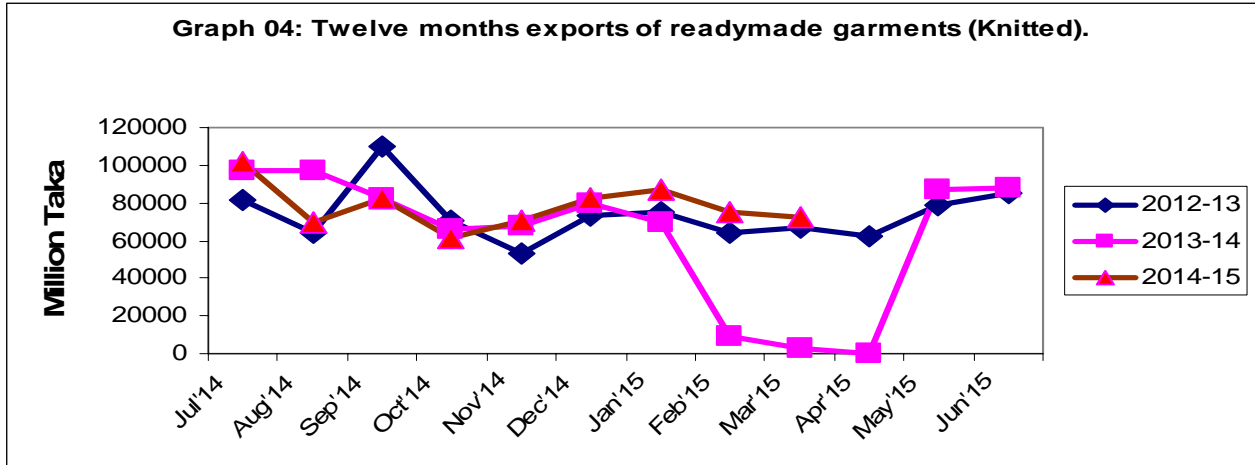


Table 6: Twelve months export of raw hides, skins & leather, 2012-13 to 2014-15

(In million taka)

	Raw hides, skins & leather		
	2012-2013	2013-14	2014-15
July	2347	3065	2899
August	1870	3065	2230
September	3568	3699	3342
October	2560	567	2637
November	1854	691	2335
December	2970	767	2930
January	2569	47	2530
February	2515	12	1942
March	3304	37	2749
April	3494	498	
May	3631	3454	
June	2869	2864	

Graph 06: Twelve months exports of Raw hides, skin & leather.

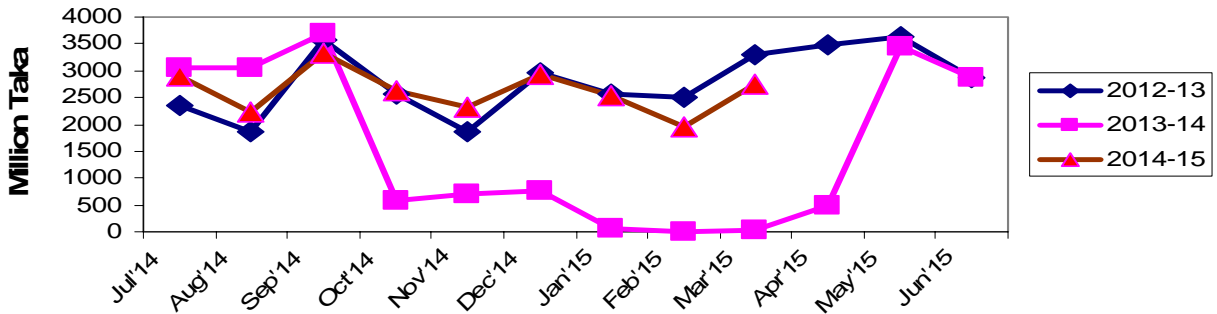


Table 7: Twelve months export of shrimps and prawn, 2012-13 to 2014-15.

(In million taka)

Month	Shrimps and prawn		
	2012-13	2013-14	2014-15
July	3466	4397	4774
August	2772	4397	4199
September	4415	5048	4997
October	3756	3121	3674
November	3609	2518	3738
December	3314	2148	3723
January	2502	1596	2644
February	2353	1144	2106
March	1634	1209	2247
April	2384	-	-
May	3811	2926	-
June	3802	4324	-

Graph 07: Twelve months exports of Shrimp & Prawn.

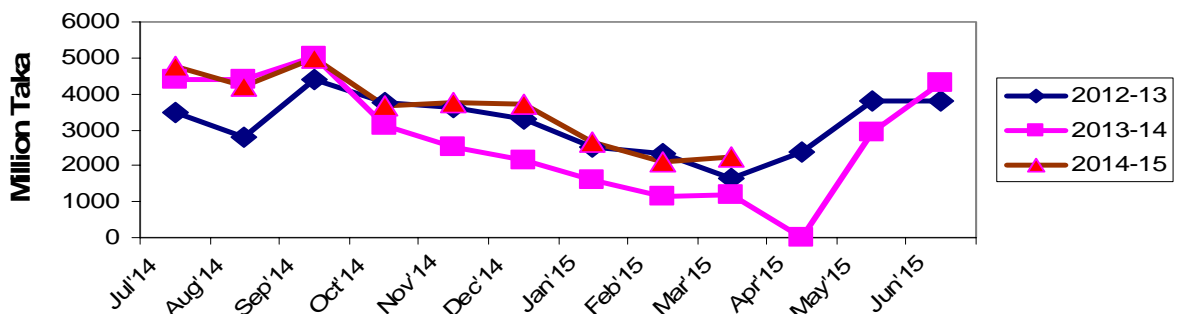
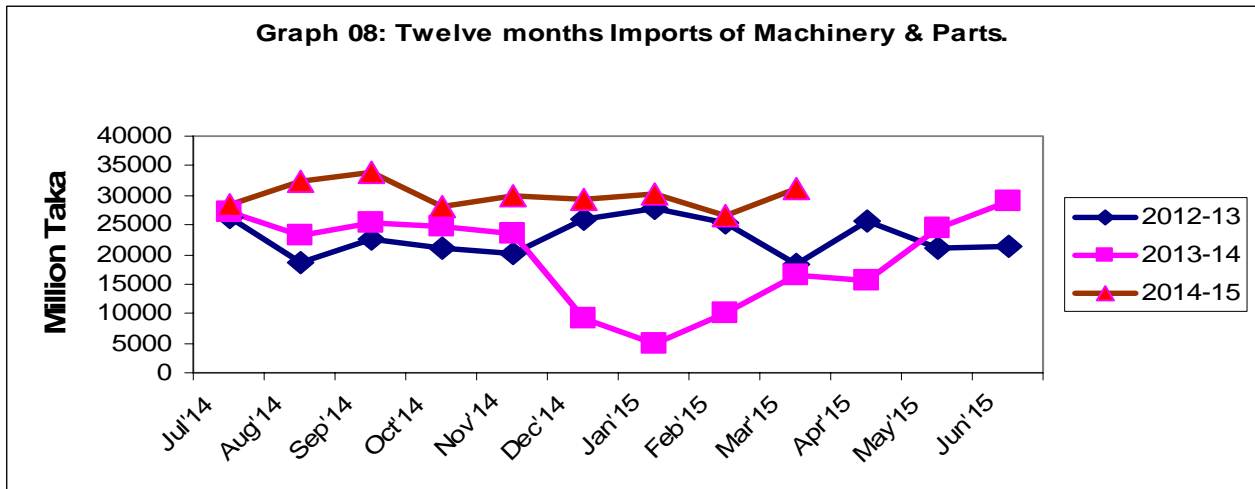


Table 8: Twelve months import of machinery & parts and electrical machinery during 2012-13 to 2014-15.

(In million taka)

Month	Machinery & Parts			Electrical Machinery		
	2012-13	2013-14	2014-15	2012-13	2013-14	2014-15
July	26239	27309	28289	13145	15767	16083
August	18678	23121	32463	12567	10324	19161
September	22617	25435	33942	13682	17442	20119
October	21001	24749	28228	15485	15713	15598
November	20238	23438	29911	14283	16380	15966
December	25979	9039	29267	12551	12552	17134
January	27802	5035	30114	16400	7308	13332
February	25296	10190	26528	12931	5330	12858
March	18472	16604	31018	10321	5233	12829
April	25543	15501		12333	6059	
May	21107	24465		13777	8147	
June	21471	28898		11112	11591	



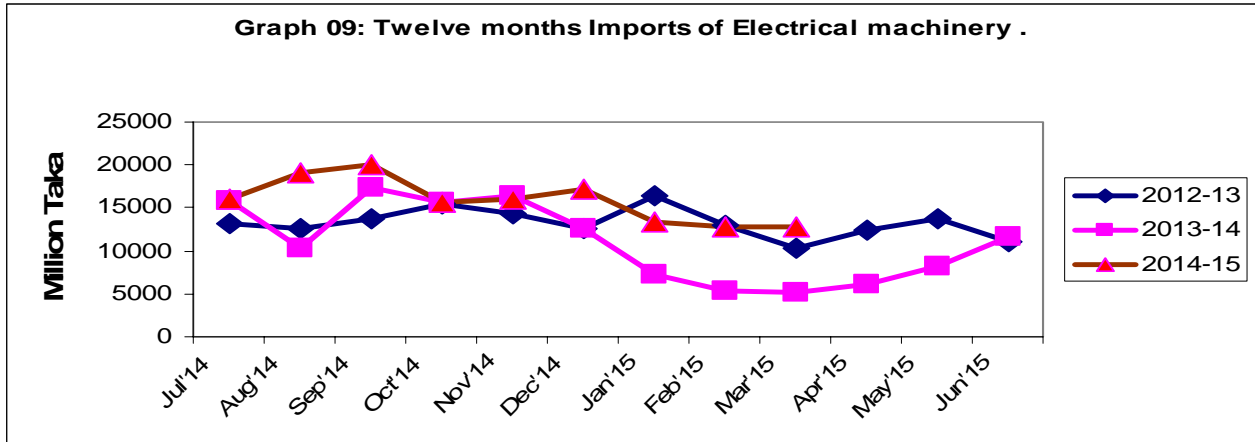
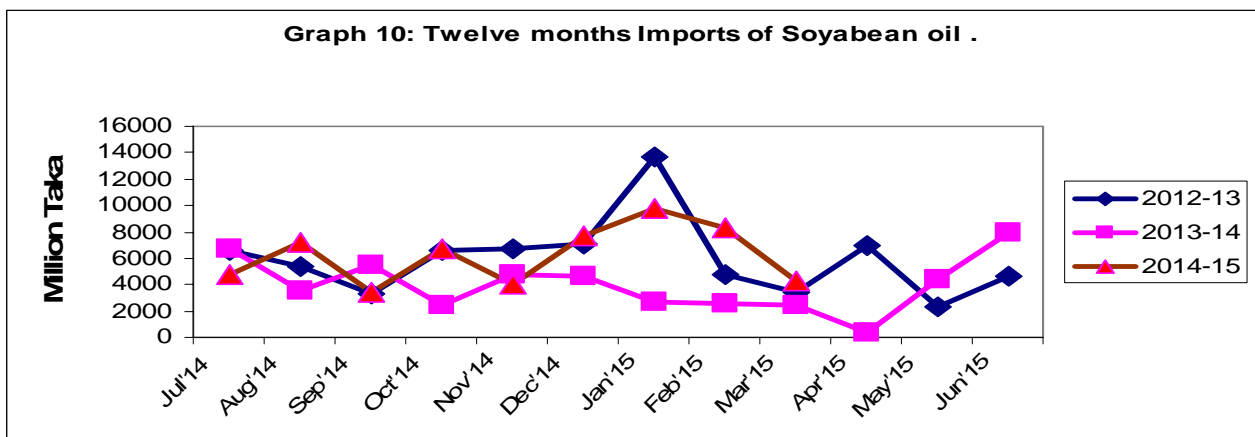


Table 9: Twelve months imports of Soya bean and Palm oil during 2012-13 to 2014-15

(In million taka)

Month	Soya bean			Palm Oil		
	2012-13	2013-14	2014-15	2012-13	2013-14	2014-15
July	6626	6695	4812	26621	18660	20866
August	5367	3484	7149	16609	11355	5369
September	3346	5481	3419	8373	8870	14583
October	6581	2428	6757	9621	21280	9185
November	6669	4793	3994	11868	9756	10064
December	7045	4626	7638	7951	8666	12918
January	13699	2667	9814	20540	4092	18128
February	4774	2590	8311	16991	8520	11874
March	3399	2444	4271	10186	6741	16990
April	6996	414		9690	77	
May	2287	4446		9935	13766	
June	4590	7908		26090	31529	



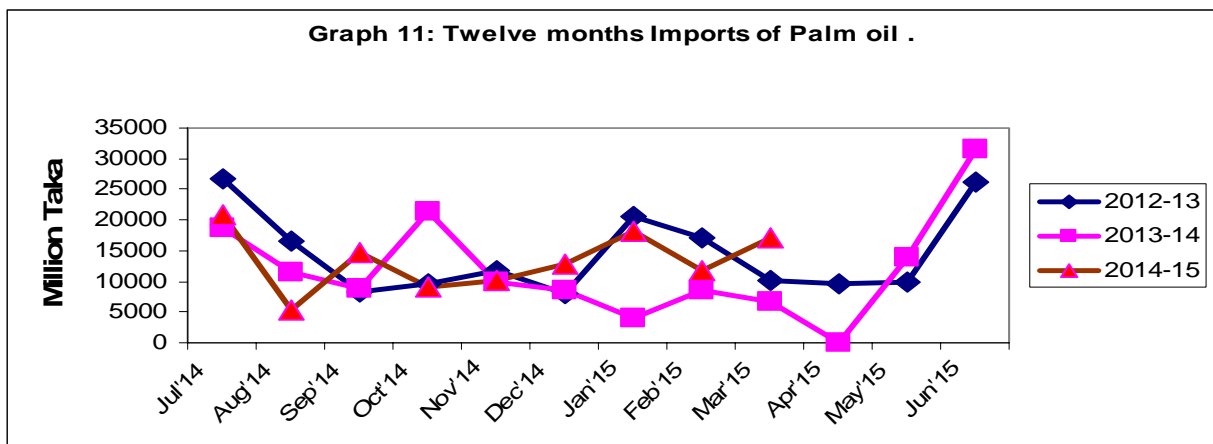


Table 10: Twelve months import of rice and wheat during 2012-13 to 2014-15

(In million taka)

Month	Rice			Wheat		
	2012-13	2013-14	2014-15	2012-13	2013-14	2014-15
July	155	569	1489	2287	3838	1611
August	62	661	2492	332	5903	6300
Sep	82	1101	2939	2351	14754	7266
Oct	407	455	3743	4444	27770	10175
Nov	223	516	4722	6933	2943	5291
Dec	26	386	4932	2640	313	4202
Jan	56	617	3887	3157	976	2917
Feb	59	336	5073	3459	1495	5039
Mar	24	184	5081	5039	1139	7865
April	63	142		7652	965	
May	38	414		5117	6484	
June	125	1954		2700	5912	

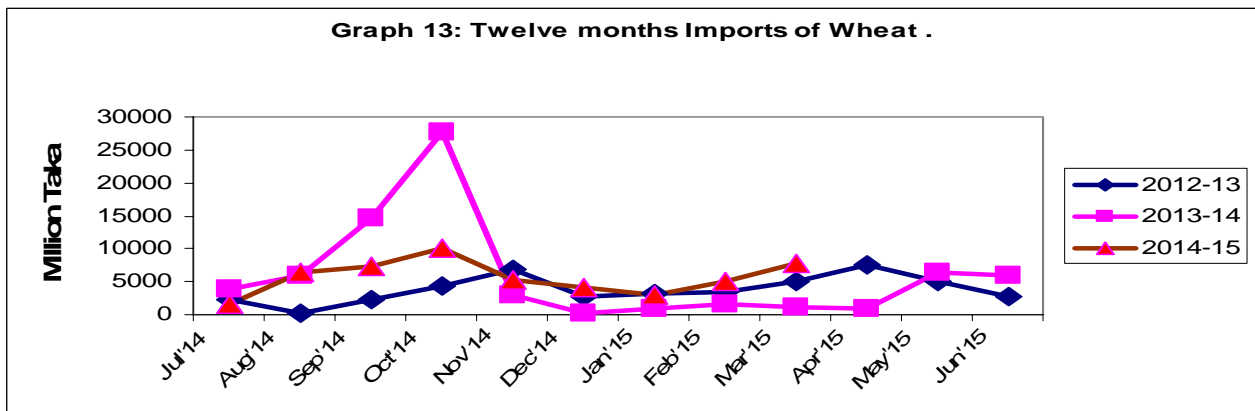
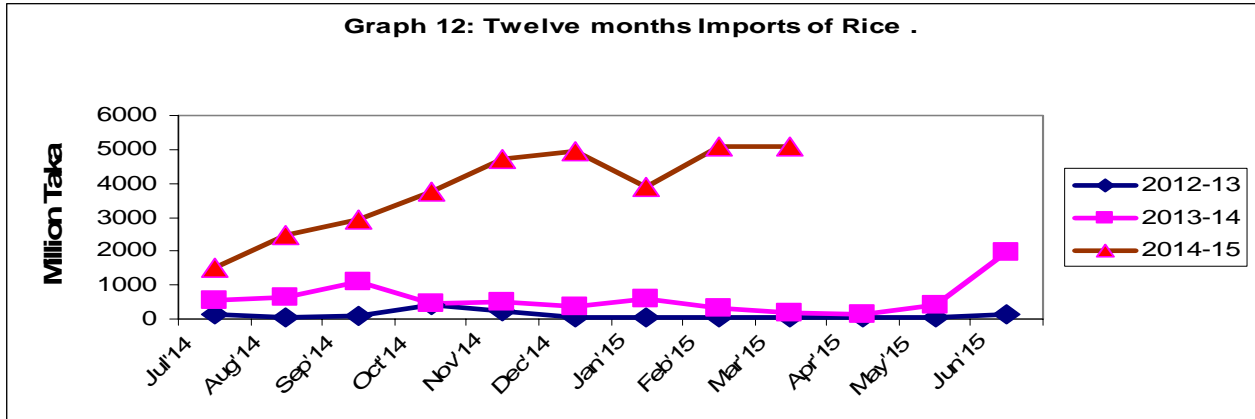


Table 11: Twelve months import of iron & steel and plastics & articles during 2012-13 to 2014-15

(In million taka)

Month	Iron & Steel			Plastics & articles		
	2012-13	2013-14	2014-15	2012-13	2013-14	2014-15
July	9059	12931	6683	2287	12670	11174
August	9455	9499	16007	7781	9296	13502
September	18745	9713	13734	9940	10343	13403
October	12691	9793	9949	9127	10268	10867
November	15499	6710	13530	8720	10039	11119
December	7038	3225	14663	8438	5171	11716
January	14420	1008	18885	10440	1608	12045
February	11548	1211	12286	7846	1246	9608
March	13913	1232	12398	10417	2837	12993
April	12425	879		12307	1373	
May	14867	19504		10168	9672	
June	16949	9882		9729	11572	

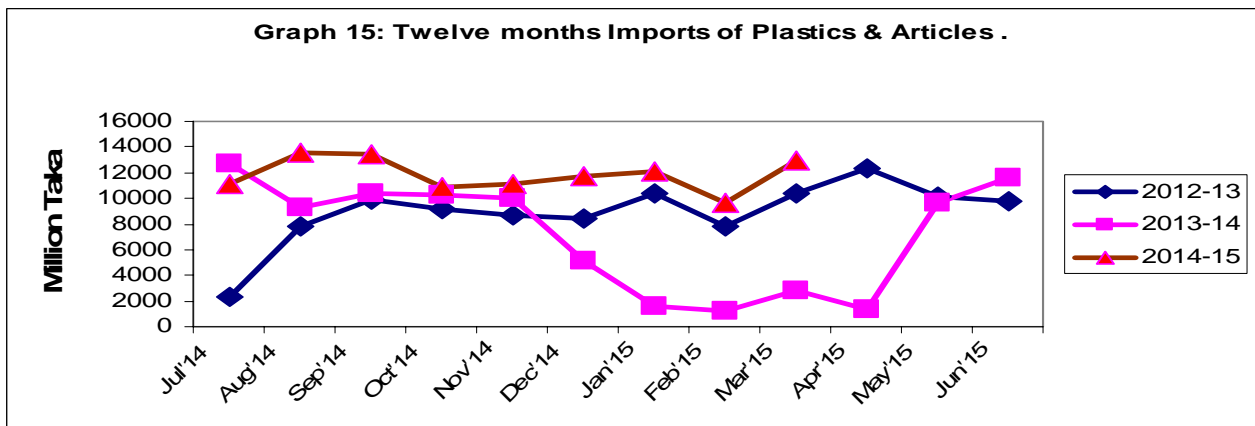
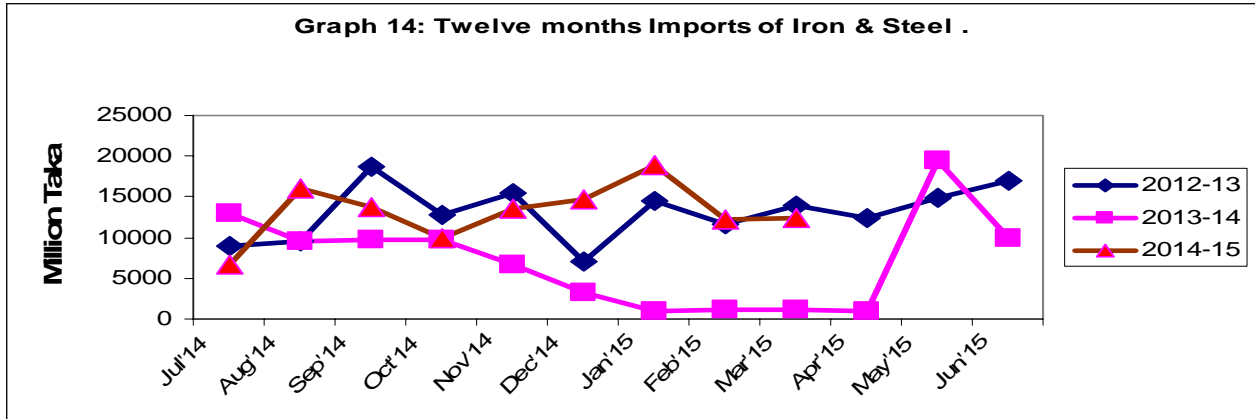


Table 12. Point to point percent change in external trade (goods)

(In million taka)

Items	January- March			March		
	2013-14	2014-15	Change in Percent	2013-14	2014-15	Change in Percent
1. Export(Commodities)	407677	401954	1.42	28721	200410	85.67
2. Import (Commodities)	641194	512813	-25.03	102350	306025	66.56
3.Trade balance(1-2)	-233517	-110859	-23.61	-73629	-105615	19.11

Table13. Top trading partners – total trade (goods) March -2015

(In million taka)

Country	Exports	Imports	Total	Rank	Percent of Total Trade
China	5156	56494	61650	1	12.18
India	4307	43108	47415	2	9.37
USA	39383	5159	44542	3	8.80
Germany	28534	4955	33489	4	6.61
Singapore	1051	29915	30966	5	6.12
UK	24589	2333	26922	6	5.32
Indonesia	266	18562	18828	7	3.72
Japan	6462	9318	15780	8	3.12
Hongkong	1326	13402	14728	9	2.90
Spain	10868	1982	12850	10	2.54

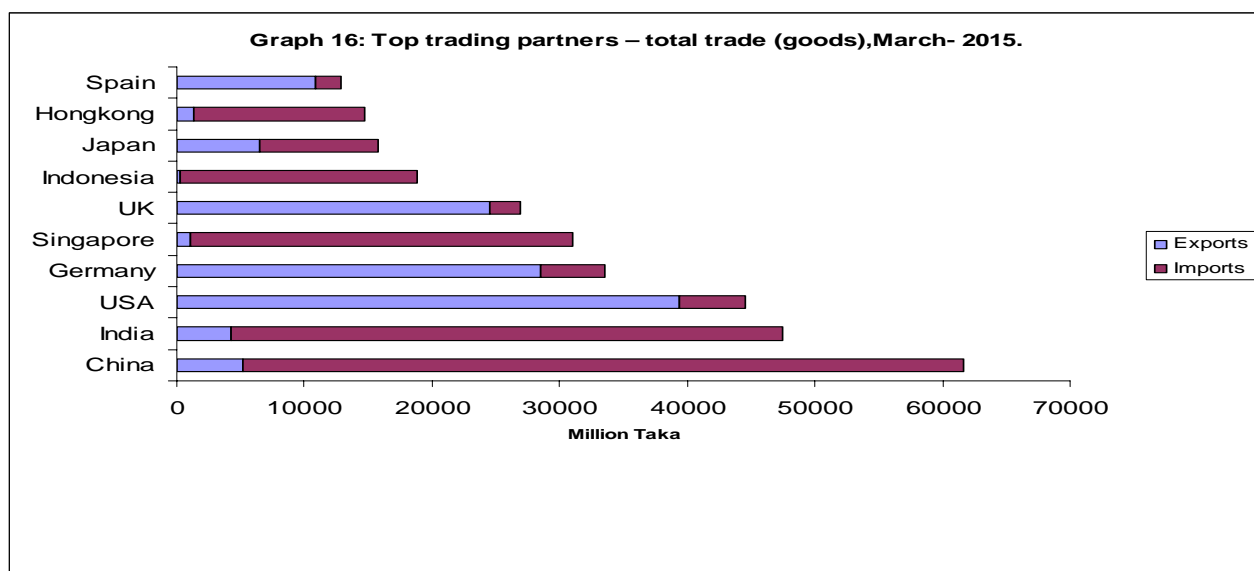


Table 14. Top trading partners – exports (goods), March -2015
(In million taka)

Country	Export	Rank	Percent of Total Export
USA	39382	1	19.67
Germany	28534	2	14.25
UK	24589	3	12.28
Spain	10867	4	5.43
France	9243	5	4.62
Italy	6875	6	3.43
Japan	6462	7	3.23
Canada	6368	8	3.18
Turkey	5268	9	2.63
China	5155	10	2.57

Table 15. Top trading partners – imports (goods), March -2015

(In million taka)

Country	Import	Rank	Percent of Total Import
China	56494	1	18.46
India	43107	2	14.09
Singapore	29915	3	9.78
Indonesia	18561	4	6.07
Hong kong	13402	5	4.38
Malaysia	11545	6	3.77
Brazil	11542	7	3.77
Korea Rep	9436	8	3.08
Japan	9318	9	3.04
Thailand	6930	10	2.26

Table 16. Monthly merchandise export (2 digit HS code)

HS Code	Commodities	2014-15		(In million taka)
		Feb'15	Mar'15	% change from previous month
1	Live animals	-	.01	.01
2	Meat and edible meat offal	-	-	-
3	Fishes, crustacean and other aquatic	2470.26	2585.97	4.68
4	Dairy produces edible product of animal origin.	6.73	4.96	-26.30
5	Products of animal origin	78.83	126.12	59.99
6	Live tree and other plants etc.	39.47	32.22	-18.37
7	Edible vegetables, roots as tubers	649.76	862.23	32.70
8	Edible fruits and nuts citrus fruits	94.46	390.13	313.01
9	Coffee, tea, mate and spices	147.82	183.83	24.36
10	Cereals	35.28	38.25	8.42
11	Product of milling industry : malt etc.	5.30	22.37	322.08
12	Oil seeds and oleaginous fruits	93.77	78.04	-16.78
13	Lac, gum resin vegetable sap/ extract	.98	3.42	248.98
14	Vegetable plaiting materials	212.79	134.61	-36.74
15	Animal or vegetable fats and oils	90.96	116.40	27.97
16	Preparations of meat or fish etc.	31.03	24.69	-20.43
17	Sugar and sugar confectionery	48.27	82.33	70.56
18	Cocoa and cocoa preparations	1.13	1.34	18.58
19	Preparations of cereals, flour, starch etc.	558.84	730.68	30.75
20	Preparations of vegetable fruits, nuts, etc.	446.11	558.44	25.18
21	Misc. edible preparations	.51	.88	72.55
22	Beverages, spirits and vinegar	172.45	262.50	52.22
23	Residues & waste from the food industry	7.97	3.66	-54.08
24	Tobacco mfg tobacco substitutes	119.15	164.22	-
25	Salt, sulph etc. & plastering metals stone cement	20.58	13.18	-35.96
26	Ores, slag and ash	6.25	55.85	793.60
27	Mineral, fuels/oils etc.	398.29	1219.82	206.26
28	Inorganic chem.comp of specious metals etc.	76.63	364.33	375.44
29	Organic chemicals	1.77	3.18	79.66
30	Pharmaceutical products	452.89	547.30	20.85
31	Fertilizers	4.24	-	-
32	Tanning/dyeing ext; dye pigments etc.	1.78	1.99	11.80
33	Essential oils, perfumery/toilet pre.	6.03	1.95	-67.66

Table 16. Monthly merchandise export (2 digit HS code)

(in million taka)

HS Code	Commodities	2014-15		% change from previous month
		Feb'15	Mar'15	
34	Soap, organic Surface-active agents etc.	13.86	15.96	15.15
35	Albuminoidal substitute starches, glues etc.	.14	6.24	4357.14
36	Explosive pyrotechnic products	-	-	-
37	Photographic/cinematographic goods	-	-	-
38	Miscellaneous chem. products	12.31	27.85	126.24
39	Plastics and articles thereof	616.61	604.96	-1.89
40	Rubber and articles thereof	110.40	126.06	14.18
41	Raw hides & skins, leather	1941.89	2748.93	41.56
42	Articles of Leather/Animal Gut	1311.21	1751.58	33.59
43	Fur skins & artificial fur. Mfg.	-	-	-
44	Wood & art. of wood; wood charcoal	20.96	31.41	49.86
45	Cork and articles of cork	-	-	-
46	Manufactures of straw etc.	51.02	68.22	33.71
47	Pulp/ wood/fibrous cellulose materials etc.	-	-	-
48	Paper & paper board; art. P. pulp etc.	181.35	250.41	38.08
49	Printed books, news papers, pictures etc.	2.21	2.02	-8.60
50	Silk	.45	.81	80.00
51	Wool, fine/coarse animal hair etc.	5.96	3.12	-47.82
52	Cotton	658.18	766.30	16.43
53	Other vegetable, Textile fibres, paper/yarn etc	4728.00	5742.37	21.45
54	Man-made filaments	208.91	317.42	51.94
55	Man-made staple fibres	220.45	163.28	-25.93
56	Wadding felts nonwovens, special yarn etc.	138.20	193.27	39.85
57	Carpet other text. floor coverings	122.70	142.45	16.10
58	Special woven fabrics, tufted tex.fabrics etc.	253.23	330.11	30.36
59	Impregnated, coated, textile fabrics etc.	82.77	87.92	6.22
60	Knitted or crocheted fabrics	269.33	313.32	16.33
61	Article of appl. clothing accesso. knit / crocht.	74703.07	72389.67	-3.10
62	Article of appl. clothing accesso. knit/	89141.76	88990.08	-0.17
63	Other made up textile articles etc.	5868.24	6572.04	11.99
64	Footwear, gaiter & like etc.	3144.92	3575.35	13.69
65	Headgear and parts thereof	417.30	439.68	5.36

Table 16. Monthly merchandise export (2 digit HS code)

(In million taka)

HS Code	Commodities	2014-15		% change from previous month
		Feb'15		
66	Umbrellas, sun umbrellas, walk sticks etc.	-	-	-
67	Prepared feathers & down/articles etc.	105.20	98.38	-6.48
68	Art of stone, plastic, cement etc.	.-	.59	-
69	Ceramic products	256.95	307.88	19.82
70	Glass and glassware	12.69	16.46	29.71
71	Natural/culture pearls precious stones etc.	10.45	36.39	248.23
72	Iron or steel	129.87	223.73	72.27
73	Articles of iron or steel	71.89	389.68	442.05
74	Copper and articles thereof	102.55	266.85	160.21
75	Nickel and articles thereof	-	-	-
76	Aluminum and article thereof	9.34	12.06	29.12
78	Lead and articles thereof	258.47	121.47	-53.00
79	Zinc and articles thereof	34.49	20.11	-41.69
80	Tin and articles thereof	-	-	-
81	Other base metals, cermets etc.	-	-	-
82	Tools, cutlery Spon base Metl Part	53.50	32.95	-38.41
83	Miscellaneous art of base metal.	.29	7.13	2358.62
84	Nuclear reactors, boilers etc.	415.85	1133.54	172.58
85	Electrical mach. & equipment, parts etc.	392.37	622.02	58.53
86	Rail/tramway locomotives etc.	4.40	4.93	12.05
87	Vehicles, other than rail/tram way's & parts etc.	1094.44	1418.14	29.58
88	Aircraft, space craft and parts.	168.93	.08	-99.95
89	Ships, boats & floating structures	.97	268.48	27578.35
90	Optical,photo,cinematgph.Medical inst.etc.	303.68	365.66	20.41
91	Clocks & watches & parts	10.04	6.23	-37.95
92	Musical /instruments and parts etc.	-	-	-
93	Arms, & ammunition and parts & accessories	-	123.60	-
94	Furniture, bedding, mattresses etc.	334.55	379.20	13.35
95	Toys, games & sports requisites & parts	210.44	139.67	-33.63
96	Miscellaneous mfg. articles	78.49	136.08	73.37
97	Works/ art, collectors & antiques	-	1.78	-
98	Goods Commodities NEC	1.43	1.64	14.69
	Grand Total	194567.04	200246.20	2.92

Table 17. Monthly export of major commodities (4 digits)

(In million taka)

H S Code	Commodities	2014-15		% change from previous month
		Feb'15	Mar'15	
303	Fish frozen	229.20	233.52	1.88
304	Fish fillet, other fish meal	18.7.	10.56	-
305	Fish dried	17.11	35.47	107.31
306	Shrimps & prawns frozen	2105.68	2247.03	6.71
307	Molluscs	1.11	3.71	234.23
506	Bone and horn- cores	31.52	10.81	-65.70
709	Vegetable fresh, chilled other	13.30	34.13	156.62
902	Tea	14.86	2.14	-85.60
1006	Rice	35.28	38.25	8.42
2401	Un-manufactured tobacco	89.66	121.27	35.26
2710	Petro oil/oil bitum minrl, nec	398.12	1218.82	206.14
3003-004	Pharmaceutical product	442.05	522.33	18.16
3901-926	Plastic & articles thereof	616.61	604.92	-1.90
4102	Raw hides & skin of sheep's or lambs	-	-	-
4103	Raw hides and skin other	8.46	.24	-97.16
4104	Leather Bovine/Equin W/Out hair	1211.50	1733.62	43.10
4105	Tanned or crust skins of sheep or lambs	.55	.36	-34.55
4106	Tanned or crust hides and skins or other animals	244.57	280.92	14.86
4107	Leather hole hides and skins or crusting	360.06	464.21	28.93
4113	Leather further prepared after tanning or crusting including parchment-dressed leather of other animals	114.82	265.50	131.23
4202	Trunks, suit-case, vanity-cases, brief cases, and other	789.82	1175.33	48.81
4602	Basket work, wicker work, and other articles	50.06	61.25	22.35
5303	Jute and other textile bast fibres, raw or retted	646.60	707.54	9.42
5307	Jute yarn	3629.64	4584.91	26.32
5310	Woven fabrics and jutes or of other textile bast fibres	430.52	445.72	3.53
5607	Jute twine, cordage, roofs and cables	99.28	105.58	6.35
6101-117	Readymade garments men's women's and girls knitted and crocheted	74703.08	72389.66	-3.10
6201-217	Readymade garments men's women's and girls not knitted and crocheted	89141.77	88990.08	-0.17
6305	Sacks and bags, of a kind used for the packing of goods	1007.68	1071.60	6.34
6401-6406	Foot ware with outer soles and uppers of rubber or of plastics and other	3144.92	3575.36	13.69
6505	Heads and other headgear, knitted or crocheted	335.78	385.58	14.83
	Total	179913.61	181320.4	0.78

Table 18. Monthly merchandise import (2 digit HS code)

(In million taka)

H S Code	Commodities	2014-15		% change from previous month
		Feb'15	Mar'15	
1	Live animals	-	-	-
2	Meat and edible meat offal	-	18.93	-
3	Fishes, crustacean and other aquatic	308.07	439.09	42.53
4	Dairy produces edible product of animal origin.	1859.23	2739.83	47.36
5	Products of animal origin	424.85	478.88	12.72
6	Live tree and other plants etc.	1.64	1.67	1.83
7	Edible vegetables, roots as tubers	5468.37	5068.68	-7.31
8	Edible fruits and nuts citrus fruits	1923.07	2072.93	7.79
9	Coffee, tea, mate and spices	1339.38	1393.60	4.05
10	Cereals	11327.68	13916.78	22.86
11	Product of milling industry: malt etc.	223.14	257.50	15.40
12	Oil seeds and oleaginous fruits	6894.46	2840.66	-58.80
13	Lac, gums, resins , vegetable saps & extra	34.36	41.24	20.02
14	Vegetable plaiting materials	25.62	49.49	93.17
15	Animal or vegetable fats and oils	20413.80	21458.70	5.12
16	Preparations of meat or fish etc.	10.25	5.99	-41.56
17	Sugar and sugar confectionery	6448.46	9199.57	42.66
18	Cocoa and cocoa preparation	26.18	49.99	90.95
19	Preparations of cereals, flour, starch etc.	418.41	549.39	31.30
20	Preparations of vegetable, fruits, nuts, etc.	41.38	52.15	26.03
21	Misc. edible preparations	393.79	627.24	59.28
22	Beverages, spirits and vinegar	70.05	117.52	67.77
23	Residues & waste from the food industries	1990.80	2491.71	25.16
24	Tobacco mfg tobacco substitutes	55.23	137.19	148.40
25	Salt, sulphur, etc. and plastering metals stone cement	6082.87	7600.40	24.95
26	Ores, slag and ash	528.21	423.05	-19.91
27	Mineral, fuels/oils etc.	27511.94	34733.80	26.25
28	Inorganic. Chem.: compounds of specious metals etc.	2570.96	2472.33	-3.84
29	Organic Chemicals	4319.85	3969.82	-8.10
30	Pharmaceutical products	889.06	338.21	-61.96
31	Fertilizers	5172.06	6061.08	17.19
32	Tanning/dyeing ext; dye pigments etc.	3744.70	3795.47	1.36
33	Essential Oils, perfumery/toilet pre.	422.78	557.24	31.80
34	Soap, organic surface-active agents etc.	1087.65	1134.46	4.30

Table 18. Monthly merchandise import (2 digit HS code)

(In million taka)

H S Code	Commodities	2014-15		% change from previous month
		Feb'15	Mar'15	
35	Albuminoidal substitute starches, glues e	457.14	499.58	-
36	Explosives pyrotechnic products etc.	85.16	.40	-99.53
37	Photographic/cinematographic goods	120.58	220.42	82.80
38	Miscellaneous chem. products	3224.84	2907.88	-9.83
39	Plastics and articles thereof	9608.04	12992.67	35.23
40	Rubber and articles thereof	1422.08	3181.15	123.70
41	Raw hides & skins, leather	1271.64	1072.43	-15.67
42	Articles of Leather/Animal gut	186.23	214.60	15.23
43	Fur skins & artificial fur. Mfg.	4.91	13.46	174.13
44	Wood & art. of wood; wood charcoal	824.52	1235.34	49.83
45	Cork and articles of cork	.77	3.27	324.68
46	Manufactures of straw etc.	5.19	5.21	0.39
47	Pulp/ wood/fibrous cellulosic materials etc.	1116.78	1022.12	-8.48
48	Paper & paper board; art. Paper pulps etc.	2973.44	4016.59	35.08
49	Printed Book, News paper & picture	74.44	329.13	342.14
50	Silk	4.35	22.52	417.70
51	Wool, fine/coarse animal hair etc.	357.63	332.08	-7.14
52	Cotton	43732.55	43806.48	0.17
53	Other vegetabe, textile fibres, paper/yarn etc.	295.94	107.46	-63.69
54	Man-made filaments	7049.43	6901.32	-2.10
55	Man-made staple fibres	10237.90	10413.11	1.71
56	Wadding felts non-wovens, special yarn etc.	396.45	245.73	-38.02
57	Carpet other text. floor coverings	23.13	16.86	-27.11
58	Special woven fabrics, tufted textile fabrics etc.	1049.39	732.45	-30.20
59	Impregnated, coated, textile fabrics etc.	874.35	1095.43	25.29
60	Knitted or crocheted fabrics	3592.29	3059.16	-14.84
61	Article of apparel. clothing accessor. knit /crocht.	118.10	73.23	-37.99
62	Articl of apparel.clothing accessor.n-knit/ crocht.	5371.01	4871.25	-9.30
63	Other made up textile articles etc.	134.81	82.61	-38.72
64	Footwear, gaiter & like etc.	1002.68	681.69	-32.01
65	Headgear and parts thereof	10.77	36.44	238.35
66	Umbrellas, sun umbrellas, walk sticks etc.	34.86	35.39	1.52

Table 18. Monthly merchandise import (2 digit HS code)

(In million taka)

H S Code	Commodities	2014-15		% change from previous month
		Feb'15	Mar'15	
67	Prepared feather & down articles	25.77	5.26	-79.59
68	Art of stone, plastic, cement etc.	198.46	279.38	40.77
69	Ceramic products	393.39	339.85	-13.61
70	Glass and glassware	409.35	504.62	23.27
71	Natural/culture pearls & precious stones	20.87	56.53	170.87
72	Iron or steel	12285.66	12397.89	0.91
73	Articles of iron or steel	2448.13	2823.55	15.33
74	Copper and articles thereof	1795.02	1171.68	-34.73
75	Nickel and articles thereof	11.48	8.34	-27.35
76	Aluminum and article thereof	1797.85	1475.75	-17.92
78	Lead and articles thereof	317.81	456.13	43.52
79	Zinc and articles thereof	1042.58	832.83	-20.12
80	Tin and articles thereof	1.85	30.94	1572.43
81	Other base metals, cermet etc.	28.83	18.47	-35.93
82	Tools, implements, cutlery etc.	217.61	255.82	17.56
83	Miscellaneous art of base metal.	458.96	352.97	-23.09
84	Nuclear reactors, boilers etc.	26527.91	31017.62	16.92
85	Electrical mach. & equipment, parts etc.	12857.58	12829.01	-0.22
86	Rail/tramway locomotives etc.	11.06	18.27	65.19
87	Vehicles, other than rail/tram way's & parts etc.	6200.03	7227.38	16.57
88	Aircraft, space craft and parts.	241.02	438.94	82.12
89	Ships, boats & floating structures	7286.92	4174.05	-42.72
90	Optical, Photograph, Cinematograph, Medical Inst.	1566.14	1965.10	25.47
91	Clocks & watches & parts.	34.71	18.31	-47.25
92	Musical /instruments and parts etc.	1.06	1.83	72.64
93	Arms, & ammunition and parts & accessories	19.64	76.53	289.66
94	Furniture, bedding, mattresses etc.	480.25	360.10	-25.02
95	Toys, games & sports requisites & parts etc.	144.57	99.92	-30.88
96	Miscellaneous mfg. articles	1565.88	1464.99	-6.44
97	Works/ art, collectors & antiques	1.34	.25	-81.34
98	Goods commodities nec	3.14	.86	-72.61
Total		286084.60	306025.2	6.97

Table 19. Monthly import of major commodities (4 digits)

(In million taka)

H S Code	Commodities	2014-15		% change from previous month
		Feb'15	Mar'15	
401	Milk & cream	1.41	1.96	39.01
703	Onion & Garlic	1555.10	1320.84	-15.06
713	Dried leguminous vegetable	3897.28	3744.26	-3.93
804	Dates	52.26	134.39	157.16
806	Grapes	360.63	539.91	49.71
808	Apples	442.48	369.37	-16.52
904	Pepper	479.93	478.97	-0.20
1001	wheat	5038.82	7855.65	55.90
1006	Rice	5072.90	5081.30	0.17
1108	Starches	218.73	199.51	-8.79
1201-1212	Oil seeds	6894.44	2840.65	-58.80
1507	Soya bean oil	8310.70	4271.13	-48.61
1511	Palm Oil	11874.29	16990.46	43.09
1701	Sugar	6366.28	9078.58	42.60
2401	Un-manufactured tobacco	15.70	110.03	600.83
2523	Cement	4922.29	6258.64	27.15
2710	Petroleum product	20863.98	29804.60	42.85
2801-2851	In organic Chemicals	2570.84	2472.16	-3.84
2901-2942	Organic Chemicals	4319.75	3969.81	-8.10
3101-3105	Fertilizers	5172.06	6061.07	17.19
3201-3215	Tanning & dyeing	3744.69	3795.45	1.36
3801-3825	Chemical product	3224.82	2907.87	-9.83
3901-3926	Plastic & articles thereof	9608.01	12992.62	35.23
4801-4823	Paper & paper board	3016.35	4016.58	33.16
5201-5203	Raw cotton	13287.66	15024.08	13.07
5205-5207	Cotton yarn	7225.06	7211.07	-0.19
5208-5212	Cotton fabric	23150.66	21491.27	-7.17
5402-5406	Synthetic yarn	2642.19	2718.37	2.88
5407-5408	Synthetic fabric	3498.73	3207.31	-8.33
5504-5507	Staple fibre	1443.71	947.20	-34.39
5509-5511	Yarn of staple fibre	3023.48	2837.72	-6.14
5512-5516	Fabric of staple fibre	4926.96	4413.78	-10.42
7201-7229	Iron & steel	12285.65	12397.90	0.91
7301-7326	Article of iron & steel	2448.09	2823.51	15.34
7601-7616	Aluminum & article thereof	1797.80	1475.63	-17.92
8402-8485	Machinery & parts	26392.35	30861.10	16.93
8501-8548	Electrical goods	12854.22	12829.08	-0.20
8607-8609	Rail, tramway, locomotive	10.80	18.27	69.17
8701-8716	Vehicle	6200.01	7227.33	16.57
8902,8903,8908	Ships, boat, floating structure	7170.54	4126.06	-42.46
9001-9033	Optical, Photo, Cinema etc.	1566.50	1965.15	25.45
	Total	237948.20	256870.6	7.95

Table 20. Re-exports Value, March-2015 by 2 digit HS Code.

HS CODE	HS DESCRIPTIONS	Million (In Taka)
	Total Re- export	1058.03
03	Fish & crustacean otr aqutic	13.88
19	Prep of Cerel/ FLR/Strach/Milk	3.38
27	Mineral fuels, oils and waxes	46.51
29	Organic chemicals	1.00
40	Rubber & articles thereof	0.04
41	Raw hides & skins of bovine	2.63
49	Printed book,newspaper,picture	.01
52	Cotton	1.62
55	Man-made staple fibers	6.22
59	Impregnated ,coated,coverd/text	0.04
62	Artcl aparl clth acesor n – knit	1.75
67	Prepared feathr & down artcles	2.68
71	Natural/Cltura prl,prcius stone	20.05
73	Articles of iron & steel	28.10
74	Copper & articles thereof	3.46
82	Tool cut spon base metl & part	8.90
83	Miscellaneous art of base metl	7.05
84	Nuclear rect boil mach & parts	499.63
85	Electrcl machinery ewuipmnt part	238.01
87	Vechicle otr rail/tram rol-stoc	38.97
90	Optical , photo, cinma surgi apt	12.06
93	Arms & ammumtion, parts& ace	122.01
96	Miscellaneous MFG articles	0.03

Table 21. Re-imports Value, March-2015 by 2 digit HS Code

HS CODE	HS DESCRIPTIONS	Million (In Taka)
	Total Re- import	58.28
12	Oil seeda & oleaginous fruits	14.21
85	Electrcl machinery eqipmnt part	44.07

Table 22. Temporary export Value, March -2015 by 2 digit HS Code

HS CODE	HS DESCRIPTIONS	Million (In Taka)
	Total : Temporary- Exports	1283.72
73	Articles of iron and steel	276.13
76	Aluminium and article thereof	.00
84	Nuclear react boil mach & parts	370.90
85	Electricrol machinery equipment part	17.29
87	Vehicle otr rail/tram rol-stoc	350.05
88	Aircraft,spacecraft part	.03
89	Ships boat & floating structure	267.27
90	Optical, photo, cinema surgi apt	.03
93	Arms & ammumtion, parts & ace	1.59
96	Miscellaneous mfg articl	0.43

Table 23. Temporary Import Value, March -2015 by 2 digit HS Code

HS CODE	HS DESCRIPTIONS	Million (In Taka)
	Total : Temporary- Imports	2.16
87	Vehicle otr rail/tram rol-stoc	2.16